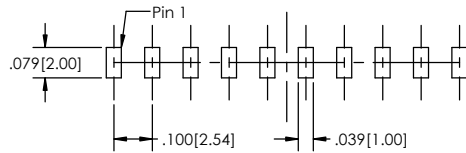
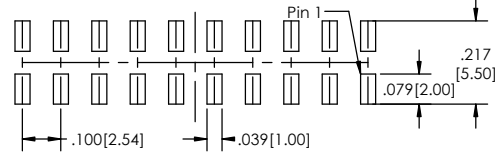


**Recommended P.C. Board Layout**  
SCALE 4:1

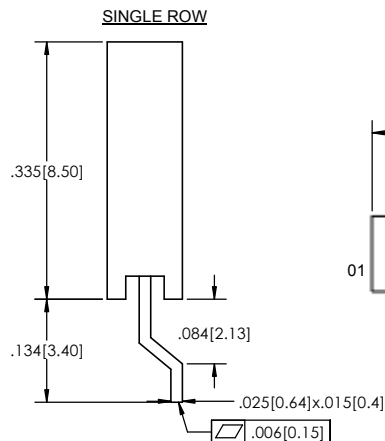
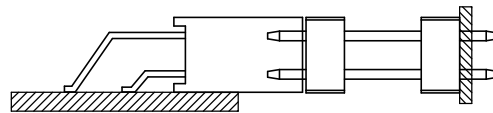


**SINGLE ROW**

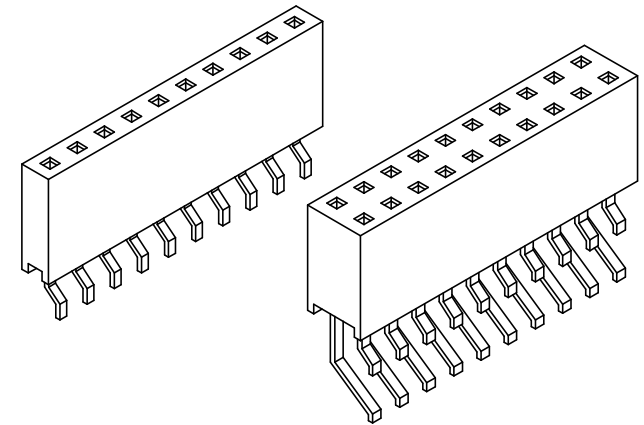
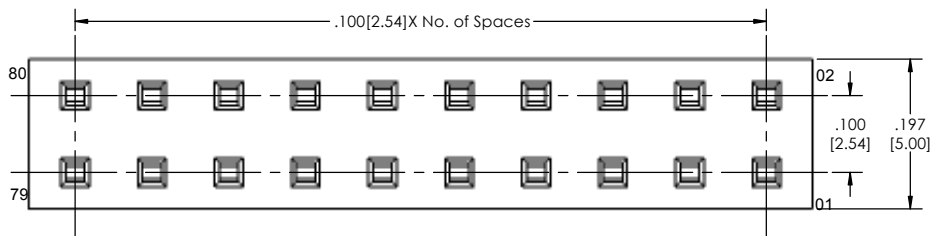
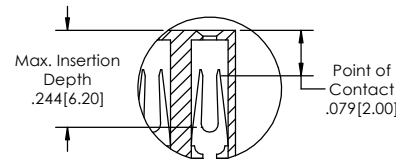
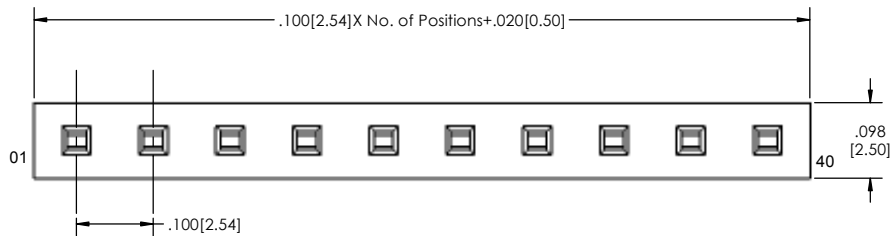
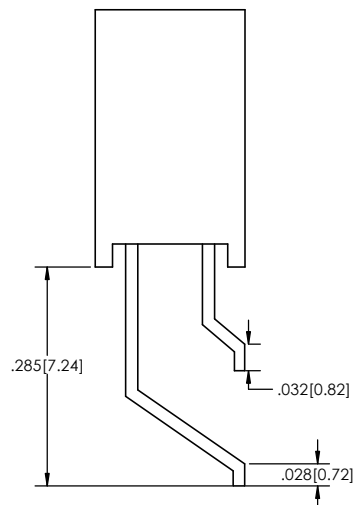


**DOUBLE ROW**

**APPLICATION**



**DOUBLE ROW**



SSHSM-1 **XX** - **X** - **02** - **XX** - **H** - **XXX** - **XX** - **X** - **LF**  
(A) (B) (C) (D) (E) (F) (G) (H) (I)

- A.** Pins Per Row  
- 1 through 40
- B.** Row Specification  
- S= Single  
- D= Double
- C.** Surface Mount
- D.** Plating Options  
- See Plating Options below
- E.** Horizontal
- F.** Polarized Position  
- Leave blank if not needed  
- If required, specify empty pin position  
- e.g. 012 for Pin 12
- G.** Packing Information  
- TR= Tape and Reel  
- TB= Tube
- H.** Pad  
- K= Kapton  
- O= No Pad
- I.** Lead Free
- Mates With:**
- |         |         |
|---------|---------|
| BSTC    | TSHCR   |
| BSTCM   | TSHCRE  |
| BSTCR   | TSHCRSM |
| BSTCRSM | TSHR    |
| BSTS    | TSHRE   |
| LBSTCM  | TSHS    |
| LTSHCR  | TSHSCM  |
| LTSHCRE | TSHSM   |
| LTSHR   | ULTSHSM |
| LTSHRE  | ULTSHC  |
| LTSHRM  | ULTSHCR |

Plating options	
G	-10µ Gold on Contact Area/ Flash on Tail
T	-Matte Tin all Over
GT	-10µ Gold on Contact Area/ Matte Tin on Tail
H	-30µ Gold on Contact Area/ Matte Tin on Tail
F	-Gold Flash over Entire Pin
FT	-Gold Flash on Contact Area/ Matte Tin on Tail

**Specifications:**  
Insertion Depth: .145[3.68] to .250[6.35]  
Insertions Force- Per Contact- H Plating:  
6oz. [1.67N] avg. with .025[0.64mm] sq. pin  
Withdrawal Force- Per Contact- H Plating:  
5oz. [1.39N] avg with .025[0.64mm] sq. pin  
Current Rating: 3.0 Ampere  
Insulation Resistance: 1000M Ohms Min.  
Dielectric Withstanding: 1000V AC/Min.  
Contact Resistance: 20M Ohms Max.  
Operation Temperature: -25°C to +105°C  
Max. Process Temperature  
Peak: 260°C up to 20 secs.  
Process: 230°C up to 60 secs.  
Wave: 260°C up to 6 secs.  
Reflow: 260°C up to 10 secs.  
Manual Solder: 350°C up to 5 secs.

**Materials:**  
Contact Material: Phosphor Bronze  
Insulator Material: Nylon 6T  
Plating: 50µ" (1.27) Ni

Tails may be clipped to achieve specific dimensions.  
Products cut to specific sizes are uncancellable/ nonreturnable.  
Parts are subject to change without notice.



**PROPRIETARY AND CONFIDENTIAL**  
THE INFORMATION CONTAINED IN THIS DRAWING IS THE SOLE PROPERTY OF Major League Electronics. ANY REPRODUCTION IN PART OR AS A WHOLE WITHOUT THE WRITTEN PERMISSION OF Major League Electronics IS PROHIBITED.

UNLESS OTHERWISE SPECIFIED:		NAME	DATE
DIMENSIONS ARE IN INCHES		DRAWN	01/20/15
TOLERANCES:		CHECKED	GWE
ONE DECIMALS ±.100		ENG APPR.	
TWO DECIMAL ±.010		MFG APPR.	
THREE DECIMAL ±.005		ADDRESS:	
FOUR DECIMAL ±.002		2533 Centennial Blvd.	
NEXT ASSY		Jeffersonville, In 47130	
USED ON		Phone: 812-670-4174	
APPLICATION		Fax: 812-670-4175	
DO NOT SCALE DRAWING		E-Mail: mle@mlelectronics.com	
INTERPRET GEOMETRIC TOLERANCING PER:		TITLE: SSHSM-1-H SERIES	
MATERIAL		SIZE DWG. NO.	
FINISH		C	
		SCALE 8:1	
		SHEET 1 OF 1	

