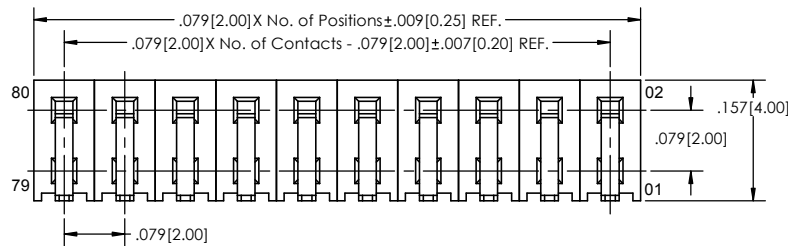
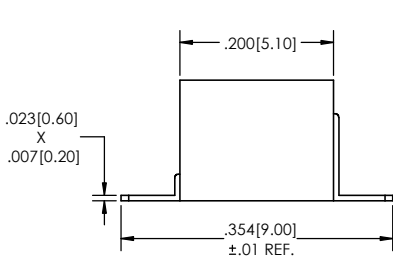
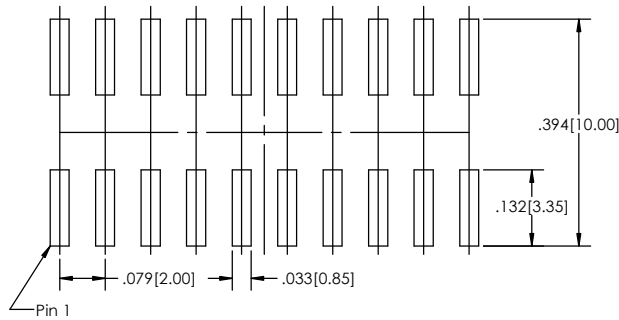


Recommended P.C. Board Layout
SCALE 6:1



SMBC-2 [XX] - [D] - [02] - [XX] - [H] - [XXX] - [XX] - [LF]
(A) (B) (C) (D) (E) (F) (G) (H)

- A. Pins Per Row
- 3 through 25
- B. Row Specification
- D= Double Row
- C. Mounting Style
- 02= Surface Mount
- D. Plating Options
- See Plating Options below
- E. H= Horizontal
- F. Polarized Position
- Leave blank if not needed
- If required, specify empty pin position
- e.g. 012 for Pin 12
- G. Packing Information
- TR= Tape and Reel
- TB= Tube
- If left blank, packaging at MLE's discretion
Pad may be metal, mylar or plastic
- H. Lead Free

Mates with:
BSTC
BSTCM
BSTCR
BSTCRSM
BSTS
TBSTC
TBSTCM
TBSTCR
TBSTCRSM
TSHC
TSHCR
TSHCRE
TSHCRSM
TSHR
TSHRE
TSHS
TSHSCM
TSHSC
TSHSCRM
TSHSR
TSHSRE
TSHS

Plating options	
G	-10µ Gold on Contact Area/ Flash on Tail
T	-Matte Tin all Over
GT	-10µ Gold on Contact Area/ Matte Tin on Tail
H	-30µ Gold on Contact Area/ Matte Tin on Tail
F	-Gold Flash over Entire Pin
FT	- Gold Flash on Contact Area/ Matte Tin on Tail

Specifications:
Insertion Force- Single Contact only- H Plating:
3.7oz. [1.03N] avg with .0197 [0.50mm] sq. pin
Withdrawal Force- Single Contact only- H Plating:
2.2oz. [0.61N] avg with .0197 [0.50mm] sq. pin
Current Rating: 2.0 Ampere
Insulation Resistance: 1000M Ohms Min.
Dielectric Withstanding: 500V AC
Contact Resistance: 20M Ohms Max.
Operation Temperature: -40°C to +105°C
Max. Process Temperature
Peak: 260°C up to 10 secs.
Process: 230°C up to 60 secs.
Wave: 260°C up to 6 secs.
Reflow: 260°C up to 10 secs.
Manual Solder: 350°C up to 5 secs.

Materials:
Contact Material: Phosphor Bronze
Insulator Material: Nylon 6T
Plating: Au or Sn over 50µ" (1.27) Ni

Tails may be clipped to achieve specific dimensions.
Products cut to specific sizes are uncancellable/ nonreturnable.
Parts are subject to change without notice.



PROPRIETARY AND CONFIDENTIAL
THE INFORMATION CONTAINED IN THIS
DRAWING IS THE SOLE PROPERTY OF
Major League Electronics. ANY
REPRODUCTION IN PART OR AS A WHOLE
WITHOUT THE WRITTEN PERMISSION OF
Major League Electronics IS
PROHIBITED.

UNLESS OTHERWISE SPECIFIED:		NAME	DATE
DIMENSIONS ARE IN INCHES TOLERANCES: ONE DECIMALS ±.100 TWO DECIMAL ±.005 THREE DECIMAL ±.002 FOUR DECIMAL ±.002		DRAWN	EOW 03/25/14
NEXT ASSY		CHECKED	GWE 03/25/14
USED ON		ENG APPR.	
APPLICATION		MFG APPR.	
DO NOT SCALE DRAWING		ADDRESS: 2533 Centennial Blvd. Jeffersonville, IN 47130 Phone: 812-670-4174 Fax: 812-670-4175 E-Mail: mle@mllelectronics.com	
		TITLE: SMBC-2-DH SERIES	
		SIZE C	DWG. NO. REV A
		SCALE: 8:1	SHEET 1 OF 1

