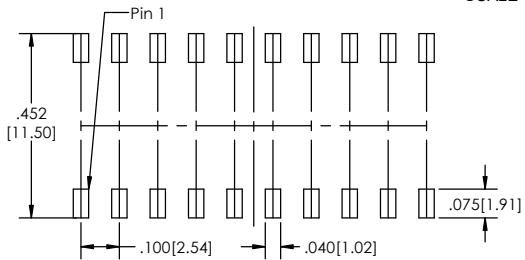
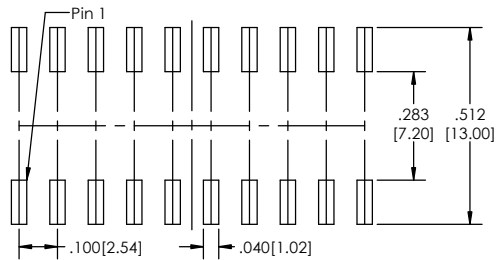


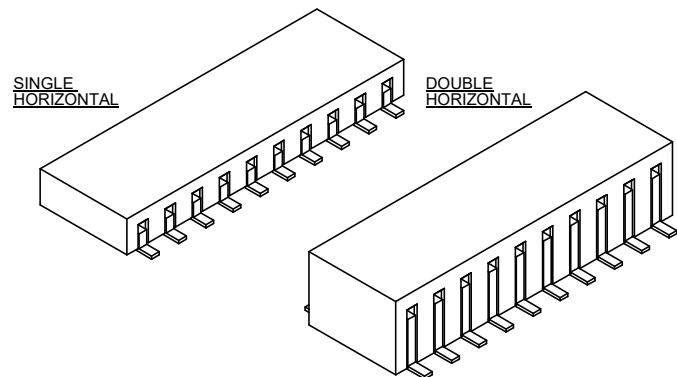
Recommended P.C. Board Layout
SCALE 4:1



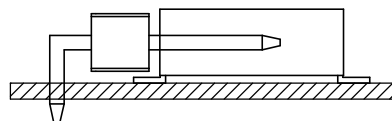
SINGLE ROW



DOUBLE ROW



APPLICATION

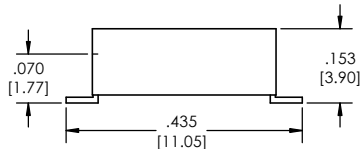


SMBC-1 **XX** - **X** - **02** - **XX** - **H** - **XXX** - **XX** - **LF**
(A) (B) (C) (D) (E) (F) (G) (H)

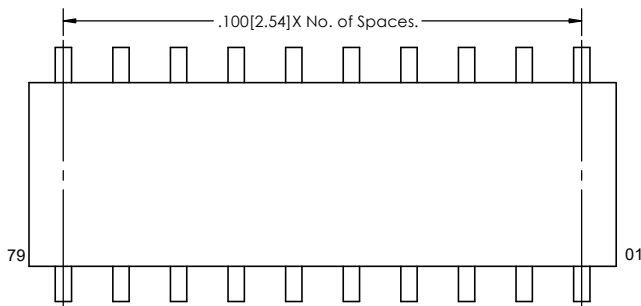
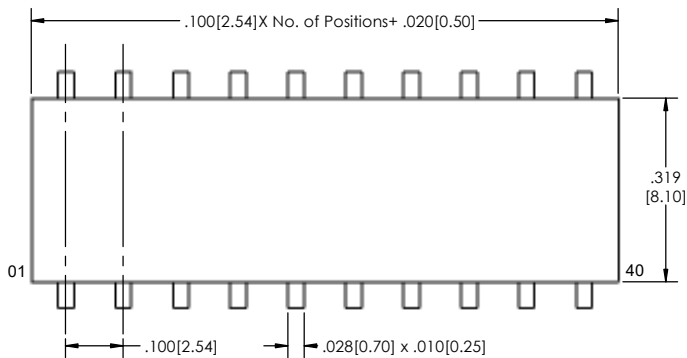
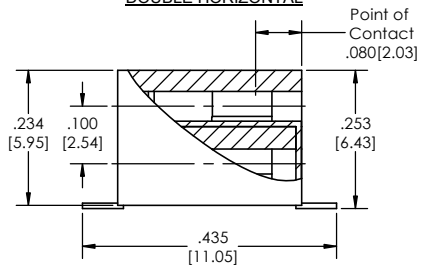
- A. Pins Per Row
 - 01 Through 40
- B. Row Specification
 - S= Single Row
 - D= Double Row
- C. Surface Mount
- D. Plating Options
 - See Plating Options below
- E. Direction
 - H= Horizontal
- F. Polarized Position
 - Leave blank if not needed
 - If required, specify empty pin position e.g. 012 for Pin 12
- G. Packing Information
 - TR= Tape and Reel
 - TB= Tube
 - If left blank, packaging at MLE's discretion
 - Pad may be metal, mylar or plastic
- H. Lead Free

- Mates With:
- BSTC TSHCR
 - BSTCM TSHCRE
 - BSTCR TSHCRSM
 - BSTCRSM TSHR
 - BSTS TSHRE
 - LBSTCM TSHS
 - LTSHCR TSHSCM
 - LTSHCRE TSHSM
 - LTSHR ULTSHSM
 - LTSHRE ULTSHC
 - LTSHSM ULTSHSCR
 - TSHC

SINGLE HORIZONTAL



DOUBLE HORIZONTAL



Plating options	
G	-10µ Gold on Contact Area/ Flash on Tail
T	-Matte Tin all Over
GT	-10µ Gold on Contact Area/ Matte Tin on Tail
H	-30µ Gold on Contact Area/ Matte Tin on Tail
F	-Gold Flash over Entire Pin
FT	- Gold Flash on Contact Area/ Matte Tin on Tail

Specifications:
 Insertion Depth: .145 [3.68] to .250 [6.35]
 Insertion Force- Per Contact- H Plating:
 5oz. [1.39N] avg with .025 [0.64mm] sq. pin
 Withdrawal Force- Per Contact- H Plating:
 3oz. [0.83N] avg with .025 [0.64mm] sq. pin
 Current Rating: 3.0 Ampere
 Insulation Resistance: 5000M Ohms Min.
 Dielectric Withstanding: 500V AC
 Contact Resistance: 20M Ohms Max.
 Operation Temperature: -40°C to +105°C
 Max. Process Temperature
 Peak: 260°C up to 20 secs.
 Process: 230°C up to 60 secs.
 Wave: 260°C up to 6 secs.
 Reflow: 260°C up to 10 secs.
 Manual Solder: 350°C up to 5 secs.

Materials:
 Contact Material: Phosphor Bronze
 Insulator Material: Nylon 6T
 Plating: Au or Sn over 50µ" (1.27) Ni
 Tails may be clipped to achieve specific dimensions.

Products cut to specific sizes are uncancellable/ nonreturnable.
 Parts are subject to change without notice.



PROPRIETARY AND CONFIDENTIAL
 THE INFORMATION CONTAINED IN THIS DRAWING IS THE SOLE PROPERTY OF Major League Electronics. ANY REPRODUCTION IN PART OR AS A WHOLE WITHOUT THE WRITTEN PERMISSION OF Major League Electronics IS PROHIBITED.

UNLESS OTHERWISE SPECIFIED:		NAME		DATE	
DIMENSIONS ARE IN INCHES		DRAWN		EOW	
TOLERANCES:		CHECKED		GWE	
ONE DECIMALS ±.100		ENG APPR.			
TWO DECIMAL ±.010		MFG APPR.			
THREE DECIMAL ±.005		ADDRESS:		2533 Centennial Blvd.	
FOUR DECIMAL ±.002		MATERIAL:		Jeffersonville, In 47130	
NEXT ASSY		FINISH:		Phone: 812-670-4174	
USED ON		DO NOT SCALE DRAWING		Fax: 812-670-4175	
APPLICATION		E-Mail: mle@mlelectronics.com		TITLE: SMBC-1-H SERIES	
				SIZE DWG. NO.	
				C	
				REV F	
				SCALE 6:1	
				SHEET 1 OF 1	

