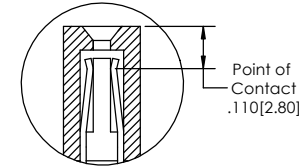
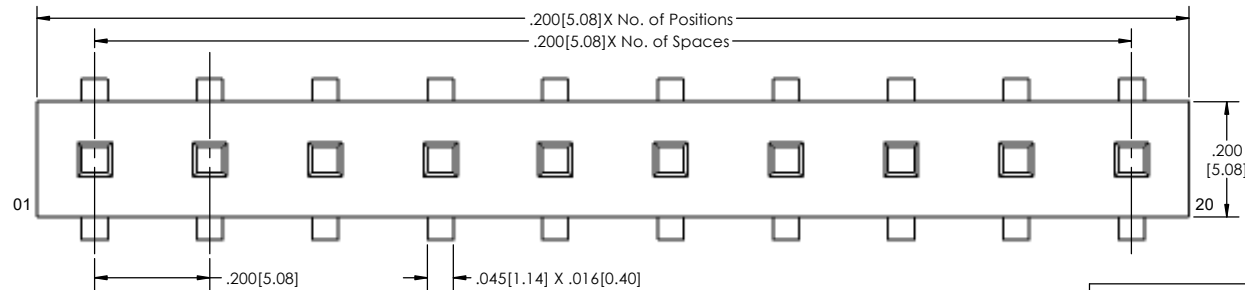
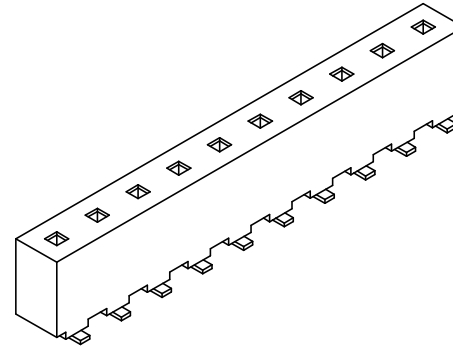
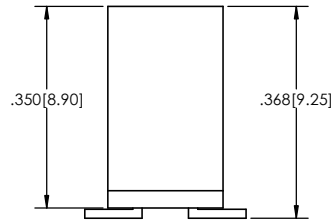
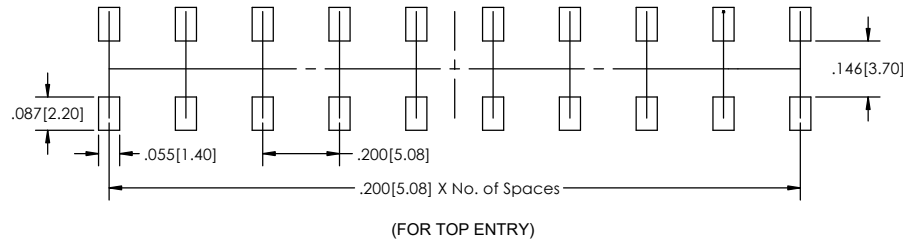
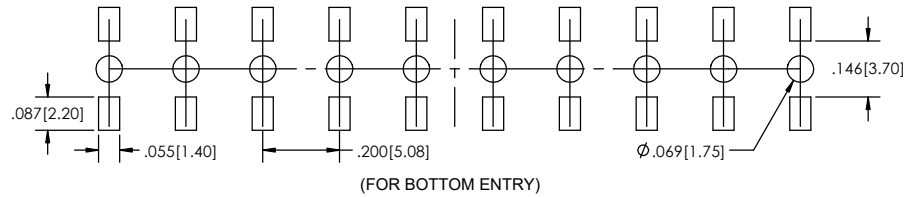
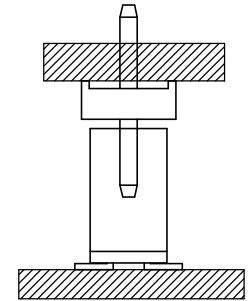


Recommended P.C. Board Layout
SCALE 4:1



APPLICATION



PC200S - **XX** - **S** - **04** - **T** - **XX** - **X** - **LF**
(A) (B) (C) (D) (E) (F) (G)

- A. Pins Per Row
- 2 through 20
- B. Row Specification
- S= Single Row
- C. Surface Mount
- 04
- D. Plating Options
- See Plating Options below
- E. Packing Information
- TR= Tape and Reel
- TB= Tube
- F. Pad
- P= Plastic
- K= Kapton
- O= No Pad
- If left blank, packaging at MLE's discretion
Pad may be metal, mylar or plastic
- G. Lead Free

Mates with:
PC200H
PC200HR

Plating options
T Matte Tin all Over

Specifications:
Current Rating: 7.9 Ampere
Insulation Resistance: 1000M Ohms Min.
Dielectric Withstanding: 1500V AC
Contact Resistance: 20M Ohms Max.
Operation Temperature: -55°C to +105°C
Max. Process Temperature
IR Reflow: 280°C up to 10 secs.
Wave: 250°C up to 10 secs.
Manual Solder: 380°C up to 10 secs.
No. of Mating Cycles: 100
Insertion Force (Average): 7N/Pin Max.
Withdrawal Force (Average): 0.5N/Pin Min.

Materials:
Contact Material: Phosphor Bronze
Insulator Material: LCP, UL94V-0
Plating: 100µ" Matte Tin over 50µ" (1.27) Ni
Tails may be clipped to achieve specific dimensions.

Products cut to specific sizes are uncancellable/ nonreturnable.
Parts are subject to change without notice.



PROPRIETARY AND CONFIDENTIAL
THE INFORMATION CONTAINED IN THIS
DRAWING IS THE SOLE PROPERTY OF
Major League Electronics. ANY
REPRODUCTION IN PART OR AS A WHOLE
WITHOUT THE WRITTEN PERMISSION OF
Major League Electronics IS
PROHIBITED.

UNLESS OTHERWISE SPECIFIED:		NAME		DATE	
DRAWN		EOW	10/11/16		
CHECKED		GWE	10/11/16		
ENG APPR.					
MFG APPR.					ADDRESS
INTERPRET GEOMETRIC TOLERANCING PER:					2533 Centennial Blvd. Jeffersonville, IN 47130 Phone: 812-670-4174 Fax: 812-670-4175 E-Mail: mle@mlelectronics.com
MATERIAL					TITLE: PC200S-04 SERIES
FINISH					SIZE DWG. NO.
APPLICATION		DO NOT SCALE DRAWING			REV D
SCALE 6:1					SHEET 1 OF 1