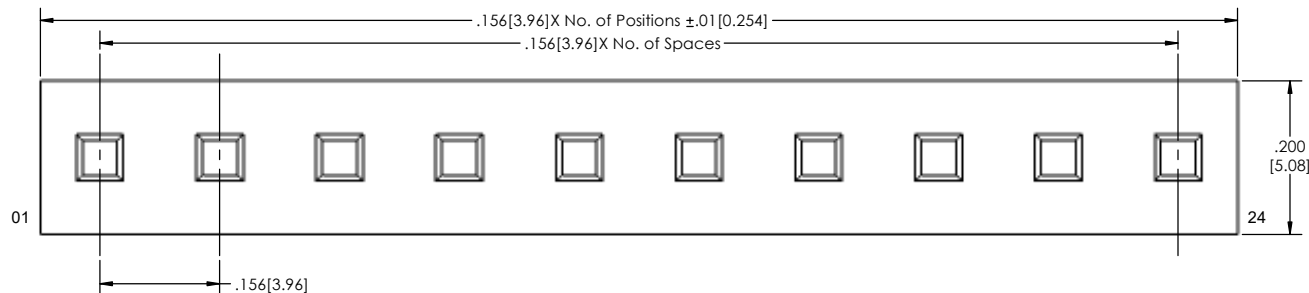
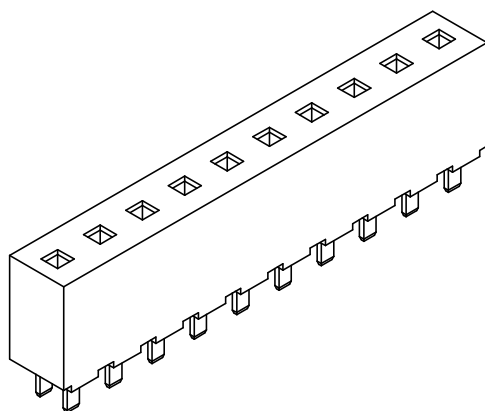
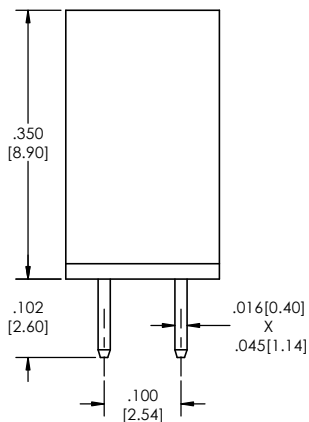
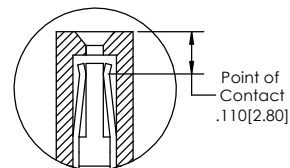
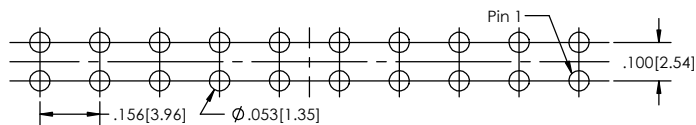
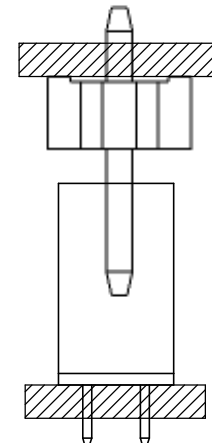


RECOMMENDED PC BOARD LAYOUT

SCALE 4:1



APPLICATION



PC156S - **XX** - **S** - **02** - **T** - **X** - **LF**
(A) (B) (C) (D) (E) (F)

- A. Pins Per Row
 - 1 through 24
- B. Row Specification
 - S= Single Row
- C. Thru Hole
 - 02
- D. Plating Options
 - See Plating Options below
- E. Packaging Information
 - T= Tube
 - B= Bulk
 - If left blank, packaging at MLE's discretion
- F. Lead Free

Mates with:
PC156H
PC156HR

Plating options
T-Matte Tin all Over

Specifications:
Current Rating: 7.9 Ampere
Insulation Resistance: 5000M Ohms Min.
Dielectric Withstanding: 1500V AC/DC
Contact Resistance: 30M Ohms Max.
Operation Temperature: -55°C to +105°C
Max. Process Temperature
IR Reflow: 280°C up to 10 secs.
Wave: 250°C up to 10 secs.
Manual Solder: 380°C up to 5 secs.

Materials:
Contact Material: Phosphor Bronze
Insulator Material: LCP, UL94V-0
Plating: 100u" Matte Tin over 50u" [1.27] Ni

Tails may be clipped to achieve specific dimensions.
Products cut to specific sizes are uncancellable/ nonreturnable.
Parts are subject to change without notice.



PROPRIETARY AND CONFIDENTIAL
THE INFORMATION CONTAINED IN THIS DRAWING IS THE SOLE PROPERTY OF Major League Electronics. ANY REPRODUCTION IN PART OR AS A WHOLE WITHOUT THE WRITTEN PERMISSION OF Major League Electronics IS PROHIBITED.

UNLESS OTHERWISE SPECIFIED:		NAME	DATE
DIMENSIONS ARE IN INCHES		DRAWN	EOW 10/11/16
TOLERANCES:		CHECKED	GWE 10/11/16
ONE DECIMALS ±.100		ENG APPR.	
TWO DECIMAL ±.010		MFG APPR.	
THREE DECIMAL ±.005		ADDRESS:	
FOUR DECIMAL ±.002		2533 Centennial Blvd.	
NEXT ASSY USED ON		Jeffersonville, IN 47130	
APPLICATION		Phone: 812-670-4174	
DO NOT SCALE DRAWING		Fax: 812-670-4175	
		E-Mail: mle@mlelectronics.com	
		TITLE: PC156S-02 SERIES	
		SIZE	REV
		C	C
		SCALE 8:1	
		SHEET 1 OF 1	

