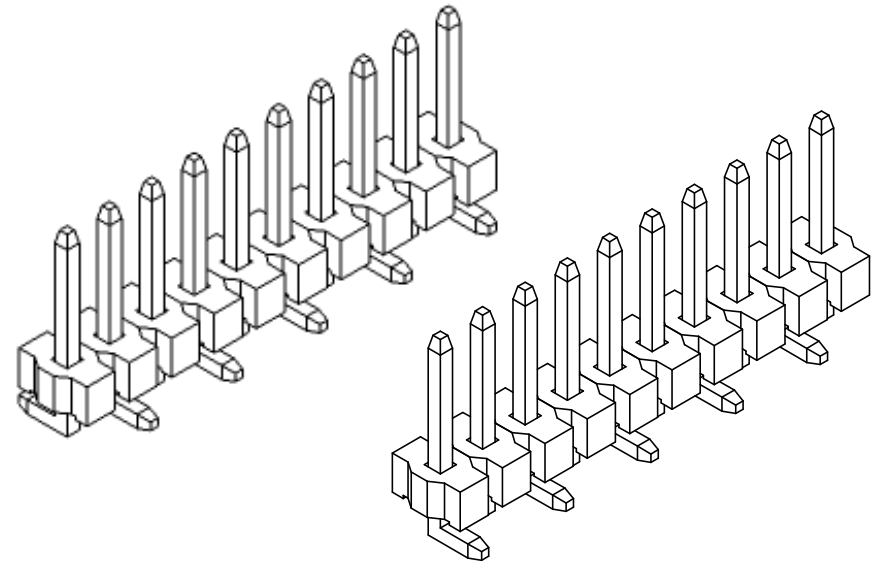
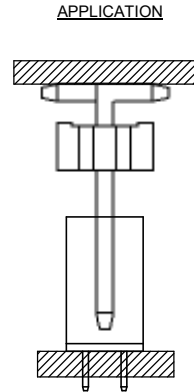
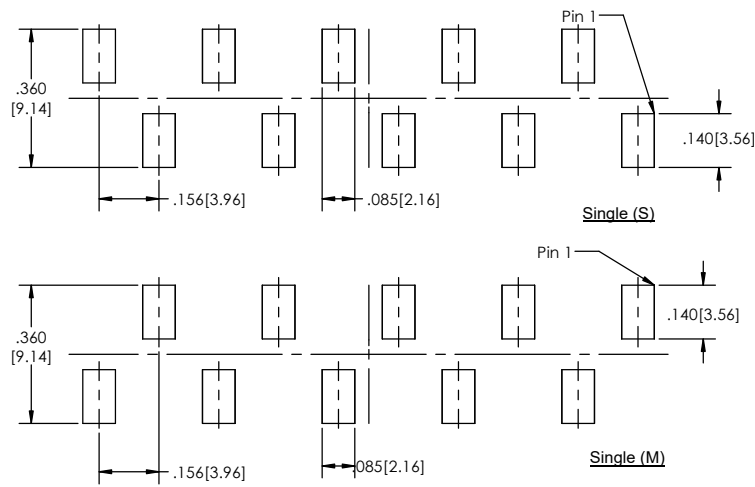


**Recommended P.C. Board Layout**  
SCALE 4:1



PC156HSM - **XX** - **S** - **XX** - **T** - **X** - **XX** - **X** - **LF**  
(A) (B) (C) (D) (E) (F) (G) (H)

- A. Pins Per Row  
- 1 through 24  
B. Row Specification  
- S= Single Row  
C. Pin Options  
- See Pin Options below  
D. Plating Options  
- See Plating Options below  
E. Footprint Orientation  
- S= pin 1 left  
- M= pin 1 right  
F. Packaging Information  
- TR= Tape and Reel  
- TB= Tube  
G. Pad  
- P= Plastic  
- O= No Pad  
- If left blank, packaging at MLE's discretion  
Pad may be metal, mylar or plastic  
H. Lead Free

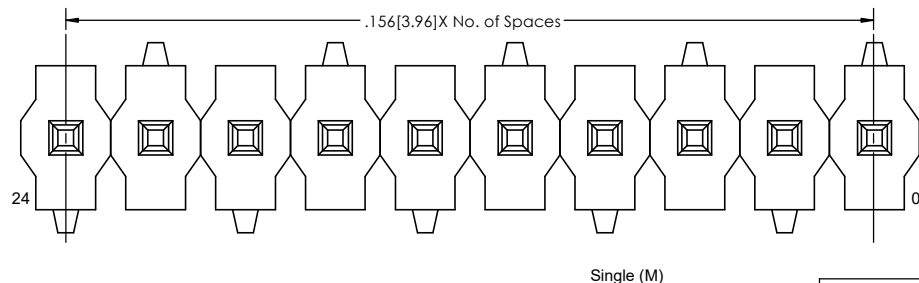
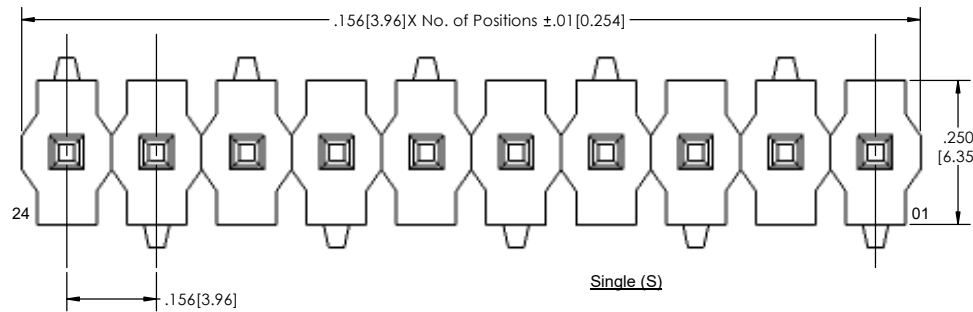
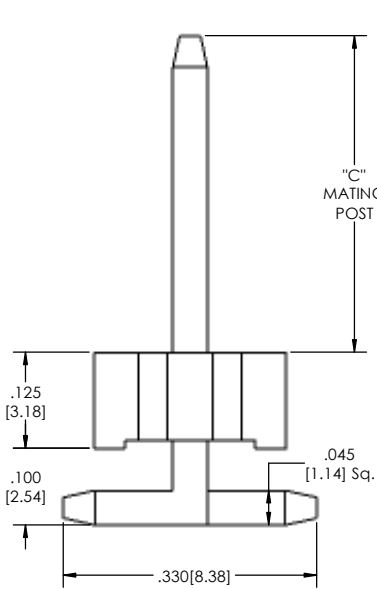
Mates with:  
PC156S-XX-S-02  
PC156S-XX-S-04

Plating options
T-Matte Tin all Over

Pin Options
"C" Mating Post
.412[10.46mm] 04
.462[11.73mm] 06
.752[19.10mm] 14

Specifications:  
Current Rating: 7.9 Ampere  
Insulation Resistance: 5000M Ohms Min.  
Dielectric Withstanding: 1500V AC/DC  
Contact Resistance: 20M Ohms Max.  
Operation Temperature: -40°C to +105°C  
Max. Process Temperature  
Peak: 260°C up to 20 secs.  
Process: 230°C up to 60 secs.  
Wave: 260°C up to 6 secs.  
Manual Solder: 350°C up to 5 secs

Materials:  
Contact Material: Brass  
Insulator Material: High Temperature Thermoplastic, Ul94V-0, LCP  
Tails may be clipped to achieve specific dimensions.  
Products cut to specific sizes are uncancellable/ nonreturnable.  
Parts are subject to change without notice.



PROPRIETARY AND CONFIDENTIAL  
THE INFORMATION CONTAINED IN THIS DRAWING IS THE SOLE PROPERTY OF Major League Electronics. ANY REPRODUCTION IN PART OR AS A WHOLE WITHOUT THE WRITTEN PERMISSION OF Major League Electronics IS PROHIBITED.

UNLESS OTHERWISE SPECIFIED:		NAME	DATE
DIMENSIONS ARE IN INCHES		DRAWN	EOW 10/11/16
TOLERANCES:		CHECKED	GWE 10/11/16
ONE DECIMALS ±.100		ENG APPR.	
TWO DECIMAL ±.010		MFG APPR.	
THREE DECIMAL ±.005		ADDRESS:	
FOUR DECIMAL ±.002		2533 Centennial Blvd.	
NEXT ASSY USED ON		Jeffersonville, In 47130	
APPLICATION		Phone: 812-670-4174	
DO NOT SCALE DRAWING		Fax: 812-670-4175	
		E-Mail: mle@mllectronics.com	

TITLE: PC156HSM SERIES		REV	
SIZE		C	
DWG. NO.		C	
SCALE 8:1		SHEET 1 OF 1	

