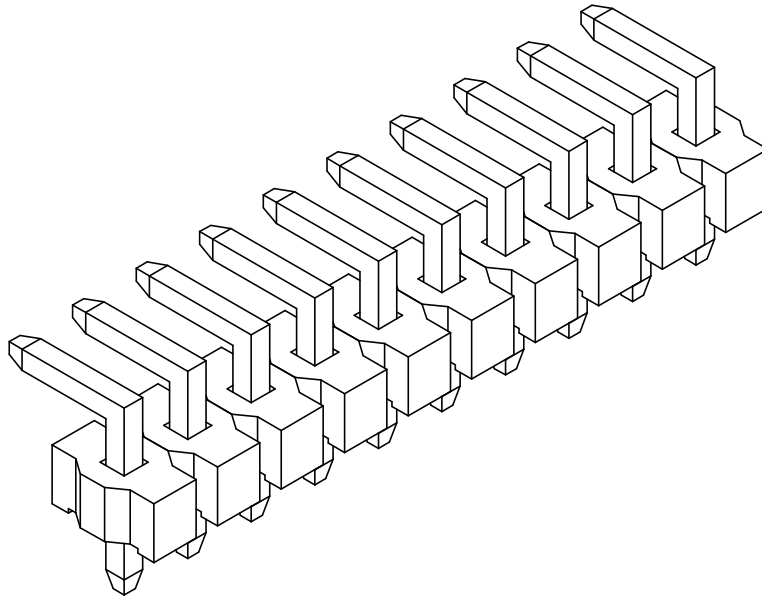
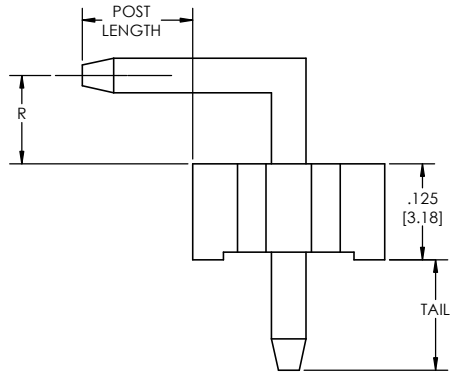
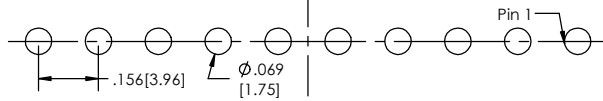
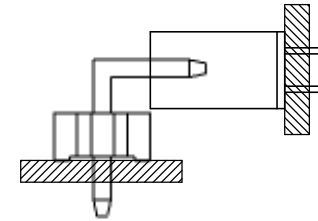


RECOMMENDED PC BOARD LAYOUT

SCALE 4:1



APPLICATION



PC156HR - **XX** - **S** - **XX** - **T** - **LF**
(A) (B) (C) (D) (E)

- A. Pins Per Row
- 1 through 24
- B. Row Specification
- S= Single Row
- C. Pin Options
- See Pin Options below
- D. Plating Options
- See Plating Options below
- E. Lead Free

Mates with:
PC156S-XX-S-02
PC145S-XX-S-04

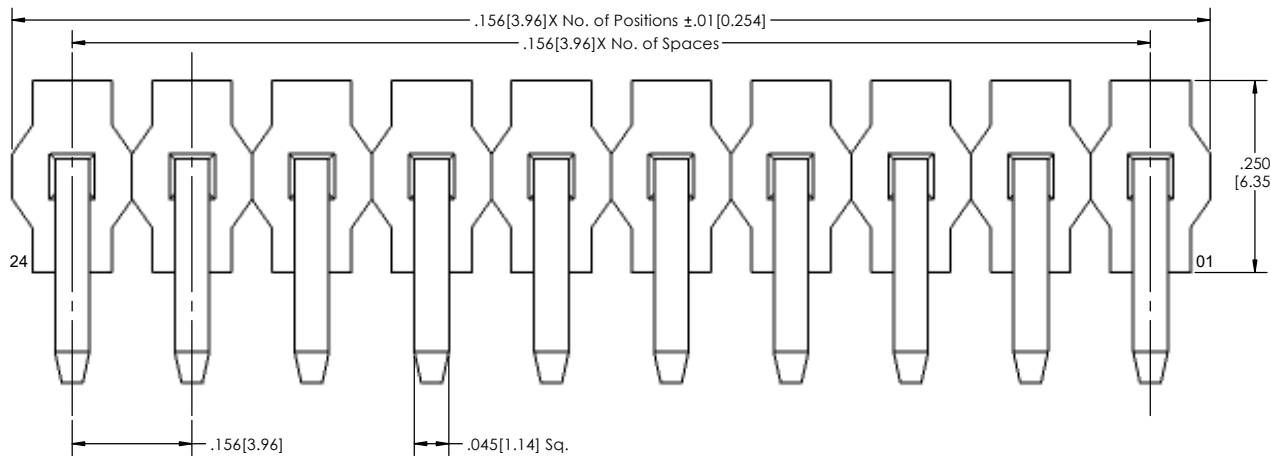
Pin Options			
Post Length	Tail Length	R Dimension	
.144[3.66mm]	.144[3.66mm]	.113[2.87mm]	02
.320[8.13mm]	.175[4.45mm]	.100[2.54mm]	06
.423[10.75mm]	.177[4.50mm]	.246[6.30mm]	10
.534[13.56mm]	.156[3.96mm]	.195[4.95mm]	14

Plating options
T-Matte Tin all Over

Specifications:
 Current Rating: 7.9 Ampere
 Insulation Resistance: 5000M Ohms Min.
 Dielectric Withstanding: 1500V AC/DC
 Contact Resistance: 20M Ohms Max.
 Operation Temperature: -55°C to +105°C
 Max. Process Temperature
 IR Reflow: 260°C up to 10 secs.
 Wave: 250°C up to 10 secs.
 Manual Solder: 380°C up to 5 secs.

Materials:
 Contact Material: Brass
 Insulator Material: LCP, UL94V-0
 Plating: 120" Matte Tin over 50" [1.27] Ni

Tails may be clipped to achieve specific dimensions.
 Products cut to specific sizes are uncancellable/ nonreturnable.
 Parts are subject to change without notice.



PROPRIETARY AND CONFIDENTIAL
 THE INFORMATION CONTAINED IN THIS
 DRAWING IS THE SOLE PROPERTY OF
 Major League Electronics. ANY
 REPRODUCTION IN PART OR AS A WHOLE
 WITHOUT THE WRITTEN PERMISSION OF
 Major League Electronics IS
 PROHIBITED.

UNLESS OTHERWISE SPECIFIED:		NAME		DATE	
DIMENSIONS ARE IN INCHES		DRAWN	EOW	10/11/16	
TOLERANCES:		CHECKED	GWE	10/11/16	
ONE DECIMALS ±.100		ENG APPR.			
TWO DECIMAL ±.010		MFG APPR.			
THREE DECIMAL ±.005		INTERPRET GEOMETRIC TOLERANCING PER:			
FOUR DECIMAL ±.002		MATERIAL			
NEXT ASSY	USED ON	FINISH		ADDRESS:	
APPLICATION		DO NOT SCALE DRAWING		2533 Centennial Blvd. Jeffersville, IN 47130 Phone: 812-670-4174 Fax: 812-670-4175 E-Mail: mle@mllelectronics.com	
TITLE: PC156HR SERIES		SIZE		REV	
C		DWG. NO.		B	
SCALE 8:1		SHEET 1 OF 1			