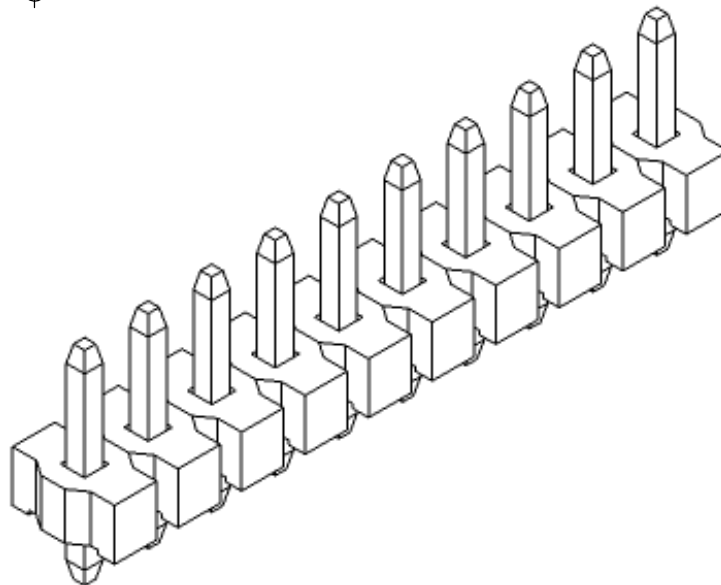
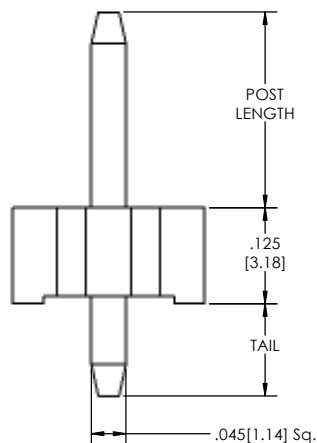
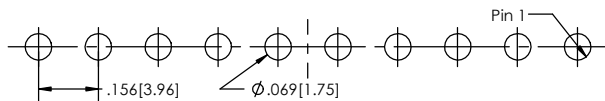
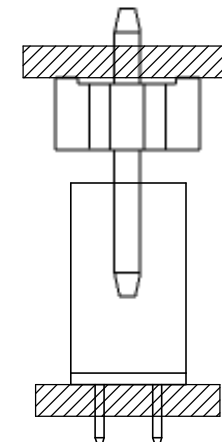


RECOMMENDED PC BOARD LAYOUT

SCALE 4:1



APPLICATION



PC156HC - [XX] - [S] - [XXX] - [XX] - [XXX] - [T] - [LF]
(A) (B) (C) (D) (E) (F) (G)

- A. Pins Per Row
- 1 through 24
- B. Row Specification
- S= Single Row
- C. Desired Tail
- Please Specify
- D. Pin Options
- See Pin Options below
- E. Desired Post
- Please Specify
- If Post is left blank: Overall Length - Tail - .125[3.17] = Post
- F. Plating Options
- See Plating Options below
- G. Lead Free

Mates with:
PC156-XX-S-02
PC156-XX-S-04

Plating options
T-Matte Tin all Over

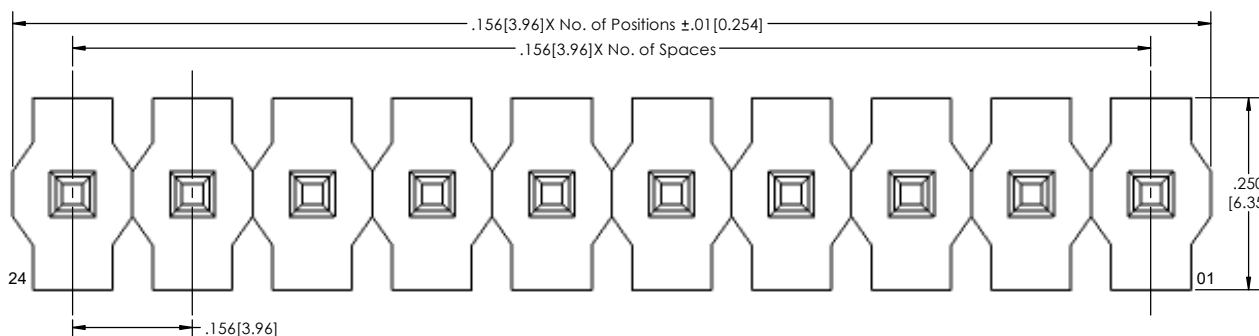
Specifications:
Current Rating: 7.9 Ampere
Insulation Resistance: 5000M Ohms Min.
Dielectric Withstanding: 1500V AC/DC
Contact Resistance: 20M Ohms Max.
Operation Temperature: -55°C to +105°C
Max. Process Temperature
IR Reflow: 280°C up to 10 secs.
Wave: 250°C up to 10 secs.
Manual Solder: 380°C up to 5 secs.

Pin Table	
Overall Length	
.450[11.43]	02
.650[16.51]	04
.850[21.59]	06
1.050[26.67]	08
1.250[31.75]	10

Post + Tail + .125[3.17]
must not exceed Overall
Length

Materials:
Contact Material: Phosphor Bronze
Insulator Material: LCP, UL94V-0
Plating: Matte Tin over 50" [1.27] Ni

Tails may be clipped to achieve specific dimensions.
Products cut to specific sizes are uncancellable/ nonreturnable.
Parts are subject to change without notice.



PROPRIETARY AND CONFIDENTIAL
THE INFORMATION CONTAINED IN THIS
DRAWING IS THE SOLE PROPERTY OF
Major League Electronics. ANY
REPRODUCTION IN PART OR AS A WHOLE
WITHOUT THE WRITTEN PERMISSION OF
Major League Electronics IS
PROHIBITED.

UNLESS OTHERWISE SPECIFIED:		NAME	DATE
DIMENSIONS ARE IN INCHES		DRAWN	EOW 10/11/16
TOLERANCES:		CHECKED	GWE 10/11/16
ONE DECIMALS ±.100		ENG APPR.	
TWO DECIMAL ±.010		MFG APPR.	
THREE DECIMAL ±.005		ADDRESS:	
FOUR DECIMAL ±.002		2533 Centennial Blvd.	
NEXT ASSY USED ON		Jeffersonville, IN 47130	
APPLICATION		Phone: 812-670-4174	
		Fax: 812-670-4175	
		E-Mail: mle@mlelectronics.com	
		TITLE: PC156HC SERIES	
		SIZE	DWG. NO.
		C	B
		SCALE 8:1	
		SHEET 1 OF 1	

