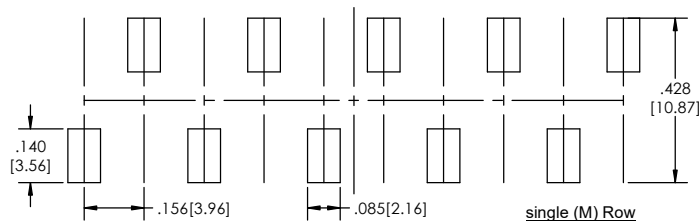
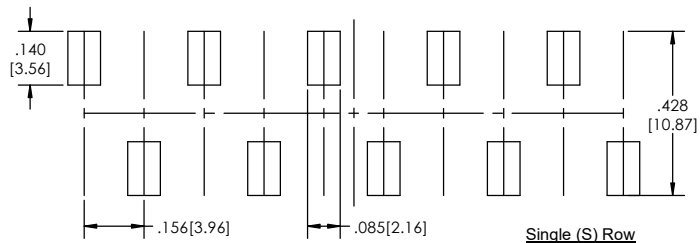
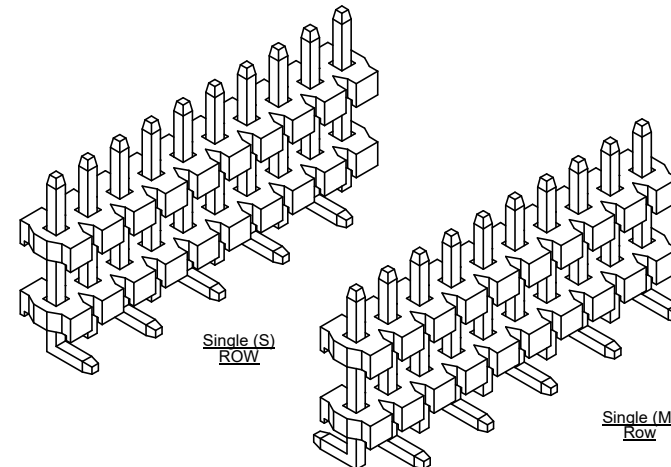
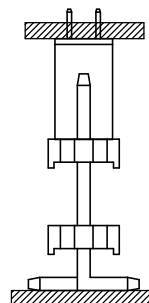


RECOMMENDED PC BOARD LAYOUT

SCALE 4:1



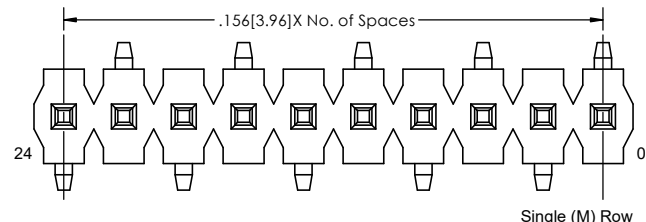
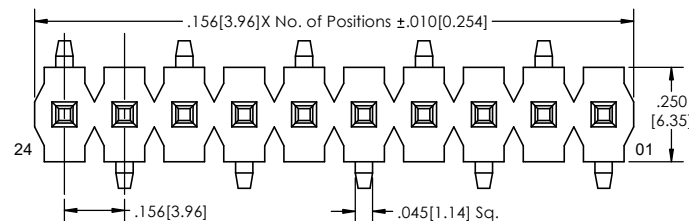
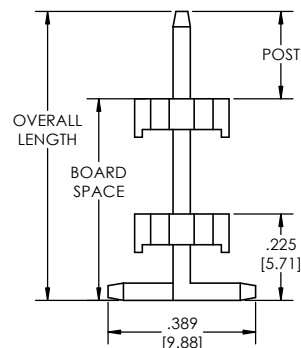
APPLICATION



PC156BSM - XX - S - XXX - XX - T - XXX - X - XX - X - LF
(A) (B) (C) (D) (E) (F) (G) (H) (I) (J)

- A. Pins Per Row
- 01 Through 24
- B. Row Specification
- S= Single Row
- C. Desired Post Height
- .040[1.01] - .600[15.24]
- If Post is not specified then:
Post(P) = Overall Length(L) - Board Space(B)
- D. Pin Options
- See Pin Options below
- E. Plating Options
- See Plating Options below
- F. Desired Board Space
- .309[7.84] - .950[24.13]
- G. Footprint Option
- S= pin 1 left
- M= pin 1 right
- H. Packaging Information
- TR= Tape and Reel
- TB= Tube
- I. Pad
- P= Plastic
- O= No Pad
- If left blank, packaging at MLE's discretion
Pad may be metal, mylar or plastic
- J. Lead Free

Mates with:
PC156S-XX-S-02
PC156S-XX-S-04



Specifications:
Current Rating: 7.9 Ampere
Insulation Resistance: 5000M Ohms Min.
Dielectric Withstanding: 1500V AC/DC
Contact Resistance: 20M Ohms Max.
Operation Temperature: -55°C to +105°C
Max. Process Temperature
IR Reflow: 280°C up to 10 secs.
Wave: 250°C up to 10 secs.
Manual Solder: 380°C up to 5 secs.

Materials:
Contact Material: Phosphor Bronze
Insulator Material: LCP, UL94V-0
Plating: Matte Tin over 50" [1.27] Ni

Pin Options	
Overall Length	
.520[13.20mm]	04
.614[15.59mm]	06
.748[18.99mm]	08
1.088[27.63mm]	14
Post + Board Space must not exceed Overall Length	

Tails may be clipped to achieve specific dimensions.
Products cut to specific sizes are uncancellable/ nonreturnable.
Parts are subject to change without notice.



PROPRIETARY AND CONFIDENTIAL
THE INFORMATION CONTAINED IN THIS DRAWING IS THE SOLE PROPERTY OF Major League Electronics. ANY REPRODUCTION IN PART OR AS A WHOLE WITHOUT THE WRITTEN PERMISSION OF Major League Electronics IS PROHIBITED.

UNLESS OTHERWISE SPECIFIED:		NAME	DATE
DIMENSIONS ARE IN INCHES		DRAWN	EOW 10/11/16
TOLERANCES:		CHECKED	GWE 10/11/16
ONE DECIMALS ±.100		ENG APPR.	
TWO DECIMAL ±.010		MFG APPR.	
THREE DECIMAL ±.005		ADDRESS:	
FOUR DECIMAL ±.002		2533 Centennial Blvd. Jeffersonville, IN 47130 Phone: 812-670-4174 Fax: 812-670-4175 E-Mail: mle@mlelectronics.com	
NEXT ASSY	USED ON	TITLE: PC156BSM SERIES	
APPLICATION		DO NOT SCALE DRAWING	FINISH
		SIZE DWG. NO. C	
		SCALE 4:1	
		SHEET 1 OF 1	