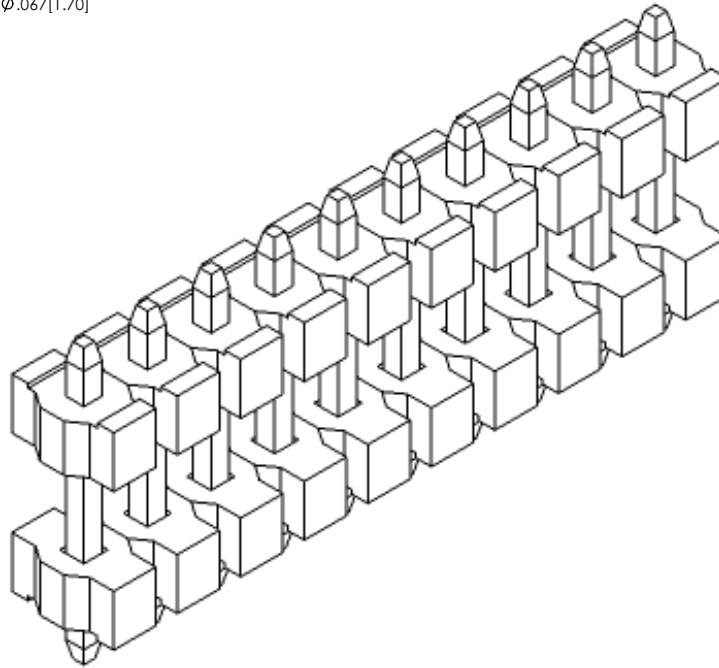
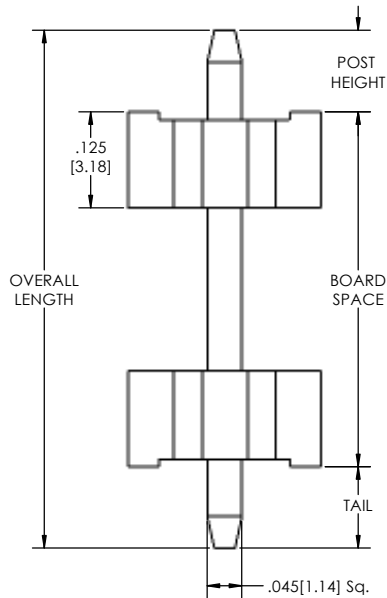
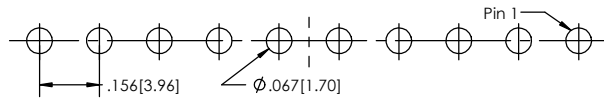
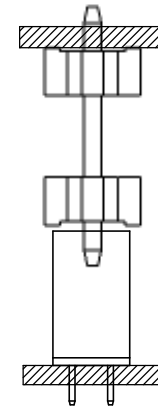


RECOMMENDED PC BOARD LAYOUT

SCALE 4:1



APPLICATION



PC156BS - **XX** - **S** - **XXX** - **XX** - **XXX** - **T** - **XXX** - **LF**
(A) **(B)** **(C)** **(D)** **(E)** **(F)** **(G)** **(H)**

- A. Pins Per Row
 - 1 through 24
 B. Row Specification
 - S= Single Row
 C. Desired Tail Length
 - Please specify tail length
 - e.g. .100[2.54]= 100
 D. Pin Options
 - See Pin Options below
 E. Desired Post Height
 - .040[1.02] - .800[20.32]
 - If Post is not specified:
 Post(P) = Overall Length(L) - Board Space(B) - Tail(T)
 F. Plating Options
 - See Plating Options below
 G. Desired Board Space
 - Please Specify required space
 - e.g. .100[2.54]= 100
 H. Lead Free

Mates with:
 PC156S-XX-S-02
 PC156S-XX-S-04

Plating options
 T-Matte Tin all Over

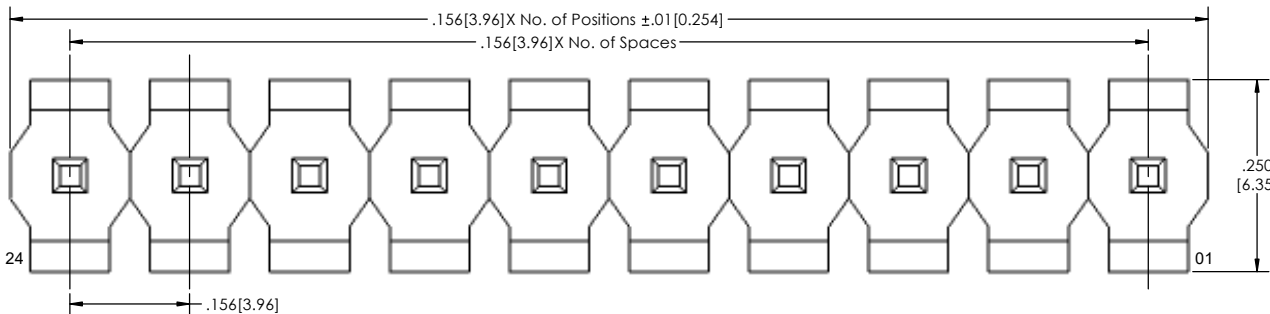
Specifications:
 Current Rating: 7.9 Ampere
 Insulation Resistance: 5000M Ohms Min.
 Dielectric Withstanding: 1500V AC/DC
 Contact Resistance: 20M Ohms Max.
 Operation Temperature: -55°C to +105°C
 Max. Process Temperature
 IR Reflow: 280°C up to 10 secs.
 Wave: 250°C up to 10 secs.
 Manual Solder: 380°C up to 5 secs.

Pin Options	
Overall Length	
.580[14.76mm]	04
.674[17.15mm]	06
.808[20.55mm]	08
1.148[29.20mm]	14

Post + Tail + Board Space
 must not exceed
 Overall Length

Materials:
 Contact Material: Phosphor Bronze
 Insulator Material: LCP, UL94V-0
 Plating: Matte Tin over 50" [1.27] Ni

Tails may be clipped to achieve specific dimensions.
 Products cut to specific sizes are uncancellable/ nonreturnable.
 Parts are subject to change without notice.



PROPRIETARY AND CONFIDENTIAL
 THE INFORMATION CONTAINED IN THIS
 DRAWING IS THE SOLE PROPERTY OF
 Major League Electronics. ANY
 REPRODUCTION IN PART OR AS A WHOLE
 WITHOUT THE WRITTEN PERMISSION OF
 Major League Electronics IS
 PROHIBITED.

UNLESS OTHERWISE SPECIFIED:		NAME		DATE		TITLE: PC156BS SERIES SIZE DWG. NO. C REV C SCALE 8:1 SHEET 1 OF 1
DIMENSIONS ARE IN INCHES		DRAWN	EOW	10/11/16		
TOLERANCES:		CHECKED	GWE	10/11/16		
ONE DECIMALS ±.100		ENG APPR.				
TWO DECIMAL ±.010		MFG APPR.			ADDRESS: 2533 Centennial Blvd. Jeffersonville, IN 47130 Phone: 812-670-4174 Fax: 812-670-4175 E-Mail: mle@mlelectronics.com	
THREE DECIMAL ±.005		INTERPRET GEOMETRIC TOLERANCING PER:				
FOUR DECIMAL ±.002		MATERIAL		FINISH		
NEXT ASSY	USED ON	APPLICATION		DO NOT SCALE DRAWING		