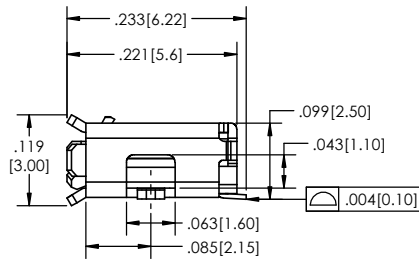
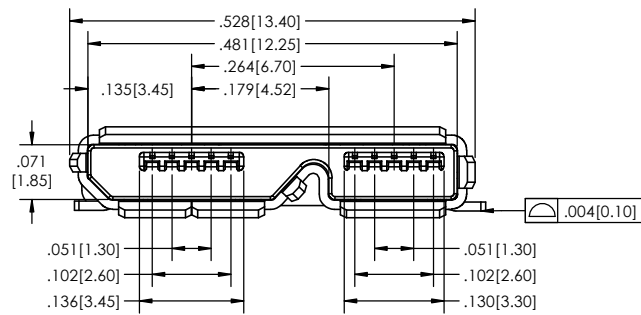
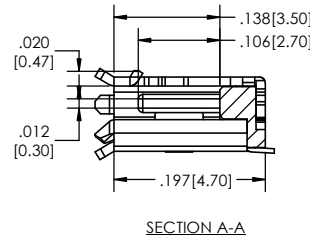
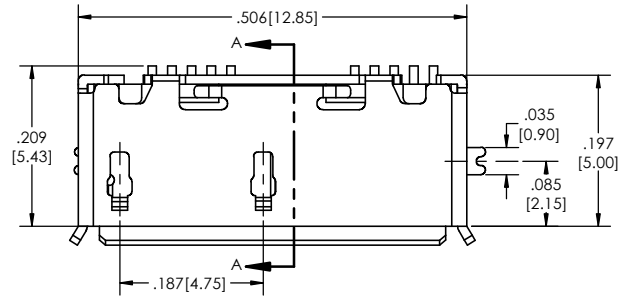
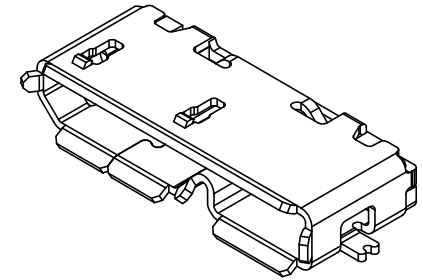
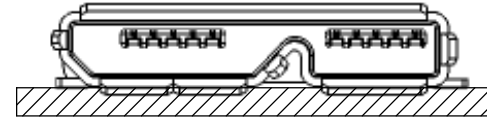


APPLICATION



MUSB-3 [10] - [SSM] - [H] - [B] - [BM] - [TR] - [LF]
 (A) (B) (C) (D) (E) (F) (G)

- A. Number of Contacts
 - 10 positions
- B. Mounting Option
 - SSM= Shell Surface Mount
- C. Contact Plating
 - See Plating Option box below
- D. Type
 - B
- E. BM= Bottom Mount
- F. Packaging Options
 - TR= Tape and Reel
- G. Lead Free

Plating options	
H	30µ Gold on Contact Area/ Matte Tin on Tail

Specifications:

- Electrical:
 - Voltage Rating: 100 V AC/DC
 - Current Rating:
 - Signal Mode: 1.0A AC/DC All Pins
 - Power Mode:
 - Signal (Pins 2, 3, 4, 6, 7, 8, 9): at 0.5A AC/DC
 - Power (Pins 1, 5) at 1.8A AC/DC
 - Contact Resistance: 30 Milliohms Max.
 - Insulation Resistance: 1000 Megohms Min.
 - Dielectric Withstanding Voltage: 100V AC/ Minute
 - Operating Temperature: -30°C to +85°C

Mechanical:

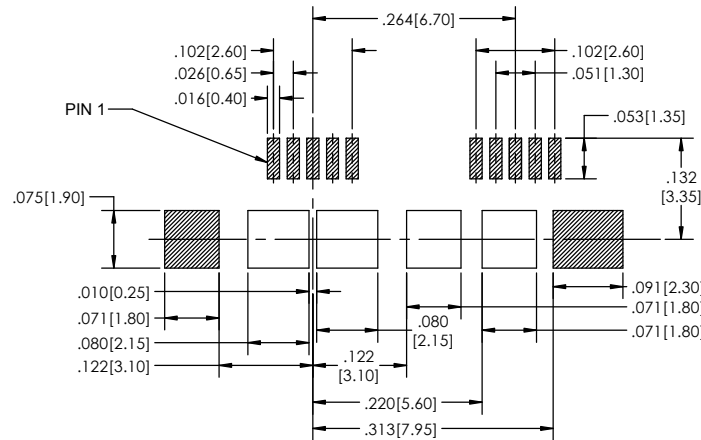
- Mating Force: 35N Max.
- Unmating Force: 10N Min.
- Durability: 10,000 Cycles

Material:

- Housing: LCP, UL94V-0, Black
- Terminal: Phosphor Bronze (C5191R-H) T= 0.15mm
- Shell: Stainless Steel (SUS304) T= 0.25mm

Finish:

- Underplating: Nickel
- Plating:
 - Contact Area: See Plating Options
 - Solder Tails: Gold Flash or Matte Tin
 - Metallic Shell: Matte Tin



RECOMMENDED PCB LAYOUT



PROPRIETARY AND CONFIDENTIAL
 THE INFORMATION CONTAINED IN THIS DRAWING IS THE SOLE PROPERTY OF Major League Electronics. ANY REPRODUCTION IN PART OR AS A WHOLE WITHOUT THE WRITTEN PERMISSION OF Major League Electronics IS PROHIBITED.

UNLESS OTHERWISE SPECIFIED:		NAME	DATE
DIMENSIONS ARE IN INCHES		DRAWN: EOW	12/11/14
TOLERANCES:		CHECKED: GWE	12/11/14
ONE DECIMALS ±.100		ENG APPR:	
TWO DECIMAL ±.010		MFG APPR:	
THREE DECIMAL ±.002		ADDRESS:	
FOUR DECIMAL ±.002		2533 Centennial Blvd.	
NEXT ASSY USED ON		Jeffersonville, IN 47130	
APPLICATION		Phone: 812-670-4174	
DO NOT SCALE DRAWING		Fax: 812-670-4175	
		E-Mail: mle@mlelectronics.com	



TITLE: MUSB-310-SSM-H-B-BM-TR-LF		REV
SIZE	DWG. NO.	B
C		
SCALE 8:1	SHEET 1 OF 1	