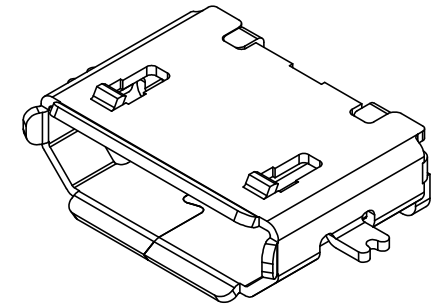
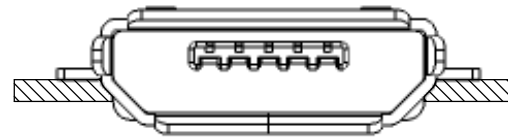


APPLICATION



MUSB-2 **[05]** - **[SSM]** - **[H]** - **[B]** - **[MM]** - **[TR]** - **[LF]**
(A) **(B)** **(C)** **(D)** **(E)** **(F)** **(G)**

- A. Number of Contacts
 - 05 Positions
- B. Mounting Option
 - SSM= Shell Surface Mount
- C. Contact Plating
 - See Plating Option box below
- D. Type
 - B
- E. Mount style
 - MM= Middle Mount
- F. Packaging Options
 - TR= Tape and Reel
- G. Lead Free

Plating options	
H	30µ Gold on Contact Area/ Matte Tin on Tail

Specifications:

Electrical:

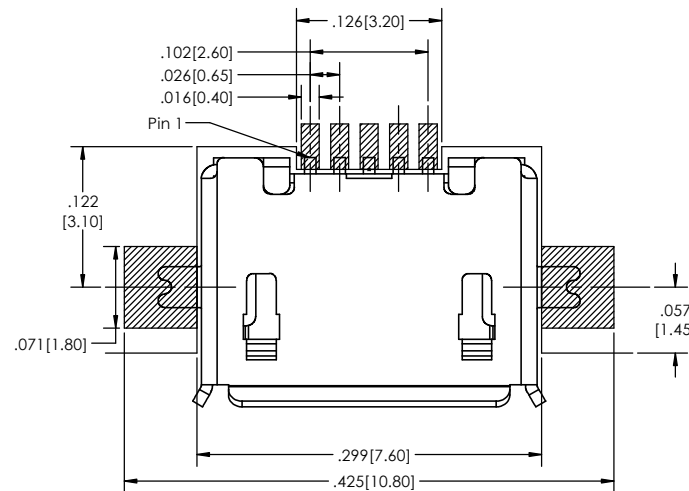
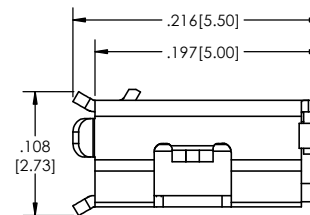
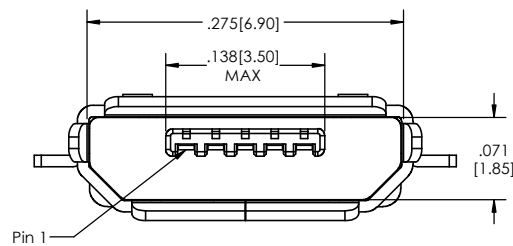
Voltage Rating: 100 V AC/DC
 Current Rating:
 Signal Mode: 1.0A AC/DC All Pins
 Power Mode:
 Signal (Pins 2, 3, 4): at 1.0A AC/DC
 Power (Pins 1, 5) at 1.8A AC/DC
 Contact Resistance: 30 Milliohms Max.
 Insulation Resistance: 1000 Megohms Min.
 Dielectric Withstanding Voltage: 500V AC/ Minute
 Operating Temperature: -30°C to +85°C

Mechanical:

Mating Force: 35N Max.
 Unmating Force: 10N Min.
 Durability: 10,000 Cycles
 Material:
 Housing: LCP, UL94V-0, Black
 Terminal: Copper Alloy
 Shell: Stainless Steel (SUS304) T= 0.25mm

Finish:

Underplating: Nickel
 Plating:
 Contact Area: See Plating Options
 Solder Tails: Gold Flash or Matte Tin
 Metallic Shell: Matte Tin



RECOMMENDED PCB LAYOUT



PROPRIETARY AND CONFIDENTIAL
 THE INFORMATION CONTAINED IN THIS
 DRAWING IS THE SOLE PROPERTY OF
 Major League Electronics. ANY
 REPRODUCTION IN PART OR AS A WHOLE
 WITHOUT THE WRITTEN PERMISSION OF
 Major League Electronics IS
 PROHIBITED.

UNLESS OTHERWISE SPECIFIED:		NAME	DATE
DIMENSIONS ARE IN INCHES TOLERANCES: ONE DECIMALS ±.100 TWO DECIMAL ±.005 THREE DECIMAL ±.002 FOUR DECIMAL ±.002		DRAWN	EOW 12/12/14
		CHECKED	GWE 12/12/14
		ENG APPR.	
		MFG APPR.	
INTERPRET GEOMETRIC TOLERANCING PER:		ADDRESS:	
MATERIAL:		2533 Centennial Blvd. Jeffersonville, IN 47130	
NEXT ASSY USED ON:		Phone: 812-670-4174	
APPLICATION		Fax: 812-670-4175	
DO NOT SCALE DRAWING		E-Mail: mle@mllelectronics.com	
FINISH		TITLE: MUSB-205-SMM-H-B-MM-TR-LF	
		SIZE DWG. NO.	REV B
		SCALE 12:1	SHEET 1 OF 1

