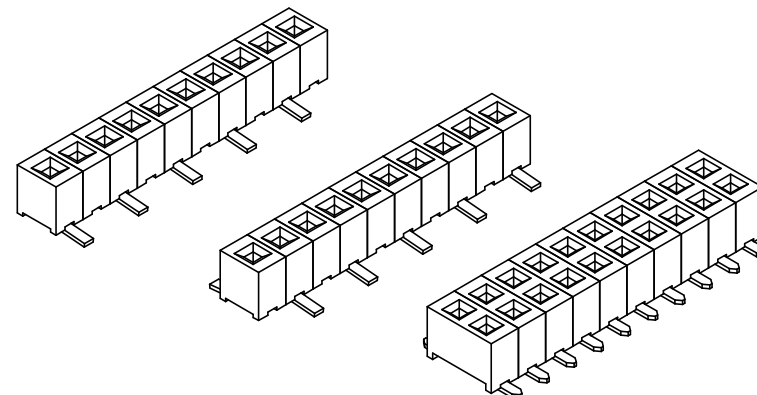
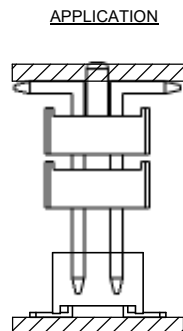
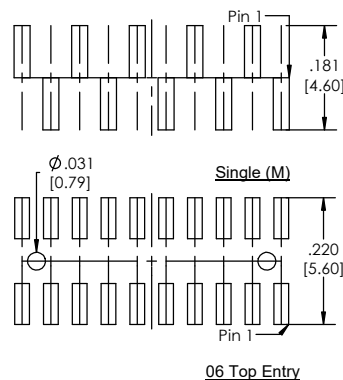
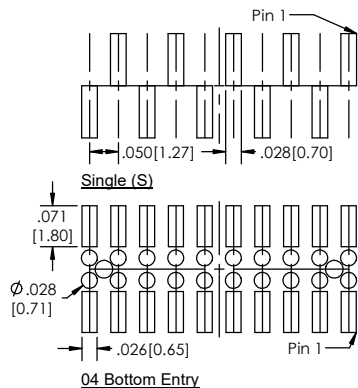


Recommended P.C. Board Layout

SCALE 6:1



LSSHS-5 (A) (B) (C) (D) (E) (F) (G) (H) (I) (J)

- A. Pins Per Row
 - 1 through 40
- B. Row Specification
 - S= Single Row
 - D= Double Row
- C. Surface Mount
 - 04 Bottom Entry
 - 06 Top Entry
- D. Plating Options
 - See Plating Options below
- E. Footprint Orientation (Single Row)
 - S= Pin 1 right
 - M= Pin 1 left
- F. Polarized Position
 - Leave blank if not needed
 - If required, specify empty pin position
 - e.g. 012 for Pin 12
- G. Packing Information
 - TR= Tape and Reel
 - TB= Tube
- H. Cap Option
 - P= Pick and Place Cap
 - O= No Cap
- I. Alignment Pin Option
 - Leave blank if not needed
 - Ap= With
- J. Lead Free

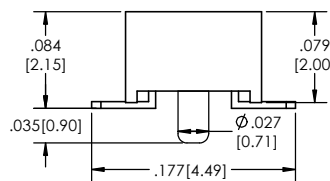
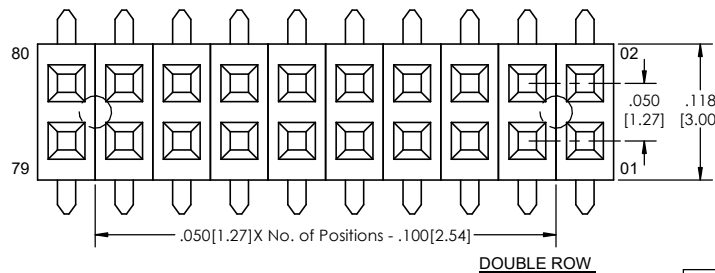
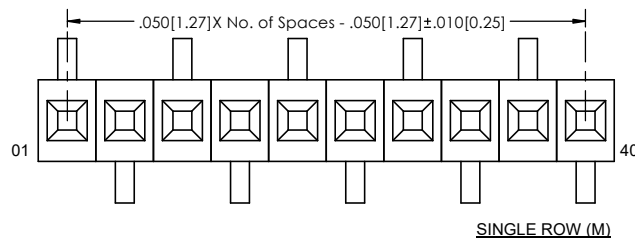
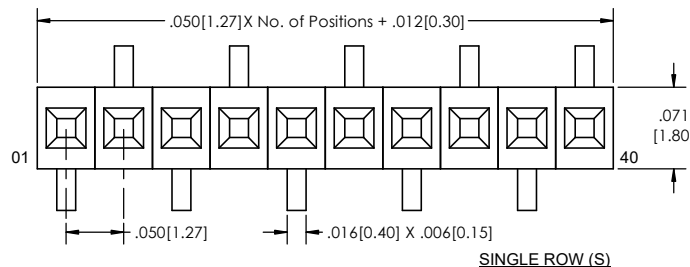
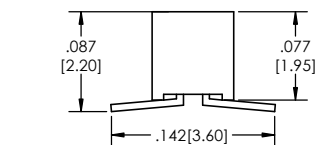
Plating options	
G	10µ Gold on Contact Area/ Flash on Tail
F	Gold Flash over Entire Pin
H	30µ Gold on Contact Area/ Matte Tin on Tail

Specifications:
 Current Rating: 1.0 Ampere
 Insulation Resistance: 1000M Ohms Min.
 Dielectric Withstanding: 300V AC
 Contact Resistance: 20M Ohms Max.
 Operation Temperature: -40°C to +105°C
 Max. Process Temperature
 Peak: 260°C up to 20 secs.
 Process: 230°C up to 60 secs.
 Wave: 260°C up to 6 secs.
 Manual Solder: 350°C up to 5 secs.

Materials:
 Contact Material: Phosphor Bronze
 Insulator Material: Nylon 6T
 Plating: Au over Ni

Tails may be clipped to achieve specific dimensions.

Products cut to specific sizes are uncancellable/ nonreturnable.
 Parts are subject to change without notice.



PROPRIETARY AND CONFIDENTIAL
 THE INFORMATION CONTAINED IN THIS DRAWING IS THE SOLE PROPERTY OF Major League Electronics. ANY REPRODUCTION IN PART OR AS A WHOLE WITHOUT THE WRITTEN PERMISSION OF Major League Electronics IS PROHIBITED.

UNLESS OTHERWISE SPECIFIED:		NAME		DATE	
DIMENSIONS ARE IN INCHES		DRAWN		EOW	
TOLERANCES:		CHECKED		GWE	
ONE DECIMAL ±.100		ENG APPR.		04/13/16	
TWO DECIMAL ±.010		MFG APPR.			
THREE DECIMAL ±.005		INTERPRET GEOMETRIC TOLERANCING PER:			
FOUR DECIMAL ±.002		MATERIAL			
NEXT ASSY		USED ON		FINISH	
APPLICATION		DO NOT SCALE DRAWING			
		ADDRESS:		2533 Centennial Blvd. Jeffersonville, IN 47130 Phone: 812-670-4174 Fax: 812-670-4175 E-Mail: mle@mlelectronics.com	
		TITLE: LSSHS-5 SERIES		SIZE DWG. NO.	
		C		F	
		SCALE 12:1		SHEET 1 OF 1	

