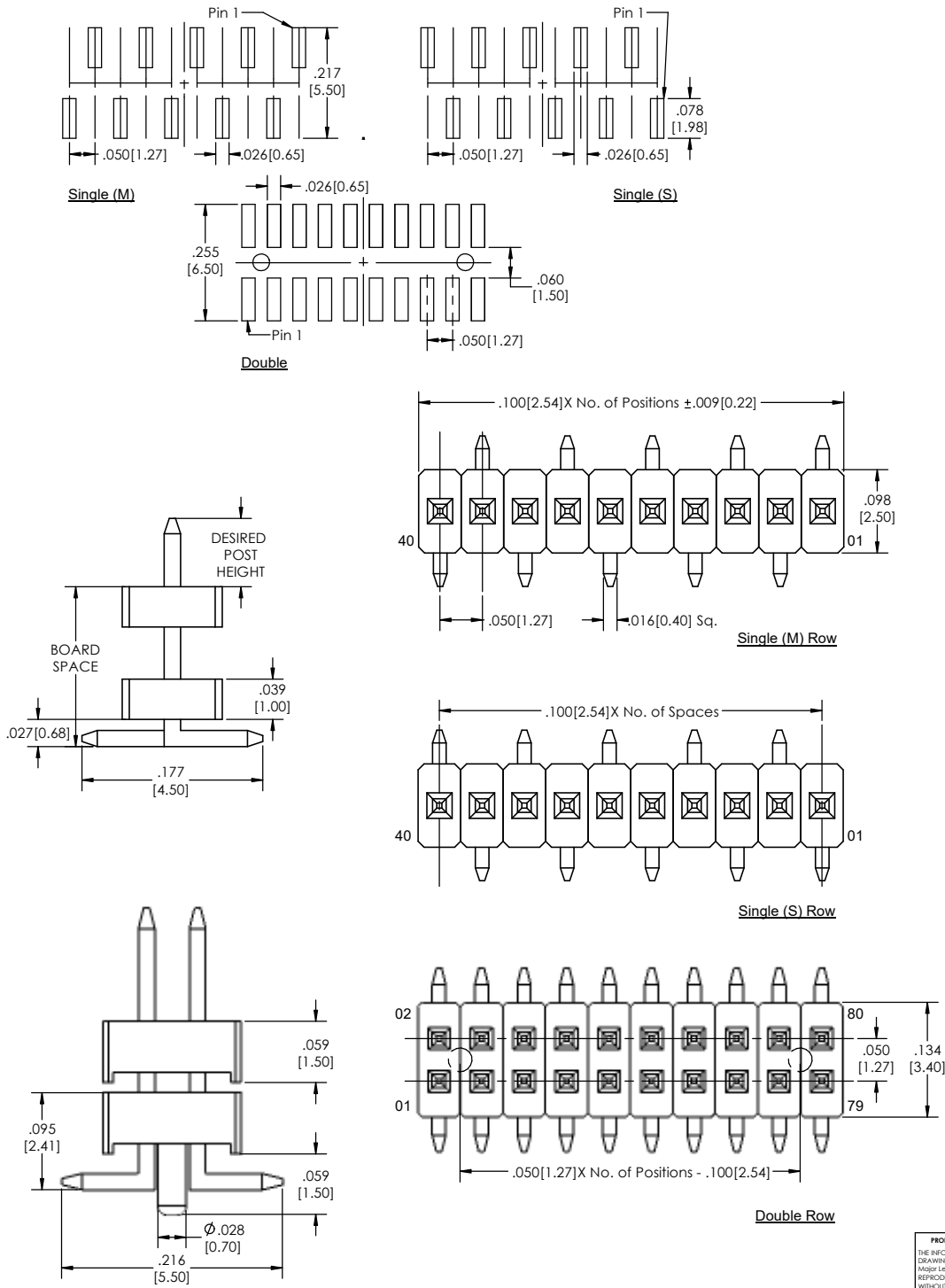
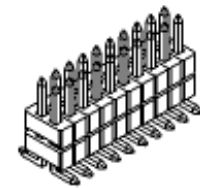
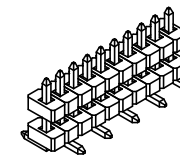
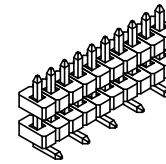


Recommended P.C. Board Layout
SCALE 6:1



Single (M)

Single (S)

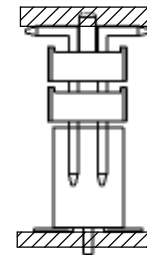


BSTM-5 **XX** - **D** - **XXX** - **XX** - **XX** - **XXX** - **XXX** - **X** - **XX** - **X** - **XX** - **LF**
(A) **(B)** **(C)** **(D)** **(E)** **(F)** **(G)** **(H)** **(I)** **(J)** **(K)** **(L)**

- A. Pins Per Row
- 1 through 40
- B. Row Specification
- D= Double Row
- C. Desired Post Height
- Please Specify
- e.g. .200[5.08]= 200
- If Post is not specified: Overall Length - Board Spaces = Post
- D. Pin Options
- See Pin Options below
- E. Plating Options
- See Plating Options below
- F. Desired Board Space
- Please Specify
- e.g. .200[5.08]= 200
- G. Polarized Position
- Leave blank if not needed
- If required, specify empty pin position
- e.g. 012 for Pin 12
- H. Footprint Orientation
- S= Pin 1 right
- M= Pin 1 left
- I. Packing Information
- TR-P= Tape and Reel
- TB-P= Tube
- J. Pad
- P= Plastic
- O= No Pad
- If left blank, packaging at MLE's discretion
- Pad may be metal, mylar or plastic
- K. Alignment Pin Option
- If not required leave blank.
- AP=With
- L. Lead Free

Mates with:
LSSH
SMSS
SSHS

APPLICATION



Plating options	
G	-10µ Gold on Contact Area/ Flash on Tail
T	-Matte Tin all Over
GT	-10µ Gold on Contact Area/ Matte Tin on Tail
H	-30µ Gold on Contact Area/ Matte Tin on Tail
F	-Gold Flash over Entire Pin
FT	-Gold Flash on Contact Area/ Matte Tin on Tail

Pin Options	
Length	
.293	7.44mm 06
.390	9.91mm 08
.440	11.18mm 10
.490	12.45mm 12
.540	13.71mm 14
.590	14.99mm 16
.640	16.26mm 18
.690	17.53mm 20
.740	18.80mm 22
.790	20.07mm 24

Specifications:
 Current Rating: 1.0 Ampere
 Insulation Resistance: 1000M Ohms Min.
 Dielectric Withstanding: 300V AC
 Contact Resistance: 20M Ohms Max.
 Operation Temperature: -40°C to +105°C
 Max. Process Temperature
 Peak: 260°C up to 10 secs.
 Process: 230°C up to 60 secs.
 Wave: 260°C up to 6 secs.
 Reflow: 260°C up to 10 secs.
 Manual Solder: 350°C up to 5 secs.

Materials:
 Contact Material: Phosphor Bronze
 Insulator Material: Nylon 6T
 Plating: Au or Sn over 50µ" (1.27) Ni
 Tails may be clipped to achieve specific dimensions.

Products cut to specific sizes are uncancelable/ nonreturnable.
 Parts are subject to change without notice.



PROPRIETARY AND CONFIDENTIAL
 THE INFORMATION CONTAINED IN THIS DRAWING IS THE SOLE PROPERTY OF Major League Electronics. ANY REPRODUCTION IN PART OR AS A WHOLE WITHOUT THE WRITTEN PERMISSION OF Major League Electronics IS PROHIBITED.

UNLESS OTHERWISE SPECIFIED:		NAME	DATE
DRAWN	EOW	08/18/15	
CHECKED	GWE	08/18/15	
ENG APPR.			
MFG APPR.			
INTERPRET GEOMETRIC TOLERANCING PER:		ADDRESS:	
MATERIAL:		2533 Centennial Blvd.	
NEXT ASSY USED ON:		Jeffersonville, In 47130	
APPLICATION		Phone: 812-670-4174	
DO NOT SCALE DRAWING		Fax: 812-670-4175	
		E-Mail: mle@mlelectronics.com	

TITLE: BSTM-5 SERIES
 SIZE DWG. NO. **C** REV **F**
 SCALE 12:1 SHEET 1 OF 1