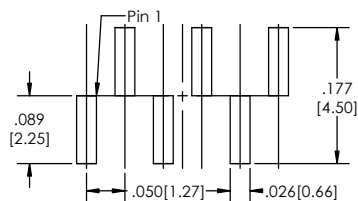


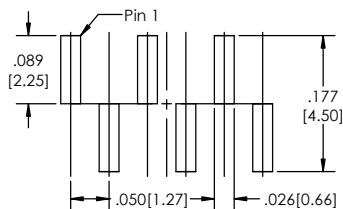
Recommended P.C. Board Layout

SCALE 8:1

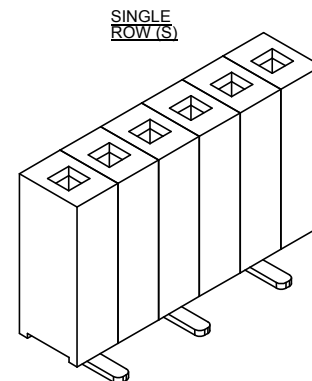
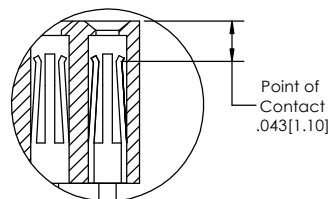
General Tolerance .002[0.05]



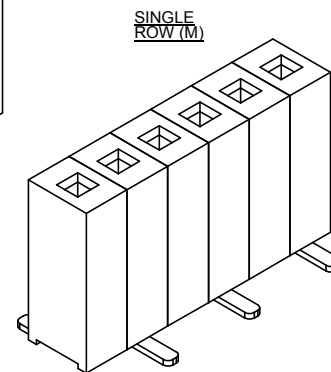
SINGLE ROW (S)



SINGLE ROW (M)



SINGLE ROW (S)



SINGLE ROW (M)

BLSSM-5 **XX** - **S** - **F** - **V** - **X** - **XX** - **X** - **LF**
(A) (B) (C) (D) (E) (F) (G) (H)

- A. Pins Per Row
-02 through 06
- B. Row Specification
- S= Single Row
- C. Plating Options
- See Plating Options below
- D. Vertical Surface Mount
- E. Footprint Orientation
- S= Pin 1 right
- M= Pin 1 left
- F. Packaging Option
- TR= Tape and Reel
- TB= Tube
- G. Pad
- P= Plastic
- K= Kapton
- O= No Pad
- H. Lead Free

Mates With:
BLTSM-5

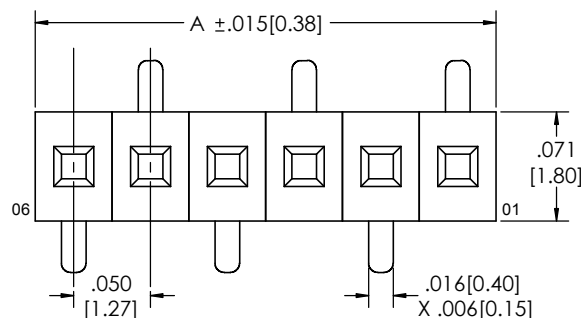
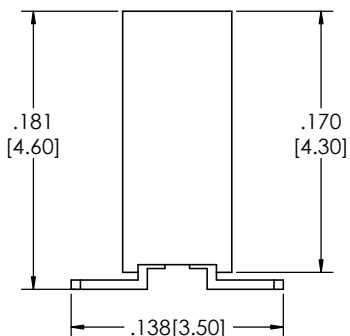
| Plating options |
|--------------------------------|
| F - Gold Flash over Entire Pin |

Specifications:
Current Rating: 1.0 Ampere
Insulation Resistance: 1000M Ohms Min.
Dielectric Withstanding: 300V AC
Contact Resistance: 20M Ohms Max.
Operation Temperature: -40°C to +105°C
Max. Process Temperature
Peak: 260°C up to 20 secs.
Process: 230°C up to 60 secs.
Wave: 260°C up to 6 secs.
Manual Solder: 350°C up to 5 secs.

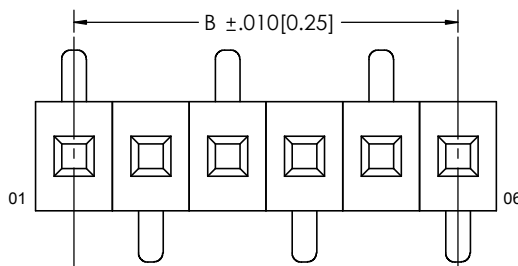
Materials:
Contact Material: Phosphor Bronze
Insulator Material: Thermoplastic, UL94V-0, PBT
Plating: Gold Flash over entire pin
Color: White

Tails may be clipped to achieve specific dimensions.

Products cut to specific sizes are uncancellable/ nonreturnable.
Parts are subject to change without notice.



Single Row (S)



Single Row (M)

| Pin Options | | |
|-----------------|-------------|-------------|
| Top Entry | 02 | |
| Pass Thru Entry | 06 | |
| | Dimensions | |
| Contacts | A | B |
| 02 | 0.114[2.89] | 0.050[1.27] |
| 03 | 0.164[4.16] | 0.100[2.54] |
| 04 | 0.214[5.43] | 0.150[3.81] |
| 05 | 0.264[6.70] | 0.200[5.08] |
| 06 | 0.314[7.97] | 0.250[6.35] |



PROPRIETARY AND CONFIDENTIAL
THE INFORMATION CONTAINED IN THIS
DRAWING IS THE SOLE PROPERTY OF
Major League Electronics. ANY
REPRODUCTION IN PART OR AS A WHOLE
WITHOUT THE WRITTEN PERMISSION OF
Major League Electronics IS
PROHIBITED.

| | | | | |
|--------------------------------------|--|--------------------------------|-----|--------------|
| UNLESS OTHERWISE SPECIFIED: | | NAME | | DATE |
| DIMENSIONS ARE IN INCHES | | DRAWN | EOW | 01/21/15 |
| TOLERANCES: | | CHECKED | GWE | 01/21/15 |
| ONE DECIMALS ±.100 | | ENG APPR. | | |
| TWO DECIMAL ±.010 | | MFG APPR. | | |
| THREE DECIMAL ±.005 | | ADDRESS: | | |
| FOUR DECIMAL ±.002 | | 2533 Centennial Blvd. | | |
| NEXT ASSY | | Jeffersonville, IN 47130 | | |
| USED ON | | Phone: 812-670-4174 | | |
| APPLICATION | | Fax: 812-670-4175 | | |
| DO NOT SCALE DRAWING | | E-Mail: mle@ml-electronics.com | | |
| INTERPRET GEOMETRIC TOLERANCING PER: | | TITLE: BLSSM-5-V SERIES | | REV |
| MATERIAL | | SIZE | | C |
| FINISH | | DWG. NO. | | C |
| | | SCALE 16:1 | | SHEET 1 OF 1 |

