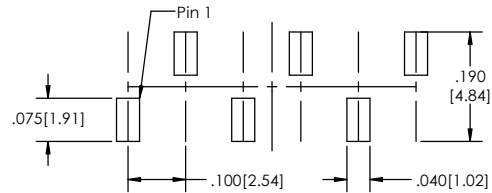
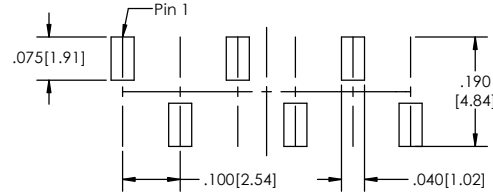


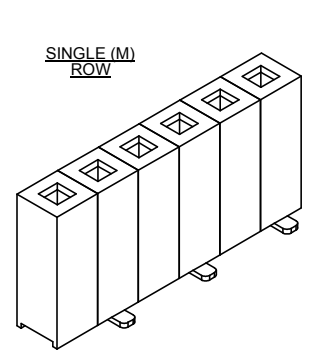
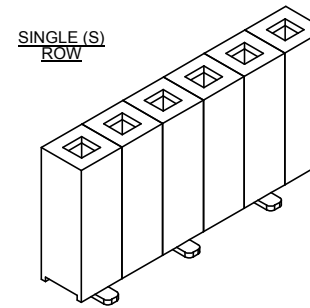
Recommended P.C. Board Layout
SCALE 6:1



SINGLE (S) ROW



SINGLE (M) ROW



BLSMBC-1 **XX** - **S** - **01** - **F** - **V** - **X** - **XX** - **X** - **LF**
(A) (B) (C) (D) (E) (F) (G) (H) (I)

- A. Pins Per Row
- 02 Through 06
- B. Row Specification
- S= Single Row
- C. Pin Option
- 01= .197[5.00] Body Height
- D. Plating Options
- See Plating Options below
- E. Direction
- V= Vertical
- F. Footprint
- S= pin 1 to the right
- M= pin 1 to the left
- G. Packing Information
- TR= Tape and Reel
- TB= Tube
- H. Pad
- P= Plastic
- K= Kapton
- O= No Pad
- If left blank, packaging at MLE's discretion
Pad may be metal, mylar or plastic
- I. Lead Free

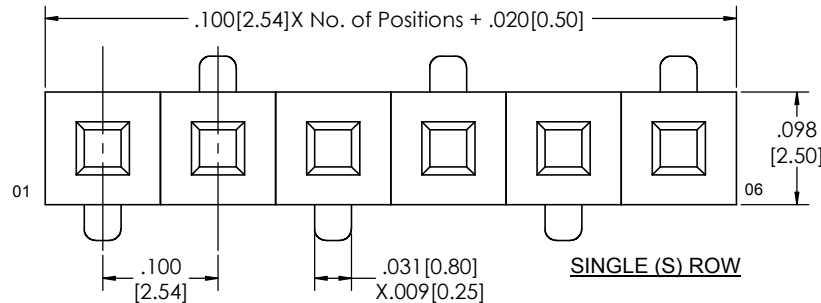
Plating options	
F	Gold Flash over Entire Pin

Specifications:
Insertion Depth: .145[3.68] to .250[6.35]
Insertion Force- Per Contact- H Plating:
5oz. [1.39N] avg with .025[0.64mm] sq. pin
Withdrawal Force- Per Contact- H Plating:
3oz. [0.83N] avg with .025[0.64mm] sq. pin
Current Rating: 3.0 Ampere
Insulation Resistance: 1000M Ohms Min.
Dielectric Withstanding: 600V AC
Contact Resistance: 20M Ohms Max.
Operation Temperature: -40°C to +105°C
Max. Process Temperature
Peak: 260°C up to 20 secs.
Process: 230°C up to 60 secs.
Wave: 260°C up to 6 secs.
Reflow: 260°C up to 10 secs.
Manual Solder: 350°C up to 5 secs.

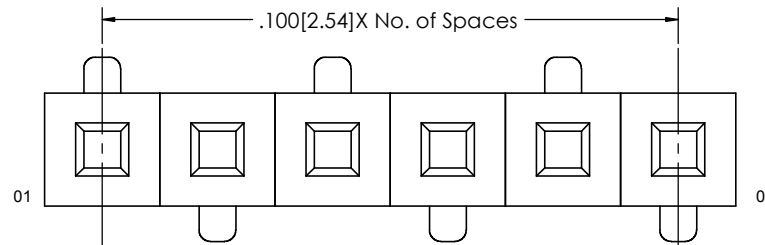
Materials:
Contact Material: Phosphor Bronze
Insulator Material: Nylon 6T
Plating: Au or Sn over 50µ" (1.27) Ni
Color: White

Tails may be clipped to achieve specific dimensions.

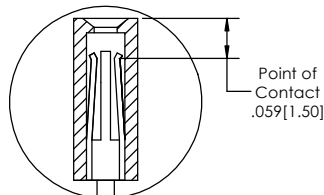
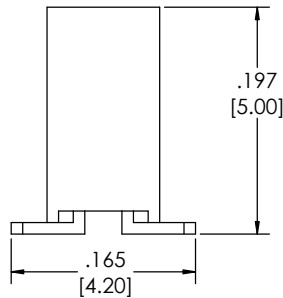
Products cut to specific sizes are uncancellable/ nonreturnable.
Parts are subject to change without notice.



SINGLE (S) ROW



SINGLE (M) ROW



PROPRIETARY AND CONFIDENTIAL
THE INFORMATION CONTAINED IN THIS DRAWING IS THE SOLE PROPERTY OF Major League Electronics. ANY REPRODUCTION IN PART OR AS A WHOLE WITHOUT THE WRITTEN PERMISSION OF Major League Electronics IS PROHIBITED.

UNLESS OTHERWISE SPECIFIED:		NAME	DATE
DIMENSIONS ARE IN INCHES		DRAWN	EOW 01/19/15
TOLERANCES:		CHECKED	GWE 01/19/15
ONE DECIMALS ±.100		ENG APPR.	
TWO DECIMAL ±.010		MFG APPR.	
THREE DECIMAL ±.005		ADDRESS:	
FOUR DECIMAL ±.002		2533 Centennial Blvd.	
NEXT ASSY USED ON		Jeffersonville, IN 47130	
APPLICATION		Phone: 812-670-4174	
DO NOT SCALE DRAWING		Fax: 812-670-4175	
		E-Mail: mle@mlelectronics.com	
		TITLE: BLSMBC-1-V Series	
		SIZE	DWG. NO.
		C	
		SCALE 12:1	SHEET 1 OF 1

