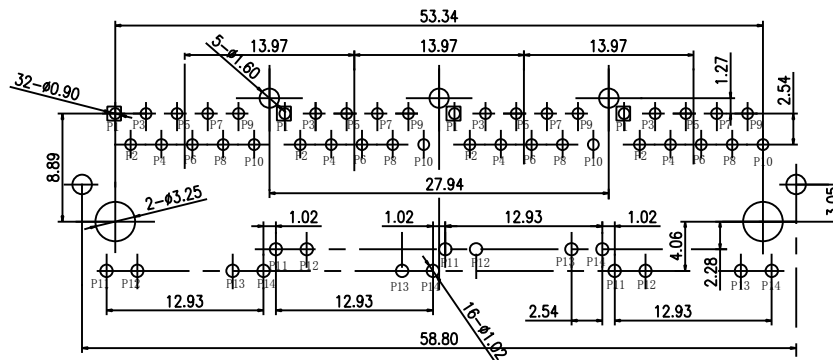
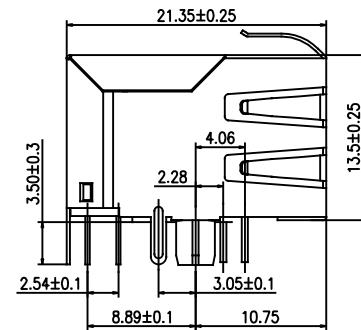
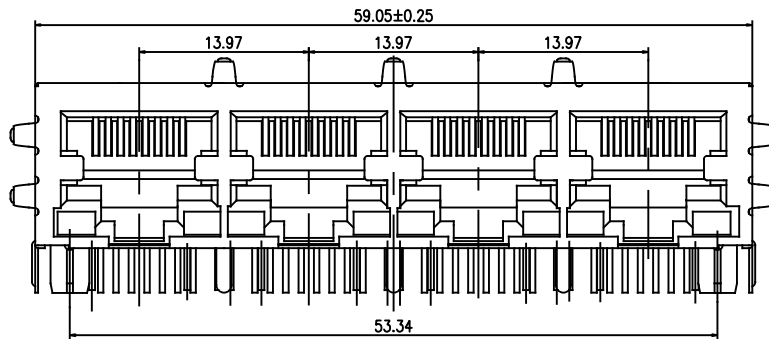
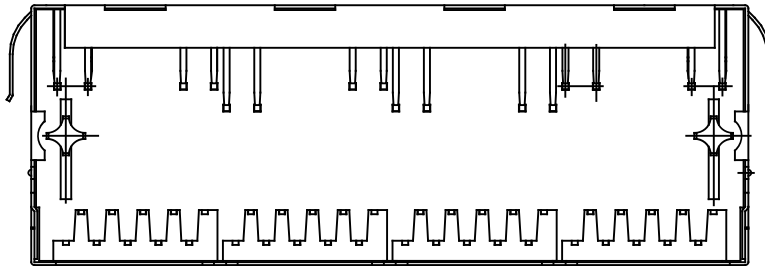


1 Port RJ-45 Jack With 100/1000 Base-T Magnetics Module

4. Mechanicals:

ROHS



P. C. B RECOMMENDED HOLE LAYOUT SEEN FROM COMPONENT SIDE.
ALL CENTERLINE DIMENSIONS ARE BASIC

- 4.1. Connector Material:
Housing: Thermoplastic UL94 V-0
Contact/Shield: Cooper alloy
Shield Plating: Nickel
Contact Plating: Selective gold 6u" Min
- 4.2. Tolerances comply with F. C. C dimension requirements
- 4.3. Durability: 800 mating Min

*Specification subject to change without notice

P/N: SHRJ-1432D1019	Units: mm	Unless otherwise stated otherwise tolerances as follows: .XX ±0.25	Rev: A	Draw : Kal	Date: 2010/05/08
	Scale: None		Page: 2/2	Checked : Ansom	Date: 2010/05/08
Alternative Component Source www.alternativecomponentsource.com			Approved: Ansom	Date: 2010/05/08	

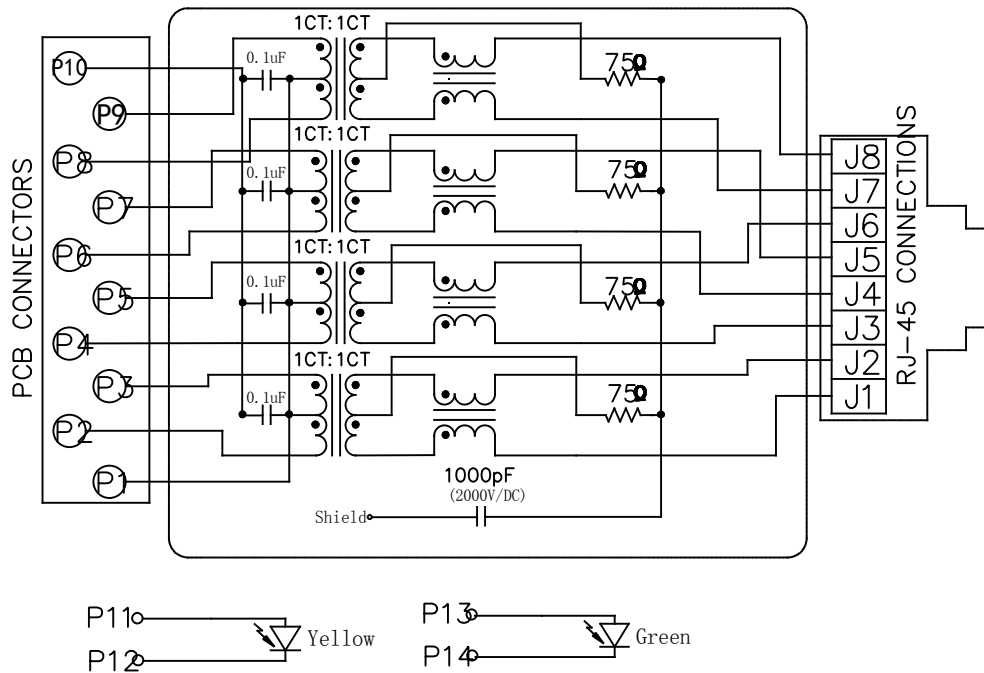
1 Port RJ-45 Jack With 100/1000 Base-T Magnetics Module

ROHS

1. Electrical Specifications: @25°C
 - 1.1. Isolation Voltage: 1500V/AC (Input to Output)
 - 1.2. OCL: 350uH Minimum @100KHz 100mV 8mA DC
 - 1.3. Insertion Loss: -1.2dB Maximum @100KHz-100MHz
 - 1.4. Return Loss:
 - 18dB Minimum @1MHz-30MHz
 - 14dB Minimum @30MHz-60MHz
 - 12dB Minimum @60MHz-80MHz
 - 10dB Minimum @80MHz-100MHz
 - 1.5. Common Mode Rejection: -30dB Minimum @1MHz-100MHz
 - 1.6. Cross Talk: -30dB Minimum @1MHz-100MHz
2. Operating and Storage Temperature:

- 2.1. Operating Temperature: 0°C to +70°C
- 2.1. Storage Temperature: -20°C to +85°C

3. Schematics:



*Specification subject to change without notice

P/N: SHRJ-1432D1019	Units: mm	Unless otherwise stated otherwise tolerances as follows: .XX ±0.25	Rev: A	Draw : Kal	Date: 2010/05/08
	Scale: None		Page: 1/2	Checked : Ansom	Date: 2010/05/08
Alternative Component Source www.alternativecomponentsource.com			Approved:	Ansom	Date: 2010/05/08