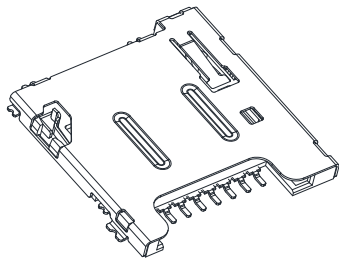




**ALTERNATIVE  
COMPONENT  
SOURCE**

a Major League Electronics Company

2533 Centennial Blvd. Jeffersonville, Indiana, USA 47130



## TECHNICAL CHARACTERISTICS

### 1. General Characteristics

Dimension: 14.90L x 14.24W x 1.45H mm  
 Weight: Approx. 0.4 g  
 Contact principle: Friction technology  
 Operating position: Shaft up / Down / Horizontal  
 Mounting System: SMT Type (without post)  
 Function: Push Push Type  
 Durability: 5,000 cycles min.

### 2. Mechanical Characteristics

Insulation material: Thermoplastic, UL 94V-0  
 RoHS Directive 2011/65/EU Compliant

### 3. Electrical Characteristics

Number of contacts: 8 pins  
 Contact resistance: 100 mΩ / 20 mA  
 Insulation resistance: >1000 MΩ / 500 VDC  
 Switch type: Blade  
 Operation: Normally Open

### 4. Solderability

Wave: Not applicable  
 IR reflow: 260C, 10 sec. Max.  
 Manual soldering: 360C, 3 sec. Max.

### 5. Environmental Characteristics

Operating temperature: - 25C ~ + 85C  
 Operating humidity: 10 % ~ 95 % RH  
 Storage temperature: - 40C ~ + 85C  
 Storage humidity: 10 % ~ 95 % RH

### 6. Pin Assignments

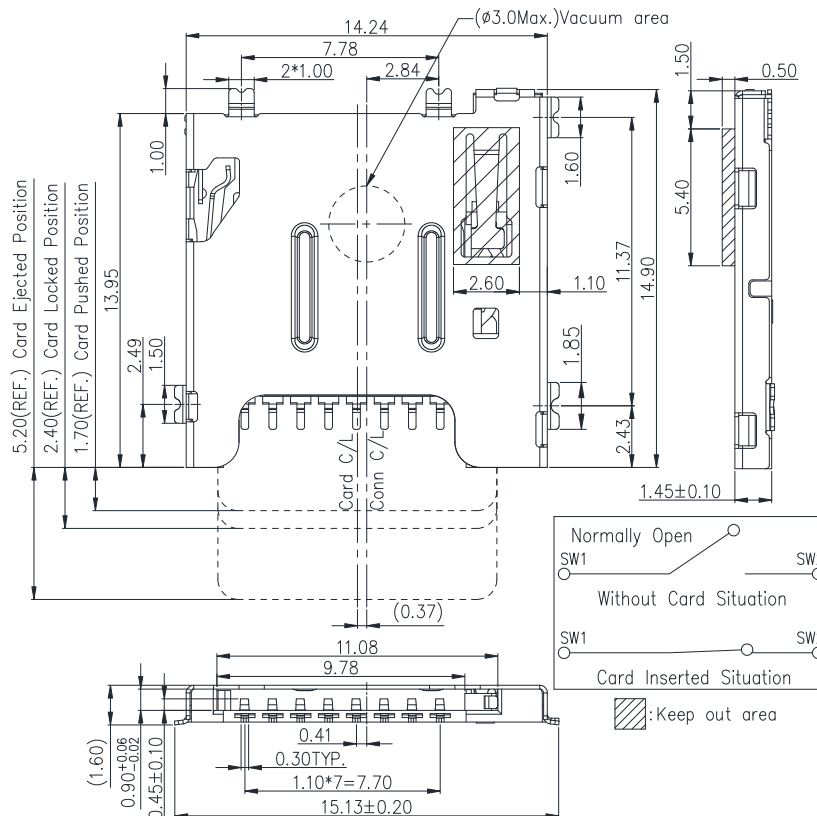
Pin	Micro SD Mode	
	Name	Description
1	DAT2	Data Line (Bit 2)
2	CD/DAT3	Card Detect / Data Line (Bit 3)
3	CMD	Command Response
4	VDD	Supply Voltage
5	CLK	Clock
6	VSS	Supply Voltage Ground
7	DAT0	Data Line (Bit 0)
8	DAT1	Data Line (Bit 1)

**Micro SD Card Connector**

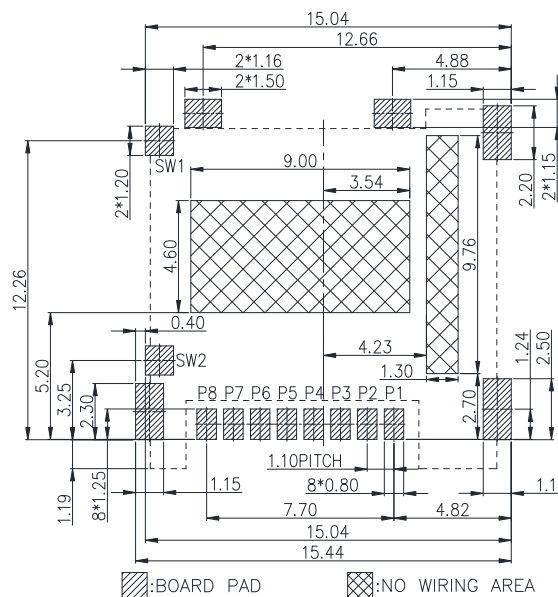
**Model No.: MCA-T07**

**Revision: 1.4**

**Date: MAR. 24, 2015**



Unit: mm; Tolerances: 0.15 mm  
**Mechanical outline dimension**



Unit: mm; Tolerances: 0.05 mm  
**Reference dimension for PCB layout**

Note:

1. Coplanarity of solder pins 0.10mm max.
2. Recommended thickness of solder paste > 0.15mm.