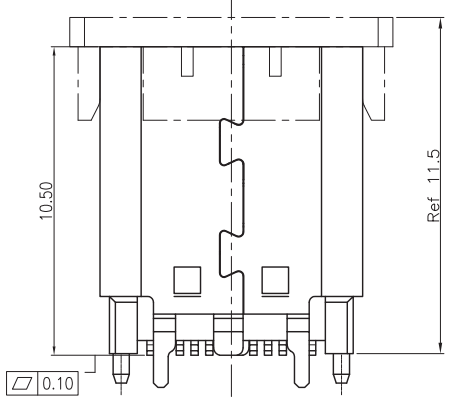
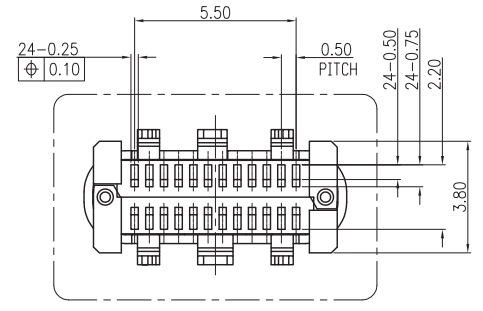
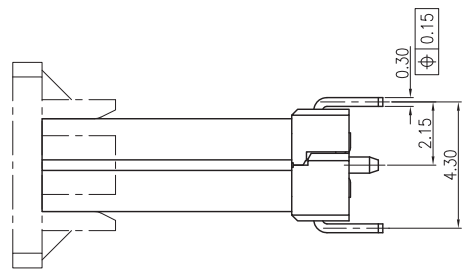
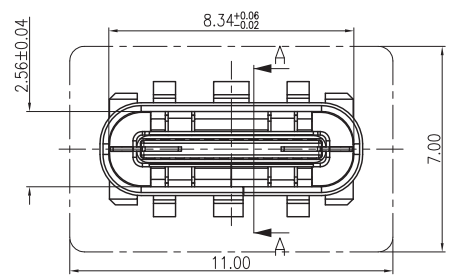


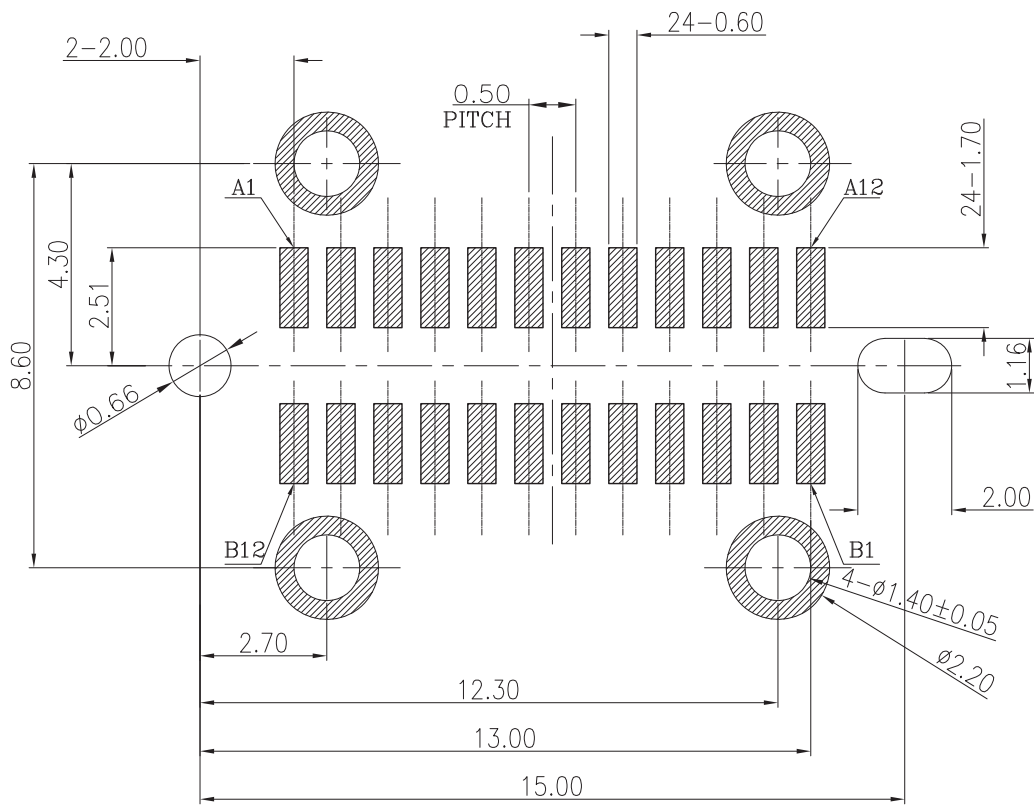
SECTION A-A  
SCALE 1:1



ACS-USB-S0\*DM71F-V1  
 \* = Plating Code:  
 F: Gold Flash  
 K: Au30u"

ITEM	PART NAME	QTY	MATERIAL	REMARK
⑤	TOP CONTACT	1 SET	COPPER ALLOY	50u" MIN. Ni UNDER PLATING. 80u" MIN. MATTE TIN PLATING ON SOLDER AREA.
④	BOTTOM CONTACT	1 SET	COPPER ALLOY	GOLD PLATING ON CONTACT AREA.(SEE PART NUM)
③	SHIELDING PLATE	1 PCS	STAINLESS	50u" MIN. SOLDERABLE Ni PLATING OVERALL.
②	HOUSING	1 PCS	LCP	UL94V-0
①	SHELL	1 PCS	STAINLESS	50u" MIN. SOLDERABLE Ni PLATING OVERALL.

GENERAL TOLERANCE		DRAWN	Ray_Lee	01/14'16	SCALE	PART NO.	ACS-USB-S0*DM71F-V1
X. ±0.30	x. °±1°	CHECKED			N/A	TITLE	USB 3.1 TYPE C REC VERTICAL
.X ±0.25	.x °±0.1°	APPROVED			UNITS	mm	
.XX ±0.20		File NO.			⊕		
.XXX ±0.10		REV.					
SHEET	1/3	Q'TY	1	A	<b>Alternative Component Source</b>		



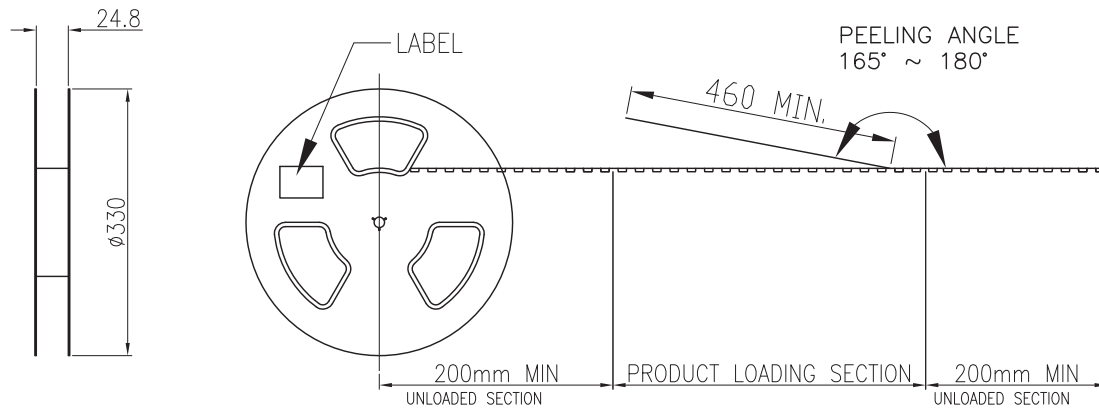
RECOMMENDED P.C.B. LAYOUT (T:1.00mm)  
 TOLERANCE UNSPECIFIED ±0.05mm  
 SCALE: 2:1

NOTES:

1. ELECTRICAL CHARACTERISTICS :
  - 1-1. CONTACT CURRENT RATING:  
5.0 A FOR VBUS PIN AND ITS CORRESPONDING GND PIN.  
0.25 A MIN FOR ALL OTHER CONTACTS.
  - 1-2. CONTACT RESISTANCE: INITIAL 40 mΩ Max.  
AFTER 50 mΩ Max.
  - 1-3. DIELECTRIC WITHSTANDING VOLTAGE : 100 VRMS AC MIN.
  - 1-4. INSULATION RESISTANCE: 100 MEGOHMS MIN.
2. MECHANICAL CHARACTERISTICS:
  - 2-1. CONNECTOR INSERTION FORCE: 5~20N.  
AT A MAXIMUM RATE OF 12.5MM PER SECOND.
  - 2-2. CONNECTOR EXTRACTION FORCE: 8~20N.
  - 2-3. DURABILITY: 10000 CYCLES.
  - 2-4. OPERATING TEMPERATURE: -55°C TO +85°C
3. DIMENSIONS ARE IN MILLIMETERS, BRACKETED DIMENSIONS ARE INCHES EQUIVALENTS.
4. RECOMMENDED PROCESS: IR REFLOW 260°C,3~5SECONDS
5. THE CONNECTOR IS ROHS COMPLIANT.

PIN	SIGNAL NAME	PIN	SIGNAL N
A1	GND	B12	GND
A2	SSTXp1	B11	SSRXp1
A3	SSTXn1	B10	SSRXn1
A4	VBUS	B9	VBUS
A5	CC1	B8	SBU2
A6	Dp1	B7	Dn2
A7	Dn1	B6	Dp2
A8	SBU1	B5	CC2
A9	VBUS	B4	VBUS
A10	SSRXn2	B3	SSTXn2
A11	SSRXp2	B2	SSTXp2
A12	GND	B1	GND

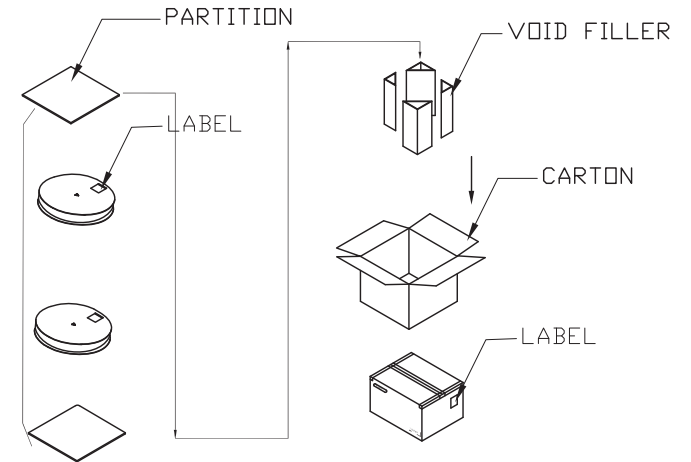
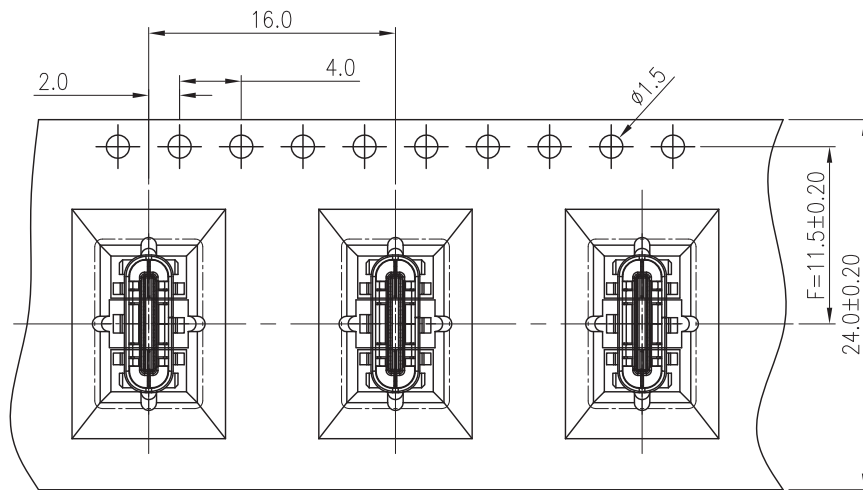
GENERAL TOLERANCE				DRAWN	Ray_Lee	01/14'16	SCALE	PART NO.	ACS-USB-S0*DM71F-V1	
X. ±0.30	x. ° ±1°	CHECKED				N/A	TITLE	USB 3.1 TYPE C REC VERTICAL		
.X ±0.25	.x ° ±0.1°	APPROVED				UNITS	mm			
.XX ±0.20		File NO.								
.XXX ±0.10		REV.								
SHEET	2/3	Q'TY	1	A	<b>Alternative Component Source</b>					



NOTES :

- MATERIAL :  
COVER TAPE : P.S T=0.05mm  
CARRIER TAPE : P.S T=0.40mm  
CARTON: CORRUGATED FIBER
- DIMENSION :  
REEL : SEE DRAWING  
SHIPPING BOX: 350X350X300mm
- QUANTITY : SEE TABLE
- PEELING RESISTANCE : 10gf~130gf (for 12~56mm)
- PEELING SPEED : 300mm/MINUTES

PULL OUT DIRECTION



450	9	4050
PCS/REEL	REEL/BOX	TOTAL Q'TY

GENERAL TOLERANCE		DRAWN	Ray.lee	01/16'16	SCALE	PART NO.	ACS-USB-S0*DM71F-V1
X. ±0.40	x. °±1°	CHECKED			N/A	TITLE	USB 3.1 TYPE C REC VERTICAL
.X ±0.30	.x °±0.1°	APPROVED			UNITS	mm	
.XX ±0.25		File NO.					
.XXX ±0.10		REV.					
SHEET	3/3	Q'TY	1	A	<h2 style="text-align: center;">Alternative Component Source</h2>		