

# ENGL 3000.005

## Introduction to Literary Analysis & Interpretation Skills

Day & Time: MWF 11 am – 11:50 am

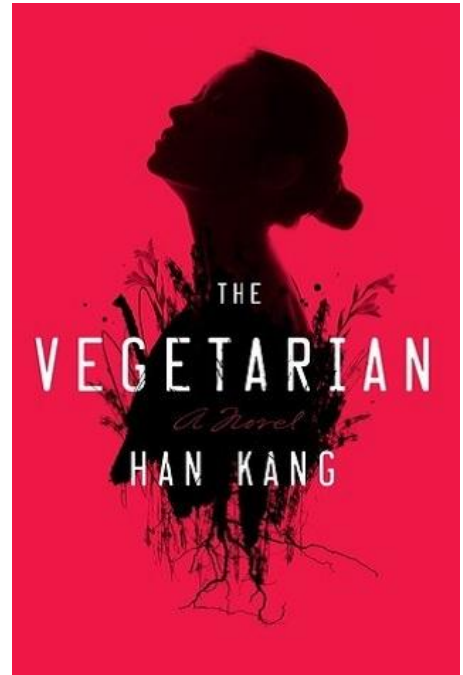
Location: Phys 311

Instructor: Dr. Wonjeong Kim

Email: Wonjeong.Kim@unt.edu

Office Hours: Friday 1 - 3 pm; or by appointment

[What are "Office Hours?"](#)



### Required Text\*

*The Vegetarian* by Han Kang (Author), Deborah Smith (Translator)

ISBN-10: 9781101906118

ISBN-13: 978-1101906118

\*You may purchase or rent your textbook through the UNT Barnes and Noble Bookstore (unt.bncollege.com) or at Voertman's on Hickory St. (940-387-1313). If you buy your textbook from a third-party seller online, be sure you have the correct edition and ISBN.

### Course Description

This course will help students develop, practice, and improve their skills in analyzing and interpreting literary texts. Students will also enhance their critical thinking, reading, and writing abilities through engagement with various genres, including poetry, drama, and narrative. Rather than focusing on finding a "hidden message" in a text, the course will allow students to develop a critical eye to analytically read texts, form their own interpretations, and support their analyses through textual evidence and scholarly resources.

**Require Tasks & Grade Distribution\***

Weekly Quiz	10
Reflections	5
Engagement & Participation	15
Essay 1	20
Essay 2	20
Essay 3	30

**Total** **100**

\*More detailed assignment descriptions will be provided in class or via Canvas.

**Grading Scale**

A 90 -100 % indicates excellent work

B 80 - 89 % indicates good work

C 70 - 79 % indicates satisfactory work

D 60 - 69 % indicates passing work

F 0 - 59 % indicates failing work

Consequently, essays that meet the basic requirements earn a C, not an A or B. If you wish to earn A's and B's, you will have to work harder to produce better than satisfactory, or average, writing. A grade of C or better is required by the university to receive credit for this course.

**Academic Integrity Standards and Consequences**

According to UNT Policy 06.003, Student Academic Integrity, academic dishonesty occurs when students engage in behaviors including, but not limited to:

- Cheating--submitting work that is not your own (This include using generativeAI)
- Fabrication--pretending you are writing about a real interview when you really made it up
- Facilitating academic dishonesty--helping someone else cheat
- Forgery--pretending your work is someone else's
- Plagiarism--using someone else's published work without citing it correctly
- Sabotage--setting someone else up to fail

A finding of academic dishonesty may result in a range of academic penalties or sanctions ranging from admonition to expulsion from the University. I am obligated to report any academic dishonesty. No policy can cover every possible scenario for AI, so when in doubt about whether how you plan to use AI is acceptable or not, contact your instructor immediately.

## Acceptable Student Behavior

Student behavior that interferes with an instructor's ability to conduct a class or other students' opportunity to learn is unacceptable and disruptive and will not be tolerated in any instructional forum at UNT. Students engaging in unacceptable behavior will be directed to leave the classroom and the instructor may refer the student to the Dean of Students to consider whether the student's conduct violated the Code of Student Conduct. The University's expectations for student conduct apply to all instructional forums, including University and electronic classroom, labs, discussion groups, field trips, etc.

The Dean of Students Office (opens in a new window) enforces the Code of Student Conduct (opens in a new window). The Code explains:

- What conduct is prohibited
- The process the DOS uses to review reports of alleged misconduct by students
- The sanctions that can be assigned

When students may have violated the Code, they meet with a representative from the Dean of Students Office to discuss the alleged misconduct in an educational process.

## Safe Zone Statement

The professor considers this classroom to be a place where you will be treated with respect as a human being – regardless of gender, race, ethnicity, national origin, religious affiliation, sexual orientation, political beliefs, age, or ability. Additionally, diversity of thought is appreciated and encouraged, provided you can agree to disagree. It is the professor's expectation that ALL students consider the classroom a safe environment.

## Attendance Policy

In this course you are permitted **five (5) absences with no questions asked**. Please keep in mind that these are only to be used for unforeseen events like illnesses and family emergencies, and it is not for sleeping in. Because I allow you the five absences, please note that you are not given a chance to make up for any in-class work, and if you were to miss any, and you are responsible to contact your peers to catch up on class material. **Any additional absences beyond this will lower your grade by 5% for each**—this will apply whether or not you bring a doctor's note or have family emergencies. **If you have more than nine (9) absences in total, you may receive an F for this course.** Repeated tardiness will also affect your attendance. Coming late twice is equivalent to one absence. In addition to not attending class altogether, the following actions may result in a student being counted as officially absent:

- Coming to class unprepared (didn't read, won't participate in discussions)
- Excessive cell phone use or the use of headphones during class
- Distracting or disruptive behavior or outbursts

## **Late Work Policy**

All assignments should be turned in on the assigned due date. Late work will automatically lose 5% points each day it's late. Work submitted 72 hours after the original deadline will NOT be accepted and will receive a 0 grade, unless you have made prior arrangements with me.

## **Contacting Your Instructor**

Email is the best way to contact me. Please allow at least 24 hours for a response during the week and 48 hours over the weekend. As a university student, you are expected to write formal and professional emails to your instructors and professors. In your emails, you must have a clear subject line, formally address the instructor, and clearly state your purpose. See the following example:

Subject: ENGL 3000 \_Question about [X]

Dear [instructor's name],

My name is [student's name], and I am in your ENGL [Course#/ Section#/Meeting date & time]. I am writing to you in regard to [explain the issue].

Thank you,

[student's name]  
[UNT number]

## **ADA Accommodation**

UNT makes reasonable academic accommodation for students with disabilities. To receive accommodation, follow these steps:

1. Register with the Office of Disability Access (ODA) to verify their eligibility.
2. If a disability is verified, the ODA will provide a student with an accommodation letter to be delivered to faculty to begin a private discussion regarding one's specific course needs.
3. Students may request accommodations at any time; however, ODA notices of accommodation should be provided as early as possible in the semester to avoid any delay in implementation.
4. Students must obtain a new letter of accommodation every semester and must meet with each faculty member prior to implementation in each class. For additional information see the ODA website. You may also contact them by phone at 940.565.4323.

## **Emergency Notification & Procedures**

UNT uses a system called Eagle Alert to quickly provide students with critical information

in the event of an emergency (i.e., severe weather, campus closing, and health and public safety emergencies like chemical spills, fires, or violence). In the event of a university closure, please refer to Canvas for contingency plans for covering course materials.

### **Syllabus and Schedule Changes**

Instructors try to make their syllabi as complete as possible. However, during the course of the semester I may be required to alter, add, or abandon certain policies or assignments. Instructors reserve the right to make such changes as they become necessary. Students will be informed of any major changes in writing.

### **ENGL 3000 Course Schedule**

The following is the weekly schedule for the course. The schedule may change as necessary

#### **Week 1**

8/18 (M): Course Introduction

8/20 (T): "Beat Beat Drum" by Walt Whitman

"My Papa's Waltz" by Theodore Roethke

8/22 (F): Poems by Emily Dickinson

#### **Week 2**

8/25 (M): "The Flowers" by Alice Walker

"Salvation" by Langston Hughes

#### **Quiz 1**

8/27 (W): "Sonny's Blues" by James Baldwin

8/30 (F): "Bartleby, the Scrivener" by Herman Melville

**Reflection 1 due by Saturday 11:59 pm**

#### **Week 3**

9/1 (M): Labor Day - NO CLASS

9/3 (W): "The Tell-Tale Heart" by Edgar Allan Poe

#### **Quiz 2**

9/5 (F): *The Turn of the Screw* by Henry James

**Reflection 2 due by Saturday 11:59 pm**

#### **Week 4**

9/8 (M): *The Turn of the Screw* continued

#### **Quiz 3**

9/10 (W): "How To Stay Friends" by Casey Plett

9/12 (F): "Twenty Hot Tips To Shopping Success" by Casey Plett  
**Reflection 3 due by Saturday 11:59 pm**

Week 5

9/15 (M): Writing about Literature

9/17 (W): Writing about Literature

9/19 (F): Peer Review 1

**Essay 1 due by Saturday 11:59 pm**

Week 6

9/22 (M): "A Rose for Emily" by William Faulkner

**Quiz 4**

9/24 (W): "A Temporary Matter" by Jhumpa Lahiri

9/26 (F): "The Yellow Wallpaper" by Charlotte Perkins Gilman

**Reflection 4 due by Saturday 11:59 pm**

Week 7

9/29 (M): "The Yellow Wallpaper" *continued*

**Quiz 5**

10/1 (W): "Meet the President!" by Zadie Smith

10/3 (F): *The Father* by Florian Zeller

**Reflection 5 due by Saturday 11:59 pm**

Week 8

10/6 (M): *The Father continued*

**Quiz 6**

10/8 (W): *Fences* by August Wilson

10/10 (F): *Fences continued*

**Reflection 6 due by Saturday 11:59 pm**

Week 9

10/13 (M): "Everyday Use" by Alice Walker

**Quiz 7**

10/15 (W): poems by Gwendolyn Brooks

10/17 (F): "Nani" by Alberto Ríos

"My Father in English" by Richard Blanco

**Reflection 7 due by Saturday 11:59 pm**

Week 10

10/20 (M): "How to Tame a Wild Tongue" by Gloria Anzaldúa

10/22 (W): Writing about Literature

10/24 (F): Peer Review 2

**Essay 2 due by Saturday 11:59 pm**

Week 11

10/27 (M): "The Grasshopper and the Bell Cricket" by Yasunari Kawabata

*The Vegetarian* by Han Kang

**Quiz 8**

10/29 (W): *The Vegetarian continued*

10/31 (F): *The Vegetarian continued*

**Reflection 8 due by Saturday 11:59 pm**

Week 12

11/3 (M): *Sula* by Toni Morrison

**Quiz 9**

11/5 (W): *Sula continued*

11/7 (F): *Sula continued*

**Reflection 9 due by Saturday 11:59 pm**

Week 13

11/10 (M): Workshop

**Quiz 10**

11/12 (W): Workshop

11/14 (F): Workshop

**Reflection 10 due by Saturday 11:59 pm**

Week 14

11/17 (M): Workshop

11/19 (W): Workshop

11/21 (F): Workshop

Week 15

Thanksgiving Break - *NO CLASS*

Week 16

12/1 (M): Workshop

12/3 (W): Workshop

12/5 (F): Reading Day - *NO CLASS*

**Essay 3 due by Saturday, Dec. 6, 11:59 pm**