



University of North Texas
College of Merchandising, Hospitality, and Tourism
Department of Hospitality and Tourism Management
HMGT 1450 Principles of Nutrition (3 credit hours)

Instructor Information

Priscilla Connors PhD, RDN, Associate Professor
Communicate with me via email at priscilla.connors@unt.edu
Emails are routinely answered during regular business hours M-F

Getting in Touch: Post general questions on the [Ask Your Questions!](#) Discussion board. If you have questions about the course or assignments, please post them there. Either one of your classmates or I will answer it. This way we can all benefit from questions asked, and they can be answered in a venue that the whole class can see. If you have a private question, contact via email Priscilla.Connors@unt.edu and I will respond within 24 hours on weekdays. Normally, all assignments are graded within 1 week of due date. If I am unable to grade that quickly I will let everyone know when to expect to see their scores.

Course Description

This course is an introduction to human nutrition in health from an examination of nutrients and body function to food choice and healthful eating behaviors. Energy needs are calculated, nutrient information is analyzed, and national food and nutrition reports are reviewed. The connection between nutrition and risk of chronic disease is described with nutrition practices that promote health emphasized. The food environment is examined from the perspective of making informed food choices in a complex marketplace. This 3 credit-hour course satisfies the Component 1 of the University Core Curriculum.

Department of Hospitality & Tourism Management Program Learning Outcomes (PLO)

Upon graduating with a BS in Hospitality Management, students will be able to:

1. Demonstrate basic knowledge of theoretical constructs pertaining to the hospitality and tourism industries
2. Apply the basic principles of critical thinking and problem solving when examining hospitality and tourism management issues
3. Apply technical aspects of the hospitality and tourism industry
4. Demonstrate professional demeanor, attitude, and leadership needed for managerial positions in the hospitality industry

Course Objectives and Learning Outcomes

- LO 1: Analyze the context of nutrition recommendations & personal choices
- LO 2: Examine the nutrients and describe their metabolic function
- LO 3: Relate nutritional status to disease risk & outcomes of eating patterns
- LO 4: Illustrate healthy, economical & socially responsible food choices

Prerequisites

There are no required formal prerequisites for this course. Be curious, see applications of what you have learned, and become an informed consumer in our food marketplace.

Textbook

There is NO required textbook! All the readings and materials that you need are available in your Canvas class. You do not need to purchase a text or any materials to be successful.

Assessments

All nutrient unit quizzes are open and available on the first day of class. Subsequently each set of unit quizzes closes in a cascading fashion with Unit 1 Food Safety & Security quizzes closing first followed by Unit 2 Nutrition Recommendations and so forth through all the units. Quizzes open at 12:01 am and close at 11:59 pm. You have two opportunities to take a quiz with only the highest score recorded in Grades. Once quizzes close, they are not reopened! Discussion Quizzes and Posts open for a specific number of days as are News Literacy quizzes. Review your Canvas Calendar to keep up to date on when assignments are due.

Late Policy

Once quizzes close, they are not reopened! You have two opportunities to take a quiz with only the highest score recorded in Grades. Discussions are open for a set period and are not re-opened. If you miss any class activity contact me within 24 hours at Priscilla.Connors@unt.edu to discuss alternative assignments.

Turn Around Time, Grade Questions

I aim to return graded work to you within a few days of the due date. When this is not possible, I will send an announcement to the class. I am happy to review any work that you feel was incorrectly graded. I often learn useful information about both the design of the class and the effectiveness of the assessments through conversations with students. My goal is that each student successfully completes the course and discussions about grades are determined is a part of how we achieve that goal together.

Grading

Assignment groups like Discussions or Modules are weighted in CANVAS GRADES. Your final grade (a percentage) is based upon the distribution of weight (or percent out 100%) assigned to each assignment group and your scores on assessments in that group. Check SYLLABUS in Canvas to see the percentage for each assignment group.

Table 1 Assignment Group with Weights Fall 2021

Due Dates	Assignment Group	Weight (%)
Varies	Discussions posts and quizzes	9.7%
Varies	Module Units 1-10 quizzes	67.8%
Varies	Exams 1-3	9.7%
Varies	News Literacy quizzes	12.8%
TOTAL		100.0%

Table 2 Modules 1-10 Unit Quizzes with Points

Due Date	MODULE QUIZZES	Points
Sept 1	Unit 1 Food Safety & Security	30
Sept 8	Unit 2 Nutrition Recommendations	20
Sept 15	Unit 3 Digestion & Absorption	20
Sept 29	Unit 4 Carbohydrate	25
Oct 6	Unit 5 Lipid	20
Oct 13	Unit 6 Protein	20
Oct 25	Unit 7 Vitamin	25
Nov 3	Unit 8 Mineral	15
Nov 10	Unit 9 Water	15
Nov 17	Unit 10 Nutrition in Health	20

Table 3 Discussion Quizzes and Posts

Due Date	DISCUSSION QUIZZES & POSTS	Points
Nov 8	Discussion Quiz 1 Netiquette	5
Nov 8	Discussion Quiz 2 Think Piece	5
Nov 15	Think Piece 1 Too Much Sugar?	10
Nov 22	Think Piece 2 Does Food Waste Matter?	10

Table 4 News Literacy Quizzes

Due Date	MODULE QUIZZES	Points
Sept 13	NL Quiz 1 Introduction	5
Sept 20	NL Quiz 2 Lateral Reading	5
Sept 27	NL Quiz 3 Lateral Reading	5
Oct 4	NL Quiz 4 Lateral Reading	5
Oct 11	NL Quiz 5 Lateral vs Vertical Reading	5
Oct 18	NL Quiz 6 Lateral vs Vertical Reading	5
Oct 27	NL Quiz 7 Evaluating Evidence	5
Nov 1	NL Quiz 8 Evaluating Evidence	5

Table 5 Exams

Due Date	EXAMS	Points
Sept 23	Exam 1 (Units 1-3)	10
Oct 21	Exam 2 (Units 4-6)	10
Dec 8	Exam 3 (Units 7-10)	10

Technical Requirements

Internet access

Computer or mobile device

Check the Student Toolkit in our Canvas class for details

UIT Help Desk: [UIT Student Help Desk site](http://www.unt.edu/helpdesk/index.htm) (<http://www.unt.edu/helpdesk/index.htm>)Email: helpdesk@unt.edu

Phone: 940-565-2324

In Person: Sage Hall, Room 130

Walk-In Availability: 8am-9pm

Laptop Checkout: 8am-7pm

Telephone Availability:

- Sunday: noon-midnight
- Monday-Thursday: 8am-midnight
- Friday: 8am-8pm
- Saturday: 9am-5pm

For additional support, visit [Canvas Technical Help](https://community.canvaslms.com/docs/DOC-10554-4212710328) (<https://community.canvaslms.com/docs/DOC-10554-4212710328>)

Rules of Engagement

Rules of engagement refer to the way students are expected to interact with each other and with their instructors. Here are some general guidelines:

- While the freedom to express yourself is a fundamental human right, any communication that utilizes cruel and derogatory language on the basis of race, color, national origin, religion, sex, sexual orientation, gender identity, gender expression, age, disability, genetic information, veteran status, or any other characteristic protected under applicable federal or state law will not be tolerated.
- Treat your instructor and classmates with respect in any communication online or face-to-face, even when their opinion differs from your own.
- Ask for and use the correct name and pronouns for your instructor and classmates.
- Speak from personal experiences. Use “I” statements to share thoughts and feelings. Try not to speak on behalf of groups or other individual’s experiences.
- Use your critical thinking skills to challenge other people’s ideas, instead of attacking individuals.
- Avoid using all caps while communicating digitally. This may be interpreted as “YELLING!”
- Be cautious when using humor or sarcasm in emails or discussion posts as tone can be difficult to interpret digitally.
- Avoid using “text-talk” unless explicitly permitted by your instructor.
- Proofread and fact-check your sources.
- Keep in mind that online posts can be permanent, so think first before you type.

See these [Engagement Guidelines](https://clear.unt.edu/online-communication-tips) (https://clear.unt.edu/online-communication-tips) for more information.

Course Evaluation

Student Perceptions of Teaching (SPOT) is the student evaluation system for UNT and allows students the ability to confidentially provide constructive feedback to their instructor and department to improve the quality of student experiences in the course.

College of Merchandising, Hospitality & Tourism
Syllabus Statements
Fall, 2021

COVID-19

Official Information: As the situation with the virus continues to evolve, students are required to keep abreast of guidelines via official communication (usually via email) from UNT official announcements.

Face Coverings

UNT encourages everyone to wear a face covering when indoors, regardless of vaccination status, to protect yourself and others from COVID infection, as recommended by current CDC guidelines. Face covering guidelines could change based on community health conditions.

Vaccinations: If you are not vaccinated, [you are urged to get vaccinated](#) as soon as possible to protect yourself, your friends and family, and our campus. Vaccines reduce the chance of experiencing severe impacts and minimize transmission.

Mandatory testing: All students, faculty and staff will be [required to have a COVID-19 test](#) at designated intervals throughout the semester, beginning with the first testing interval Aug. 16-Sept. 10. Vaccinated individuals can opt out by uploading vaccination proof by Sept. 10. (If you've already uploaded your vaccine information for the [incentive program](#), you'll receive an email asking you for permission to use that proof to opt out of testing.) If you contracted COVID-19 in the last 90 days, you can opt out until the 90 days expires by uploading your positive test result.

Mandatory self-reporting: Students, faculty and staff will continue to be required to report symptoms and exposure to COVID@unt.edu, quarantine as necessary and cooperate with UNT's contact tracing team.

Disciplinary actions for noncompliance: Students who fail to comply will go through the [Student Conduct Process](#).

Attendance

Students are expected to attend class meetings regularly and to abide by the attendance policy established for the course. It is important that you communicate with the professor and the instructional team prior to being absent, so you, the professor, and the instructional team can discuss and mitigate the impact of the absence on your attainment of course learning goals. Please inform the professor and instructional team if you are unable to attend class meetings because you are ill, in mindfulness of the health and safety of everyone in our community.

If you are experiencing any [symptoms of COVID-19](https://www.cdc.gov/coronavirus/2019-ncov/symptoms-testing/symptoms.html) (<https://www.cdc.gov/coronavirus/2019-ncov/symptoms-testing/symptoms.html>) please seek medical attention from the Student Health and Wellness Center (940-565-2333 or askSHWC@unt.edu) or your health care provider PRIOR to coming to campus. UNT also requires you to contact the UNT COVID Team at COVID@unt.edu for guidance on actions to take due to symptoms, pending or positive test results, or potential exposure.

Course Materials for Remote Instruction

Remote instruction may be necessary if community health conditions change or you need to self-isolate or quarantine due to COVID-19. Students will need access to a webcam and microphone, and any other materials deemed essential by your faculty for specific courses, to participate in fully remote portions of the class. Information on how to be successful in a remote learning environment can be found at <https://online.unt.edu/learn>

Advising and Degree Progression

Advising

ALL students are expected to meet with their Academic Advisor **each semester** to update your degree plan and to stay on track for a timely graduation.

- **Advising Contact Information (Chilton Hall 385 – 940.565.4635)**
- **SCHEDULE APPOINTMENTS HERE: appointments.unt.edu**

Prerequisites

- Ultimately, it is a student's responsibility to ensure they have met all prerequisites before enrolling in a class.
- A prerequisite is a course or other preparation that must be successfully completed (a grade of C or better) before enrollment in another course. All prerequisites are included in catalog course descriptions.
- Students that lack prerequisites for a course are not allowed to remain in the course.

Transfer Courses

Any transfer course(s) from another institution must receive *prior approval* from your CMHT Academic Advisor to ensure that the course(s) will be applicable to your degree plan at UNT.

Dropped for Non-payment

- Students will be dropped for nonpayment for enrolled courses, parking fees, schedule change fees, etc. Please check your account daily through the 12th class day to ensure you have not been dropped for non-payment of any amount. It is the student's responsibility to make all payments on time.
- ***Students cannot be reinstated for any reason after the 12th class day regardless of situation.***

Dropping a Course

- **A decision to drop a course may affect your current and future financial aid eligibility.** Talk to your academic advisor or Student Financial Aid if you are thinking about dropping a course.
- Speak with the course instructor to discuss any possible options to be successful in the course before dropping.
- Meeting deadlines for dropping a course are the student's responsibility.
- **There are different procedures for dropping a class depending on the time of semester.** Please see the instructions for dropping a class here:
<https://registrar.unt.edu/registration/dropping-class>

Financial Aid Requirements

- A student must maintain Satisfactory Academic Progress (SAP) to continue receiving financial aid by maintaining a minimum 2.0 cumulative GPA and successfully completing the required number of credit hours based on total registered hours per semester. Students cannot exceed attempted credit hours above 150% of their required degree plan. If a student does not maintain the required standards, the student may lose financial aid eligibility. Visit <https://financialaid.unt.edu/sap> for more information about financial aid Satisfactory Academic Progress.

What if You Are In Distress?

The University has a number of resources that can be useful if you find yourself in need of help. Faculty and advisors can help direct you to resources; please note that any reports of sexual harassment, sexual assault, dating violence, or stalking must be reported to the UNT Dean of Students, per Texas law. Some resources you might consult are:

UNT Police	940-565-3000
Dean of Students	940-565-2648 or 940-565-2039
Counseling and Testing	940-565-2741
Student Health and Wellness Center	940-565-2333
Office of Disability Access	940-565-2333
Housing and Residence Life	940-565-2610
Substance Use and Resource Education Center	940-565-3177
Veterans Center	940-369-8021
Denton County Friends of the Family	940-387-5131
National Suicide Hotline	1-800-273-TALK

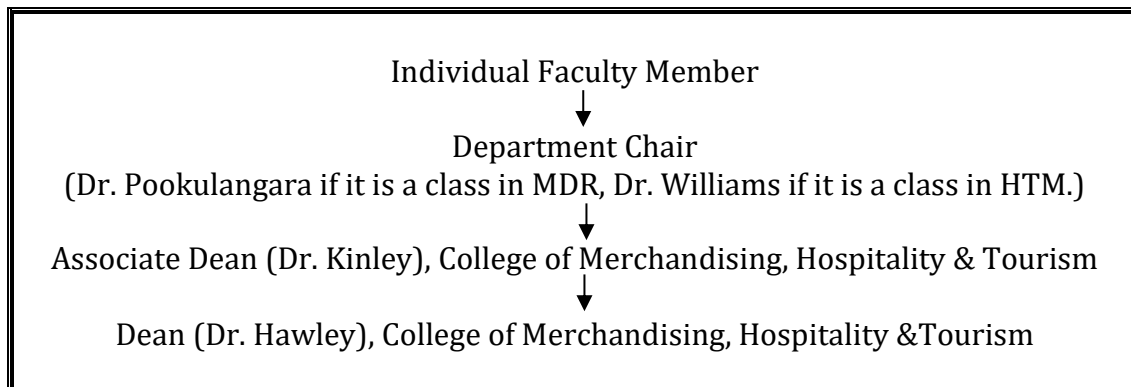
Dates and Deadlines

August 23	First day of class
August 27	Last day to add a class.
September 4	Census date –Students cannot be added to a course for any reason after this date.
September 6	Labor Day – No Classes – University is Closed
November 12	Last day for a student to drop a course and receive a W. Also last day to withdraw from the semester.
November 25-26	Thanksgiving Break – No Classes – University is Closed
December 1-2	Pre-final days
December 2	Last regular class day
December 3	Reading day (no classes)
December 4-10	Final exams (Exams begin on Saturday) For your specific final exams, see this website: https://registrar.unt.edu/exams/final-exam-schedule

Grade and Class Concerns

Do you know who to contact for a course-related issue?

Understanding the academic organizational structure is important when resolving class-related or advising issues. When you need problems resolved, please follow the steps outlined below:



Do you require special accommodations?

The University of North Texas and the College of Merchandising, Hospitality and Tourism make reasonable academic accommodation for students with disabilities. Students seeking accommodation must first register with the Office of Disability Accommodation (ODA) to verify their eligibility. If a disability is verified, the ODA will provide you with an accommodation letter to be delivered to faculty to begin a private discussion regarding your specific needs in a course. ODA notices of accommodation should be provided as early

as possible in the semester to avoid any delay in implementation. Note that students must obtain a new letter of accommodation for every semester and must meet with each faculty member prior to implementation in each class. Students are strongly encouraged to deliver letters of accommodation during faculty office hours or by appointment. Faculty members have the authority to ask students to discuss such letters during their designated office hours to protect the privacy of the student. For additional information see the Office of Disability Accommodation website at <http://www.unt.edu/oda>. You may also contact them by phone at 940.565.4323.

Are you aware of safety regulations?

Students are urged to use proper safety procedures and guidelines. In lab sessions, students are expected and required to identify and use property safety guidelines in all activities requiring lifting, climbing, walking on slippery surfaces, using equipment and tools, handling chemical solutions and hot and cold products. Students should be aware that the University of North Texas is not liable for injuries incurred while students are participating in class activities. All students are encouraged to secure adequate insurance coverage in the event of accidental injury. Students who do not have insurance coverage should consider obtaining Student Health Insurance for this insurance program. Brochures for this insurance are available in the UNT Health and Wellness Center on campus. Students who are injured during class activities may seek medical attention at the UNT Health and Wellness Center at rates that are reduced compared to other medical facilities. If you have an insurance plan other than Student Health Insurance at UNT, please be sure that your plan covers treatment at this facility. If you choose not to go to the UNT Health and Wellness Center, you may be transported to an emergency room at a local hospital. You are responsible for expenses incurred there.

Do you know the Academic Integrity Policy?

Academic Integrity Standards and Consequences, UNT Policy 06.003.

Academic dishonesty occurs when students engage in behaviors including, but not limited to cheating, fabrication, facilitating academic dishonesty, forgery, plagiarism, and sabotage. A finding of academic dishonesty may result in a range of academic penalties or sanctions ranging from admonition to expulsion from the University.

Academic dishonesty includes, but is not limited to, the use of any unauthorized assistance in taking quizzes, tests, or exams; dependence upon the aid of sources beyond those authorized by the instructor, the acquisition of tests or other material belonging to a faculty member, dual submission of a paper or project, resubmission of a paper or project to a different class without express permission from the instructors, or any other act designed to give a student an unfair advantage. Plagiarism includes the paraphrase or direct quotation of published or unpublished works *without* full and clear acknowledgment of the author/source. Academic dishonesty will bring about disciplinary action which may include expulsion from the university. This is explained in the UNT Student Handbook. Your teacher should have a syllabus policy describing penalties for academic dishonesty.

Your instructor may decide to record lectures and/or class content for students enrolled in this class section to refer to throughout the semester. **Class recordings are the intellectual property of the university or instructor and are reserved for use only by students in this class and only for educational purposes. Students may not post or otherwise share the recordings outside the class, or outside the Canvas Learning Management System, in any form. Failing to follow this restriction is a violation of the UNT Code of Student Conduct and could lead to disciplinary action.**

Do you meet ALL expectations for being enrolled in a course?

- CMHT students are expected to meet all prerequisites for the courses in which they are registered.
- Student are expected to be respectful of other students, guests, and faculty. Behavior that interferes with an instructor's ability to conduct a class or other students' opportunity to learn is unacceptable and disruptive and will not be tolerated in any instructional forum at UNT.
- Students engaging in unacceptable behavior will be directed to leave the classroom and may be referred to the Dean of Students for possible violation of the Code of Student Conduct.
- UNTs expectations for student conduct apply to all instructional forums, including university and electronic classroom, labs, discussion groups, field trips, etc. The Code of Student Conduct can be found at www.deanofstudents.unt.edu.

The College of Merchandising, Hospitality and Tourism requires that students respect and maintain all university property. Students are accountable through disciplinary action for any intentional damages they cause in classrooms. (e.g., writing on tables). Disruptive behavior is not tolerated (e.g., arriving late, leaving early, sleeping, talking on the phone, texting or game playing, making inappropriate comments, ringing cellular phones/beepers, dressing inappropriately).

Feedback and Communications

Image Release

The College actively posts images and descriptions of class and student accomplishments. If you do not want your image posted on the CMHT website and/or social media sites, (1) you should avoid being in group photographs or in photographs taken by your teachers or the IT staff and (2) send an email to TKinley@unt.edu and request that your name and image not be shared. Dr. Kinley will share this information with the IT staff and the faculty who post to social media. Faculty and staff are asked to honor your wishes without question.

If your instructor employs lecture capture technology to record class sessions, students may occasionally appear on video. The recording may be used in future course offerings.

What is SPOT?

The Student Perceptions of Teaching (SPOT) is a requirement for all organized classes at UNT. This short survey at the end of the semester gives students the opportunity to comment on the course. Student feedback is important and is essential as we strive for excellence.

Do you know the date/time of the final exam in this course?

Final exams or other appropriate end of semester evaluations are administered at the designated times during the final week of each long semester and during the specified day of each summer term. *Please check the calendar early in the semester to avoid any schedule conflicts.* You can find the Final Exam Schedule here:

<https://registrar.unt.edu/exams/final-exam-schedule>

Do you know what you may be missing?

Your access point for ALL business and academic services at UNT occurs within the <https://my.unt.edu> site, and EagleConnect is the official method of communication for UNT. If you do not regularly check EagleConnect or forward it to your favorite e-mail account, please do so to learn about job and internship opportunities, CMHT events, scholarships, and other important information. The website that explains EagleConnect and how to forward your email is: <https://it.unt.edu/eagleconnect>.

Do you know what to do in an emergency or UNT closure?

- UNT uses a system called Eagle Alert to quickly notify you with critical information in an event of emergency (i.e., severe weather, campus closing, and health and public safety emergencies like chemical spills, fires, or violence). The system sends voice messages (and text messages upon permission) to the phones of all active faculty staff, and students. Please make certain to update your phone numbers at <https://my.unt.edu>.
- Some helpful emergency preparedness actions include: 1) ensuring you know the evacuation routes and severe weather shelter areas, determining how you will contact family and friends if phones are temporarily unavailable, and identifying where you will go if you need to evacuate the Denton area suddenly.
- In the event of a university closure, your instructor will communicate with you through Canvas regarding assignments, exams, field trips, and other items that may be impacted by the closure.

Sexual Assault Prevention

UNT is committed to providing a safe learning environment free of all forms of sexual misconduct, including sexual harassment sexual assault, domestic violence, dating violence, and stalking. Federal laws (Title IX and the Violence Against Women Act) and UNT policies prohibit discrimination on the basis of sex, and therefore prohibit sexual misconduct. If you or someone you know is experiencing sexual harassment, relationship violence, stalking, and/or sexual assault, there are campus resources available to provide support and

assistance. UNT's Survivor Advocates can assist a student who has been impacted by violence by filing protective orders, completing crime victim's compensation applications, contacting professors for absences related to an assault, working with housing to facilitate a room change where appropriate, and connecting students to other resources available both on and off campus. The Survivor Advocates can be reached at SurvivorAdvocate@unt.edu or by calling the Dean of Students Office at 940-565- 2648. Additionally, alleged sexual misconduct can be non-confidentially reported to the Title IX Coordinator at oeo@unt.edu or at (940) 565 2759.

Prohibition of Discrimination, Harassment, and Retaliation (Policy 16.004)

The University of North Texas (UNT) prohibits discrimination and harassment because of race, color, national origin, religion, sex, sexual orientation, gender identity, gender expression, age, disability, genetic information, veteran status, or any other characteristic protected under applicable federal or state law in its application and admission processes; educational programs and activities; employment policies, procedures, and processes; and university facilities. The University takes active measures to prevent such conduct and investigates and takes remedial action when appropriate.

Retention of Student Records

Student records pertaining to this course are maintained in a secure location by the instructor of record. All records such as exams, answer sheets (with keys), and written papers submitted during the duration of the course are kept for at least one calendar year after course completion. Course work completed via the Canvas online system, including grading information and comments, is also stored in a safe electronic environment for one year. Students have the right to view their individual record; however, information about student's records will not be divulged to other individuals without proper written consent. Students are encouraged to review the Public Information Policy and the Family Educational Rights and Privacy Act (FERPA) laws and the University's policy. See UNT Policy 10.10, Records Management and Retention for additional information.

Career Resources

Resume Help

For one-on-one help with your resume or other job-search skills, Ms. Janice Lader (Janice.Lader@unt.edu) is our Career Center advisor. Contact her for an appointment or drop by her office in Chilton 3.

Career Center

The Career Center is currently located in Sage Hall. They provide *free* help with resumes, interview skills, business cards, professional portraits, etc. They also host several recruiters throughout the year and host job fairs. Learn more about their services here: <https://careercenter.unt.edu/>.

Internship / Career Industry Contact Opportunities

- In the fall semester, watch for information about the **Global Discussions and Executive in Residence (EIR) Lecture**. These are opportunities to hear about innovative industries and network with CMHT Board members and speakers.
- The **CMHT Career Expo**, which provides opportunities to talk with recruiters and maybe schedule an interview on the spot!
- In the spring semester, watch for information about the **Consumer Experience Symposium**. The format will be similar to the EIR in that it affords you an opportunity to hear directly from industry and network with Board members and speakers.
- **CMHT Student organizations** bring industry opportunities to campus in their monthly or bi-monthly meetings. Join them and participate!
- We sometimes have an **Industry Partner of the Day** set up in the hallway near the advising offices when we are on campus, and available via Zoom when we are not. These events may be publicized in your classes and on the CMHT social media sites.

Online Job Board and Social Media Sites

- <https://cmht.unt.edu/jobs>
- Facebook CMHT Careers Group - <https://www.facebook.com/groups/CMHTCareers/>
- LinkedIn - <https://www.linkedin.com/in/unt-cmht-2023b8173/>
- Twitter - @UNTCMHT
- Facebook Social Sites - @UNTCMHT and @UNTHTM
- Instagram - @untcmht

CMHT-IT Resources

CMHT-IT Services Student Laptop Checkout Information

The CMHT-IT Services desk located on the 3rd floor of Chilton Hall outside room **386** will have Dell laptops available for checkout for all UNT students. These laptops and the CMHT-IT Services desk will be available during the following hours:

Monday: 8:00AM – 9:00PM
Tuesday: 8:00AM – 9:00PM
Wednesday: 8:00AM – 9:00PM
Thursday: 8:00AM – 9:00PM
Friday: 8:00AM – 1:00PM

These Dell laptops can be checked out at any point during the above hours and must be returned on the same business day to the CMHT-IT Services personnel. These laptops must remain on campus and will **not** save your data. So be sure to use a USB or email yourself to save your work!

For more information, please stop by the CMHT-IT Services desk in Chilton Hall 386 or visit us on Zoom helpdesk at unt.zoom.us/j/268838628 or give us a call at (940) 565-4227.

CMHT Virtual Lab

UNT Students currently enrolled in a CMHT course have access to the CMHT Virtual Lab provided by VMware Horizon View virtual desktop system. This is useful if your course requires specific software and you need access to the software on your personal machine. You can find more information and installation steps here: <https://cmht.unt.edu/vmware-virtual-lab>.

The CMHT-IT Services desk can assist you with installing the VMware client on your personal machine. Please see above hours of operation for our IT services desk.

UNT IT Resources

Part of working in the online environment involves dealing with the inconveniences and frustration that can arise when technology breaks down or does not perform as expected. Here at UNT we have a Student Help Desk that you can contact for help with Canvas or other technology issues.

UIT Help Desk: [UIT Student Help Desk site](http://www.unt.edu/helpdesk/index.htm) (<http://www.unt.edu/helpdesk/index.htm>)

Email: helpdesk@unt.edu

Phone: 940-565-2324

In Person: Sage Hall, Room 130

Walk-In Availability: 8am-9pm

Telephone Availability:

- Sunday: noon-midnight
- Monday-Thursday: 8am-midnight
- Friday: 8am-8pm
- Saturday: 9am-5pm

Laptop Checkout: 8am-7pm

For additional support, visit [Canvas Technical Help](https://community.canvaslms.com/docs/DOC-10554-4212710328) (<https://community.canvaslms.com/docs/DOC-10554-4212710328>)

Additional Information**Are You An F-1 Visa Holder?**

To read detailed Immigration and Customs Enforcement regulations for F-1 students taking online courses, please go to the [Electronic Code of Federal Regulations website](http://www.ecfr.gov/) (<http://www.ecfr.gov/>). The specific portion concerning distance education courses is located at Title 8 CFR 214.2 Paragraph (f)(6)(i)(G).

The paragraph reads:

(G) For F-1 students enrolled in classes for credit or classroom hours, no more than the equivalent of one class or three credits per session, term, semester, trimester, or quarter may be counted toward the full course of study requirement if the class is taken on-line or through distance education and does not require the student's physical attendance for classes, examination or other purposes integral to completion of the class. An on-line or distance education course is a course that is offered principally through the use of television, audio, or computer transmission including open broadcast, closed circuit, cable, microwave, or satellite, audio conferencing, or computer conferencing. If the F-1 student's course of study is in a language study program, no on-line or distance education classes may be considered to count toward a student's full course of study requirement.

University of North Texas Compliance

To comply with immigration regulations, an F-1 visa holder within the United States may need to engage in an on-campus experiential component for this course. This component (which must be approved in advance by the instructor) can include activities such as taking an on-campus exam, participating in an on-campus lecture or lab activity, or other on-campus experience integral to the completion of this course.

If such an on-campus activity is required, it is the student's responsibility to do the following:

- (1) Submit a written request to the instructor for an on-campus experiential component within one week of the start of the course.
- (2) Ensure that the activity on campus takes place and the instructor documents it in writing with a notice sent to the International Student and Scholar Services Office. ISSS has a form available that you may use for this purpose.

Because the decision may have serious immigration consequences, if an F-1 student is unsure about his or her need to participate in an on-campus experiential component for this course, s/he should contact the UNT International Student and Scholar Services Office (telephone 940-565-2195 or email internationaladvising@unt.edu) to get clarification before the one-week deadline.