



ASTU 2201-503 / Spring 2026
Beginning Drawing and Painting: Painting I
University of North Texas

Instructor: Elaine Pawlowicz (she, hers, her)

Office Location: Room 306 CVAD

Office Hours: 2:30p.m.-4:30p.m. Mondays or by zoom appointment

Email: Elaine.Pawlowicz@unt.edu

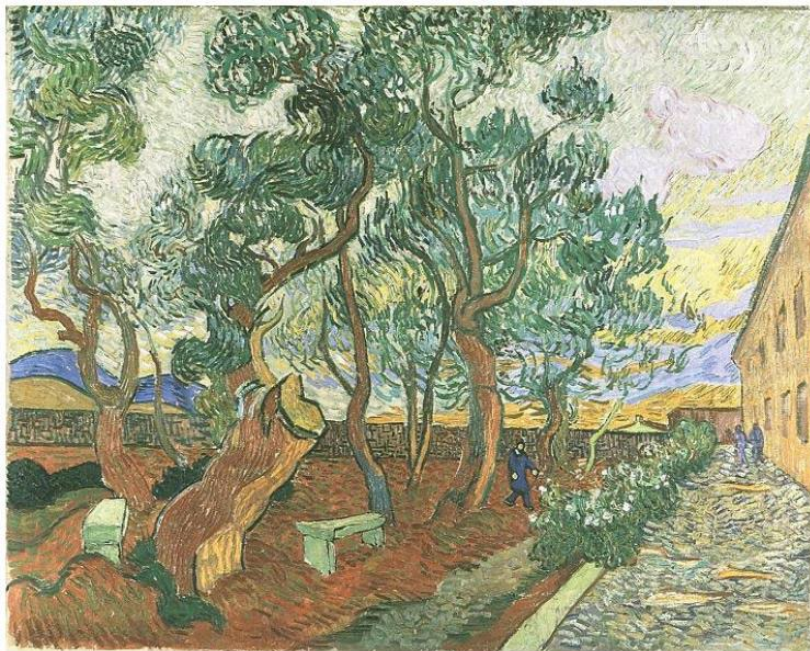
Class Location: Room 460 CVAD

Class Times: Monday and Wednesday 11:00-1:50p.m.

Term: Spring 2026

Studio Art Office Phone Number: 940-369-7671

“Great things are done by a series of small things brought together”
Vincent Van Gogh



Vincent Van Gogh, *Garden of St. Paul Hospital*, 1889

Art Building Hours

Regular Hours

- Monday–Thursday: 7 a.m.–10 p.m.
- Friday: 7 a.m.–5 p.m.
- Saturday: 9 a.m.–5 p.m.
- Sunday: Noon–10 p.m.
- Hours may change

4th Floor Woodshop

9-5pm M-Friday

* hours may change

COURSE DESCRIPTION

ASTU 2201 Painting I

2201(ARTS 2316). Beginning Drawing and Painting: Painting I. 3 credit hours. Introduction to painting practices and issues, including the study of methods and materials (oil, acrylic, tools, building of supports and surfaces), composition, value, color, and pictorial space centered on observation. Course work focuses on the capacities of painting and introduces students to technical and historical issues central to painting.

**Prerequisite(s): Must pass with a C or better: ART 1600 and ART 1700 or ART 1800.

Objectives	Outcomes
Exposure to a variety of painting processes and painters. Learn basic knowledge of painting traditions, conventions, and evolutions.	Place works in the historical, contemporary, cultural and stylistic contexts in painting
Primary focus on observational painting and possibly including some interpretive methodologies in painting	Create artwork that demonstrates perceptual acuity, conceptual understanding, expressive possibilities and technical skill
Exploring composition by utilizing a sketchbook and preliminary drawings	Begin the painting process having confidence in a visual manifestation that communicates strong aesthetic concepts and meanings.
Learn studio guidelines, inventory materials, use safety standards around chemicals and properly dispose of waste.	Construct clean and safe professional studio setting
Prepare Canvas and Supports	Learn to create archival surfaces for painting
Learn the basics of both acrylic and oil painting processes including the use of a variety of brushes, tools, surfaces and mediums	Have a working knowledge of materials and techniques in painting
Develop facility for color mixing: hue, value, chroma and temperature (warm and cool) along with additional color concepts such as monochromatic, analogous, complementary and triad schemes. Investigate terms such as local color, expressive color, flat space vs. atmospheric space, opacity, translucency, glazing and scumbling. Exposure to a variety of limited palettes sharing necessary logic behind full chromatic palette including the systematic creation of a color palette.	Understand basic principles of color and design and apply them to a specific aesthetic intent
Analyze and evaluate works of art using disciplinary vocabulary.	Participate in critiques of own work and work of others
Be able to create a painting from original concept to completion.	Develop basic ability to synthesize the use of drawing, two-dimensional design, color and painting and begin to develop a consistent, personal direction and style
Learn to properly document artwork. Awareness of UNT photo documentation services along with discussion of lighting, basic uses of Photoshop, cropping and resampling images, file naming and understanding requirements for digital images for artist exhibitions.	Know how to format images to apply for online Portfolio Reviews, exhibitions and competitions.

COURSE CONTENT & SCHEDULE CHANGES

The subjects are chosen to cover a broad spectrum of experiences for the Beginning student. Learning to see, working from observation and discovering composition, proportion and space are practiced. Historical and contemporary models are examined regularly. The use of color to create form is explored. Demonstrations provided when necessary. The course schedule is subject to change in content and scope at the Course Instructor's discretion.

COURSE REQUIREMENTS

Each student will accomplish at least 5 paintings (4 projects) in this course. Mandatory participation in critiques is crucial. Work will not be critiqued if it is not finished resulting in failure. Project grades may be reconsidered if the student desires to continue to improve the work. The original grade is averaged with the second attempt. If a student does not attend the final critique day, a letter grade course reduction will result. Students who arrive late to critiques or leave early will receive a letter grade deduction from their project grade. All students must have materials ready to work in class for each assignment. Students are highly recommended to attend museum and gallery exhibitions along with artist lectures in Dallas, Fort Worth and Denton. Students will be required to show preliminary drawing and research in their sketchbooks. Critique questions will be prepared by all students, and participation will be calculated into project grade.

ASSIGNMENT & ASSESSMENTS *

Project 1 and Critique 1 (Two Monochromatic Paintings: one in oil and one in acrylic) Exercises in Drawing and Painting / Materials and Techniques	25%
Critique 2 (Studio Exercises Experimenting with Complementary Color and culmination)	20%
Project 3 and Critique 3 (Light and Atmosphere using Triad palette)	20%
Project 4 and Critique 4 (Combining a Master and Contemporary Painter) semester presentation	25%
Attendance and Participation	10%
Total: Assignments (5 Paintings, painting exercises, sketchbook, research, writing, critiques)	100 points / 100%

COURSE SCHEDULE * Pawlowicz_2210_502_MW 2:00-4:50 Spring 2026

Pawlowicz	Day A Monday	Day B Wednesday	Notes
Week 1	January 12 Introduction to Syllabus/Project 1 Supply List Health and Safety	January 14 start Project 1/ continued Lecture Materials and Techniques drawing	
Week 2	January 19 NO CLASS MLK HOLIDAY	January 21 start Drawing and Painting Exercises	Black and White Oil
Week 3	January 26 start larger Project 1 Oil Painting	January 28 Research/ Studio Day	
Week 4	February 2 Visiting Artist Ceramics Research/ Studio Day	February 4 Research/ Studio Day	Black and White Acrylic
Week 5	February 9 Research/ Studio Day Introduce Project 2	February 11 Research/ Studio Day	
Week 6	February 16 Critique 1	February 18 Research/ Studio Day Lecture Color Theory	Start Project 2 Complementary Color
Week 7	February 23 Research/ Studio Day	February 25 Research/ Studio Day	
Week 8	March 2 Complementary Paintings	March 4 Research/ Studio Day In Progress Critique 2	Midterm
Week 9 Spring Break	March 9 NO CLASS	March 11 NO CLASS	NO CLASS
Week 10	March 16 Finish project 2/ lecture Project 3 Color Theory lecture	March 18 Project 2 Deadline	Start Project 3 Triad Palette
Week 11	March 23 Research/ Studio Day Project 3 Atmospheric Realism	March 25 Research/ Studio Day	
Week 12	March 30 Research/ Studio Day Intro to Final Project	April 1 <u>Project 3 Critique</u>	Final Projects
Week 13	April 6 Final Project Lecture	April 8 Final Project	
Week 14	April 13 Studio Research Day Senior Exit Reviews	April 15 Final Project/ Studio Research Day	Spot Evaluations
Week 15	April 20 in progress critique	April 22	Start classroom Clean up
Week 16	April 27	April 29 Final Critique	

***The Course Schedule is subject to change in content and scope at the Course Instructor's discretion.

REQUIRED & OPTIONAL COURSE MATERIALS / TEXTBOOKS

Students are responsible for purchasing all of the necessary materials prior to the class period and have them prepared for work in class on scheduled workdays. Students must have materials ready to use for class time. **Please do not paint over old paintings.** A beginning idea will need many iterations and refinement. Plan on writing, drawing and collecting ideas in research notebook and enlarging several drawings and painting sketches on primed cardboard and paper first. Instructor will assist students in recommending appropriate materials. Please see Supply List at the end of Syllabus.

Adobe Cloud Subscription Available to Students

Student Subscription Information

One-Time Cost: \$55.55 with your UNT-student discount

Access: Aug. 15, 2023, or from the date of purchase through Aug. 31, 2024

Details: <https://news.cvad.unt.edu/adobe-news>

Purchase: <https://unt.edu/adobe>

RECOMMENDED READINGS:

Recommended textbooks on reserve in 4th Floor Drawing and Painting Technician Office:

Painting as a Language, Material, Technique, Form and Content, Jean Robertson and Craig McDaniel, *The Oil Painting Book, Materials and Techniques for Today's Artist*, by Bill Creevy , Oil Painters Bible by Marilyn Scott, or *The Acrylics Book, Materials and Techniques*, by Barclay Sheaks. *Themes in Contemporary Art, Visual Art after 1980*, Jean Robertson and Craig McDaniel, Oxford University Press, 2005.

Electronic resources will be made throughout the semester as well as links to relevant museums and exhibitions.

CLASS PARTICIPATION EXPECTATIONS

I expect you to have materials and to work in each class. Time management is crucial in studio courses. Additional work is expected outside of class time to thoroughly complete projects. Classrooms are available on Fridays, evenings, and over the weekends. You may work in another class with the instructor's permission. I expect all students to attend instructor lecture presentations, participate in class discussions and be an active member in group critiques. Participation in critiques is included in each grade sheet. Missing more than one group critique class day will result in a project letter grade deduction. Missing the final critique will result in a course letter grade deduction along with project letter grade deduction. Tardiness or early departure from group critiques will not be tolerated and project letter grade will be deducted. You are expected to assist in maintaining a clean and healthy classroom environment that is conducive to learning. Inappropriate behavior in the classroom shall result in, minimally, a request to leave class, which will be counted as an unexcused absence.

ATTENDANCE POLICY

Regular and punctual attendance is mandatory.

- Three absences will be tolerated.
- More than three absences will require a note from a doctor or a note from Dean of Students for the absences covered under UNT policy 06.039 (Student Attendance and Authorized Absences) to be counted as excused.
- More than three absences will lower your final grade by one letter grade per additional absence (4 or more)
- Most lectures, demonstrations, and assignments will occur at the beginning of class periods and will not be repeated for those who come in late. If you are late to class, you will need to notify me at the end of the class period to replace an absence with a tardy. Three tardies will constitute an absence except on days when group critiques are scheduled. Tardies and early departures on critique days will constitute a letter grade deduction.
- A tardy is arrival 10 minutes after the beginning of class or leaving class early.
- Assignments that are turned in late will receive one letter grade lower per day for each day they are late.
- Examinations, quizzes, and in-class assignments missed may only be made up with an official doctor's excuse or note from the art office excusing the absence for a reason covered under UNT policy 06.039 (Student Attendance and Authorized Absences).
- Critiques missed may not be made up and grades will reflect the student's failure to participate in the critique discussions.

LATE WORK / MAKE-UP POLICY

Late work will receive a zero, unless the student provides proof of an acceptable mitigating circumstance: serious illness, death of a family member, or other circumstance if approved by the instructor. The late work can be submitted within one week but a zero will be averaged with the new grade.

On time artwork can be resubmitted within 2 weeks and two grades will be averaged.

Missing critiques is unacceptable and will result in a project letter grade deduction. Final critique will result in both project grade and course letter grade deduction.

GRADING

A = Excellent (100-90%)

B = Above Average (89-80%)

C = Average (79-70%)

D = Inferior (69-60%) [passing but not necessarily satisfying degree requirements]

F = Failure (59% or below)

A (excellent work): Requirements for the course have been more than fulfilled, and work has been developed beyond previous levels on both an aesthetic and a conceptual basis.

Completed artwork shows excellent intellectual skills and ideas, technical skill and craft, and control of the medium. Critical and conceptual understanding is evident through visual and verbal class participation.

B (very good work): The artwork, its presentation, and the student's class participation, all show competence in skill development, craft, and control of the medium. Critique verbal participation is evident through the visual and verbal.

C (average work): Requirements for the course have been fulfilled and satisfactory quality of work in class assignments and in class participation. The student has been present on critique days and for individual appointments (mid-term and final).

D (poor work): Below average attempts in class work, attendance, and participation

F (failure): Lack of attempt in class and class participation

Unfinished work will not be graded and receive a zero. You can redo each work and the old grade will be averaged with the new grade. Redo work must be received within 2 weeks of due date.

ACADEMIC INTEGRITY

According to UNT Policy 18.1.16, Student Academic Integrity, academic dishonesty occurs when students engage in behaviors including, but not limited to cheating, fabrication, facilitating academic dishonesty, forgery, plagiarism, and sabotage. A finding of academic dishonesty may result in a range of academic penalties or sanctions ranging from admonition to expulsion from the University.

DISABILITY ACCOMMODATION *

The University of North Texas makes reasonable academic accommodation for students with disabilities. Students seeking reasonable accommodation must first register with the Office of Disability Access (ODA) to verify their eligibility. If a disability is verified, the ODA will provide you with a reasonable accommodation letter to be delivered to faculty to begin a private discussion regarding your specific needs in a course. You may request reasonable accommodations at any time, however, ODA notices of reasonable accommodation should be provided as early as possible in the semester to avoid any delay in implementation. Note that students must obtain a new letter of reasonable accommodation for every semester and must meet with each faculty member prior to implementation in each class. Students are strongly encouraged to deliver letters of reasonable accommodation during faculty office hours or by appointment. Faculty members have the authority to ask students to discuss such letters during their designated office hours to protect the privacy of the student. For additional information, refer to the Office of Disability Access website at <http://www.unt.edu/oda>. You may also contact ODA by phone at (940) 565-4323.

EMERGENCY NOTIFICATION & PROCEDURES

UNT Emergency Guide: <http://guidebook.com/app/emergency/guide/unteitmerge>

UNT uses a system called Eagle Alert to quickly notify students with critical information in the event of an emergency (i.e., severe weather, campus closing, and health and public safety emergencies like chemical spills, fires, or violence). In the event of a university closure, please refer to the course management system for contingency plans for covering course materials.

Please call 911 in the event of an emergency. Please enter UNT Police 940-535-3000 in your cell phone directory.

ACCEPTABLE STUDENT BEHAVIOR

Student behavior that interferes with an instructor's ability to conduct a class or other students' opportunity to learn is unacceptable and disruptive and will not be tolerated in any instructional forum at UNT. Students engaging in unacceptable behavior will be directed to leave the classroom and the instructor may refer the student to the Dean of Students to consider whether the student's conduct violated the Code of Student Conduct. The University's expectations for student conduct apply to all instructional forums, including University and electronic classroom, labs, discussion groups, field trips, etc. The Code of Student Conduct can be found at deanofstudents.unt.edu/conduct.

STUDENT EVALUATION ADMINISTRATION DATES

Student feedback is important and an essential part of participation in this course. The student evaluation of instruction is a requirement for all organized classes at UNT. The survey will be made available during weeks 13 and 14 [November 19-30, 2018] of the long semesters to provide students with an opportunity to evaluate how this course is taught. Students will receive an email from "UNT SPOT Course Evaluations via IASystem Notification" (no-reply@iasystem.org) with the survey link. Students should look for the email in their UNT email inbox. Simply click on the link and complete the survey. Once students complete the survey they will receive a confirmation email that the survey has been submitted. For additional information, please visit the spot website at www.spot.unt.edu or email spot@unt.edu.

INCOMPLETE GRADES

An Incomplete Grade ("I") is a non-punitive grade given only during the last one-fourth of a term/semester and only if a student (1) is passing the course and (2) has a justifiable and documented reason, beyond the control of the student (such as serious illness or military service), for not completing the work on schedule.

In consultation with the instructor, complete a request for an Incomplete Grade. This form can be found on the department website and must be turned into the department chair prior to the last day of classes (not the exam date). Note: A grade of Incomplete is not automatically assigned to students

SEXUAL DISCRIMINATION, HARRASSMENT & ASSAULT

UNT is committed to providing an environment free of all forms of discrimination and sexual harassment, including sexual assault, domestic violence, dating violence, and stalking. If you (or someone you know) has experienced or experiences any of these acts of aggression, please know that you are not alone. The federal Title IX law makes it clear that violence and harassment based on sex and gender are Civil Rights offenses. UNT has staff members trained to support you in navigating campus life, accessing health and counseling services, providing academic and housing accommodations, helping with legal protective orders, and more.

UNT's Dean of Students' website offers a range of on-campus and off-campus resources to help support survivors, depending on their unique needs: http://deanofstudents.unt.edu/resources_0. UNT's Student Advocate she can be

reached through e-mail at SurvivorAdvocate@unt.edu or by calling the Dean of Students' office at 940-565-2648. You are not alone. We are here to help.

HEALTH & SAFETY PROGRAM

Students are required to follow the Department of Studio Art Health and Safety guidelines and are required to complete training for each studio course. The goal of the Studio Art Health and Safety Program is to protect the health and welfare of all faculty, staff, and students and to cooperate with the University of North Texas' Office of Risk Management. Please visit the website for details and the departmental handbook: <https://art.unt.edu/healthandsafety>.

Health & Safety Area Specific Information: Painting

1. Hazards of Media (inherent)

Educate yourself about the painting materials you are using by visiting the links below.

The hazards of traditional painting materials arise from exposure to pigments, solvents, and additives, and are dependent on the toxicity of those elements. Exposure can cause a variety of health issues (for both you and those around you) ranging from minor skin irritation to death. The primary forms of exposure to these toxic materials are inhalation, contact, and accidental ingestion. See the "Best Practices" section for way to avoid/lessen exposure.

	PIGMENTS	SOLVENTS	FORMALDEHYDE	ADDITIONAL NOTES
Acrylics				May contain ammonia and formaldehyde, causing eye/nose/throat irritation.
Oils				Oil mixed with pigment. Avoid skin contact and ingestion.
Alkyd				Used to make oils dry quicker. Avoid solvent inhalation and skin contact with pigments.
Tempera				Avoid inhalation of powdered pigments.
Latex				May contain glycols and mercury.
Watercolor/ Gouache				Gum Arabic can cause skin allergies and asthma. May contain formaldehyde.

Solvents (e.g. *Turpentine*, *Mineral Spirits*, *Odorless Mineral Spirits*, *Gamsol*, *Turpenoid*)

Solvents range from moderately to severely toxic. The primary forms of exposure are inhalation, absorption through the skin, and accidental ingestion. The use of solvents () poses a serious hazard. All solvents may cause skin allergies, narcosis (dizziness, nausea, fatigue, loss of coordination, coma), respiratory irritation, kidney damage, respiratory allergies, and brain damage. Ingestion can be fatal. Gamsol or turpenoid, which have had the aromatic hydrocarbons removed, are less hazardous. Solvents are also highly flammable. Even without a spark or fire, solvent/oil-soaked rags can spontaneously combust. Follow the CVAD Waste Management Chart when disposing of these materials.

Pigments

Many pigments are toxic and are known carcinogens, including those based on **lead**, **cadmium**, **mercury**, **chromates**, **manganese**, and **cobalt**. The main risk is from accidental ingestion of the pigments due to eating while working, nail-biting, pointing your brush with your lips, and similar means of

hand-to-mouth contact. Working with dry pigments or sanding dry paint layers can allow the pigments to be inhaled. Please make sure you read all labels carefully. Many of the pigments below have been synthetically formulated to substitute hazardous metals in art stores.

The following pigments contain toxic heavy metals:

- Antimony - Naples Yellow, Antimony, Antimony Red.
Longer cumulative effects can damage the lungs.
- Arsenic - Orpiment, Realgar, Conichalcite.
Acute poisoning can lead to death, cumulative effects can be carcinogenic.
- Borates - Borax, Boric Acid, Viridian Green (chromium oxide hydrate green)
- Lead - Naples Yellow, Lead White, Red Lead, Massicot, Zinc White (white seal), Galena, Colored glass powder, Lead Tin Yellow.
Cumulative effects lead to lead poisoning and nerve damage.
- Cadmium - All cadmium pigments and some colored glass flours contain cadmium.
The risk from the pigment itself is low. Burning cadmium pigments creates a toxic combustion product.
- Cobalt - All cobalt blue, green, yellow, violet, smalt.
The spinels cobalt blue and cobalt green are considered toxic in some countries, but not in others, according to various guidelines. Harmful if inhaled or swallowed, risk of cumulative effects.
- Copper - Azurite, Malachite, Chrysocolla, Verdigris, Egyptian Blue, Han Blue, Ploss Blue, Blue Verditer, Phthalo Blue and Green.
Harmful if inhaled or swallowed.
- Manganese - Manganese brown, black, gray, violet, purple, umber.
Cumulative effects lead to nerve damage.
- Nickel - Nickel titanium yellow, Indian yellow imitation.
Cumulative effects damage the kidneys and lead to allergic reactions.
- Mercury - Vermilion natural and synthetic.
Cumulative effects lead to poisoning and nerve damage.

2. Best Practices

- Wear gloves, wash hands regularly, and avoid any skin exposure to materials.
- Try to brush items rather than spraying if possible.
- Never use aerosol media in the classroom. Use the spray booths provided.
- Avoid inhaling pigment powder.
- Turpentine and mineral spirits are *prohibited* in the studio. Gamsol is provided by the area.
- Keep your solvent container covered while painting.
- Solvent washes are strongly discouraged.
- Reuse Gamsol by allowing sediment to settle in jar.
- Brush washing primarily takes place at your station with a jar, brush caddy, Gamsol, and paper towel. This assures as little paint as possible will go down the sink.
- Store all flammables in the flammable cabinet. Keep flammable cabinet always closed.
- Wear closed-toed shoes
- Tie long hair back

3. Links

<http://www.utrechtart.com/MSDS-Sheets-g26t0.utrecht>

<http://www.ci.tucson.az.us/arthazards/paint3.html>

<http://web.princeton.edu/sites/ehs/artsafety/sec10.htm>

<http://www.chicagoartistsresource.org/node/9279>

<http://www.library.wvu.edu/ref/subguides/art/arthazards.html>

4. Area Rules

All users of the studio classrooms are expected to follow studio area rules at all times. If you have any questions, ask your instructor.

- In case of emergency, call campus police at (940) 565-3000 or call 911
- File an incident report (forms may be found in the CVAD H&S Handbook and in the main office) within 48 hours of the event.
- Follow all CVAD Health and Safety handbook guidelines (the handbook should be reviewed by your instructor and can be found here: <https://art.unt.edu/healthandsafety>).
- Follow the CVAD Waste Management Chart in the classroom and other health & safety guidelines posted.
- Respect the workspace and your fellow classmates.
- Leave the space cleaner than you found it.
 - -Clean up and organize your surroundings.
 - -Throw away any trash (whether it's yours or not).
 - -Wipe down your easel, tabouret, and floor.
 - -Wipe down sinks at the end of class.
- Respect other's work. Do not use or move other students' work/materials.
- No food, drink, or alcohol allowed in the studio
- Practice best practices for material handling. If you have questions about a material, ask your instructor for guidance.
- Do not spray any aerosols in any CVAD classroom/studio/doorway or exterior wall/floor. Use the spray booths provided.
- Familiarize yourself with the eyewash station
- Razor blades, X-Acto blades and any other small sharp refuse goes in the sharps container at SAA station.
- Do not remove/borrow furniture from rooms without permission from faculty or D&P coordinator.
- Do not prop classroom doors. Doors must remain closed for the building hvac and ventilation work properly.
- Do not create "daisy chains" with multiple electric cords.
- Absolutely no paint, solvents, or hazardous materials down sinks.
- Store all flammables in the flammable cabinet. Keep flammable cabinet closed at all times.
- First aid kits are found in each studio. Notify your instructor or area technician if supplies are low.
- Report any safety issues immediately to your instructor or area technician.
- All courses must engage in an end of the semester clean up.
- Theft will not be tolerated.
- Follow the **CVAD CONTAINER POLICY** (see below)
-

There are 3 types of labels used in CVAD.

All containers must have a label identifying the contents at all times.

UNIVERSAL LABELS (while chemical is in use):

All secondary/satellite containers for hazardous materials (or what might be perceived as hazardous - i.e. watered-down gesso, graphite solutions, satellite containers of solvents, powders, spray paints, fixatives, oils, solvents) must be marked with content, your name and the date opened. All unmarked containers will be disposed of with no notice. Labels can be found in the studios. All containers must be marked with your name, contents and date opened.

UNIVERSAL WASTE LABELS (when material is designated as waste):

All containers solely containing a universal waste must have a universal waste label identifying the contents as "Universal Waste - (type of universal waste)" that are designated as waste for proper disposal. The label must also include the date the first item of universal waste entered the container.

HAZARDOUS WASTE LABELS

All hazardous waste containers must have a label identifying the contents as hazardous.

Labels should include all constituents in the waste mixture as well as an approximate percentage of the total for that item. All constituents should equal 100%.

CVAD 4th FLOOR WOOD SHOP

Hours of Woodshop operation are (subject to change): Monday-Friday 8-5pm

Safety orientation take about 15 minutes. Students are required to go through safety orientation prior to using the general access woodshop. After attending an orientation, the student will have swipe access during open hours (this will be different this term—see above). For more details, please contact Lindsey Bass at Lindsey.Bass@unt.edu

END OF TERM PAINTING ROOM CLEAN UP Students should attend and participate in studio clean up on **December 13 Friday at 9am**. You are responsible for cleaning your work area, your storage area, your assigned palette, and your hazardous materials area (inside the chemical cabinet). You are to remove on this day all stored work and materials from both your storage cubby and your rented locker. Gamsol and Silcoils will be recycled on this day. Please note: Studio final day to remove work December 13, Friday at 9am: **Any artwork or materials left after this day will not be stored for you and will be disposed of. There are no exceptions to this deadline. Please take your work home after the final critique.**

ACADEMIC SUPPORT & STUDENT SERVICES

STUDENT SUPPORT SERVICES

Mental Health

UNT provides mental health resources to students to help ensure there are numerous outlets to turn to that wholeheartedly care for and are there for students in need, regardless of the nature of an issue or its severity. Listed below are several resources on campus that can support your academic success and mental well-being:

- Student Health and Wellness Center (<https://studentaffairs.unt.edu/student-health-and-wellness-center>)

- Counseling and Testing Services (<https://studentaffairs.unt.edu/counseling-and-testing-services>)
- UNT Care Team (<https://studentaffairs.unt.edu/care>)
- UNT Psychiatric Services (<https://studentaffairs.unt.edu/student-health-and-wellness-center/services/psychiatry>)
- Individual Counseling (<https://studentaffairs.unt.edu/counseling-and-testing-services/services/individual-counseling>)

Chosen Names

A chosen name is a name that a person goes by that may or may not match their legal name. If you have a chosen name that is different from your legal name and would like that to be used in class, please let the instructor know. Below is a list of resources for updating your chosen name at UNT.

- UNT Records
- UNT ID Card
- UNT Email Address
- Legal Name

**UNT eUIDs cannot be changed at this time. The collaborating offices are working on a process to make this option accessible to UNT community members.*

Pronouns

Pronouns (she/her, they/them, he/him, etc.) are a public way for people to address you, much like your name, and can be shared with a name when making an introduction, both virtually and in-person. Just as we ask and don't assume someone's name, we should also ask and not assume someone's pronouns.

You can add your pronouns to your Canvas account so that they follow your name when posting to discussion boards, submitting assignments, etc.

Below is a list of additional resources regarding pronouns and their usage:

- What are pronouns and why are they important?
- How do I use pronouns?
- How do I share my pronouns?
- How do I ask for another person's pronouns?
- How do I correct myself or others when the wrong pronoun is used?

Additional Student Support Services

- Registrar (<https://registrar.unt.edu/registration>)
- Financial Aid (<https://financialaid.unt.edu/>)
- Student Legal Services (<https://studentaffairs.unt.edu/student-legal-services>)
- Career Center (<https://studentaffairs.unt.edu/career-center>)
- Multicultural Center (<https://edo.unt.edu/multicultural-center>)
- Counseling and Testing Services (<https://studentaffairs.unt.edu/counseling-and-testing-services>)
- Pride Alliance (<https://edo.unt.edu/pridealliance>)
- UNT Food Pantry (<https://deanofstudents.unt.edu/resources/food-pantry>)

ACADEMIC SUPPORT SERVICES

- Academic Resource Center (<https://clear.unt.edu/canvas/student-resources>)
- Academic Success Center (<https://success.unt.edu/asc>)
- UNT Libraries (<https://library.unt.edu/>)
- Writing Lab (<http://writingcenter.unt.edu/>)

Art 2210 Beginning Painting I Elaine Pawlowicz Supply List

The first project for this course will be to do two paintings: ivory black and titanium white in both oil and acrylic paint. Then, you may decide which kind of paint you desire to use for the remaining semester.

You may supplement the supply list with the materials that you have already purchased.

***Required for Project 1**

You will be provided with a glass palette and jar of Gamsol (solvent for oil paint)

***SKETCHBOOK 9"x12"**

BRUSHES:

You will need more than one brush!

***Bring in all brushes you already own (we will discuss in class)**

Buy an economical brush set to start and can add to this set as needed. You will learn about each type of brush and your specific needs over the semester.

Hog bristle brushes are best for (rounds, flat, filbert shape) for oil paint

synthetic/nylon brushes are best for acrylic paint

Synthetic sable brushes are great for more detailed work. I will recommend these accordingly for your natural style of painting but to start you might try a # 8 round and #8 bright.

*cheap bristle brushes for preparing canvas large 1" or 2" brushes (Home Depot or Loews)
-1 small round brush for details

***Metal Palette knife small bullnose trowel**

SUPPORTS

***You will need (2) two pre-made 18"x24" canvases for the first project.** You can buy .5 inch wide stretchers (inexpensive ones) to start. Use coupons for Michaels or Joann's to start.

You will need a total of 5 canvases for this course. The first 2 will be 18"x24". The next three will be your choice of size but should be larger than 18"x24". It will depend on your ideas for Project 2-4. Canvases and materials will be discussed in the 1st week of class.

***12 pieces of cut cardboard or heavy paper (9" X 12") with a layer of gesso applied to experiment with different materials and techniques for project 1.** You can also buy canvas board, canvas paper, acrylic paper, mixed media paper etc..whatever you can afford

***You will need one a drawing board at least 20" x 24"** so you can support your drawings and small painting studies with tape.

Bottle of White Gesso: Your premade canvas, cardboard, and/or paper will need to be primed with gesso acrylic paint.

Paint: TO START PROJECT 1

***One tube: titanium white oil**

***One tube: titanium white acrylic**

***One tube: ivory black/ primary/ mars black oil paint**

***One tube: ivory black/primary/ mars black acrylic paint**

***One bottle of white gesso**

Paint for PROJECT 2

Once you decide which type of paint (oil or acrylic) you prefer, you will need to buy a total of 4 tubes of color OR you can buy a larger set for the rest of the semester

1.cadmium red (hue)

2.cadmium yellow light or cadmium yellow medium (hue)

3.ultramarine blue

4.Select one tube: Dioxazine Purple or Cadmium Red Light Hue or Phthalocyanine Green

For Project 3 and 4

1. Recommend a Raw Umber

2. 3. And the other 2 colors not purchased in #4 above

You can also invest in a small set of basic colors instead of buying each color individually. I am trying to work with everyone's budget, and it may be better for some to buy individual paint tubes as the semester progresses.

I recommend Liquitex, Golden Acrylic Paint , Windsor Newton Oil Paint, and Gamblin Oil Paint They sell student grade paint which is acceptable for our class. It is much cheaper to start. Voertmans is the art store near campus. Jerry's Artorama, near Preston Road and 635, is the largest art store in Dallas. They have many brands and competitive prices. Michaels is also a good source along with DickBlick.com (largest mail order, art supply company with good pricing)

Later we can add more colors. Bring in any paint that you already have.

Some popular artist colors: titanium white, ivory black, cadmium yellow light (hue), cadmium yellow medium(hue), yellow ochre, raw sienna, burnt sienna, burnt umber, raw umber, alizarin crimson, cadmium red (hue), cadmium red light (hue), cadmium orange (hue), dioxazine purple, ultramarine blue, cerulean blue hue, permanent green and Phthalocyanine green.

You do not need to purchase all colors. I am simply providing a list of colors

MEDIUMS:

(I will discuss in class)

Empty plastic containers for water

***Small water mister/sprayer for acrylics**

Linseed oil (oil medium)

Liquin or Galkyd (oil medium)

Acrylic gloss medium (acrylic medium) in bottle

airbrush medium (acrylic)

DRAWING SUPPLIES:

Assortment: bring what you have

Few pieces of vine charcoal

compressed charcoal

grey eraser

2B pencils

white chalk

grey or blue watercolor pencil

blue painters' tape (Home Depot/Loews)

glue stick

2 Metal Clips

scissors

Heavy Shop Blue Paper Towels (Home Depot/Loews)

18" x 24" white drawing paper pad

9" x12" sketchbook: I recommend this size since we will be working heavily with 3x4 proportion formats

***Drawing board 24"x 36" (used to support cardboard surfaces and paper)**

recommend buying this size so you can also use it for Figure Drawing. This size will allow you support a large sheet of Rives Paper (22" x 30") which is often used in Figure Drawing for longer charcoal studies. You will continue to use this drawing board throughout all of your drawing and painting courses. Please put your name on it.

ADDITIONAL SUPPLIES:

Apron or old shirt to protect clothes

*Must wear closed-toed shoes in studio, no sandals

PERMISSION TO USE STUDENT ARTWORK

We would like to use your work to spread the news about the amazing art made at CVAD! Please help us put your talent on display by allowing us to photograph and exhibit your art on CVAD's social media, websites and paper advertising. Thank you!

I hereby grant permission to UNT and CVAD to use, copy, reproduce, publish, distribute or display any and all works created in my classes while at UNT. Additionally, I consent to the use of my name to coincide with images of my artwork.

1. Scope of Permission. This permission extends to the use of the described work and images of such work: (1) for academic purposes in order to demonstrate examples of student work to current and future UNT students; (2) for public display in the galleries or on the campus of the UNT or on the UNT website; (3) for promotional materials created by UNT in all forms of media now known or later developed, including but not limited to exhibition catalogues, direct mail, websites, advertising, social media, and classroom presentations. My permission is on-going, but can be revoked by giving the professor of record for this course written notice of my wish to revoke permission and use of any images of my artwork. UNT will have three months from the date of my notice to stop all use agreed with this permission.

2. Certificate of Ownership. I am the owner of all work submitted and the work is not subject to any restriction that would prevent its use consistent with this permission. All aspects of the work are original to me and have not been copied. I understand that as owner of the work I have the right to control all reproduction, copying and use of the work in accordance with U.S. copyright laws.

3. Privacy Release. I hereby authorize and consent to the release, maintenance and display of my name if necessary and any other personally identifiable information that I have provided in connection with the work and its use described in this Agreement.

4. Signature. By signing below I hereby grant the permissions indicated above. I understand that this grant of permission relates only to the use of the described work. This is not an exclusive right and I may sell, give or otherwise transfer the rights to such work to others on a non-exclusive or exclusive basis. However, in the event that I do sell, give or otherwise transfer ownership or the exclusive right to use my work to another party, I will notify UNT immediately in writing through the professor of record for this course. UNT will have three months from the date of my notice to stop all use in accordance with this permission.

Printed name: _____

Signature: _____

Date: _____

Name of Course: _____

STUDENT ACKNOWLEDGEMENT*

Provide a “tear off” or separate page with a place for the student(s) to sign a declaration of understanding and agreement with the above syllabus provisions and risk factor. Or similarly, create a required quiz in Canvas/Blackboard.

I _____ (print your full name)
acknowledge that I have read the course syllabus. I understand the course structure, grading
and attendance policies. I hereby agree to the syllabus and its provisions.

_____		_____
Course number and section		Risk Rating
_____		_____
Student phone #, e-mail address (print)	Signature	Date
_____		_____
Faculty Name	Signature	Date