



ASTU 3206-502 / Fall 2025
Drawing and Painting: Themes, Variations, and Series
University of North Texas

Instructor: Elaine Pawlowicz (she, hers, her)

Office Location: Room 306 CVAD

Office Hours: 10:30a.m.-1:30a.m. Wednesdays or by appointment

Email: Elaine.Pawlowicz@unt.edu

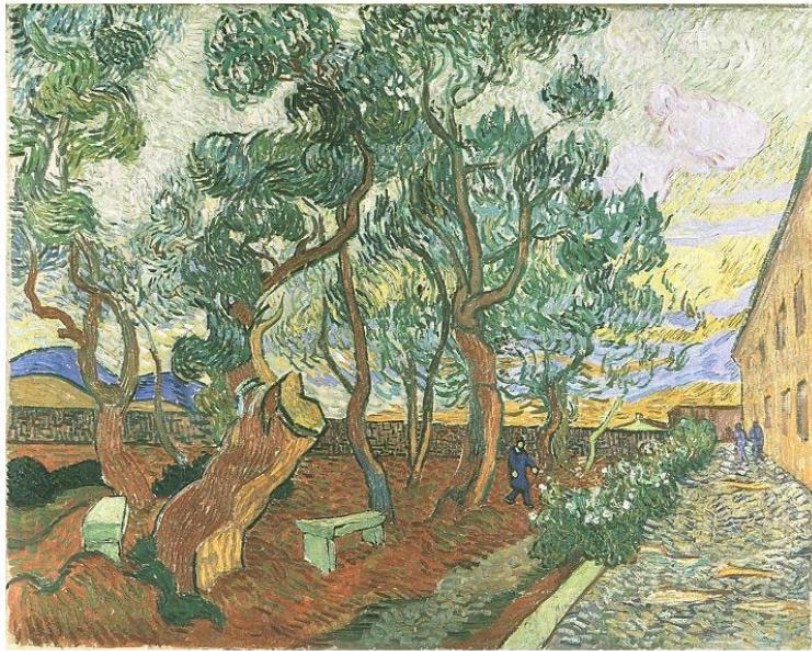
Class Location: Room 466 CVAD

Class Times: Fridays 9:00a.m. -2:50p.m.

Term: Fall 2025

Studio Art Office Phone Number: 940-369-7671

“Great things are done by a series of small things brought together”
Vincent Van Gogh



Vincent Van Gogh, *Garden of St. Paul Hospital*, 1889

Art Building Hours

- Monday–Thursday: 7 a.m.–10 p.m.
- Friday: 7 a.m.–5 p.m.
- Saturday: 9 a.m.–5 p.m.
- Sunday: Noon–10 p.m.
- Hours may change

4th Floor Woodshop

9-5pm M-Friday

* hours may change

COURSE DESCRIPTION

ASTU 3601 Themes, Variations, and Series

3 hours (0;6). Topics vary each semester. This course provides students with opportunities to engage in a range of methods, materials, sources, concepts, and dialogue related to the disciplines of drawing and/or painting. Prerequisite; ASTU 2202 with a C or better.

Topic: Exploration of the strategy of the series in drawing and painting to deconstruct, transform, distill, unpack, or otherwise evolve an idea.

The course is designed to ask questions and find strategies for developing a personal body of work. Students will cultivate a consistent and individualized studio practice, supported by group discussions, presentations, individual meetings, and critiques. Together, we will explore and analyze the aesthetic concepts, themes, and formal choices that inform your work. As a laboratory-style course, it encourages intermediate students to experiment boldly and meaningfully advance their creative processes, aesthetic sensibilities, technical skills, and intellectual inquiry.

Outcomes	Objectives
Knowledge: What students should know	
Understand the history, current issues, and direction of the artistic discipline	Develop advanced knowledge of the traditions, conventions, and evolutions of the discipline as related to issues of representation, illusion, and meaning
Place works in the historical, cultural, and stylistic contexts of the artistic discipline	
Use the technology and equipment of the artistic discipline	Acquire increasing knowledge and skills in the use of basic tools, techniques, and processes sufficient to work from concept to finished product, including knowledge of paints and surfaces.
Skills: What students should be able to do	
Use the elements and principles of art to create artworks in the artistic discipline	Advanced understanding of principles of design and color, concepts, media and formats, and the ability to apply them to a specific aesthetic intent.
Create artwork that demonstrates perceptual acuity, conceptual understanding, and technical skill	Develop increasing ability to synthesize the use of drawing, two-dimensional design, and color, continuing to develop a consistent, personal direction and style
Analyze and evaluate works of art in the artistic discipline	Develop advanced skill in the analysis and evaluation of paintings.
Synthesis: How students will combine knowledge and skill to demonstrate learning	
Produce artworks demonstrating technical skill and disciplinary knowledge	Advanced exploration of the expressive possibilities of various media, and the diverse conceptual modes available to the painter. Apply the vocabulary of art and design to the critique and analysis of own paintings and the works of others.
Use knowledge of art and disciplinary vocabulary to analyze artworks	
Participate in critiques of own work and work of others	

COURSE CONTENT & SCHEDULE CHANGES

The subjects are chosen to cover a broad spectrum of experiences for the Beginning student. Learning to see, working from observation and discovering composition, proportion and space are practiced. Historical and contemporary models are examined regularly. The use of color to create form is explored. Demonstrations provided when necessary. The course schedule is subject to change in content and scope at the Course Instructor's discretion.

COURSE REQUIREMENTS

Each student will accomplish at least four to five meaningful and complete works in this course. Mandatory participation in critiques is crucial. Work will not be critiqued if it is not finished resulting in failure. Project grades (except for the final project) may be reconsidered if the student desires to improve the work. Improvements must be made within 2 weeks of the project grade. The original grade is averaged with the second attempt. If a student does not attend the final critique day, a letter grade course reduction will result. Students who arrive late to critiques or leave early will receive a letter grade deduction from their project grade. Students who do not attend other student's critiques will also receive a letter grade deduction except for excused absences. All students must have materials ready to work in class for each assignment. Students are highly recommended to attend museum and gallery exhibitions along with artist lectures in Dallas, Fort Worth and Denton. Students will be required to do preliminary drawings, small studies, research, and readings. Students must work independently during and outside of class to complete projects. Class participation will be calculated into each project grade.

ASSIGNMENT & ASSESSMENTS *

Project 1 and Critique 1 Variations of a Form	20%
Project 2 and Critique 2 Finding Kindred Art Spirits	20%
Project 3 and Critique 3 Exploring Space and Format	25%
Project 4 and Critique 4 Open Project	25%
Attendance and Participation	10%
Total: Assignments (Drawing and Paintings, exercises, sketchbook, research, writing, critiques, participation, and attendance)	100 points / 100%

Pawlowicz	Friday	Notes
Week 1 August 22	Project 1 intro to syllabus and to each other	Bring drawing supplies and 12 surfaces
Week 2 August 29	Project 1 finish exercises start larger painting	
Week 3 September 5	Work on larger paintings	
Week 4 September 12	Critique 1 Start Project 2	
Week 5 September 19	Bring images to class/ collage compositions start paintings	
Week 6 September 26	Studio Research	
Week 7 October 3	Critique 2/ Start Project 3 Space and Format	
Week 8 October 10	Studio Research	Midterm
Week 9 October 17	Studio Research	
Week 10 October 24	Studio Research	
Week 11 October 31	Critique 3 Start Research on Project 4	
Week 12 November 7		Last day to drop courses with W grade
Week 13 November 14	Studio Research	
Week 14 November 17	Studio Research	
Week 15 November 28	Thanksgiving Break	No Class
Week 16 November 5	Critique 4	

***The Course Schedule is subject to change in content and scope at the Course Instructor's discretion.

REQUIRED & OPTIONAL COURSE MATERIALS / TEXTBOOKS

Students are responsible for purchasing their necessary materials prior to the class period and have them prepared for work in class on scheduled workdays. Students must have materials ready to use for class time. **Please do not paint over old paintings.** A beginning idea will need many iterations and refinement. Plan on writing, drawing and collecting ideas in research notebook and enlarging several drawings and painting sketches on primed cardboard and paper first. Instructor will assist students in recommending appropriate materials. Please see Supply List at the end of Syllabus.

RECOMMENDED READINGS:

Recommended textbooks on reserve in 4th Floor Drawing and Painting Technician Office:
Painting as a Language, Material, Technique, Form and Content, Themes in Contemporary Art, Visual Art after 1980, Jean Robertson and Craig McDaniel, Oxford University Press, 2005.

Electronic resources will be made throughout the semester as well as links to relevant museums and exhibitions.

CLASS PARTICIPATION EXPECTATIONS

I expect you to have materials and to work in each class. Time management is crucial in studio courses. Additional work is expected outside of class time to thoroughly complete projects. Classrooms are available on Fridays, evenings, and over the weekends. You may work in another class with the instructor's permission. I expect all students to attend instructor lecture presentations, participate in class discussions and be an active member in group critiques. Participation in critiques is included in each grade sheet. Tardiness or early departure from group critiques will not be tolerated and project letter grade will be deducted. You are expected to assist in maintaining a clean and healthy classroom environment that is conducive to learning. Inappropriate behavior in the classroom shall result in, minimally, a request to leave class, which will be counted as an unexcused absence.

Course Content Statement Content in the arts can sometimes include works, situations, actions, and language that can be personally challenging or offensive to some students on the grounds, for example, of sexual explicitness, violence, or blasphemy. As the College of Visual Arts and Design is devoted to the principle of freedom of expression, artistic and otherwise, and it is not the college's practice to censor these works or ideas on any of these grounds. Students who might feel unduly distressed or made uncomfortable by such expressions should withdraw at the start of the term and seek another course.

ATTENDANCE POLICY

Regular and punctual attendance is mandatory.

- This course meets once a week. Each class day is considered two studio art classes.
- Two (full day) absences will be tolerated.

- More than 3 full day absences will require a note from a doctor or a note from Dean of Students for the absences covered under UNT policy 06.039 (Student Attendance and Authorized Absences) to be counted as excused.
- Three (full day) absences will lower your final grade by one letter grade. Four full day absences will lower your final grade by two letter grades. Please note that all studio classes must receive a C or better to count towards the BFA Studio Art degree. 4.5 or more absences will result in failure for this course.
- Most lectures, demonstrations, and assignments will occur at the beginning of class periods and will not be repeated for those who come in late. If you are late to class, you will need to notify me at the end of the class period to replace an absence with a tardy. Three tardies will constitute an absence except on days when group critiques are scheduled. Tardies and early departures on critique days will constitute a letter grade deduction.
- A tardy is arrival 15 minutes after the beginning of class or leaving class early.
- Examinations, quizzes, and in-class assignments missed may only be made up with an official doctor's excuse or note from Dean of Student Affairs excusing the absence for a reason covered under UNT policy 06.039 (Student Attendance and Authorized Absences).
- Critiques missed may not be made up and grades will reflect the student's failure to participate in the critique discussions.

LATE WORK / MAKE-UP POLICY/ CRITIQUE ABSENCES

Late work will receive a zero, unless the student provides proof of an acceptable mitigating circumstance: serious illness, death of a family member, or other circumstance if approved by the instructor. The late work must be submitted within two weeks. A zero will be averaged with the late grade.

On time artwork can be resubmitted within 2 weeks and two grades will be averaged.

Missing critiques is unacceptable and will result in a project letter grade deduction.

Missing Final critiques will result in both project grade and course letter grade deduction.

GRADING

A = Excellent (100-90%)

B = Above Average (89-80%)

C = Average (79-70%)

D = Inferior (69-60%) [passing but not necessarily satisfying degree requirements]

F = Failure (59% or below)

A (excellent work): Requirements for the course have been more than fulfilled, and work has been developed beyond previous levels on both an aesthetic and a conceptual basis.

Completed artwork shows excellent intellectual skills and ideas, technical skill and craft, and control of the medium. Critical and conceptual understanding is evident through visual and verbal class participation.

B (very good work): The artwork, its presentation, and the student's class participation, all show competence in skill development, craft, and control of the medium. Critique verbal participation is evident through the visual and verbal.

C (average work): Requirements for the course have been fulfilled and satisfactory quality of work in class assignments and in class participation. The student has been present on critique days and for individual appointments (mid-term and final).

D (poor work): Below average attempts in class work, attendance, and participation

F (failure): Lack of attempt in class and class participation

Unfinished work will not be graded and receive a zero. You can redo each work and the old grade will be averaged with the new grade. Redo work must be received within 2 weeks of due date.

ACADEMIC INTEGRITY

According to UNT Policy 18.1.16, Student Academic Integrity, academic dishonesty occurs when students engage in behaviors including, but not limited to cheating, fabrication, facilitating academic dishonesty, forgery, plagiarism, and sabotage. A finding of academic dishonesty may result in a range of academic penalties or sanctions ranging from admonition to expulsion from the University.

Policy on Generative Artificial Intelligence for this course:

The use of GenAI tools is generally welcomed and even encouraged (or required) when cited appropriately, provided the final product reflects the student's creative input and decision-making.

DISABILITY ACCOMODATION *

The University of North Texas makes reasonable academic accommodation for students with disabilities. Students seeking reasonable accommodation must first register with the Office of Disability Access (ODA) to verify their eligibility. If a disability is verified, the ODA will provide you with a reasonable accommodation letter to be delivered to faculty to begin a private discussion regarding your specific needs in a course. You may request reasonable accommodations at any time, however, ODA notices of reasonable accommodation should be provided as early as possible in the semester to avoid any delay in implementation. Note that students must obtain a new letter of reasonable accommodation for every semester and must meet with each faculty member prior to implementation in each class. Students are strongly encouraged to deliver letters of reasonable accommodation during faculty office hours or by appointment. Faculty members have the authority to ask students to discuss such letters during their designated office hours to protect the privacy of the student. For additional information, refer to the Office of Disability Access website at <http://www.unt.edu/oda>. You may also contact ODA by phone at (940) 565-4323.

EMERGENCY NOTIFICATION & PROCEDURES

UNT Emergency Guide: <http://guidebook.com/app/emergency/guide/unteitmerge>

UNT uses a system called Eagle Alert to quickly notify students with critical information in the event of an emergency (i.e., severe weather, campus closing, and health and public safety emergencies like chemical spills, fires, or violence). In the event of a university closure, please refer to the course management system for contingency plans for covering course materials.

Please call 911 in the event of an emergency. Please enter UNT Police 940-535-3000 in your cell phone directory.

ACCEPTABLE STUDENT BEHAVIOR

Student behavior that interferes with an instructor's ability to conduct a class or other students' opportunity to learn is unacceptable and disruptive and will not be tolerated in any instructional forum at UNT. Students engaging in unacceptable behavior will be directed to leave the classroom and the instructor may refer the student to the Dean of Students to consider whether the student's conduct violated the Code of Student Conduct. The University's expectations for student conduct apply to all instructional forums, including University and electronic classroom, labs, discussion groups, field trips, etc. The Code of Student Conduct can be found at deanofstudents.unt.edu/conduct.

STUDENT EVALUATION ADMINISTRATION DATES

Student feedback is important and an essential part of participation in this course. The student evaluation of instruction is a requirement for all organized classes at UNT. The survey will be made available during weeks 13 and 14 [November 19-30, 2018] of the long semesters to provide students with an opportunity to evaluate how this course is taught. Students will receive an email from "UNT SPOT Course Evaluations via IASystem Notification" (no-reply@iasystem.org) with the survey link. Students should look for the email in their UNT email inbox. Simply click on the link and complete the survey. Once students complete the survey they will receive a confirmation email that the survey has been submitted. For additional information, please visit the spot website at www.spot.unt.edu or email spot@unt.edu.

INCOMPLETE GRADES

An Incomplete Grade ("I") is a non-punitive grade given only during the last one-fourth of a term/semester and only if a student (1) is passing the course and (2) has a justifiable and documented reason, beyond the control of the student (such as serious illness or military service), for not completing the work on schedule.

In consultation with the instructor, complete a request for an Incomplete Grade. This form can be found on the department website and must be turned into the department chair prior to the last day of classes (not the exam date). Note: A grade of Incomplete is not automatically assigned to students

SEXUAL DISCRIMINATION, HARRASSMENT & ASSAULT

UNT is committed to providing an environment free of all forms of discrimination and sexual harassment, including sexual assault, domestic violence, dating violence, and stalking. If you (or someone you know) has experienced or experiences any of these acts of aggression, please know that you are not alone. The federal Title IX law makes it clear that violence and

harassment based on sex and gender are Civil Rights offenses. UNT has staff members trained to support you in navigating campus life, accessing health and counseling services, providing academic and housing accommodations, helping with legal protective orders, and more.

UNT's Dean of Students' website offers a range of on-campus and off-campus resources to help support survivors, depending on their unique needs: http://deanofstudents.unt.edu/resources_0. UNT's Student Advocate she can be reached through e-mail at SurvivorAdvocate@unt.edu or by calling the Dean of Students' office at 940-565-2648. You are not alone. We are here to help.

HEALTH & SAFETY PROGRAM

Students are required to follow the Department of Studio Art Health and Safety guidelines and are required to complete training for each studio course. The goal of the Studio Art Health and Safety Program is to protect the health and welfare of all faculty, staff, and students and to cooperate with the University of North Texas' Office of Risk Management. Please visit the website for details and the departmental handbook: <https://art.unt.edu/healthandsafety>.

Health & Safety Area Specific Information: Painting

1. Hazards of Media (inherent)

Educate yourself about the painting materials you are using by visiting the links below.

The hazards of traditional painting materials arise from exposure to pigments, solvents, and additives, and are dependent on the toxicity of those elements. Exposure can cause a variety of health issues (for both you and those around you) ranging from minor skin irritation to death. The primary forms of exposure to these toxic materials are inhalation, contact, and accidental ingestion. See the "Best Practices" section for way to avoid/lessen exposure.

	PIGMENTS	SOLVENTS	FORMALDEHYDE	ADDITIONAL NOTES
Acrylics				May contain ammonia and formaldehyde, causing eye/nose/throat irritation.
Oils				Oil mixed with pigment. Avoid skin contact and ingestion.
Alkyd				Used to make oils dry quicker. Avoid solvent inhalation and skin contact with pigments.
Tempera				Avoid inhalation of powdered pigments.
Latex				May contain glycols and mercury.
Watercolor/ Gouache				Gum Arabic can cause skin allergies and asthma. May contain formaldehyde.

Solvents (e.g. Turpentine, Mineral Spirits, **Odorless Mineral Spirits**, Gamsol, Turpenoid)

Solvents range from moderately to severely toxic. The primary forms of exposure are inhalation, absorption through the skin, and accidental ingestion. The use of solvents () poses a serious hazard. All solvents may cause skin allergies, narcosis (dizziness, nausea, fatigue, loss of coordination, coma), respiratory irritation, kidney damage, respiratory allergies, and brain damage. Ingestion can be fatal. Gamsol or turpenoid, which have had the aromatic hydrocarbons removed, are less hazardous. Solvents are also highly flammable. Even without a spark or fire, solvent/oil-soaked rags can spontaneously combust. Follow the CVAD Waste Management Chart when disposing of these materials.

Pigments

Many pigments are toxic and are known carcinogens, including those based on **lead, cadmium, mercury, chromates, manganese, and cobalt**. The main risk is from accidental ingestion of the pigments due to eating while working, nail-biting, pointing your brush with your lips, and similar means of hand-to-mouth contact. Working with dry pigments or sanding dry paint layers can allow the pigments to be inhaled. Please make sure you read all labels carefully. Many of the pigments below have been synthetically formulated to substitute hazardous metals in art stores.

The following pigments contain toxic heavy metals:

- Antimony - Naples Yellow, Antimony, Antimony Red.
Longer cumulative effects can damage the lungs.
- Arsenic - Orpiment, Realgar, Conichalcite.
Acute poisoning can lead to death, cumulative effects can be carcinogenic.
- Borates - Borax, Boric Acid, Viridian Green (chromium oxide hydrate green)
- Lead - Naples Yellow, Lead White, Red Lead, Massicot, Zinc White (white seal), Galena, Colored glass powder, Lead Tin Yellow.
Cumulative effects lead to lead poisoning and nerve damage.
- Cadmium - All cadmium pigments and some colored glass flours contain cadmium.
The risk from the pigment itself is low. Burning cadmium pigments creates a toxic combustion product.
- Cobalt - All cobalt blue, green, yellow, violet, smalt.
The spinels cobalt blue and cobalt green are considered toxic in some countries, but not in others, according to various guidelines. Harmful if inhaled or swallowed, risk of cumulative effects.
- Copper - Azurite, Malachite, Chrysocolla, Verdigris, Egyptian Blue, Han Blue, Ploss Blue, Blue Verditer, Phthalo Blue and Green.
Harmful if inhaled or swallowed.
- Manganese - Manganese brown, black, gray, violet, purple, umber.
Cumulative effects lead to nerve damage.
- Nickel - Nickel titanium yellow, Indian yellow imitation.
Cumulative effects damage the kidneys and lead to allergic reactions.
- Mercury - Vermilion natural and synthetic.
Cumulative effects lead to poisoning and nerve damage.

2. Best Practices

- Wear gloves, wash hands regularly, and avoid any skin exposure to materials.
- Try to brush items rather than spraying if possible.
- Never use aerosol media in the classroom. Use the spray booths provided.
- Avoid inhaling pigment powder.
- Turpentine and mineral spirits are *prohibited* in the studio. Gamsol is provided by the area.
- Keep your solvent container covered while painting.
- Solvent washes are strongly discouraged.

- Reuse Gamsol by allowing sediment to settle in jar.
- Brush washing primarily takes place at your station with a jar, brush caddy, Gamsol, and paper towel. This assures as little paint as possible will go down the sink.
- Store all flammables in the flammable cabinet. Keep flammable cabinet always closed.
- Wear closed-toed shoes
- Tie long hair back

3. Links

<http://www.utrechtart.com/MSDS-Sheets-g26t0.utrecht>

<http://www.ci.tucson.az.us/arthazards/paint3.html>

<http://web.princeton.edu/sites/ehs/artsafety/sec10.htm>

<http://www.chicagoartistsresource.org/node/9279>

<http://www.library.wvu.edu/ref/subguides/art/arthazards.html>

4. Area Rules

All users of the studio classrooms are expected to follow studio area rules at all times. If you have any questions, ask your instructor.

- In case of emergency, call campus police at (940) 565-3000 or call 911
- File an incident report (forms may be found in the CVAD H&S Handbook and in the main office) within 48 hours of the event.
- Follow all CVAD Health and Safety handbook guidelines (the handbook should be reviewed by your instructor and can be found here: <https://art.unt.edu/healthandsafety>).
- Follow the CVAD Waste Management Chart in the classroom and other health & safety guidelines posted.
- Respect the workspace and your fellow classmates.
- Leave the space cleaner than you found it.
 - -Clean up and organize your surroundings.
 - -Throw away any trash (whether it's yours or not).
 - -Wipe down your easel, tabouret, and floor.
 - -Wipe down sinks at the end of class.
- Respect other's work. Do not use or move other students' work/materials.
- No food, drink, or alcohol allowed in the studio
- Practice best practices for material handling. If you have questions about a material, ask your instructor for guidance.
- Do not spray any aerosols in any CVAD classroom/studio/doorway or exterior wall/floor. Use the spray booths provided.
- Familiarize yourself with the eyewash station
- Razor blades, X-Acto blades and any other small sharp refuse goes in the sharps container at SAA station.
- Do not remove/borrow furniture from rooms without permission from faculty or D&P coordinator.
- Do not prop classroom doors. Doors must remain closed for the building hvac and ventilation work properly.
- Do not create "daisy chains" with multiple electric cords.
- Absolutely no paint, solvents, or hazardous materials down sinks.
- Store all flammables in the flammable cabinet. Keep flammable cabinet closed at all times.
- First aid kits are found in each studio. Notify your instructor or area technician if supplies are low.

- Report any safety issues immediately to your instructor or area technician.
- All courses must engage in an end of the semester clean up.
- Theft will not be tolerated.
- Follow the **CVAD CONTAINER POLICY** (see below)
-

There are 3 types of labels used in CVAD.

All containers must have a label identifying the contents at all times.

UNIVERSAL LABELS (while chemical is in use):

All secondary/satellite containers for hazardous materials (or what might be perceived as hazardous - i.e. watered-down gesso, graphite solutions, satellite containers of solvents, powders, spray paints, fixatives, oils, solvents) must be marked with content, your name and the date opened. All unmarked containers will be disposed of with no notice. Labels can be found in the studios. All containers must be marked with your name, contents and date opened.

UNIVERSAL WASTE LABELS (when material is designated as waste):

All containers solely containing a universal waste must have a universal waste label identifying the contents as "Universal Waste - (type of universal waste)" that are designated as waste for proper disposal. The label must also include the date the first item of universal waste entered the container.

HAZARDOUS WASTE LABELS

All hazardous waste containers must have a label identifying the contents as hazardous.

Labels should include all constituents in the waste mixture as well as an approximate percentage of the total for that item. All constituents should equal 100%.

CVAD 4th FLOOR WOOD SHOP

Hours of Woodshop operation are (subject to change): Monday-Friday 9-5pm

Safety orientation takes about 15 minutes. Students are required to go through safety orientation prior to using the general access woodshop. After attending an orientation, the student will have swipe access during open hours (this will be different this term—see above). For more details, please contact Lindsey Bass at Lindsey.Bass@unt.edu

END OF TERM PAINTING ROOM CLEAN UP Students should attend and participate in studio clean up on the last day of class. You are responsible for cleaning your work area, your storage area, your assigned palette, and your hazardous materials area (inside the chemical cabinet). You are to remove on this day all stored work and materials from both your storage cubby and your rented locker. Gamsol and Silcoils will be recycled on this day.

DEADLINE to Remove ALL STUDENT SUPPLIES AND STORED WORK: DECEMBER 12th FRIDAY at NOON.

Any artwork or materials left after this time will be permanently removed. There are no exceptions to this deadline. Please take your work home after the final critique.

ACADEMIC SUPPORT & STUDENT SERVICES

STUDENT SUPPORT SERVICES

Mental Health

UNT provides mental health resources to students to help ensure there are numerous outlets to turn to that wholeheartedly care for and are there for students in need, regardless of the nature of an issue or its severity. Listed below are several resources on campus that can support your academic success and mental well-being:

- [Student Health and Wellness Center](https://studentaffairs.unt.edu/student-health-and-wellness-center) (<https://studentaffairs.unt.edu/student-health-and-wellness-center>)
- [Counseling and Testing Services](https://studentaffairs.unt.edu/counseling-and-testing-services) (<https://studentaffairs.unt.edu/counseling-and-testing-services>)
- [UNT Care Team](https://studentaffairs.unt.edu/care) (<https://studentaffairs.unt.edu/care>)
- [UNT Psychiatric Services](https://studentaffairs.unt.edu/student-health-and-wellness-center/services/psychiatry) (<https://studentaffairs.unt.edu/student-health-and-wellness-center/services/psychiatry>)
- [Individual Counseling](https://studentaffairs.unt.edu/counseling-and-testing-services/services/individual-counseling) (<https://studentaffairs.unt.edu/counseling-and-testing-services/services/individual-counseling>)

Chosen Names

A chosen name is a name that a person goes by that may or may not match their legal name. If you have a chosen name that is different from your legal name and would like that to be used in class, please let the instructor know. Below is a list of resources for updating your chosen name at UNT.

- [UNT Records](#)
- [UNT ID Card](#)
- [UNT Email Address](#)
- [Legal Name](#)

**UNT eUIDs cannot be changed at this time. The collaborating offices are working on a process to make this option accessible to UNT community members.*

Pronouns

Pronouns (she/her, they/them, he/him, etc.) are a public way for people to address you, much like your name, and can be shared with a name when making an introduction, both virtually and in-person. Just as we ask and don't assume someone's name, we should also ask and not assume someone's pronouns.

You can [add your pronouns to your Canvas account](#) so that they follow your name when posting to discussion boards, submitting assignments, etc.

Below is a list of additional resources regarding pronouns and their usage:

- [What are pronouns and why are they important?](#)
- [How do I use pronouns?](#)
- [How do I share my pronouns?](#)
- [How do I ask for another person's pronouns?](#)
- [How do I correct myself or others when the wrong pronoun is used?](#)

Additional Student Support Services

- [Registrar](https://registrar.unt.edu/registration) (<https://registrar.unt.edu/registration>)
- [Financial Aid](https://financialaid.unt.edu/) (<https://financialaid.unt.edu/>)

- Student Legal Services (<https://studentaffairs.unt.edu/student-legal-services>)
- Career Center (<https://studentaffairs.unt.edu/career-center>)
- Multicultural Center (<https://edo.unt.edu/multicultural-center>)
- Counseling and Testing Services (<https://studentaffairs.unt.edu/counseling-and-testing-services>)
- Pride Alliance (<https://edo.unt.edu/pridealliance>)
- UNT Food Pantry (<https://deanofstudents.unt.edu/resources/food-pantry>)

ACADEMIC SUPPORT SERVICES

- Academic Resource Center (<https://clear.unt.edu/canvas/student-resources>)
- Academic Success Center (<https://success.unt.edu/asc>)
- UNT Libraries (<https://library.unt.edu/>)
- Writing Lab (<http://writingcenter.unt.edu/>)

ASTU: 3206 Themes, Variations, Forms/ Pawlowicz Supply List

Each student will have choices for what materials will be best suited for their ideas. Please bring all your past painting supplies to class. I will advise and recommend best and most economic materials for exploration. I recommend collecting several small-scale formats(series) for each project. Your best small-scale studies will be enlarged onto heavy paper or stretched canvas format.

Please have drawing materials for 1st class: sketchbook, pencils, and water-based drawing paper, gesso, and cardboard 9"x12"

See below for possible materials (You do not need to buy all of these options)

- 9"x12" Sketchbook, supports to paint/ draw etc. on (minimum size 18x24), acrylic paints or oil paints, appropriate brushes, container for water, gamsol (if needed), computer device for research
- 18"x24" Drawing Paper Strathmore or Related Brand 80lb
- Multi-Media Large Format Paper, Bristol Paper, Rives BFK paper (equal to or better quality)
- 2 ft by 3ft Masonite Drawing Board to support paper on easel (Please buy your own)
- Blue paper towels and cotton rags
- Paper or glass palette (Intermediate students need to buy their own palettes)
- Scrapers
- Assorted drawing media, drawing clips, pencil sharpener
- Apron
- Canvas – unprimed cotton, 10 or 12 oz.
- stretchers
- Masonite or plywood panels
- Wood Glue
- Glue sticks for collage studies
- Scissors/Utility Knife
- Painters Tape: 2 inch
- Gesso
- Gesso brush – Your choice, 2" house brush recommended (May use high density foam roller)
- Water Mister
- Palette Knife
- Brushes: a range of small to medium and several large
- Round #4, #8 Flat #2, #6, #10, #12 (Make sure your largest brush is at least 1 inch wide.) Filbert or larger round (optional....can provide a diversity of brushstrokes based on personal preference)
- Remaining of your choice to fill out your brush selection (optional)
- Acrylic and oil colors - titanium white, ivory black, cadmium yellow light (hue), cadmium yellow medium(hue), yellow ochre, raw sienna, burnt sienna, burnt umber, raw umber, alizarin crimson, cadmium red (hue), cadmium red light (hue), cadmium orange

(hue), dioxazine purple, ultramarine blue, cerulean blue hue, permanent green or viridian green

- (Golden or Liquitex recommended)
- (Variety of each color is recommended. I also suggest buying large size of white)
- Liquitex Gloss Medium and Airbrush Medium
- Oil colors - Same color requirements as above
- (Gamblin or Windsor & Newton recommended)
- Oil paint mediums - Liquin or Gamblin's galkyd/ Alkyd Mediums
- Acrylic Paint Mediums (of your choice)
- Walnut oil, Linseed oil, Stand oil, etc.
- Oil paint thinners—GAMSOL
- Cotton Rags
- Containers for water and other mediums
- Rubber Gloves
- Laptop or tablet for research
- Surfaces to draw and paint on (Paper, Canvas, Panel, sculpture, non-traditional media)
- Make your own medium: Gamsol Linseed or Walnut Oil (2:1 Oil to Thinner)

PERMISSION TO USE STUDENT ARTWORK

We would like to use your work to spread the news about the amazing art made at CVAD! Please help us put your talent on display by allowing us to photograph and exhibit your art on CVAD's social media, websites and paper advertising. Thank you!

I hereby grant permission to UNT and CVAD to use, copy, reproduce, publish, distribute or display any and all works created in my classes while at UNT. Additionally, I consent to the use of my name to coincide with images of my artwork.

1. Scope of Permission. This permission extends to the use of the described work and images of such work: (1) for academic purposes in order to demonstrate examples of student work to current and future UNT students; (2) for public display in the galleries or on the campus of the UNT or on the UNT website; (3) for promotional materials created by UNT in all forms of media now known or later developed, including but not limited to exhibition catalogues, direct mail, websites, advertising, social media, and classroom presentations. My permission is on-going, but can be revoked by giving the professor of record for this course written notice of my wish to revoke permission and use of any images of my artwork. UNT will have three months from the date of my notice to stop all use agreed with this permission.

2. Certificate of Ownership. I am the owner of all work submitted and the work is not subject to any restriction that would prevent its use consistent with this permission. All aspects of the work are original to me and have not been copied. I understand that as owner of the work I have the right to control all reproduction, copying and use of the work in accordance with U.S. copyright laws.

3. Privacy Release. I hereby authorize and consent to the release, maintenance and display of my name if necessary and any other personally identifiable information that I have provided in connection with the work and its use described in this Agreement.

4. Signature. By signing below I hereby grant the permissions indicated above. I understand that this grant of permission relates only to the use of the described work. This is not an exclusive right and I may sell, give or otherwise transfer the rights to such work to others on a non-exclusive or exclusive basis. However, in the event that I do sell, give or otherwise transfer ownership or the exclusive right to use my work to another party, I will notify UNT immediately in writing through the professor of record for this course. UNT will have three months from the date of my notice to stop all use in accordance with this permission.

Printed name: _____

Signature: _____

Date: _____

Name of Course: _____

STUDENT ACKNOWLEDGEMENT*

Provide a “tear off” or separate page with a place for the student(s) to sign a declaration of understanding and agreement with the above syllabus provisions and risk factor. Or similarly, create a required quiz in Canvas/Blackboard.

I _____ (print your full name)
 acknowledge that I have read the course syllabus. I understand the course structure, grading and attendance policies. I hereby agree to the syllabus and its provisions.

Course number and section		Risk Rating
Student phone #, e-mail address (print)	Signature	Date
Faculty Name	Signature	Date