

HMGT 2850: Introduction to Agritourism

Instructor Contact

Name: Dr. Birendra KC

Office Location: 343E, Chilton Hall

Phone Number: 940-565-4551

Office Hours: By appointment only (via zoom)

Email: birendra.kc@unt.edu

Communication Expectations: The primary form of communication is email and Canvas messaging. You are expected to check Canvas on a regular basis. I strongly recommend you check your student email (e.g., denton.northtexas@my.unt.edu) on a regular basis as well. All the announcements will be sent via Canvas. Make sure to turn on the notification to get the updates on your email. For student queries and concerns, you can expect to receive a response from the instructor within 48 hours. You can expect to receive the assignment grades and feedback within a week of the due date.

Course Description

This course covers the foundational concepts of agritourism, including entrepreneurial engagement in agritourism and the agritourism sector's connection to sustainability as it relates to economic, socio-cultural, and environmental pillars. This course will also help students to understand the relevance of the agritourism sector to components of the hospitality and tourism industry, as well as its relevance to policy and planning.

Course Structure

This is a 5-week long online course. There are 5 modules in total (one module per week). Each module contains detailed information on readings and other supplementary materials covered (i.e., videos, journal articles, short technical reports, etc.). Modules are created to assess the learning objectives of the course. Learning outcomes will be assessed via quizzes, an opinion discussion, written assignments, and the exam. Online quizzes and the exam are open book/note and allow two attempts.

Course Prerequisites or Other Restrictions

There are no prerequisites for the course.

Program Learning outcomes

1. Students will develop appropriate strategies for reaching their career goals in the global hospitality and tourism fields.
2. Students will develop analytical and quantitative skills enhanced by information technology to support smart business decisions in the Hospitality and Tourism Industry.
3. Students will integrate hospitality and tourism business principles and current trends to lead in diverse, collaborative, and global environments.
4. Students will apply innovative and imaginative methods to Hospitality and Tourism businesses utilizing ethical and sustainable practices.
5. Students will demonstrate effective and efficient communication skills in all settings.

Course Objectives

By the end of this course, students will be able to:

- Understand the prospects of the agritourism business and the agritourism sector (PLO 1, PLO 3, PLO 5)
- Understand the entrepreneurial climate in the agritourism sector (PLO 1, PLO 3, PLO 5)
- Understand the agritourism sector within the sustainability framework (economic, socio-cultural, and environmental pillars) (PLO 1, PLO 3, PLO 5)
- Recognize the relevance of the agritourism sector within the hospitality and tourism industry (PLO 1, PLO 3, PLO 5)
- Understand the role of policy and planning in promoting sustainable development of the agritourism sector (PLO 3, PLO 5)

Materials

- There is no required textbook for this course.

Technical Requirements & Skills

Minimum Technology Requirements

Provide a list of the minimum technology requirements for students, such as:

- Computer
- Reliable internet access
- Speakers
- Microphone
- Plug-ins
- Microsoft Office Suite
- [Canvas Technical Requirements](https://clear.unt.edu/supported-technologies/canvas/requirements) (https://clear.unt.edu/supported-technologies/canvas/requirements)

Computer Skills & Digital Literacy

Provide a list of course-specific technical skills learners must have to succeed in the course, such as:

- Using Canvas
- Using email with attachments
- Uploading attachments to Canvas
- Taking online quizzes and exams on Canvas
- Posting discussions/comments/replies on Canvas

Rules of Engagement

Rules of engagement refer to the way students are expected to interact with each other and with their instructors online. Here are some general guidelines:

- Treat your instructor and classmates with respect in email or any other communication.
- Always use your professors' proper title: Dr. or Prof.
- Unless specifically invited, don't refer to your instructor by first name.
- Use clear and concise language.
- Remember that all college level communication should have correct spelling and grammar (this includes discussion boards).

- Avoid slang terms such as “wassup?” and texting abbreviations such as “u” instead of “you.”
- Use standard fonts such as Times new Roman and use a size 12-point font
- Avoid using the caps lock feature AS IT CAN BE INTERPRETTED AS YELLING.
- Limit and possibly avoid the use of emoticons like :) or ☺.
- Be cautious when using humor or sarcasm as tone is sometimes lost in an email or discussion post and your message might be taken seriously or sound offensive.
- Be careful with personal information (both yours and other’s).
- Do not send confidential information via e-mail

See these [Engagement Guidelines](https://clear.unt.edu/online-communication-tips) (https://clear.unt.edu/online-communication-tips) for more information.

Getting Help

Technical Assistance

Part of working in the online environment involves dealing with the inconveniences and frustration that can arise when technology breaks down or does not perform as expected. Here at UNT we have a Student Help Desk that you can contact for help with Canvas or other technology issues.

UIT Help Desk: <http://www.unt.edu/helpdesk/index.htm>

Email: helpdesk@unt.edu

Phone: 940-565-2324

In Person: Sage Hall, Room 130

Walk-In Availability: 8am-9pm

Telephone Availability:

- Sunday: noon-midnight
- Monday-Thursday: 8am-midnight
- Friday: 8am-8pm
- Saturday: 9am-5pm

Laptop Checkout: 8am-7pm

For additional support, visit [Canvas Technical Help](https://community.canvaslms.com/docs/DOC-10554-4212710328) (https://community.canvaslms.com/docs/DOC-10554-4212710328)

Student Support Services

UNT provides mental health resources to students to help ensure there are numerous outlets to turn to that wholeheartedly care for and are there for students in need, regardless of the nature of an issue or its severity. Listed below are several resources on campus that can support your academic success and mental well-being:

- [Student Health and Wellness Center](https://studentaffairs.unt.edu/student-health-and-wellness-center) (https://studentaffairs.unt.edu/student-health-and-wellness-center)
- [Counseling and Testing Services](https://studentaffairs.unt.edu/counseling-and-testing-services) (https://studentaffairs.unt.edu/counseling-and-testing-services)
- [UNT Care Team](https://studentaffairs.unt.edu/care) (https://studentaffairs.unt.edu/care)
- [UNT Psychiatric Services](https://studentaffairs.unt.edu/student-health-and-wellness-center/services/psychiatry) (https://studentaffairs.unt.edu/student-health-and-wellness-center/services/psychiatry)
- [Individual Counseling](https://studentaffairs.unt.edu/counseling-and-testing-services/services/individual-counseling) (https://studentaffairs.unt.edu/counseling-and-testing-services/services/individual-counseling)

Other student support services offered by UNT include

- [Registrar](https://registrar.unt.edu/registration) (https://registrar.unt.edu/registration)
- [Financial Aid](https://financialaid.unt.edu/) (https://financialaid.unt.edu/)
- [Student Legal Services](https://studentaffairs.unt.edu/student-legal-services) (https://studentaffairs.unt.edu/student-legal-services)
- [Career Center](https://studentaffairs.unt.edu/career-center) (https://studentaffairs.unt.edu/career-center)
- [Counseling and Testing Services](https://studentaffairs.unt.edu/counseling-and-testing-services) (https://studentaffairs.unt.edu/counseling-and-testing-services)
- [UNT Food Pantry](https://deanofstudents.unt.edu/resources/food-pantry) (https://deanofstudents.unt.edu/resources/food-pantry)

Academic Support Services

- [Academic Resource Center](https://clear.unt.edu/canvas/student-resources) (https://clear.unt.edu/canvas/student-resources)
- [Academic Success Center](https://success.unt.edu/asc) (https://success.unt.edu/asc)
- [UNT Libraries](https://library.unt.edu/) (https://library.unt.edu/)
- [Writing Lab](http://writingcenter.unt.edu/) (http://writingcenter.unt.edu/)
- [MathLab](https://math.unt.edu/mathlab) (https://math.unt.edu/mathlab)

Course Requirements

Self-Introduction

Introduce yourself in 150-200 words. The purpose of the activity is to understand your interest in agritourism as well as your agritourism-related experience. In this process, you will get to know your fellow classmates, which is an avenue for you to connect with each other throughout the coursework. This assignment is worth 30 points. A guideline for this assignment will be available on Canvas.

Travel Bucket List for Agritourism

We always have a travel bucket list. This assignment delves into your own travel bucket list as it relates to agritourism. There are many agritourism destinations around the world; you will get to pick your own bucket list and share it with the class. This assignment is worth 30 points. A guideline for this assignment will be available on Canvas.

Exam

There is only one final exam. It is a comprehensive exam and will cover the materials from 5 modules. The exam will consist of 90 questions (multiple choice and true or false) worth 180 points (2 points/question). You will have 120 minutes to complete the exam. Exams are open book/note, and two attempts are allowed. There will be no make-up opportunities for the missed exam.

Quizzes

There are 6 quizzes covering the syllabus and modules 1 through 5. Each quiz will have 10 questions and be worth a total of 20 points (2 points/question). You will have 15 minutes to complete each quiz. A link for the quiz will be available at the end of each module for you to take. Quizzes are open book/note, and two attempts are allowed. There will be no make-up opportunities for missed quizzes.

Opinion Discussion

The opinion discussion will allow students to share their evaluation of Strengths, Weaknesses, Opportunities, and Threats (SWOT) factors for the agritourism sector. This assignment is worth 60 points. A guideline for this assignment will be available on Canvas.

Agritourism Diary

This is a written assignment about your desired agritourism venture. It is worth 60 points. A guideline for this assignment will be available on Canvas.

Global Agritourism Quizzes (Bonus Quizzes)

Five quizzes (1 quiz/module) will cover agritourism-related facts and knowledge from a global perspective. Each quiz will have five questions, and you will have 5 minutes to take the quiz. Two attempts will be allowed. There will be no make-up opportunities for missed quizzes.

Essay Paper

This is a 2-page-long (at least 1000 words) summary that shows your knowledge about the course content and should reflect that you fulfilled the learning objectives. This assignment is due at the end of the course. A guideline for this assignment will be available on Canvas.

All written assignments MUST follow this format:

- Typeface: Times New Roman
- Font: 12
- Margins: 1" on each side (and top and bottom)
- Spacing: 1.5
- Headings: Bold and/or underlined
- Ink Color: Black

***Note: There are no make-up opportunities available for any of the missed assignments (and late submissions will not be graded)**

<i>Assignment</i>	<i>Points Possible</i>	<i>Percentage of Final Grade</i>
<i>Self-Introduction</i> ▪ <i>1 post @30 points</i>	<i>30 points</i>	<i>5%</i>
<i>Travel Bucket List for Agritourism</i> <i>1 post @30 points</i>	<i>30 points</i>	<i>5%</i>
<i>Quizzes</i> ▪ <i>6 quizzes @20 points</i>	<i>120 points</i>	<i>20%</i>
<i>Opinion Discussion</i> ▪ <i>1 post @60 points</i>	<i>60 points</i>	<i>10%</i>
<i>Agritourism Diary</i> ▪ <i>1 submission @60 points</i>	<i>60 points</i>	<i>10%</i>
<i>Final Exam</i>	<i>180 points</i>	<i>30%</i>
<i>Essay Paper</i> ▪ <i>1 submission @120 points</i>	<i>120 points</i>	<i>20%</i>
<i>Total Points Possible</i>	<i>600 points</i>	<i>100%</i>

Grading

A = 90-100%

B = 80-89.9%

C = 70-79.9%

D = 60-69.9%

F = 50-59.9%

Course Evaluation

Student Perceptions of Teaching (SPOT) is the student evaluation system for UNT and allows students the ability to confidentially provide constructive feedback to their instructor and department to improve the quality of student experiences in the course.

Course Policies

Attendance Policy

Visit the [University of North Texas' Attendance Policy](http://policy.unt.edu/policy/15-2-) (<http://policy.unt.edu/policy/15-2->) to learn more.

Syllabus Change Policy

The instructor reserves the right to revise this syllabus and list of requirements when, in his judgment, such revision will benefit the advancement of the course goals and objectives. Students will be notified should there be any change in the course syllabus, course information, or due dates.

UNT Policies

Academic Integrity Policy

Academic Integrity Standards and Consequences. According to UNT Policy 06.003, Student Academic Integrity, academic dishonesty occurs when students engage in behaviors including, but not limited to cheating, fabrication, facilitating academic dishonesty, forgery, plagiarism, and sabotage. A finding of academic dishonesty may result in a range of academic penalties or sanctions ranging from admonition to expulsion from the University. [Insert specific sanction or academic penalty for specific academic integrity violation.]

ADA Policy

UNT makes reasonable academic accommodation for students with disabilities. Students seeking accommodation must first register with the Office of Disability Accommodation (ODA) to verify their eligibility. If a disability is verified, the ODA will provide a student with an accommodation letter to be delivered to faculty to begin a private discussion regarding one's specific course needs. Students may request accommodations at any time; however, ODA notices of accommodation should be provided as early as possible in the semester to avoid any delay in implementation. Note that students must obtain a new letter of accommodation for every semester and must meet with each faculty member prior to implementation in each class. For additional information see the [ODA website](https://disability.unt.edu/) (<https://disability.unt.edu/>).

Emergency Notification & Procedures

UNT uses a system called Eagle Alert to quickly notify students with critical information in the event of an emergency (i.e., severe weather, campus closing, and health and public safety emergencies like chemical spills, fires, or violence). In the event of a university closure, please refer to Blackboard for contingency plans for covering course materials.

Retention of Student Records

Student records pertaining to this course are maintained in a secure location by the instructor of record. All records such as exams, answer sheets (with keys), and written papers submitted during the duration of the course are kept for at least one calendar year after course completion. Course work completed via the Blackboard online system, including grading information and comments, is also stored in a safe electronic environment for one year. Students have the right to view their individual record; however, information about student's records will not be divulged to other individuals without proper written consent. Students

are encouraged to review the Public Information Policy and the Family Educational Rights and Privacy Act (FERPA) laws and the University's policy. See UNT Policy 10.10, Records Management and Retention for additional information.

Acceptable Student Behavior

Student behavior that interferes with an instructor's ability to conduct a class or other students' opportunity to learn is unacceptable and disruptive and will not be tolerated in any instructional forum at UNT. Students engaging in unacceptable behavior will be directed to leave the classroom and the instructor may refer the student to the Dean of Students to consider whether the student's conduct violated the Code of Student Conduct. The University's expectations for student conduct apply to all instructional forums, including University and electronic classroom, labs, discussion groups, field trips, etc. Visit UNT's [Code of Student Conduct](https://deanofstudents.unt.edu/conduct) (https://deanofstudents.unt.edu/conduct) to learn more.

Access to Information - Eagle Connect

Students' access point for business and academic services at UNT is located at: my.unt.edu. All official communication from the University will be delivered to a student's Eagle Connect account. For more information, please visit the website that explains Eagle Connect and how to forward e-mail [Eagle Connect](https://it.unt.edu/eagleconnect) (https://it.unt.edu/eagleconnect).

Student Evaluation Administration Dates

Student feedback is important and an essential part of participation in this course. The student evaluation of instruction is a requirement for all organized classes at UNT. The survey will be made available during weeks 13, 14 and 15 [insert administration dates] of the long semesters to provide students with an opportunity to evaluate how this course is taught. Students will receive an email from "UNT SPOT Course Evaluations via IASystem Notification" (no-reply@iasystem.org) with the survey link. Students should look for the email in their UNT email inbox. Simply click on the link and complete the survey. Once students complete the survey, they will receive a confirmation email that the survey has been submitted. For additional information, please visit the [SPOT website](http://spot.unt.edu/) (http://spot.unt.edu/) or email spot@unt.edu.

Sexual Assault Prevention

UNT is committed to providing a safe learning environment free of all forms of sexual misconduct, including sexual harassment sexual assault, domestic violence, dating violence, and stalking. Federal laws (Title IX and the Violence Against Women Act) and UNT policies prohibit discrimination on the basis of sex, and therefore prohibit sexual misconduct. If you or someone you know is experiencing sexual harassment, relationship violence, stalking, and/or sexual assault, there are campus resources available to provide support and assistance. UNT's Survivor Advocates can assist a student who has been impacted by violence by filing protective orders, completing crime victim's compensation applications, contacting professors for absences related to an assault, working with housing to facilitate a room change where appropriate, and connecting students to other resources available both on and off campus. The Survivor Advocates can be reached at SurvivorAdvocate@unt.edu or by calling the Dean of Students Office at 940-565- 2648. Additionally, alleged sexual misconduct can be non-confidentially reported to the Title IX Coordinator at oeo@unt.edu or at (940) 565 2759.

Important Notice for F-1 Students taking Distance Education Courses

Federal Regulation

To read detailed Immigration and Customs Enforcement regulations for F-1 students taking online courses, please go to the [Electronic Code of Federal Regulations website](http://www.ecfr.gov/) (http://www.ecfr.gov/). The

specific portion concerning distance education courses is located at Title 8 CFR 214.2 Paragraph (f)(6)(i)(G).

The paragraph reads:

(G) For F-1 students enrolled in classes for credit or classroom hours, no more than the equivalent of one class or three credits per session, term, semester, trimester, or quarter may be counted toward the full course of study requirement if the class is taken on-line or through distance education and does not require the student's physical attendance for classes, examination or other purposes integral to completion of the class. An on-line or distance education course is a course that is offered principally through the use of television, audio, or computer transmission including open broadcast, closed circuit, cable, microwave, or satellite, audio conferencing, or computer conferencing. If the F-1 student's course of study is in a language study program, no on-line or distance education classes may be considered to count toward a student's full course of study requirement.

University of North Texas Compliance

To comply with immigration regulations, an F-1 visa holder within the United States may need to engage in an on-campus experiential component for this course. This component (which must be approved in advance by the instructor) can include activities such as taking an on-campus exam, participating in an on-campus lecture or lab activity, or other on-campus experience integral to the completion of this course.

If such an on-campus activity is required, it is the student's responsibility to do the following:

- (1) Submit a written request to the instructor for an on-campus experiential component within one week of the start of the course.
- (2) Ensure that the activity on campus takes place and the instructor documents it in writing with a notice sent to the International Student and Scholar Services Office. ISSS has a form available that you may use for this purpose.

Because the decision may have serious immigration consequences, if an F-1 student is unsure about his or her need to participate in an on-campus experiential component for this course, s/he should contact the UNT International Student and Scholar Services Office (telephone 940-565-2195 or email internationaladvising@unt.edu) to get clarification before the one-week deadline.

Student Verification

UNT takes measures to protect the integrity of educational credentials awarded to students enrolled in distance education courses by verifying student identity, protecting student privacy, and notifying students of any special meeting times/locations or additional charges associated with student identity verification in distance education courses.

See [UNT Policy 07-002 Student Identity Verification, Privacy, and Notification and Distance Education Courses](https://policy.unt.edu/policy/07-002) (<https://policy.unt.edu/policy/07-002>).

Use of Student Work

A student owns the copyright for all work (e.g. software, photographs, reports, presentations, and email postings) he or she creates within a class and the University is not entitled to use any student work without the student's permission unless all the following criteria are met:

- The work is used only once.
- The work is not used in its entirety.

- Use of the work does not affect any potential profits from the work.
- The student is not identified.
- The work is identified as student work.

If the use of the work does not meet all the above criteria, then the University office or department using the work must obtain the student's written permission.

Download the UNT System Permission, Waiver and Release Form

Transmission and Recording of Student Images in Electronically Delivered Courses

1. No permission is needed from a student for his or her image or voice to be transmitted live via videoconference or streaming media, but all students should be informed when courses are to be conducted using either method of delivery.
2. In the event an instructor records student presentations, he or she must obtain permission from the student using a signed release in order to use the recording for future classes in accordance with the Use of Student-Created Work guidelines above.
3. Instructors who video-record their class lectures with the intention of re-using some or all of recordings for future class offerings must notify students on the course syllabus if students' images may appear on video. Instructors are also advised to provide accommodation for students who do not wish to appear in class recordings.

Example: This course employs lecture capture technology to record class sessions. Students may occasionally appear on video. The lecture recordings will be available to you for study purposes and may also be reused in future course offerings.

No notification is needed if only audio and slide capture is used or if the video only records the instructor's image. However, the instructor is encouraged to let students know the recordings will be available to them for study purposes.

Class Schedule:

Date	Module	Topics	Remarks
5/18-5/22	Module 1	<ul style="list-style-type: none"> ▪ Syllabus ▪ Introduction to agritourism (Definition, trends, and scope) 	<p>Syllabus Quiz (Due 5/22)</p> <p>Self-Introduction (Due 5/22)</p> <p>Quiz 1 (Due 5/22)</p> <p>Global Agritourism Quiz 1 (Due 5/22)</p>
5/25-5/39	Module 2	<ul style="list-style-type: none"> ▪ Entrepreneurial engagement in agritourism 	<p>Travel Bucket List for Agritourism (Due 5/29)</p> <p>Quiz 2 (Due 5/29)</p> <p>Global Agritourism Quiz 2 (Due 5/29)</p>
6/1-6/5	Module 3	<ul style="list-style-type: none"> ▪ Agritourism and its relevance to the hospitality and tourism industry 	<p>Agritourism Diary (Due 6/5)</p> <p>Quiz 3 (Due 6/5)</p> <p>Global Agritourism Quiz 3 (Due 6/5)</p>
6/8-6/12	Module 4	<ul style="list-style-type: none"> ▪ Agritourism and sustainability 	<p>Opinion Discussion (Due 6/12)</p> <p>Quiz 4 (Due 6/12)</p> <p>Global Agritourism Quiz 4 (Due 6/12)</p>
6/15-6/19	Module 5	<ul style="list-style-type: none"> ▪ Policy and planning in agritourism 	<p>Essay Paper (Due 6/19)</p> <p>Quiz 5 (Due 6/19)</p> <p>Final Exam (Due 6/19)</p> <p>Global Agritourism Quiz 5 (Due 6/19)</p>

*Note: All the due dates for quizzes and exams apply until 11:59 PM.

College of Merchandising, Hospitality & Tourism

Syllabus Statements

Summer 2026 (All Sessions)

Advising and Degree Progression

Undergraduate Advising

ALL students are expected to meet with their Academic Advisor each semester to update your degree plan and to stay on track for a timely graduation.

- **Advising Contact Information (Chilton Hall 385 – 940.565.4635)**
- **SCHEDULE APPOINTMENTS HERE: appointments.unt.edu**
- **Email: cmhtadvising@unt.edu**

Prerequisites

- Ultimately, it is a student's responsibility to ensure they have met all prerequisites before enrolling in a class.
- A prerequisite is a course or other preparation that must be successfully completed (a grade of C or better) before enrollment in another course. All prerequisites are included in the catalog course descriptions.
- Students that lack prerequisites for a course are not allowed to remain on the course.

Transfer Courses

Any transfer course(s) from another institution must receive *prior approval* from your CMHT Academic Advisor to ensure that the course(s) will be applicable to your degree plan at UNT.

Dropped for Non-payment

- Students will be dropped for nonpayment for enrolled courses, parking fees, schedule change fees, etc. Please check your account daily through the 12th class day to ensure you have not been dropped for non-payment of any amount. It is the student's responsibility to make all payments on time.
- ***Students cannot be reinstated for any reason after the 12th class day regardless of the situation.***

Dropping a Course

- A decision to drop a course may affect your current and future financial aid eligibility. Talk to your academic advisor or Student Financial Aid if you are thinking about dropping a course.

- Speak with the course instructor to discuss any possible options to be successful in the course before dropping.
- Meeting deadlines for dropping a course is the student’s responsibility.
- There are different procedures for dropping a class depending on the time of semester. Please see the instructions for dropping a class here: <https://registrar.unt.edu/registration/dropping-class>

Graduate Advising

- Graduate students should work on their degree plan and discuss their progress with their assigned academic advisor. If you do not know who your academic advisor is, contact your graduate program coordinator.

Financial Aid Requirements

- A student must maintain Satisfactory Academic Progress (SAP) to continue receiving financial aid by maintaining a minimum 2.0 cumulative GPA and successfully completing the required number of credit hours based on total registered hours per semester. Students cannot exceed attempted credit hours above 150% of their required degree plan. If a student does not maintain the required standards, the student may lose financial aid eligibility. Visit <https://financialaid.unt.edu/sap> for more information about financial aid Satisfactory Academic Progress.

What if You Are in Distress?

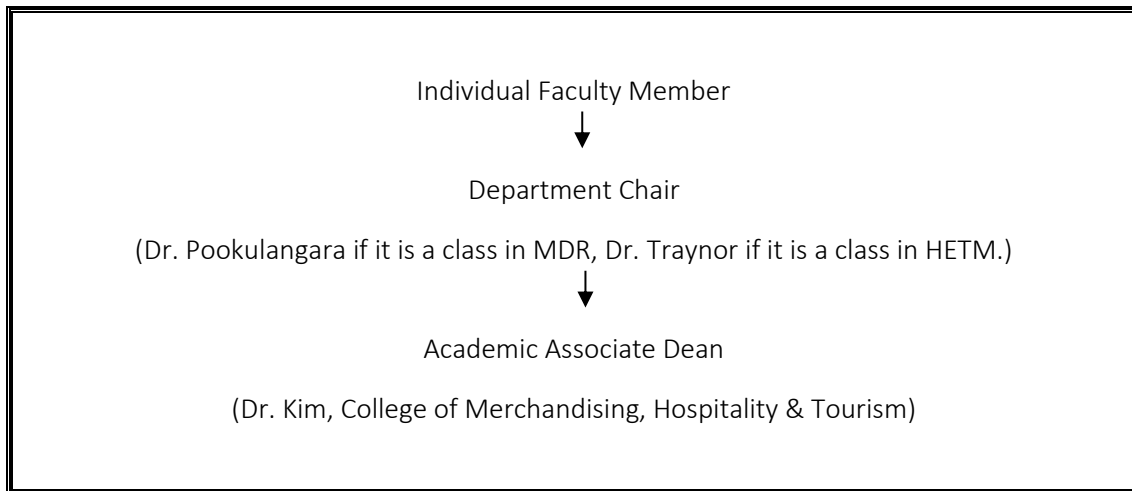
The University has a number of resources that can be useful if you find yourself in need of help. Faculty and advisors can help direct you to resources; please note that any reports of sexual harassment, sexual assault, dating violence, or stalking must be reported to the UNT Dean of Students, per Texas law. Some resources you might consult are:

UNT Police	940-565-3000
Dean of Students	940-565-2648 or 940-565-2039
Counseling and Testing	940-565-2741
Student Health and Wellness Center	940-565-2333
Office of Disability Access	940-565-2333
Housing and Residence Life	940-565-2610
Substance Use and Resource Education Center	940-565-3177
Veterans Center	940-369-8021
Denton County Friends of the Family	940-387-5131
National Suicide Hotline	1-800-273-TALK

Grade and Class Concerns

Do you know who to contact for a course-related issue?

Understanding the academic organizational structure is important when resolving class-related or advising issues. When you need problems resolved, please follow the steps outlined below:



Do You Know the Academic Integrity Policy?

Academic Integrity Standards and Consequences, UNT Policy 06.003.

Academic dishonesty occurs when students engage in behaviors including, but not limited to cheating, fabrication, facilitating academic dishonesty, forgery, plagiarism, and sabotage. A finding of academic dishonesty may result in a range of academic penalties or sanctions ranging from admonition to expulsion from the University.

Academic dishonesty includes, but is not limited to, the use of any unauthorized assistance in taking quizzes, tests, or exams; dependence upon the aid of sources beyond those authorized by the instructor, the acquisition of tests or other material belonging to a faculty member, dual submission of a paper or project, resubmission of a paper or project to a different class without express permission from the instructors, or any other act designed to give a student an unfair advantage. Plagiarism includes the paraphrase or direct quotation of published or unpublished works *without* full and clear acknowledgment of the author/source. Academic dishonesty will bring about disciplinary action, which may include expulsion from the university. This is explained in the UNT Student Handbook. Your teacher should have a syllabus policy describing penalties for academic dishonesty.

Academic Integrity Guidance on GenAI

According to UNT guidelines, “Generative Artificial Intelligence (GenAI) refers to software systems and platforms that create new content, such as text, images, audio or video using generative models. These models identify patterns from large datasets, enabling them to generate data in response to specific prompts, which in many ways can resemble human-created content.” Read the course syllabus carefully to determine the course policy on GenAI use on class assignments, and the consequences of violating such policies.

Throughout the semester, you will or may use specific Generative AI (GenAI) tools for certain assignments, with guidance on responsible use. These assignments help build ethical resilience and GenAI literacy, preparing you for careers in a GenAI-oriented workforce. In accordance with the UNT Honor Code, unauthorized use of GenAI tools is prohibited. Using GenAI content without proper credit or substituting your own work with GenAI undermines the learning process and violates UNT academic integrity policy. If you're unsure whether something is allowed, please seek clarification.

Class Recordings

Your instructor may decide to record lectures and/or class content for students enrolled in this class section to refer to throughout the semester. Class recordings are the intellectual property of the university or instructor and are reserved for use only by students in this class and only for educational purposes. Students may not post or otherwise share the recordings outside the class, or outside the Canvas Learning Management System, in any form. Failing to follow this restriction is a violation of the UNT Code of Student Conduct and could lead to disciplinary action.

Do you meet ALL expectations for being enrolled in a course?

- CMHT students are expected to meet all prerequisites for the courses in which they are registered.
- Students are expected to be respectful of other students, guests, and faculty. Behavior that interferes with an instructor’s ability to conduct a class or other students’ opportunity to learn is unacceptable and will not be tolerated in any instructional forum at UNT.
- Students engaging in unacceptable behavior will be directed to leave the classroom and may be referred to the Dean of Students for possible violation of the Code of Student Conduct.
- UNTs expectations for student conduct apply to all instructional forums, including university and electronic classroom, labs, discussion groups, field trips, etc. The Code of Student Conduct can be found at <https://studentaffairs.unt.edu/dean-of-students>.

The College of Merchandising, Hospitality and Tourism requires that students respect and maintain all university property. Students are accountable through disciplinary action for any intentional damage they cause in classrooms. (e.g., writing on tables). Disruptive behavior is not tolerated (e.g., arriving late, leaving early, sleeping, talking on the phone, texting or game playing, making inappropriate comments, ringing cellular phones/beepers, dressing inappropriately).

Do you require special accommodations?

The University of North Texas and the College of Merchandising, Hospitality and Tourism make reasonable academic accommodation for students with disabilities. Students seeking accommodation must first register with the Office of Disability Access (ODA) to verify their eligibility. If a disability is verified, the ODA will provide you with an accommodation letter to be delivered to faculty to begin a private discussion regarding your specific needs in a course. ODA notices of accommodation should be provided as early as possible in the semester to avoid any delay in implementation. Note that students must obtain a new letter of accommodation for every semester and must meet with each faculty member prior to implementation in each class. Students are strongly encouraged to discuss the accommodation early in the semester during faculty office hours or by appointment. Faculty members have the authority to ask students to discuss such letters during their designated office hours to protect the privacy of the student. For additional information see the Office of Disability Access website at <https://studentaffairs.unt.edu/office-disability-access>. You may also contact them by phone at 940.565.4323.

Are you aware of safety regulations?

Students are urged to use proper safety procedures and guidelines. In lab sessions, students are expected and required to identify and use property safety guidelines in all activities requiring lifting, climbing, walking on slippery surfaces, using equipment and tools, handling chemical solutions and hot and cold products. Students should be aware that the University of North Texas is not liable for injuries incurred while students are participating in class activities. All students are encouraged to secure adequate insurance coverage in the event of accidental injury. Students who do not have insurance coverage should consider obtaining Student Health Insurance for this insurance program. Brochures for this insurance are available in the UNT Health and Wellness Center on campus. Students who are injured during class activities may seek medical attention at the UNT Health and Wellness Center at rates that are reduced compared to other medical facilities. If you have an insurance plan other than Student Health Insurance at UNT, please be sure that your plan covers treatment at this facility. If you choose not to go to the UNT Health and Wellness Center, you may be transported to an emergency room at a local hospital. You are responsible for expenses incurred there.

Career Resources

CMHT Career Coach

For one-on-one help with your resume, cover letter, LinkedIn profile, interview tips/practice or other internship and job-search skills, Mrs. Dee Wilson (Dee.Wilson@unt.edu) is our Career Center Coach. Contact her for an appointment through navigate.unt.edu or drop by her office in Chilton 333.

Career Center

The Career Center is currently located in Sage Hall. They provide *free* business cards, professional portraits, etc. They also host several recruiters throughout the year in various events/information sessions and career fairs. Learn more about their services here: <https://careercenter.unt.edu/>.

Online Job Board and Social Media Sites

- CMHT Careers Group page on LinkedIn. <https://www.linkedin.com/groups/14137002/>. This is a private group that current CMHT students and alumni can request to join.
- Facebook CMHT Careers Group - <https://www.facebook.com/groups/CMHTCareers/>
- Twitter - @UNTCMHT
- Facebook Social Sites - @UNTCMHT and @UNTHTM
- Instagram - [@untcmht](https://www.instagram.com/untcmht)
- UNT Handshake- <https://careercenter.unt.edu/handshake.html>. Handshake provides students access to employment opportunities (FT, PT, Internships, and On Campus student employment), as well as career fairs and other career and professional development events on and off campus.

CMHT Career Expo

The next CMHT Career Expo will be Tuesday, September 22, 10am-1pm in Union 314. The link for students to view information in Handshake is at https://app.joinhandshake.com/career_fairs/a166cfe5-26c4-4cbc-8388-432011ad55b3/student_preview.

If you need to borrow professional clothing to wear, please go to the Diamond Eagle Clothing Closet on the first floor of Crumley Hall. The closet is available by appointment at <https://studentaffairs.unt.edu/desresources/programs/clothing-closet.html> under the “Using the Closet” tab. For any questions, please contact the Diamond Eagle Student Resource Center at DESresources@unt.edu.

CMHT-IT Resources

CMHT-IT Services Student Laptop Checkout Information

The CMHT-IT Services desk located on the 3rd floor of Chilton Hall outside room **386** will have Dell laptops available for checkout for all CMHT students. These laptops and the CMHT-IT Services desk will be available during the following hours:

Monday: 7:30AM – 9:00PM

Tuesday: 7:30AM – 9:00PM

Wednesday: 7:30AM – 9:00PM

Thursday: 7:30AM – 9:00PM

Friday: 7:30AM – 5:00PM

These Dell laptops can be checked out at any point during the above hours and must be returned on the same business day to the CMHT-IT Services personnel. These laptops must remain on campus and will **not** save your data. So be sure to use a USB or email yourself to save your work!

For more information, please stop by the CMHT-IT Services desk in Chilton Hall 386 or give us a call at (940) 565-4227.

UNT Citrix Virtual Lab

UNT Students currently enrolled in a CMHT course have access to the UNT Citrix Virtual Lab. This is useful if your course requires specific software and you need access to the software on your personal machine. You can find more information and installation steps here:

<https://academictechnologies.unt.edu/services/computer-labs/request/remotely-connect-virtual-computer-lab#connect-options>.

The CMHT-IT Services desk can assist you with installing the Citrix Workspace client on your personal machine. Please see above hours of operation for our IT services desk.

Part of working in the online environment involves dealing with the inconveniences and frustration that can arise when technology breaks down or does not perform as expected. Here at UNT we have a Student Help Desk that you can contact for help with Canvas or other technology issues.

UIT Help Desk: [UIT Student Help Desk site](http://www.unt.edu/helpdesk/index.htm) (<http://www.unt.edu/helpdesk/index.htm>)

Email: helpdesk@unt.edu

Phone: 940-565-2324

In Person: Sage Hall, Room 330

Walk-In Availability: 8am-5pm

Telephone Availability:

- Saturday-Sunday: 11am-3pm
- Monday-Thursday: 8am-9pm
- Friday: 8am-5pm

UNT Libraries Laptop Checkout: <https://library.unt.edu/services/laptop-checkout/>

For additional support, visit [Canvas Technical Help](https://community.canvaslms.com/docs/DOC-10554-4212710328)
(<https://community.canvaslms.com/docs/DOC-10554-4212710328>)

Additional Information

Are You An F-1 Visa Holder?

To read detailed Immigration and Customs Enforcement regulations for F-1 students taking online courses, please go to the [Electronic Code of Federal Regulations website](http://www.ecfr.gov/) (<http://www.ecfr.gov/>). The specific portion concerning distance education courses is located at Title 8 CFR 214.2 Paragraph (f)(6)(i)(G).

The paragraph reads:

(G) For F-1 students enrolled in classes for credit or classroom hours, no more than the equivalent of one class or three credits per session, term, semester, trimester, or quarter may be counted toward the full course of study requirement if the class is taken on-line or through distance education and does not require the student's physical attendance for classes, examination or other purposes integral to completion of the class. An on-line or distance education course is a course that is offered principally through the use of television, audio, or computer transmission including open broadcast, closed circuit, cable, microwave, or satellite, audio conferencing, or computer conferencing. If the F-1 student's course of study is in a language study program, no on-line or distance education classes may be considered to count toward a student's full course of study requirement.

University of North Texas Compliance

To comply with immigration regulations, an F-1 visa holder within the United States may need to engage in an on-campus experiential component for this course. This component (which must be approved in advance by the instructor) can include activities such as taking an on-campus exam, participating in an on-campus lecture or lab activity, or other on-campus experience integral to the completion of this course.

If such an on-campus activity is required, it is the student's responsibility to do the following:

(1) Submit a written request to the instructor for an on-campus experiential component within one week of the start of the course.

(2) Ensure that the activity on campus takes place and the instructor documents it in writing with a notice sent to the International Student and Scholar Services Office. ISSS has a form available that you may use for this purpose.

Because the decision may have serious immigration consequences, if an F-1 student is unsure about his or her need to participate in an on-campus experiential component for this course, s/he should contact the UNT International Student and Scholar Services Office (telephone 940-565-2195 or email internationaladvising@unt.edu) to get clarification before the one-week deadline.

Student Code of Conduct

According to the [Code of Student Conduct](#), “The University of North Texas is deeply committed to advancing educational excellence and preparing students to become thoughtful, engaged citizens of a diverse, global community. The University has established the Code of Student Conduct to promote the well-being, honor and dignity of all who live, learn and work in our educational community. The Code of Student Conduct is intended to foster a safe environment conducive to learning and development, as well as to hold students accountable through an educational process that balances the interests of individual students with the interests of the University. Students and student groups are expected to conduct themselves in a manner that demonstrates respect for the rights and property of others and upholds the integrity and values of the University community.”

Feedback and Communications

Image Release

The College actively posts images and descriptions of class and student accomplishments. If you do not want your image posted on the CMHT website and/or social media sites, (1) you should avoid being in group photographs or in photographs taken by your teachers or the IT staff and (2) send an email to jiyoung.kim@unt.edu and request that your name and image not be shared. Dr. Kim will share this information with the IT staff and the faculty who post to social media. Faculty and staff are asked to honor your wishes without question.

If your instructor employs lecture capture technology to record class sessions, students may occasionally appear on video. The recording may be used in future course offerings.

What is SPOT?

The Student Perceptions of Teaching (SPOT) is a requirement for all organized classes at UNT. This short survey at the end of the semester gives students the opportunity to comment on the course. Student feedback is important and is essential as we strive for excellence.

Do you know the date/time of the final exam in this course?

Final exams or other appropriate end of semester evaluations are administered at the designated times during the final week of each long semester and during the specified day of each summer term. Please check the calendar early in the semester to avoid any schedule conflicts. You can find the Final Exam Schedule here: <https://registrar.unt.edu/exams/final-exam-schedule>

Do you know what you may be missing?

Your access point for ALL business and academic services at UNT occurs within the <https://my.unt.edu> site, and EagleConnect is the official method of communication for UNT. If you do not regularly check EagleConnect or forward it to your favorite e-mail account, please do so to learn about job and internship opportunities, CMHT events, scholarships, and other important information. The website that explains EagleConnect and how to forward your email is: <https://it.unt.edu/eagleconnect>.

Do you know what to do in an emergency or UNT closure?

- UNT uses a system called Eagle Alert to quickly notify you with critical information in an event of emergency (i.e., severe weather, campus closing, and health and public safety emergencies like chemical spills, fires, or violence). The system sends voice messages (and text messages upon permission) to the phones of all active faculty staff, and students. Please make certain to update your phone numbers at <https://my.unt.edu>.
- Some helpful emergency preparedness actions include: 1) ensuring you know the evacuation routes and severe weather shelter areas, determining how you will contact family and friends if phones are temporarily unavailable, and identifying where you will go if you need to evacuate the Denton area suddenly.
- In the event of a university closure, your instructor will communicate with you through Canvas regarding assignments, exams, field trips, and other items that may be impacted by the closure.

Sexual Assault Prevention

UNT is committed to providing a safe learning environment free of all forms of sexual misconduct, including sexual harassment sexual assault, domestic violence, dating violence, and stalking. Federal laws (Title IX and the Violence Against Women Act) and UNT policies prohibit discrimination on the basis of

sex, and therefore prohibit sexual misconduct. If you or someone you know is experiencing sexual harassment, relationship violence, stalking, and/or sexual assault, there are campus resources available to provide support and assistance. UNT's Survivor Advocates can assist a student who has been impacted by violence by filing protective orders, completing crime victim's compensation applications, contacting professors for absences related to an assault, working with housing to facilitate a room change where appropriate, and connecting students to other resources available both on and off campus. The Survivor Advocates can be reached at SurvivorAdvocate@unt.edu or by calling the Dean of Students Office at 940-565-2648. Additionally, alleged sexual misconduct can be non-confidentially reported to the Title IX Coordinator at oeo@unt.edu or at (940) 565 2759.

Prohibition of Discrimination, Harassment, and Retaliation (Policy 16.004)

The University of North Texas (UNT) prohibits discrimination and harassment because of race, color, national origin, religion, sex, sexual orientation, gender identity, gender expression, age, disability, genetic information, veteran status, or any other characteristic protected under applicable federal or state law in its application and admission processes; educational programs and activities; employment policies, procedures, and processes; and university facilities. The University takes active measures to prevent such conduct and investigates and takes remedial action when appropriate.

Retention of Student Records

Student records pertaining to this course are maintained in a secure location by the instructor of record. All records such as exams, answer sheets (with keys), and written papers submitted during the duration of the course are kept for at least one calendar year after course completion. Course work completed via the Canvas online system, including grading information and comments, is also stored in a safe electronic environment for one year. Students have the right to view their individual record; however, information about student's records will not be divulged to other individuals without proper written consent. Students are encouraged to review the Public Information Policy and the Family Educational Rights and Privacy Act (FERPA) laws and the University's policy. See UNT Policy 10.10, Records Management and Retention for additional information.