

(3) DAYS OF AUCTIONS

AUCTION #1:

Snappy Apple Prime Orchard Real Estate
Tuesday, December 17 - 6PM

Auction held at English Hills Banquet Facility: 1200 4 Mile Rd. NW, Grand Rapids, MI

AUCTION #2:

L&L Bull Orchard & Farm Equipment
Wednesday, December 18 (Online Auction)

Online Bidding: Begins at 8am & will start closing at 6pm the same day on Orbitbid.com

AUCTION #3:

L&L Bull Prime Orchard Real Estate
Thursday, December 19 - 6PM

Auction held at English Hills Banquet Facility: 1200 4 Mile Rd. NW, Grand Rapids, MI

-
- **Prime High Elevation Orchard Land in Casnovia, MI**
 - **± 559 Acres Total (Selling for 2 Owners)**
 - **Migrant Housing Complexes**
 - **Home with Storage Buildings**
 - **Full Line Up of Orchard & Farm Equipment**

Auctioneer's Note: (3) big days of auctions for 2 local growers. Snappy Apple is downsizing and selling ± 352 Acres. L&L Bull is retiring and selling all their land (± 207 Acres) and their orchard & farm equipment. Outstanding opportunity to buy prime orchard land in a great location for fruit (Casnovia, MI). Don't miss out!

Snappy Apple: Owners

L&L Bull Farms, LLC: Owners

**IEDEMA**
AUCTIONEERING, INC.
LIVE & ONLINE AUCTIONS

601 Gordon Industrial Court, Byron Center, MI 49315
MiedemaAuctioneering.com | 1-800-527-8243



Please note: Online Bidding is available for the live real estate auctions but you must call ahead to register in order to bid online.
Please call Donna at 616-538-0361 by December 10 to register.

AUCTION #1:

Snappy Apple Real Estate

Prime orchard land with high elevation - Located in Muskegon County, Casnovia Twp - Open House: Dec. 10 (1-3pm)



All land sells with no minimums or reserves, except for parcels with houses.



Tuesday, December 17

Auction held at English Hills Banquet Facility @ 6PM

Parcel 1: ± 23.7 Acres Total

NW Corner of Canada & White Roads

- ± 7.3 Acres of young Gala trees
- Balance of land is mostly tillable ground (Corn in 2019)
- Zoned irrigation serviced from Well on Parcel 2

Parcel 2: ± 20 Acres Total

NW Corner of Canada & White Roads

- ± 3.4 Acres of young Gala trees
- Balance mostly tillable (Corn in 2019)
- Zoned irrigation
- 8" Well
- 1/2 mineral rights will transfer to buyer, other 1/2 sold long ago

Parcel 3: ± 90 Acres Total

NW Corner of Hall & Peters Roads

- ± 90 Acres - Tiled
- High elevation
- ± Acres of Varieties: Gala (24), Fuji (1.2), Evenpure (2.2)
- Balance of land mostly is mostly tillable (Corn 2019)
- Home: 2BD/1BA, no well or septic
- Cold storage building: 40'x60', new compressor & coil, electric, 40'x60' cement pad & Dry storage building: 40'x60', ± 30'x50' cement pad

Parcel 4: ± 36 Acres Total

SW Corner of Hall & Peters Roads

- Tiled
- ± Acres of Varieties: Red Delicious (3.5), Golden Delicious (.84) & Rome (1)
- Balance of ±25 Acres tillage (Soybeans in 2019)

Parcel 6: Migrant Housing Complex on ± 5 Acres

SE Corner of Hall & Peters Roads

- Legally holds 47 H2A workers
- 5" Well (2016) - 10HP Pump
- Electric & propane heat
- All furnished with beds, stoves, refrigerators, tables/chairs
- 3 Buildings (5 room motel style, 4 room motel style, 1 single)
- This parcel will have a minimum opening bid and will be sold as an individual parcel, not combined with other parcels

Parcel 8: Migrant Housing Complex on ± 6.5 Acres

NW Corner of Canada & Apple Roads

- Legally holds 50 H2A workers
- 4" Well
- 2 Forced Air propane heat
- All furnished with beds, stoves, refrigerators, tables/chairs
- 2 Duplex Units & 6 Stand Alone Units
- Laundry area
- This parcel will have a minimum opening bid and will be sold as an individual parcel, not combined with other parcels

Parcel 9: ± 55 Acres

Apple Avenue East of Canada Road

- ± Acres of Varieties: Red Delicious (9.5), & Ambrosia (1.2)
- Delicious (7), Golden Delicious (9.2), Gala (22.2), Honey Crisp (9.2)
- Includes (2) Frost Fans (454 Chevy - propane)

Parcel 10: ± 55 Acres

Apple Avenue East of Canada Road

- ± Acres of Varieties: Red Delicious (32.7), Golden Delicious (16.65)

Currently, Parcels 8-10 have land lease/wind easement in effect.

Also selling 4,000 Apple Boxes, Orchard Sprayers & Misc. Orchard Equipment for Snappy Apple on Wednesday, December 18 in the Orbitbid.com online auction. Same online auction as L&L Bull Equipment.

AUCTION #2

L&L Bull Equipment (Online Bidding Only)

Online Bidding on Orbitbid.com on Wednesday, December 18th

- Tractors**
 - JD 5101EN, 2009, Cab, 101HP Diesel, 12 Spd Man., MFWD, PTO, 3Pt, 4,836 Hrs
 - JD 5500N, 1996, Cab, 73HP Diesel, Hydro, PTO, 3Pt, 7,837 Hrs
 - JD 4430, Cab, 125HP Diesel, 16 Spd Man, PTO, 3Pt, 2,468 Hrs
 - JD 2335, 1990, Cab, 67HP Diesel, Hydro, PTO, 3Pt, 10,698 Hrs
 - JD 2555, 1987, Cab, 65HP Diesel, 8 Spd Man, PTO, 3Pt, 13,751 Hrs
 - JD T4W1C Loader Backhoe, Open Station, 4-Cyl Gas, Man., PTO, 3Pt, Loader Attachment, 80" General Purpose Bucket; Backhoe Attachment, 12" BOTE Bucket
- Sprayers**
 - AgTec Crop Sprayer, Pull Type, 400 Gal. Fiberglass Tank, Rear 16-Nozzle Sprayer, PTO, Jack Stand, Pin Hitch, Raven Controls & Monitor
 - AgTec Crop Sprayer, Pull Type, 400 Gal. Fiberglass Tank, Rear 16-Nozzle Sprayer, PTO, Jack Stand, Pin Hitch, Raven Controls & Monitor
- Skid Steer**
 - Case 1835C Skid Steer, OROPS, 48HP Diesel, Hydro, 67" General Purpose Bucket, Rebuilt Engine, injectors & injection pump, new alternator, 2,922 Hrs
- Trucks**
 - 2002 Chevy Silverado 1500, 4.8L V8 Gas, Regular Cab, Long Bed, Auto, 4X4, 176,860 Mi
 - 2001 Chevy Silverado 1500, 5.3L V8 Gas, Regular Cab, Long Bed, Auto, 4X4, 221,276 Mi
- Trailer**
 - 2009 Corn Pro UT-18L Utility Trailer, Tandem, 83"x18", Steel Frame, Wood Load Bed, 18" Tubular Steel Sides, Steel Ramps, Jack Stand, Ball Hitch, 7000# GVWR, Spring Suspension
- Field Implements**
 - JD 111 Disc, 11', 20" Coulters, 9" Spacing
 - JD Chisel Plow, 22', Hyd. Folding Wings
 - JD 7000 Planter, 4-Row, Poly Seed Boxes
 - MT 94 Mechanical Transplanter Plastic Layer, Steel Frame, Rear Platform, Dual Station, Row Coulters, 3Pt Mounted
 - Phil Brown Mechanical Tree Planter, Steel Construction, Sub-Soiler
- Forklifts**
 - Nissan CPH02A25PV, 4400# Max. Load Capacity, 187" Max. LP Gas, Overhead Guard, 3-Stage Mast, Side Shifter, 42" Forks, 2,754 Hrs
 - Nissan CPJ02A25PV, 4400# Max. Load Capacity, 187" Max., LP Gas, Overhead Guard, 3-Stage Mast, Side Shifter, 42" Forks, 10,853 Hrs
- Apple Boxes**
 - ± 4,500 Apple Boxes
- Farm Support Equipment**
 - Honda Four Trax ATV4 Wheeler, 300cc Gas, Man., 4x4
 - NorthStar Sprayer, 25 Gal Poly Tank, NorthStar NSQ Series 12-Volt Pump, 5-GPM, Hose, Wand
 - JD Offset Rotary Mower, 10', PTO
- Other Equipment**
 - JD MX8 Brush Hog
 - (2) Backblade Attachments, 8"
 - (3) Fork Attachments, 42"
 - Bale Spear Attachment
 - Pull Behind Sprayer, 150 Gal
 - JD Sickie Bar Mowers, 7"
 - (6) Forkable Totes
 - Troy Bilt Jet Sweep Walk Behind Blower
 - New Idea Elevator 177, PTO
 - JD 312 Lawn Tractor
 - (3) Hydraulic Chain Saws
 - (2) Stihl Pole Saws
 - (4) Hydraulic Pruners
 - Plus much more



AUCTION #3

L&L Bull Real Estate

Prime orchard land with high elevation - Located in Muskegon County, Casnovia Twp - Open House: Dec. 10 (1-3pm)
ALL SELLS WITH NO MINIMUMS OR RESERVES

Parcel 1: ± 30 Acres Total

On Brown Road, South of White

- Mature trees consisting of: (± Acres) Linda Mac (2.5), Honey Crisp (8.5), Gala (3), Golden Delicious (3), Ever Crisp (1), Ida Red (.5) & Fuji (1 Row)
- East side of this parcel is tiled

Parcel 3: ± 18.9 Acres Total

On Brown Road, South of White

- Some mature apple trees & some younger trees, consisting of: (± Acres) Honey Crisp (4), Golden Delicious (2), Red Delicious (4), Gala (4), Fuji (3), Cortland (.5) & Peaches (1.5)

Parcel 2: Migrant Housing Complex on 1 Acre

On Brown Road, South of White

- Duplex: (Each side has 2BD, open kitchen, living area, 3/4 bath, units are winterized each season, can be used for year round housing, water tests done on annual basis, capacity - 12)
- Propane furnace & stove (New furnace 2018 in both units)
- New Roof (2019)
- Washer hookup outside
- Well & septic

Parcel 4: ± 14.8 Acres Total

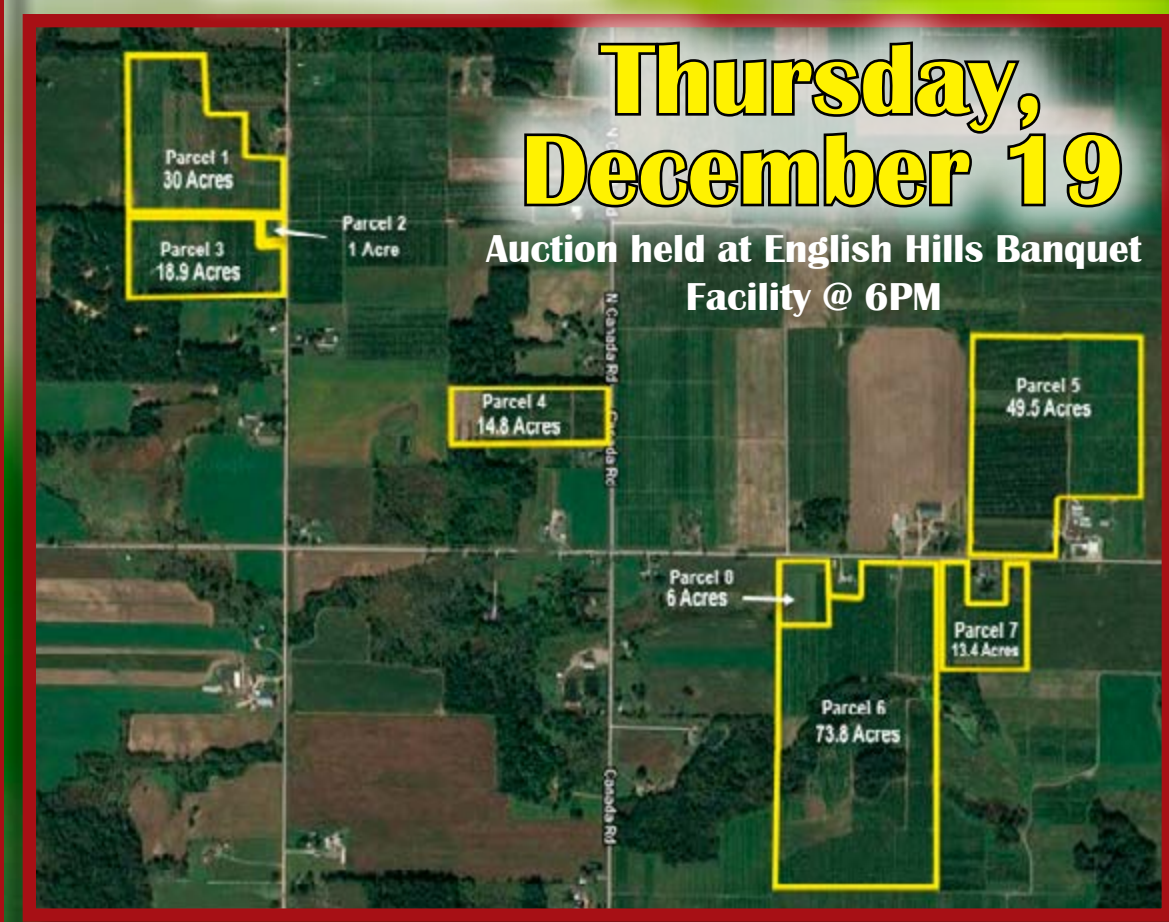
On Canada Road, North of Hall

- Producing apple trees, consisting of: (± Acres) Gala (6), Fuji (4), Linda Mac (3) & Golden Delicious (.6)

Parcel 5: ± 49.5 Acres Total

On Hall, East of Canada Road

- Producing apple trees, consisting of: (± Acres) Gala (26), Fuji (4.5), Linda Mac (2.5), Red Delicious (11.3), Honey Crisp (3.2), Ever Crisp (2.8) & Sweet Cherries (A Few)
- Note: Buildings are NOT selling
- South portion is tiled



Thursday, December 19

Auction held at English Hills Banquet Facility @ 6PM

Parcel 6: ± 73.8 Acres Total

On Hall, East of Canada Road

- Producing apple trees, consisting of: (± Acres) Gala (35), Empire (5), Golden Delicious (13), Ida Red (1), Linda Mac (2), Honey Crisp (1), Jonathon (3), Fuji (.5), Peaches (2.5)
- (2) Mobile homes (3BD/1BA in each) previously used for migrant housing, licensed for 16 workers, washer hookup outside

Parcel 7: ± 13.4 Acres Total

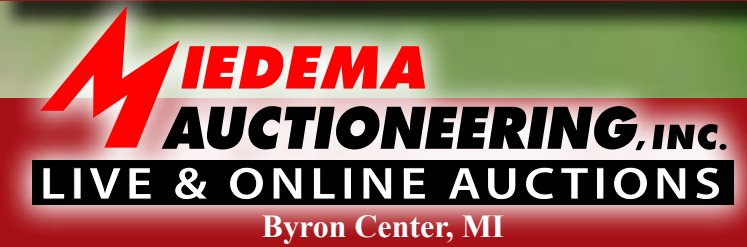
On Hall, East of Canada Road

- Producing apple trees, consisting of: (± Acres) Golden Delicious (5), Gala (7), Empire (1) & Red Delicious (.5)
- Entire parcel is tiled

Parcel 8: ± 6 Acres Total

On Hall, East of Canada Road

- Currently stocked with nursery trees, varieties include: Honey Crisp (from 1-3 years), Pink Lady, Linda Mac, Gala, Ever Crisp, Ambrosia, Fuji
- Also root stock for grafting
- ± Totals grafted: 16,200 - ready for graft: 2,000 - 3,000
- Entire area is fenced
- Well for irrigation



For detailed information, bid packet, additional pictures, etc. call 1-800-527-8243 or visit MiedemaAuctioneering.com

4% Buyer's Premium will be in effect for the Real Estate Auctions and 10% for the Equipment Auction

(3) DAYS OF AUCTIONS



**Snappy Apple Real Estate
Tuesday, December 17 - 6PM**

**L&L Bull Equipment & Real Estate
Weds., Dec. 18 (Equipment - Online)
Thurs., Dec. 19 - 6PM (Real Estate)**



REAL ESTATE LAND & EQUIPMENT LOCATED IN CASNOVIA, MI



601 Gordon Industrial Court, Byron Center, MI 49315

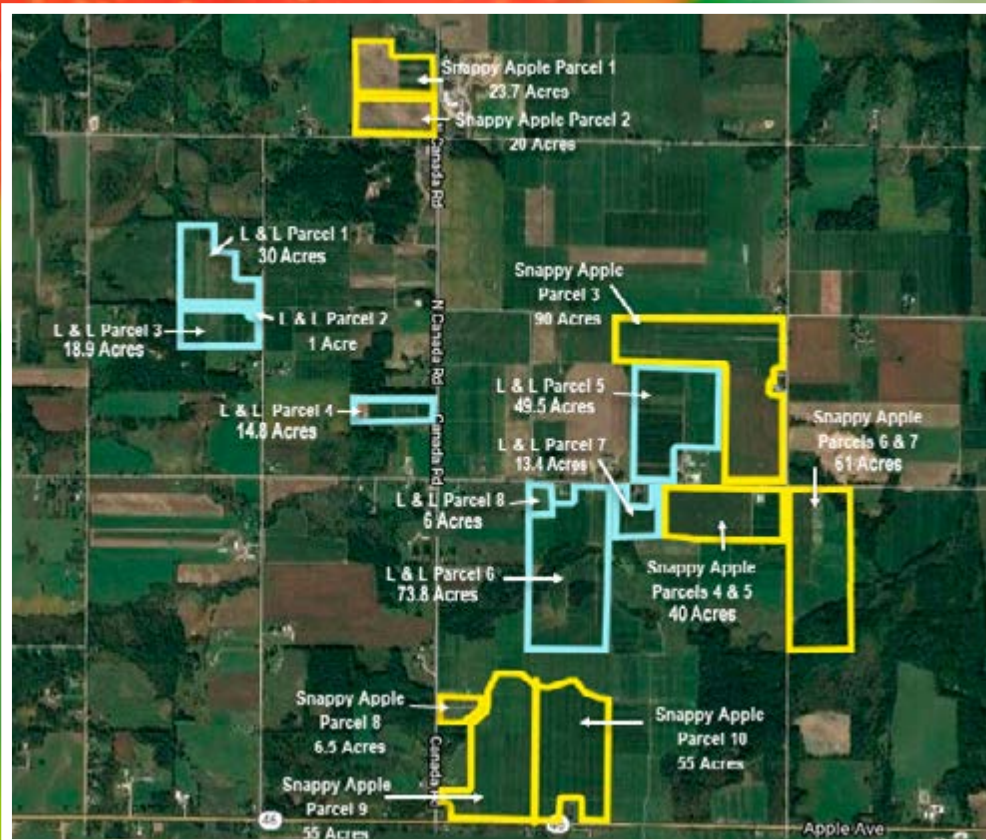
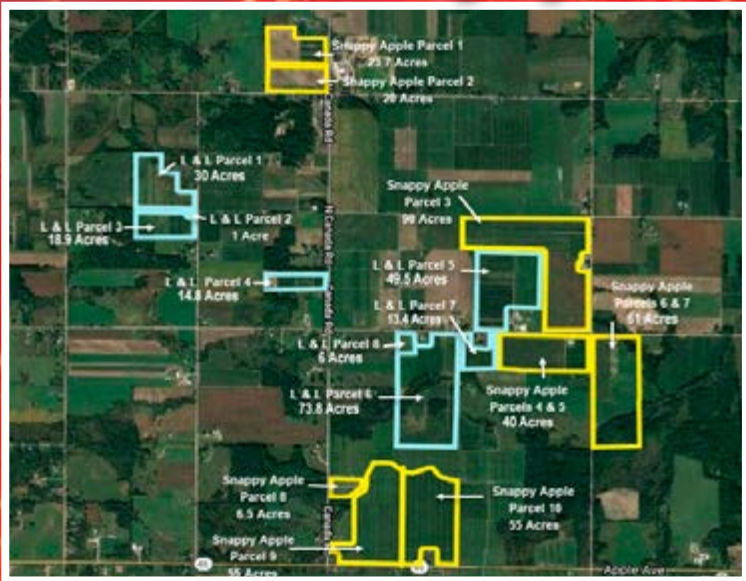


± 559 Total Acres

**Orchard & Farm Equipment
Casnovia, MI**

PRST STD MAIL
US POSTAGE
PAID
Grand Rapids, MI
Permit No. 1

**Snappy Apple Real Estate (Dec. 17)
L&L Bull Equipment (Dec. 18) & Real Estate (Dec. 19)**



**Snappy Apple Real Estate (Dec. 17)
L&L Bull Equipment (Dec. 18)
L&L Bull Real Estate (Dec. 19)**

- Prime High Elevation Orchard Land in Casnovia, MI
- ± 559 Acres Total (Selling for 2 Owners)
- Migrant Housing Complexes
- Home with Storage Buildings
- Full Line Up of Orchard & Farm Equipment



Visit MiedemaAuctioneering.com for detailed information, terms, bidder's packet, pictures, etc. or call 1-800-527-8243.