



# THE LORD IS WITH ME

Color Jesus



Which path leads to happiness? Which path brings us to Jesus?

## Take-Home Paper Early Childhood

PSALM 23



Part 3

Name \_\_\_\_\_

MEMORY VERSE

"THE LORD IS MY  
SHEPHERD; I HAVE ALL  
THAT I NEED."



PSALM 23:1



GOD IS WITH ME!

Bible Story  
The Lord is my  
Shepherd  
Psalm 23:5-6



Dear Parents, We finished up our series from Psalm 23, which tells us how to look to Jesus as our Good Shepherd. Today we learned about how He is always **WITH US!** You can help your child continue to grow by using the activities in this Take-Home Paper at your own pace. It's fun, easy, and you will grow together! When your child completes this, sign the front and have them return it to class the following week for a prize.

\_\_\_\_\_  
Parent's Signature



# READ: THE LORD IS MY SHEPHERD

A Lesson From Psalm 23:5-6



1



2



3



4



5

God Is With Me!



## READ THE POEM

When you run and when you play,

God is with you every day!

If you're scared or feeling blue,

God is always close to you!

So little one, don't be afraid,

God our Shepherd never fades!

We are never really alone!  
Isn't that so cool? Even if you  
feel like no one is near, God  
always is. He is always listening  
when we pray to Him!

Kyle



Sheldon

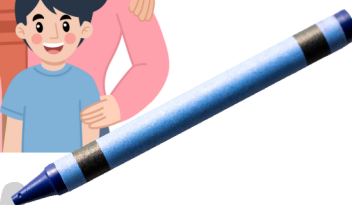


# OVERFLOWING CUP



When you follow God, He fills your cup! You will have everything that you need!

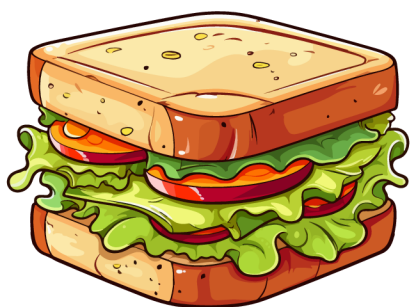
- Trace the lines to put the blessings in the cup.
- Write the blessing words.



My House



My Church



My Food



My Clothes







## READ ELLA'S STORY

Ella ran down the aisle at the store to see all of the toys on the shelves.



Ella soon realized that she didn't know where her mom was... Ella was lost and afraid.



Ella wanted to cry, but she remembered what she heard at church - God was always with her! She prayed and asked God to help her.



Then Ella's mom found her! Ella was so glad that God was with her when she was afraid.



## SAY AND WRITE THE ONE THING

