








# Face Coverings, Masks, & Respirators

## KNOW THE DIFFERENCE

### AND WHEN TO USE THEM



	N-95 RESPIRATORS	SURGICAL MASKS	CLOTH FACE COVERINGS
 Who Should Wear	Healthcare Workers	Healthcare Workers and patients in medical treatment	General public
 Risk Factor	High-risk situations (e.g., direct patient care activities that require aerosol-generating procedures)	Moderate-risk situations (e.g., patient care activities that do not require aerosol-generating procedures; source control for symptomatic patients)	Routine situations
 What it Does	Reduces wearer's exposure to particulates in the environment by filtering out at least 95% of particles (both large and small)	Protects wearer from large droplets, sprays, splashes of fluids and protects others from the wearer's respiratory droplets; does NOT protect wearer from inhaling particles and is NOT respiratory protection	May reduce risk of asymptomatic persons spreading droplets from their exhaled breath into their immediate environment ("My cover protects you; Your cover protects me") does NOT protect wearer from inhaling particles and is NOT respiratory protection
 Fit-Testing	Yes (wearers of these tight-fitting masks are to be medically-cleared, fit-tested, enrolled in a respiratory protection program, and trained in use)	No	No
 Limitations	Designed to be disposable; extended use and reuse possible [between uses store in a breathable container, (e.g., paper bag); may be sterilized and reused; discard when it becomes wet, visibly dirty, deformed, or damaged]	Designed to be disposable; extended use and reuse possible [between uses store in a breathable container, (e.g., paper bag); discard when wet, torn, or if elastic is no longer intact]	Effectiveness is unknown; reusable, but must be washed between uses

## N-95 AND SURGICAL MASKS



Can not be shared by staff members.

Discard if soiled, damaged or hard to breath through.

Between uses store in a breathable container, such as a paper bag.

**EXTENDED USE:** Wear the same N-95 respirator for repeated close contact encounters with several different patients, without removing the respirator between patient encounters.

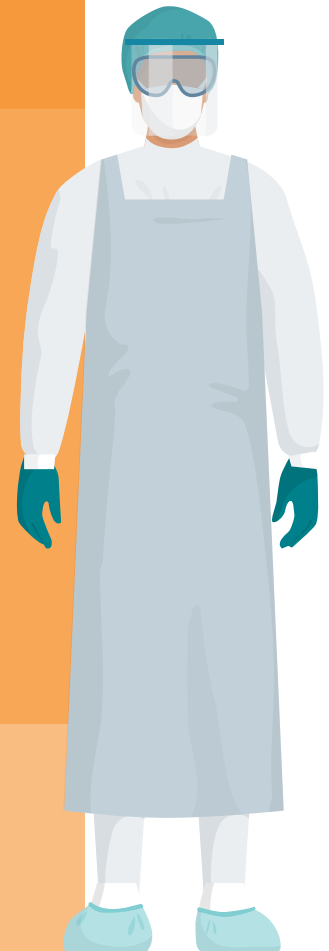
**RE-USE:** One healthcare worker may use the same N-95 respirator for multiple encounters with different patients, with removal of the respirator after each encounter. Consult the respirator manufacturer for the maximum number of recommended reuses for a particular respirator model. *(If manufacturer guidance is not available, limit the number of reuses to no more than **five uses** per device to ensure an adequate safety margin.)*



	TYPE OF FACE COVER	DISPOSABLE GLOVES	EYE PROTECTION	FACE SHIELDS	GOWNS
<b>PRIORITY 1</b> Patients with suspected or confirmed COVID-19 infection	Surgical masks	No	No	No	No
<b>PRIORITY 2</b> Healthcare Workers performing aerosol-generating procedures, including autopsies	N-95 respirators	Yes	Yes (eye protection or face shield)	Yes (eye protection or face shield)	Yes
Healthcare Workers not performing aerosol generating procedures	Surgical masks	Yes	Yes	No	Yes
Emergency Services and Law Enforcement personnel providing pre-hospital care	Surgical masks	Yes	Yes	No	No
<b>PRIORITY 3</b> Individuals conducting mortuary affairs operations (other than autopsies); Individuals transporting suspected or confirmed COVID-19 patients	Surgical masks	Yes	Yes	No	No
Individuals supporting quarantine operations	Cloth face coverings	No *	No	No	No
Administrative personnel supporting isolation operations	Cloth face coverings	No*	No	No	No
Medical Attendants supporting isolation operations	Surgical masks	Yes	Yes	No	No
<b>PRIORITY 4</b> Individuals conducting operations at installation gates	Cloth face coverings	No (unless direct contact with another person is required) Work/utility gloves are to be worn instead	No	No	No

# Personal Protective Equipment

## PRIORITY OF USE



Info taken from:  
<https://www.cdc.gov/coronavirus/2019-ncov/hcp/respirators-strategy/contingency-capacity-strategies.html>  
<https://www.cdc.gov/coronavirus/2019-ncov/hcp/ppe-strategy/face-masks.html>  
<https://www.cdc.gov/coronavirus/2019-ncov/hcp/ppe-strategy/index.html>

*\*Unless handling soiled laundry, participating in meal service, or participating in direct contact activities.*



**For current COVID-19 information:**

<https://phc.amedd.army.mil/covid19>  
<https://www.coronavirus.gov/>

**The Military Health System Nurse Advice Line is available 24/7:**

Call 1-800-874-2273 option #1  
or visit <https://www.health.mil/1-Am-A/Media/Media-Center/NAL-Day-at-a-glance>

**For more information,** contact your installation's Department of Public Health.



**Public Health**  
Prevent. Promote. Protect.

Army Public Health

**The Army COVID-19 Information Hotline:**

1-800-984-8523  
Overseas DSN 312-421-3700  
Stateside DSN 421-3700