

TRAVEL ➡ SNAP CARDS

FRAMES



All elements of composition have one task, and that is to provide a viewer of your photograph a path into your image, then through it, and finally to a place where their eye movement will stop and rest. Frames provide a powerful tool for pushing a viewer's eyes in a given direction. They can also help you place emphasis within the image.

PRINT SIZE: A5
14cm x 21cm /
5.83" x 8.27"

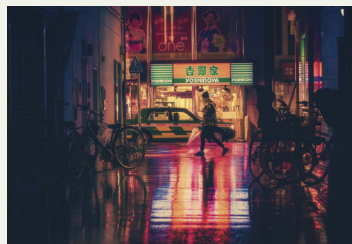
FRAMES AS ACTIONS AND SHAPES



LEFT: This travel photograph makes classic use of a frame. The frame is clearly identifiable, yet doesn't overwhelm the subject.

TOP: A frame doesn't need to hold the same emphasis as a focal point. Yet, it will be most effective if it is clearly identifiable. The frame on the top right is clearly seen through shape, tonal contrast, and color contrast. The frame on the top left is almost unidentifiable.

THE FRAMES MUST DRAW THE EYE TO A POINT



Here we have two night scenes that rely on color for visual impact. The one on the right has a frame. The frame is pushing us inward toward the girl, where our visual journey ends. There is no strong ending point for the image on the left. That creates a weak composition.



NOT ALL FRAMES ARE EQUAL

Using a frame works very well for black and white as well as monochromatic color photography. Make sure that your frame doesn't have a strong shape that will draw attention away from the subject, such as the man's nose on the picture on the right.

ROUND UP COMPOSITION - FRAMES