

Total time:
4-6 hours



Difficulty Level:
Very challenging

Skill Points:

- Expanding knowledge on histogram use
- Learning to read the histogram
- Evaluating histograms and making adjustments

DEMYSTIFYING THE HISTOGRAM

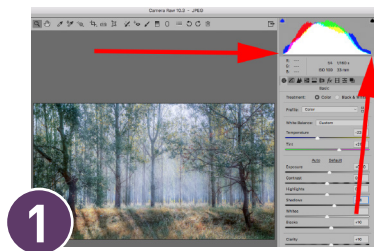
The histogram is one of the most powerful tools at your disposal in digital photography. It provides a measurable account of what is happening with the pixels of your photograph. This tool originated from mathematics. It merely plots data. It takes experience to interpret what the histogram is telling you about your photograph and why.



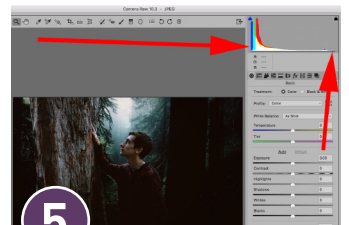
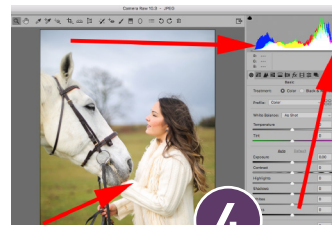
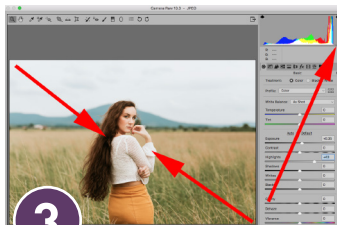
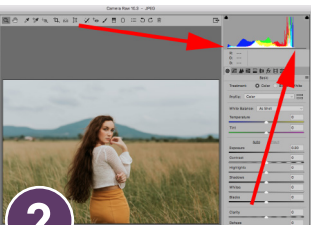
KEY LESSON: Using the histogram, you can evaluate: exposure, contrast, brightness, and color balance. The basic line on histograms is that they should appear as a mountain range that ends at either end of the graph before being clipped off.

EQUIPMENT: Any camera including mobile | Any lens | Photo Editing Software

SAMPLE PHOTOGRAPHS



1- The left side of the histogram represents the deepest blacks. The right side shows the brightest whites. Everything in-between is the various tones. Looking at the histogram vertically. The baseline is zero. As the graph rises from the baseline, it tells you how many pixels are in a particular tonal range. This histogram is telling us that there are many midrange tones.



2- This image appears to have a full range of tone. The histogram tells us that it doesn't. The blacks look good. But, the whites have fallen far short on their side of the graph. The histogram has just told us that this shot is **low in contrast**.

3- Adjusting the Exposure and the Highlight values moved the histogram toward the right side, correcting the contrast. When adjusting the histogram, always watch the preview window. If you're working the whites side- watch the brightest areas, so that you don't over-adjust and lose detail. When adjusting the blacks watch the shadows in the picture so that they don't block up.

4- This image is mostly white tones. Trying to adjust it back to the left would ruin the shot. Using the Highlights slider, the clipping can be removed. The elevated blue area tells us that there is predominance of blue in the shadows. The white scale is strictly brightness value. The individual colored scales can help you to determine if your image has a color bias.

5- When a shot is made of predominantly dark tones, the histogram is going to be skewed to the left; it **does not indicate underexposure**. It's also important to have some part of the histogram reach the whites side (if possible). Don't try to move the entire histogram to the right, or you'll ruin the low-key effect.



ACTION ASSIGNMENT!

1- Organize a photo shoot similar in content to the example photos.

- Place your model in three situations: a dark setting that still has some white areas, a white setting that still has some dark areas, and a setting with a full range of white to dark (study the example photos)
- Create a number of different shots and vary your exposures by no more than + or - one stop.
- Go through your files and pull 10 images. Pick some that are too dark, some that are too light, some that look good to your eye, some that are close, but you believe could be better. Study all the histograms on your photos. Try to adjust them.

HOW DID YOU DO?

- Do your finished photographs reflect a histogram that matches your intent?
- Were you able to adjust the histogram and make your images better?

READY! SET! GO! **ACTION CARDS - STRETCH GOALS: HISTOGRAM**



SWEET!

Here's a few more photography goodies for you:

DON'T MISS OUT: Limited Time Daily Free Bonuses Expire 11:59pm EST!

Top pick for you
↙

Action Cards™ Set

READY SET GO! ACTION CARDS
STRETCH GOALS: LITHO FILM EFFECT

65 beautifully designed & printable project sheets that will give you over 200 photography assignments.

[Learn more →](#)

FREE Photography eBooks

Free access to our library of 250+ downloadable (pdf) tutorials on everything you can imagine.

[Learn more →](#)

Snap Cards™ Essentials Set

20 beautifully designed, printable photography cheat sheets that you can take with you anywhere!

[Learn more →](#)

What is Your #1 Photography Killer?

Take this 30 second quiz to find out the #1 thing holding your photography back.

[Take quiz →](#)



Want quick photography tips? Check out our friends at DailyPhotoTips.com they'll send you 1 solid photography tip to your inbox, 5 days a week. So you can start your day right, with actionable tips to help you on your creative journey. [Subscribe now →](#) (free for a limited time)

[...Click here to see 27+ more of our most popular programs](#)

More on the next page



Hey there!

Let's get real for a minute... Learning photography can be super challenging! But we're here to help you every step of the way!

Here are 3 of our most useful (*and FREE!*) photography resources—

1. Take this [30 Second Quiz](#) to find the #1 thing holding your photography back.
2. Download these [3 Free Photography Cheat Sheets](#) to help you understand the basics.
3. Access our [Free Photography eBook Library](#), with 250+ downloadable (.pdf) tutorials on Photo Fundamentals, Post-Processing, Composition, Low-light, and much more!

Always remember: Momentum is the key to exploring and developing your creative talents...

So get out there and take some more pictures!



We're so glad you're here!

Photzy.com is an online photography school with over 200,000 students from 180 countries.

Founded in 2012, our focus has always been simple, practical tips and tutorials, for beginners. No matter where your current skill level is, we'd like to help you explore your unique creative side, through photography.

"At Photzy, we believe EVERYONE is creative, and that photography is the best way to explore and share your creative side with the world."

**Go to [photzy.com](https://www.photzy.com) for more
photography tutorials and inspiration.**