



LEARN & CREATE

with Baby Lock



Watermelon Tablecloth



Enjoy this adorable summer-themed tablecloth for your next picnic or table setting. This project highlights the Baby Lock Circular Sewing attachment and shows off a lot of the sewing features of our machines.

Skill Level: Beginner/Advanced Beginner

Created By: Monica Van Zuiden

Supplies:

- Baby Lock Sewing Machine
- Baby Lock Circular Sewing Attachment
- Fabric
 - Background and checkerboard - 1 ½ yards
 - Red - checkerboard and watermelons – 2/3 yard
 - Light Green – inner border – 1/8 yard
 - Green – watermelons and border – ½ yard



- Madeira Sewing Thread Cotona 50-weight thread
- Baby Lock Tear-Away Firm Stabilizer BLT103
- Flannel for backing – 1 ¼ yard
- Klassé 75/11 Embroidery or Universal Needle
- Basic Sewing supplies

Getting Creative:

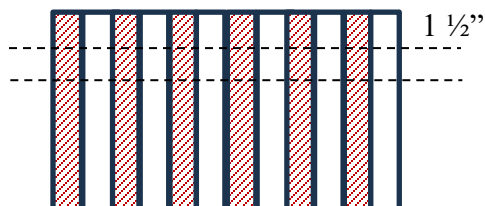
Cutting instructions:

Fabric	No. of Pieces	Dimensions	Used For
White	6	1 ½" x WOF strips	Checkerboard
	4	9 ½" squares	Watermelon corners
	4	8 ½" x 15 ½"	Center piecing
	2	7 ½" squares	Watermelon applique
	1	15 ½" square	Tablecloth center
	4	3" x WOF strips	Outside border
Red	6	1 ½" x WOF strips	Checkerboard
	5	2" x WOF strips	Binding
	4	6 ¾" squares	Corner watermelon squares
	2	7" squares	Watermelon applique
Light Green	4	1" x WOF strips	Inner border
Dark Green	4	1 ¼" x WOF strips	Middle border
	2	8 ¾" squares	Watermelon applique
Baby Lock Tear Away Stabilizer	2	9 ½" squares	Watermelon applique



Instructions:

1. Sew together the 6 - 1 1/2" x WOF white strips to the 6 - 1 1/2" x WOF red strips, alternating the fabrics. Press all the seams towards the darkest fabric as you go.

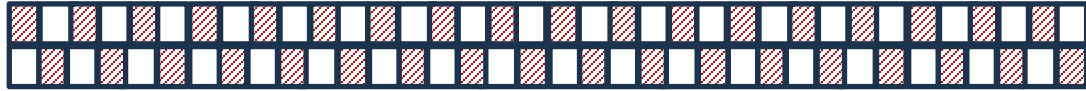


2. Cut the strip sets into 1 1/2" strips.

3. Sew 3 of the 1 ½” strip sets together. You will have 8 sets of 36 squares of red and white.



4. Sew 2 -36 square strips together so they form a checkerboard.



5. Create 2 checkerboard sets that measure 2 ½” x 36 ½” and 2 that measure 2 ½” x 32 ½”. Use a seam ripper to remove excess checkerboard for the shorter rows.
6. Attach the Circular Sewing Attachment to the machine.



7. Find and mark the vertical and horizontal center on each of the following:
- 2 – 9 ½” squares of Baby Lock Tear Away Stabilizer
 - 2 – 9 ½” squares of white fabric
 - 2 – 8 ¾” squares of green fabric
 - 2 – 7 ½” squares of white fabric
 - 2 – 6 ¾” squares of red fabric
8. Lay a white 9 ½” square of white fabric over a 9 ½” square of stabilizer, with the wrong side of the white fabric facing the stabilizer. Align the center marks.
9. Lay a green 8 ¾” square over the white square with wrong side of green square facing right side of white square. Aligning center marks.
10. Push the circular sewing attachment pin through the center mark of the entire stack of stabilizer, white fabric and green fabric.



11. Put the pin into the circular attachment in the middle of the red lines to hold the fabric stack in place and secure while stitching.
12. The first stitch is the outside of the watermelon applique tack-down stitch.
- Set the pin position on the circular attachment to the 100mm mark.

- Thread the machine with green thread.
- Using a straight stitch, stitch the tack down stitch for green rind of the watermelon.



13. With the tack down circle stitch complete. Trim only the green fabric just outside of the stitched line.



14. If the fabric stack has been removed from the machine, place it back in place making sure not to move the pin holder on the circular sewing attachment.

15. Select a zig zag stitch for the satin stitch around the outside of the watermelon rind.



16. Stitch the satin stitch in a perfect circle.

17. Without removing the fabric stack lift the front edge so the mm marks on the front of the circular sewing attachment are visible. Carefully lift the move lever and move the pointer so it aligns with the 85mm mark.

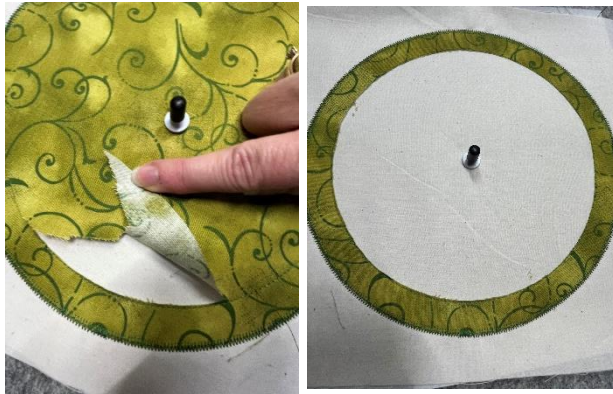


18. Select a straight stitch on the machine and stitch inside cut line for the watermelon rind.

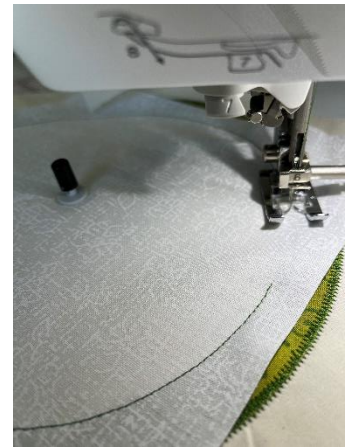


19. Release the pin from the circular sewing attachment by pushing the metal release button in front of the pin. Take the pin out of the fabric stack.

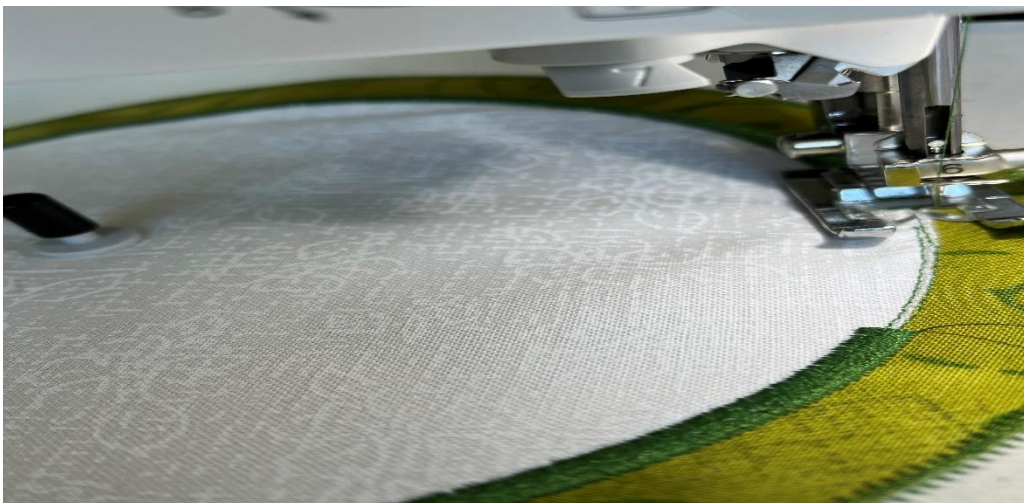
20. Cut the green fabric close to the inside of the straight stitched cut line. This will remove excess unneeded fabric.



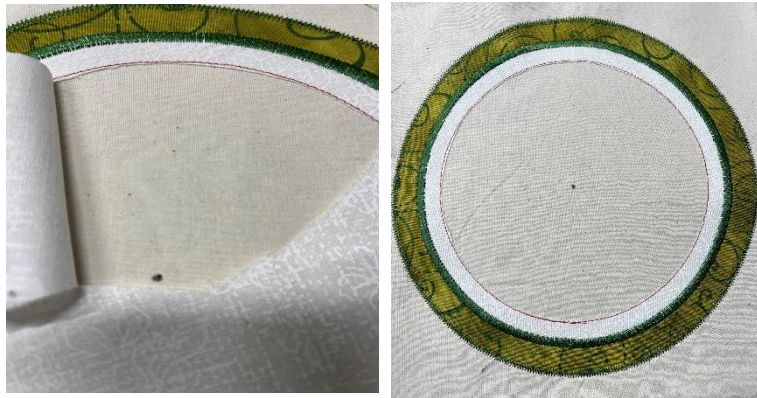
21. Lay the white 7 ½” square over the fabric stack aligning the center points. Push the pin through the center point of the fabric stack with the added white fabric square.
22. Place the fabric stack back on the machine with the pin secured in the circular sewing attachment.
23. Stitch the tack down stitch with a straight stitch.



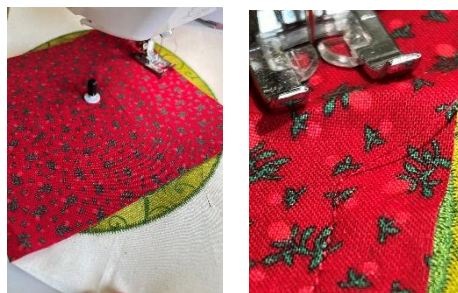
24. Trim the white fabric on the outside of the tack down stitch.



25. Change the stitch to a zig zag for a satin stitch or other decorative stitch and stitch around the edge of the white and green fabrics.
26. Without removing the fabric stack, lift the front edge so the mm marks on the front of the circular sewing attachment are visible.
Carefully lift the move lever and move the pointer so it aligns with the 75mm mark.
27. Change the thread to a red color to match the inside of the watermelon.
28. Change the stitch to a straight stitch and stitch the tack down for the inside of the white fabric.
29. Remove the fabric stack from the machine by releasing the pin and trim the white fabric on the inside of the tack down stitch.

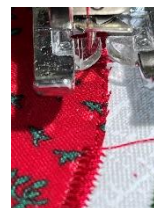


30. Lay the red fabric right side up on the top of the fabric stack. Align the center points and push the pin of the Circular Sewing Attachment through the center of the red fabric and fabric stack.
31. Put the fabric stack back on the machine inserting the pin into the attachment.
32. Without moving the pin position stitch the tack down stitch over the red fabric.



33. Trim the red fabric outside the tack down stitch.

34. Change the stitch to a zig zag for a satin stitch or other decorative and stitch around the edge of the white and red fabrics.



stitch

35. Create a second whole melon block following
36. Layer one of the remaining 9 ½" square of white melon appliqued squares right sides together

the steps 8 -34 and one of the whole and draw a diagonal

37. Sew ¼" away from the drawn line on each side.

38. Cut directly on the drawn line.



39. Press the seam allowance towards the plain white side.

40. Trim half-square triangle block to measure 8 ½" square.

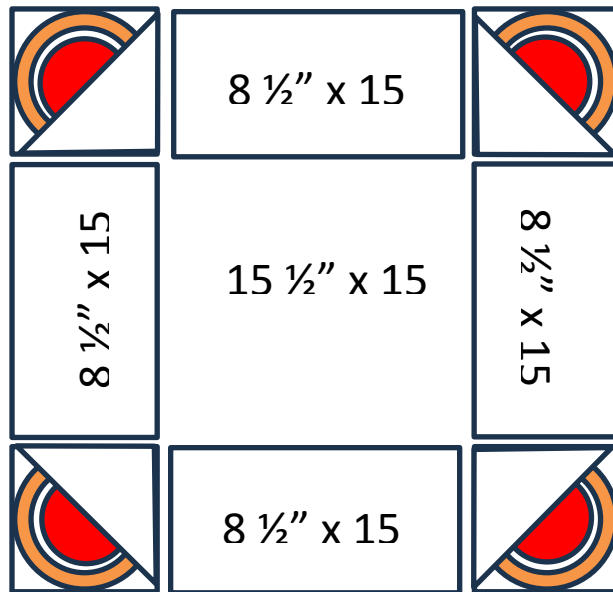
41. Repeat steps 36 – 40 to make 2 more watermelon halves half-square triangle blocks.

42. Sew a half melon block on either side of each of the 8 ½" x 15 ½" rectangles of white fabric along the 8 ½" sides.

43. Sew an 8 ½" x 15 ½" piece to one side of the 15 ½" white center square.

44. Sew the remaining 8 ½" x 15 ½" piece to the opposite side of the center square.

45. Sew the melon strips on the remaining side of the center square.



46. Cut 2 of the light green 1" strips to a length of $31\frac{1}{2}''$. Sew these 2 strips to the top and bottom of your tablecloth center with the corner melon halves.
47. Press seams to the light green border.
48. Cut the remaining 2 light green strips to a length of $32\frac{1}{2}''$. Sew these 2 strips to the sides of the tablecloth center.
49. Press the seams to the light green border.
50. Attach the $2\frac{1}{2}'' \times 32\frac{1}{2}''$ checkerboard border to the top and bottom.
51. Press all seams to the light green border.
52. Sew the $2\frac{1}{2}'' \times 36\frac{1}{2}''$ checkerboard borders to the sides. Press seams to the light green.
53. Sew dark green $1\frac{1}{4}''$ strips to the top and bottom. Press seam toward the dark green border.
54. Sew the remaining 2 dark green $1\frac{1}{4}''$ strips to the sides. Press.
55. Sew 2 of the 3" strips of white to the top and bottom. Press.
56. Sew the remaining white 3" strips to the sides. Press.
57. Layer the flannel (the backing of the tablecloth) and the front of the tablecloth wrong sides together.
58. Quilt as desired.
59. Bind with the 2" red strips using your favorite binding method.

For other great projects like this, visit <https://babylock.com/>

©2024 Baby Lock USA. This project may be freely used by individuals for non-commercial purposes. Project instructions may not be sold or distributed without approval from Baby Lock. Baby Lock must be acknowledged as the source of the project instructions through copyright or online link.