



LEARN & CREATE

with Baby Lock



Flower Swirl Pillow

Serger Pillow



A fun Swirly Flower Pillow with serger techniques can be a stunning addition to any home decor. It looks like free motion stitching, but it is all done on the Applaud with the help of the knee lift. Here's a step-by-step guide to help you create it, taking full advantage of the Baby Lock Applaud's Creative Cover and Chain Stitches and some fun threads. By leveraging the Creative Cover and Chain Stitches of the Baby Lock Applaud, you'll be able to add unique textures and details that will make your Swirly Pillow stand out. Happy Serging!

Skill Level: Intermediate

Created By: Barb Lewis, Baby Lock Educator

Finished Size – 18" X 18"

Project created with:

- Baby Lock Applaud Creative Cover Stitch Machine
- Baby Lock Triumph Serger
- Baby Lock Sewing Machine



Supplies:

- 1 - 14 ½" x 14 ½" fabric for center front
- 3 - 2 ½" x 42" fabric for border
- 1 - 19" x 19" fusible fleece
- 1 - 19" x 9 ½" fabric for back
- 1 - 19" x 10 ½" fabric for back
- 4 - 3" x 1" zipper tabs
- 1 Nylon zipper at least 18" long
- 1 - 14" x 14" pillow form
- 1 - 7" x 8" Heat 'n Bond Lite

Applique pieces:

- 1 - 16" x 6" fabric for the pot
- 1 - 4" x 4" fabric for leaves

Notions:

- 3 Red serger threads (flower)
- 2 Decora #6, colors 1547 & 1591 (reds)
- 3 Green serger threads (stem & leaves)
- 2 Madeira Overlock #4, colors 2409 & 1303 (greens)
- 3 Tan serger threads (pot)
- 2 Decora #12, color 2092 (variegated yellow)
- 4 Blue serger threads (border)
- 2 Decora #6, colors 1566 & 1593 (blues)

Tools Needed:

- Knee Lift
- Erasable fabric marker
- Spray starch
- Tapestry needle

Instructions:

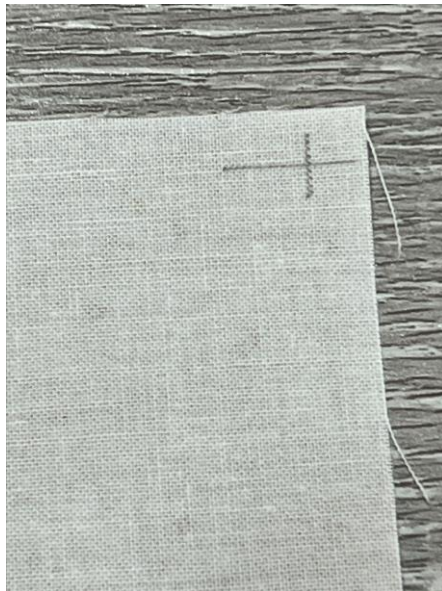
1. Reverse applique the leaf and pot templates and trace on the paper side of the Heat 'n Bond Lite. This can be done using a light table or holding the paper up to a window to trace.
2. Cut the templates out, leaving ¼" all around. Iron the templates to the **WRONG** side of the selected fabrics.
3. Cut directly on the template lines. **Do not remove the paper yet.** Set aside.
4. Sew the borders end to end on the bias with your sewing machine or a 4 thread overlock. Starch and press the strip so it is a little stiff.
5. Mark down the length of the border strip in the center with the fabric

marker.

6. **Set your Applaud up for a Triple Cover Stitch** using the blue serger threads. Test your stitch.
7. Set your **wipers up with the Decora #6, colors 1566 & 1593.**
8. Stitch the center of the length of the border. You will need four 22" lengths for your pillow.



9. On the wrong side, make a mark on each corner of the pillow center, $\frac{1}{4}$ " from each side. This will be your point to start or stop stitching as you sew the borders on.



10. Center a border on each side with right sides together. Pin in place. The

borders will extend 3 ¾" on each side.

11. Sew each side from the ¼" mark to the ¼" mark. Leave the points unsewn. Press to the border.
12. Working with one corner at a time, the vertical border end will be over the adjacent horizontal border end.
13. Fold the vertical border end under and to the left. The edges will be even with the horizontal border end. Tug it as you need to, to get a mitered corner from point to point. The stitched design should line up. Press this fold. Pin.



14. Carefully unfold. Pin. This fold line will be your sew line.



15. Sew the fold line with your Baby Lock Sewing Machine.
16. Lay your corner flat. If you are happy with it, then you may trim the seam to ¼".



17. Repeat with the other three corners. Press the seam open.



18. Fuse the fleece to the wrong side of the pillow top.
19. Remove the paper from the applique shapes by folding a corner to the paper side. The paper will remain folded, and the fabric will bounce back. Peel the paper off.
20. Place the pot in the center about an inch from the border at the bottom. Press in place.
21. Draw your stems, swirls and flower with the fabric marker.
22. Place the leaves. Carefully press them in place so you don't erase your stem and swirls.
23. Set your **Applaud up for a Left Narrow Cover Stitch with the needles in C1 & C2**. Thread with the tan serger threads.
24. Thread the **wipers with the two Decora #12, color 2092**.
25. Stitch around the pot, adding a few horizontal lines.



26. Set your **Applaud up for a Center Needle Chain Stitch**. Thread with green thread.
27. Thread the **wipers with the two Madeira Overlock #4, colors 2409 & 1303**.
28. Stitch the grass at the bottom. Leave long ends at the beginning and end. Pull the threads to the back with a needle to tie.



29. Start at the bottom of the stem, go around the leaves then stitch the side swirls. Leave long ends as you start and stop. Pull those threads to the back with a needle to tie.



30. Thread your Applaud with red thread.

31. Thread the **wipers with the two Decora #6, colors 1547 & 1591.**

32. Stitch around the flower swirls, starting and stopping at the same spot. Leave the threads long. Pull the threads to the back with the needle to tie off.



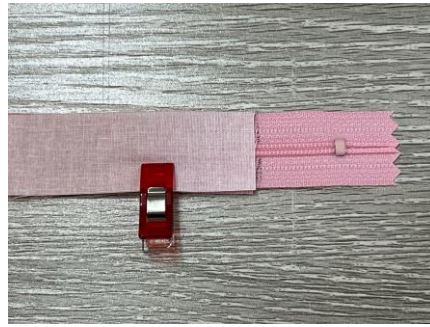
33. Carefully press the pillow top to erase the fabric marker lines. Set the top aside.

34. Mark a 13" section on the zipper.



35. Move the zipper head to the center. Sandwich the zipper between the zipper tabs with right sides together, lining the tabs up on the 13" marks

on both ends.



36. Stitch the tabs to the zipper with a **3 Thread Overlock**. It will automatically cut the zipper ends off as you stitch.



37. Press zipper tabs to the outside. Top stitch with your sewing machine.



38. Place the right side of the zipper right sides together with the 19" x 9 1/2" back piece along the 19" side, sew the zipper with **3 Thread Overlock**. Move the zipper head out of the way as needed.
39. Press the fabric away from the zipper. Top stitch with your sewing machine.



40. Place the 19" side of the 19" x 10 ½" fabric on the other side of the zipper tape, with right sides together. Stitch with a **3 Thread Overlock**.



41. Do not press away from the zipper. Instead fold the fabric back, leaving about an inch to cover the zipper. Press.
42. Stitch again about ¼" away from the zipper on the flap with your sewing machine. This will leave a nice flap over the zipper teeth.
43. Stitch the flap closed 3" in from each side with your sewing machine. Leave the flap over the zipper open.



44. Trim to back to 18 ½" x 18 ½".
45. Place the pillow back on the pillow front with right sides together. Make sure to place the zipper going from side to side.
46. Sew around all four sides with a **4 Thread Overlock**.
47. Turn right side out through the zipper opening. Press.

48. Stitch in the ditch between the pillow center and the border with a narrow left cover stitch and 2 threads in the wipers.



49. Insert the pillow form and you are good to go!!!