

## Projects

### By the Sea Shore



With Palette™ Petite you will be at the sea shore in no time at all enjoying your new embroidered beach towel. Embroidering your designs on different items such as a beach chair or a beach tote will certainly inspire you to keep on discovering your new found hobby.

**Skill Level:** Basic


**Created By:** Diane Kron, Software Projects Manager

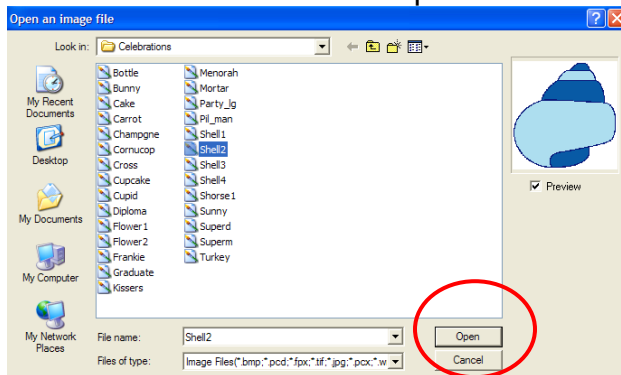
## Supplies:

Baby Lock® Flourish Embroidery Machine  
Baby Lock Palette™ Petite (Installed)  
Beach towel  
Madeira® Embroidery thread  
Baby Lock® Tear-Away Soft Stabilizer  
Baby Lock® Aqua Melt Topping  
Temporary spray adhesive

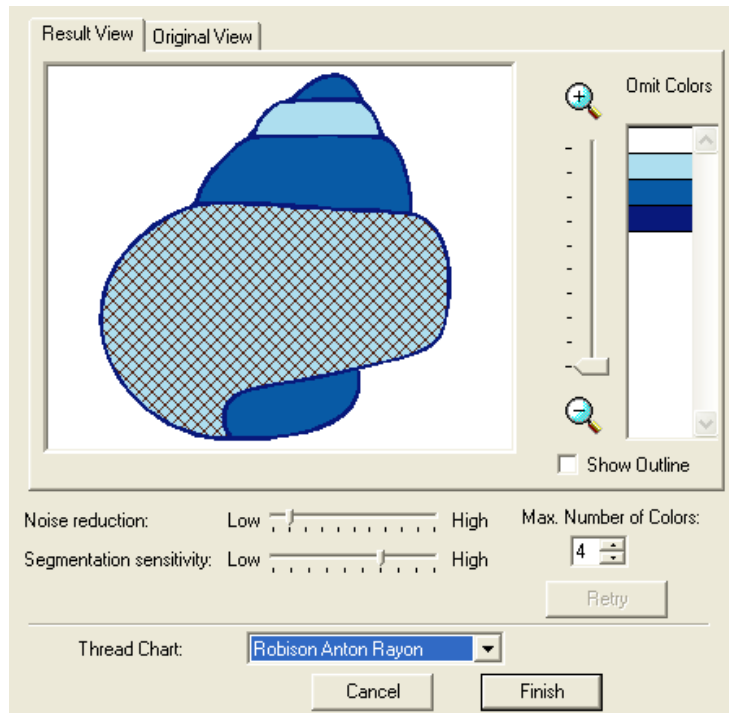
## Instructions:

### Seashell

1. Attach the reader/writer box into the USB hub and open Palette Petite.
2. On the left toolbar click on the Auto Punch  icon. From here we will locate the built in images. The path to the images is as follows:  
C:/Program files/Babylock/Palette Petite/Samples/Clip Art/Celebrations.  
Select Shell 2 and click on Open.




3. In the Auto Punch field you can make several changes to the image before we complete the auto digitizing process, such as omitting colors adjusting Noise reduction, Segmentation sensitivity, and adjusting the number of colors. The area that will be adjusted will be in the area with the crosshatch as shown in the illustration below. Click in that area to remove the crosshatch area. Click on the background area to place the crosshatch. By doing this you will remove any stitches that would have been placed there and giving the design the look of a patch.

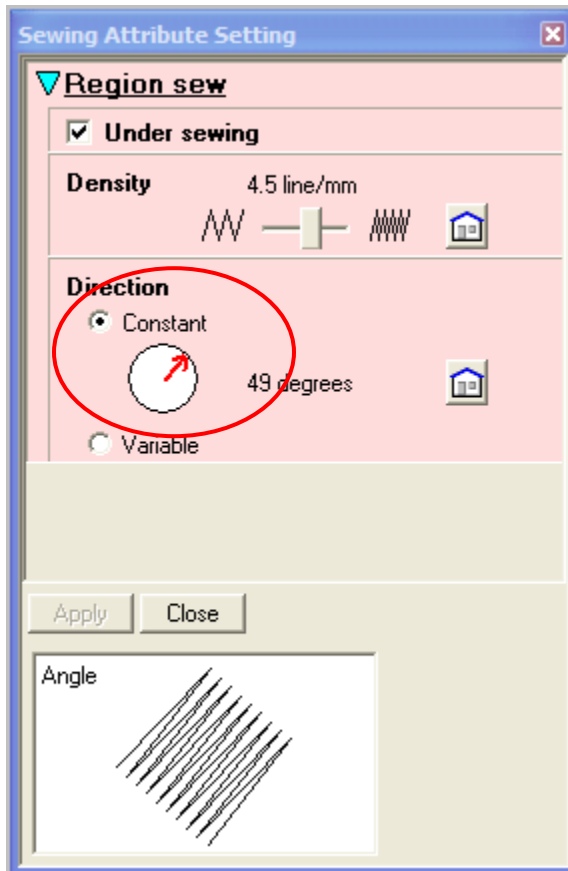






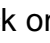
4. The following image will show the crosshatch removed with the crosshatch activated for the background.

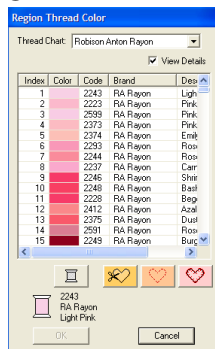



5. Click on Finish to digitize the image and send it to the workspace.
6. In any area where you wish to adjust the stitch direction, hold down the Alt key and left click in the area. Click on the Sewing Attribute  icon to open the Region Sew field. Slide the cursor over the red rotate arrow to turn it into a rotate tool. Give it a try. Note: the number degree changes as you rotate the cursor. Click on Apply when you are satisfied with the stitch direction. Repeat this for any area that you wish to change the stitch

direction.



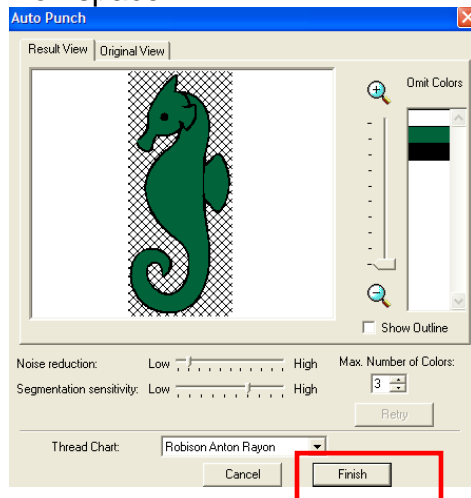
7. If you want to see the design in a realistic mode click on the Realistic Preview  icon. When you wish to continue working with the design you must click on the Preview  icon to turn off the realistic mode.
8. To change the colors on the design, hold down the Alt key while selecting the area you wish to change. Just above the workspace will be loaded the  Fill Stitch  toolbox that will show the existing color.  Click on the spool and the color palette will open. In this field you can change manufacturer's palettes and change to any color within the chosen palette. Make your color changes at this time to any area in the design and click OK.



9. The design is ready to be written to the memory card. Click on the Write to Card icon . Follow the positive prompts. This method will allow you to write one design at a time to the memory card.
10. Click on File menu and choose Save As. Save the design to a location of your choice in the .pes file format, which can be read by Baby Lock machines.
11. Your design is ready to be embroidered.


## Seahorse

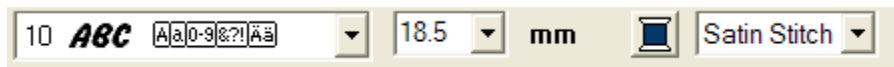
1. Follow the same steps as the Seashell directions but substitute the Shorse1 image and click OK.
2. In the Auto Punch field click on Finish to send the design to the workspace.




3. Following Step 6 from the Seashell design for changing stitch direction.
4. Follow Step 8 to change color on any area within the design.
5. Click on File menu and choose Save As. Save the design to a location of your choice in the .pes file format, which can be read by Baby Lock machines.

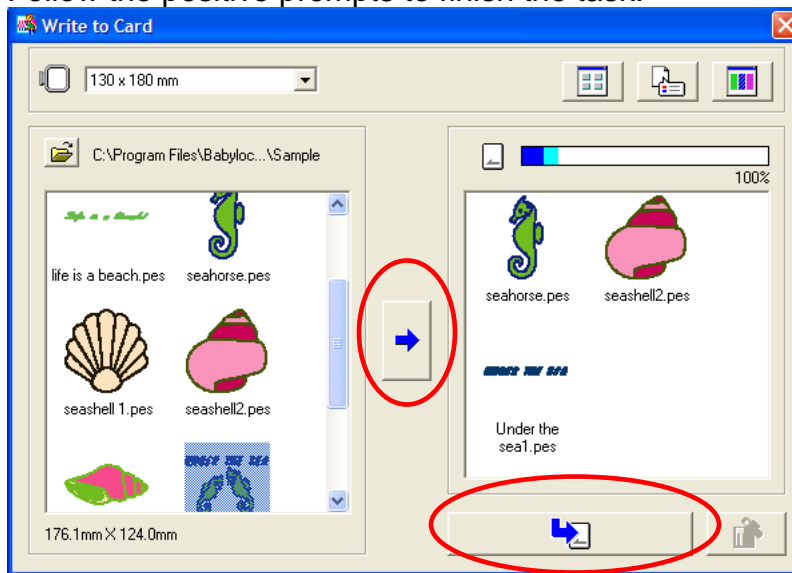
## Lettering

1. Left click to select the Text icon  on the left toolbar.
2. On the Text Attribute bar, select the number 10 font. Change the font size by highlighting the number and typing in 18.5mm. Set the Text body to Satin Stitch.



3. Left click on the workspace to open the properties for the text. Type in "UNDER THE SEA" and click on OK.
4. To select the lettering click on the Select Object  tool and left click anywhere on the lettering.
5. To move the lettering, slide the cursor over the lettering and when the four sided arrow appears left click to move the lettering into position.

6. Click on File menu and choose Save As. Save the lettering design to a location of your choice in the .pes file format, which can be read by Baby Lock machines.
7. To save multiply design files to the Memory Card, click on menu File, Write to Card and from the sub menu choose Other Pes Files. When the Write to Card field opens, select each of the designs individually that we saved from the left side and click on the Arrow pointing to the right to move them to the right side. Click on Write to card tab to send them to the Memory card.
8. Follow the positive prompts to finish the task.



9. To embroider the towel hoop the tear-away stabilizer and spray with the temporary spray adhesive. Place the towel on top of the hoop and finger press in place.
10. Place a piece of aqua melt topping on top of the towel to contain the fibers and to give the finished towel a professional look.
11. If your hoop is large enough combine some of the designs to reduce some of the hoopings. Follow the photo of the image for placement of the designs.

Enjoy your day at the beach!

©2017 Baby Lock USA. This project may be freely used by individuals for non-commercial purposes. Project instructions may not be sold or distributed without approval from Baby Lock. Baby Lock must be acknowledged as the source of the project instructions through copyright or online link

For other exciting projects like this one visit our Web site at [www.babylock.com](http://www.babylock.com)