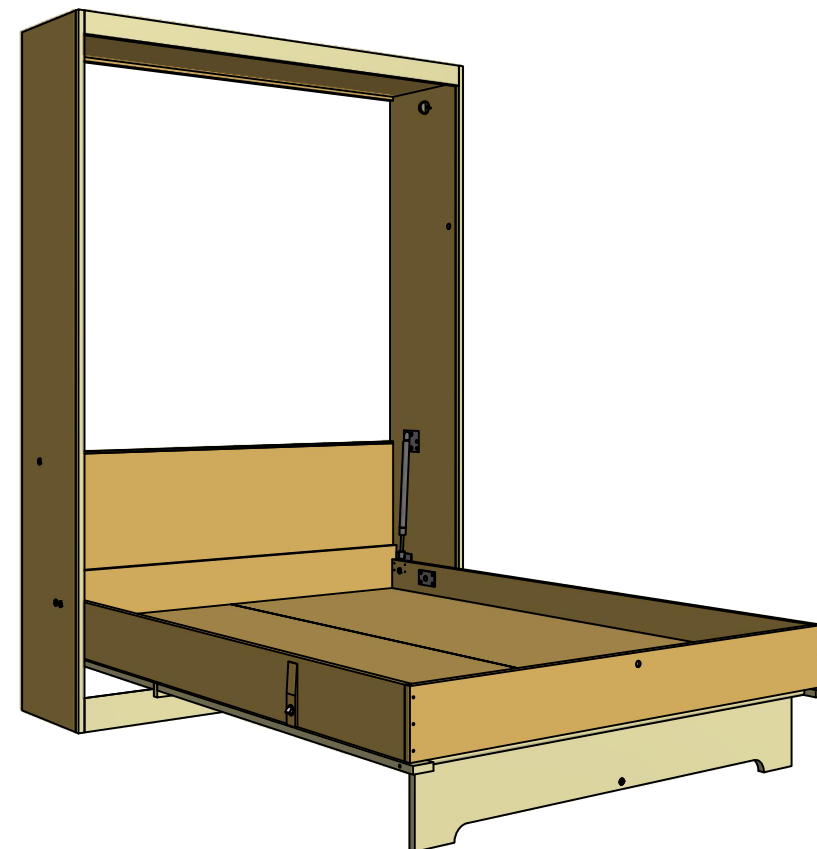
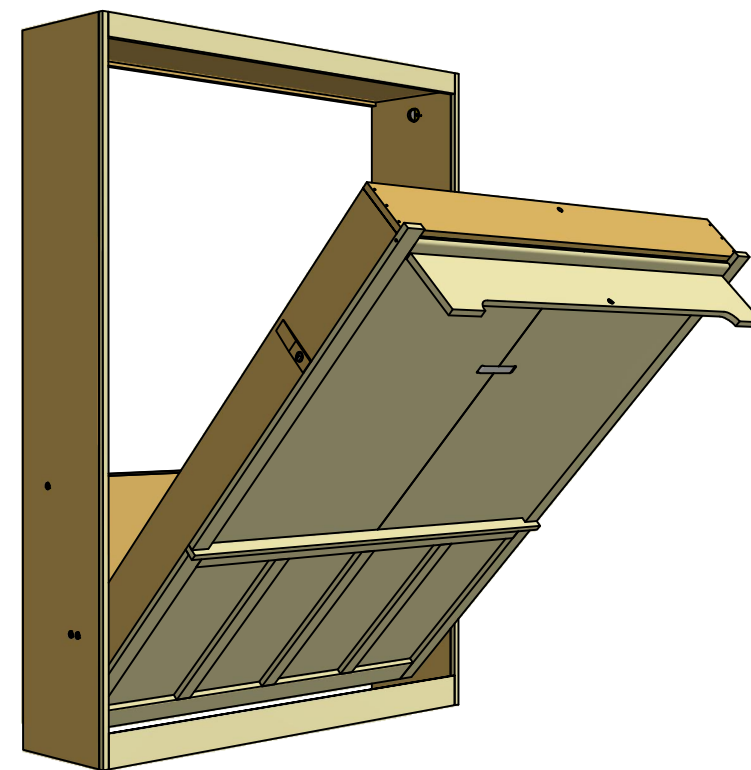
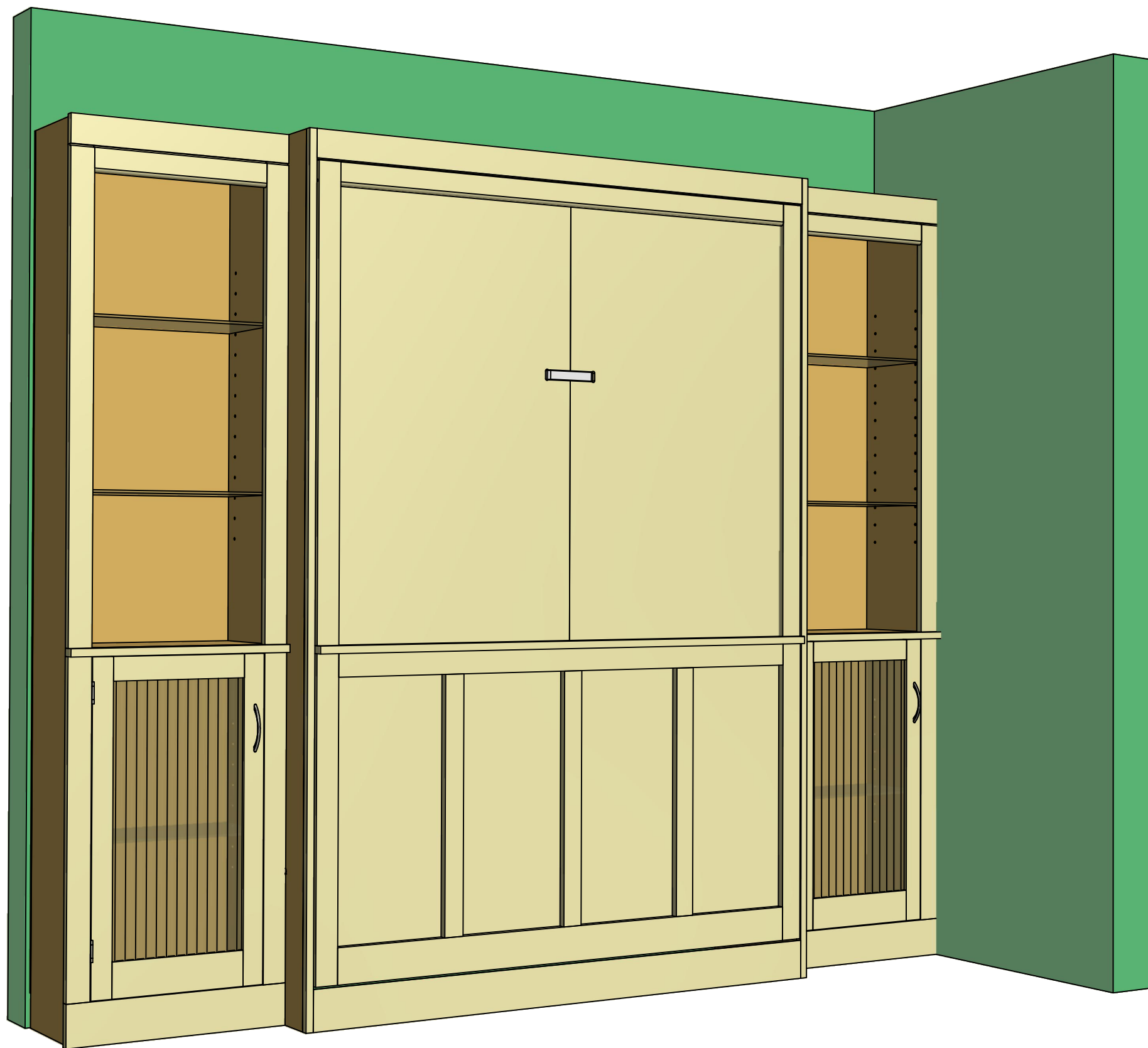


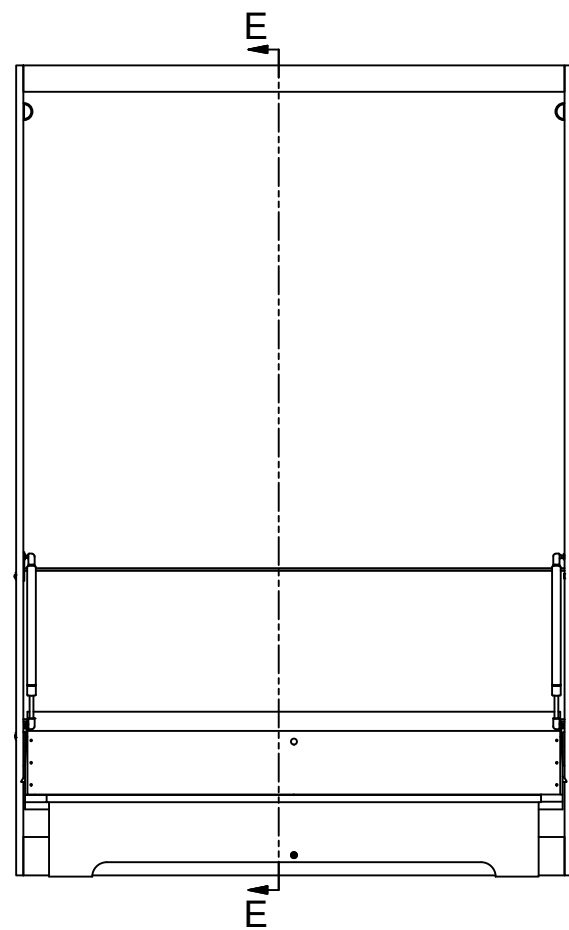
Woodsmith® PLANS

Shop Drawings

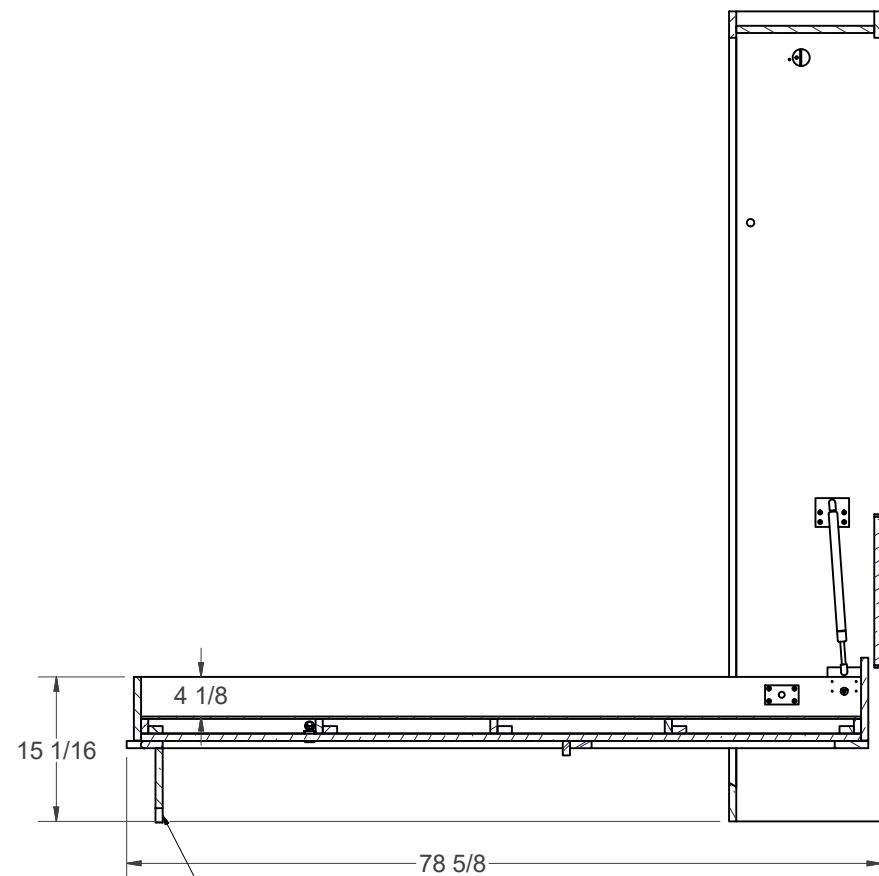


Murphy Bed



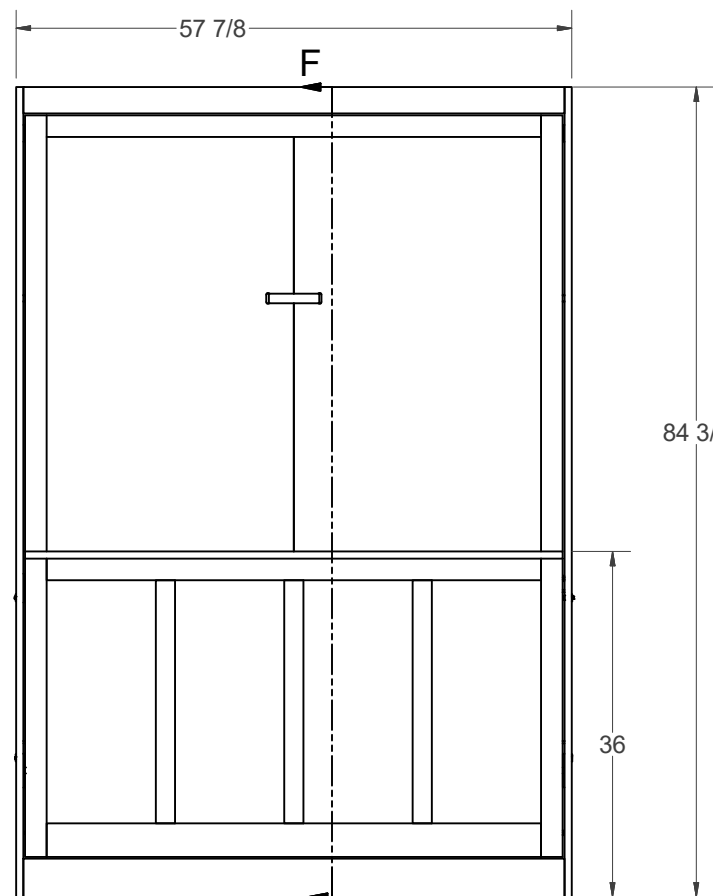


FRONT VIEW - BED OPEN

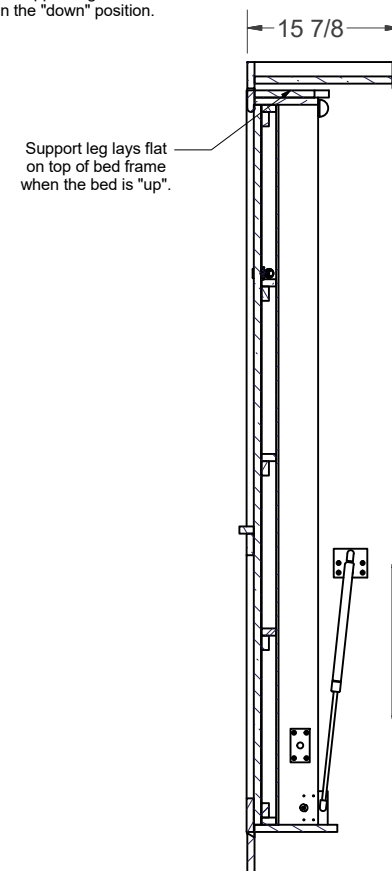


SECTION E-E

Support leg pivots forward as the bed is being lowered to act as a support leg when the bed is in the "down" position.

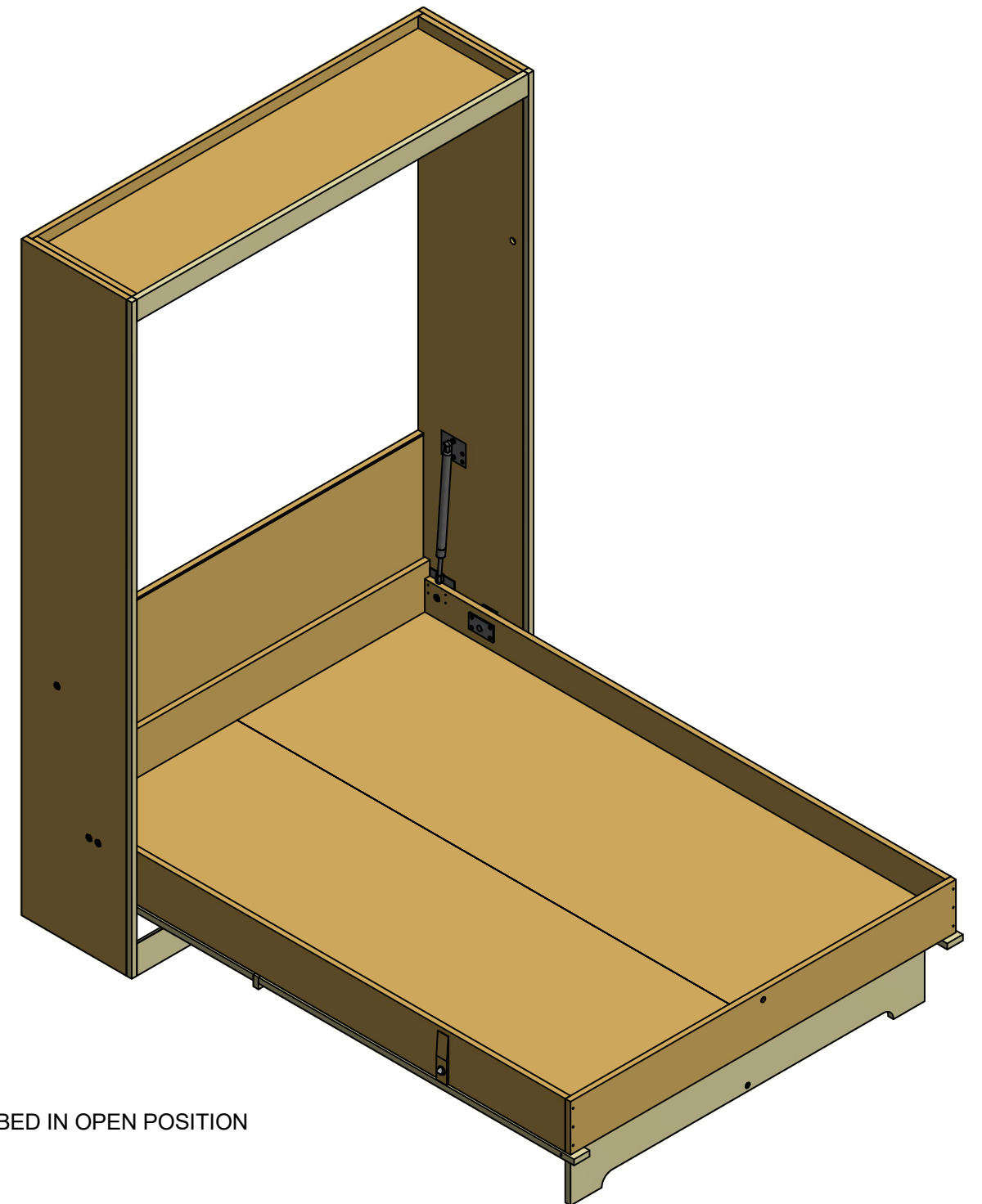


FRONT VIEW - BED CLOSED

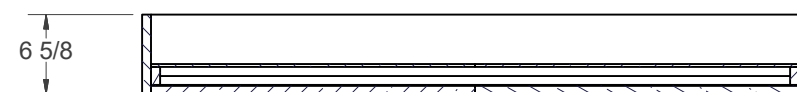
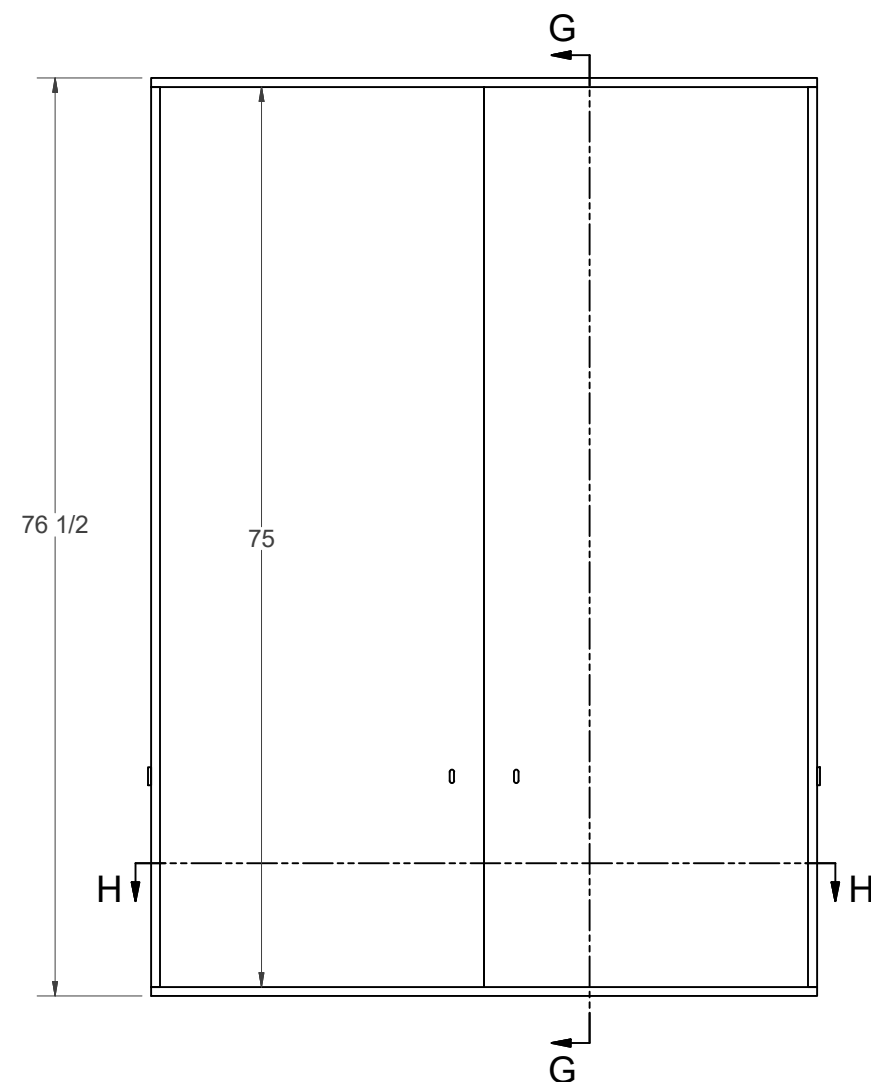


SECTION F-F

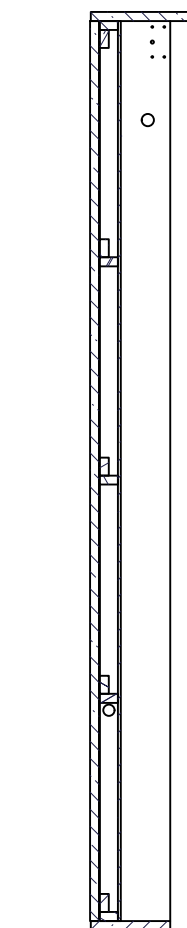
Support leg lays flat on top of bed frame when the bed is "up".



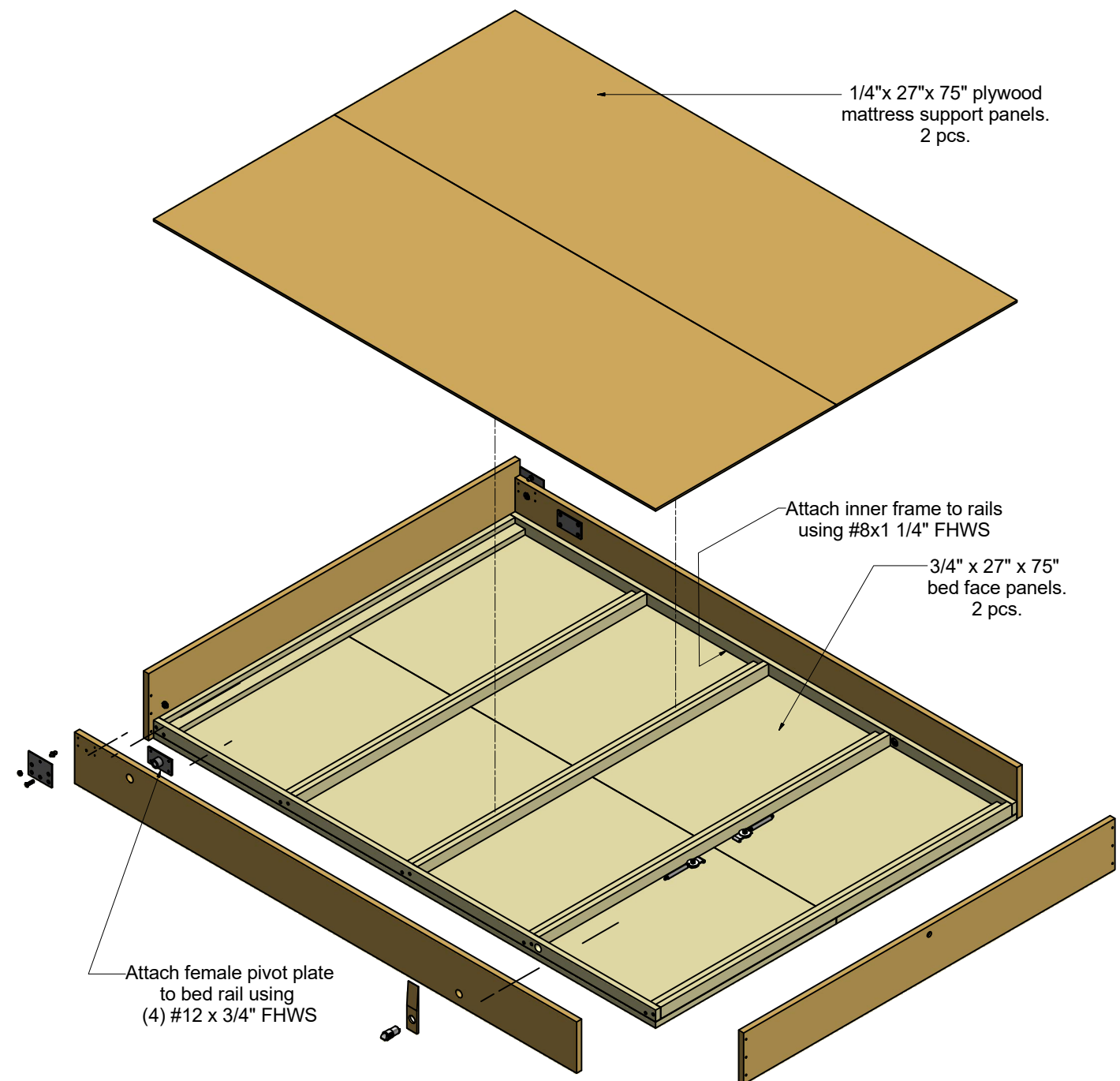
BED IN OPEN POSITION



SECTION H-H

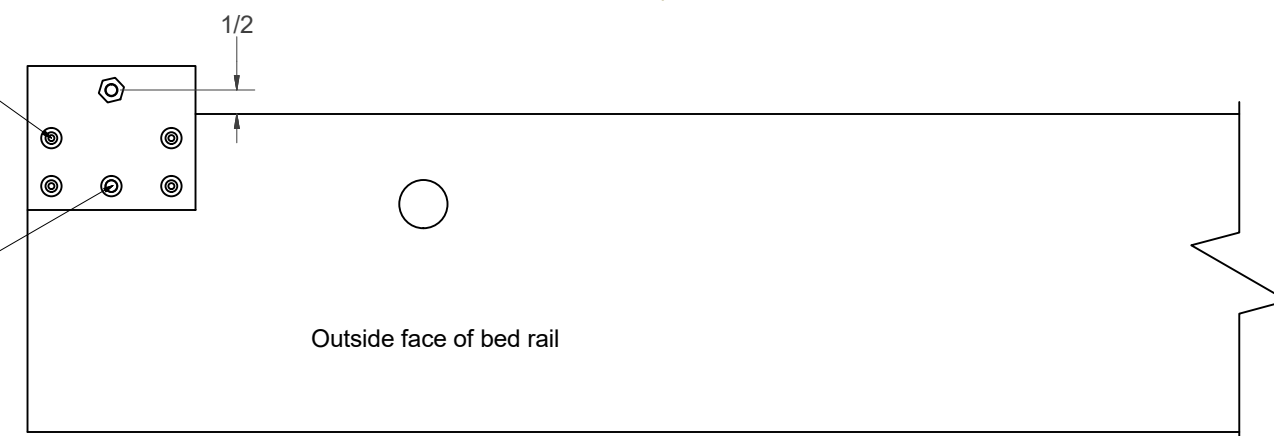


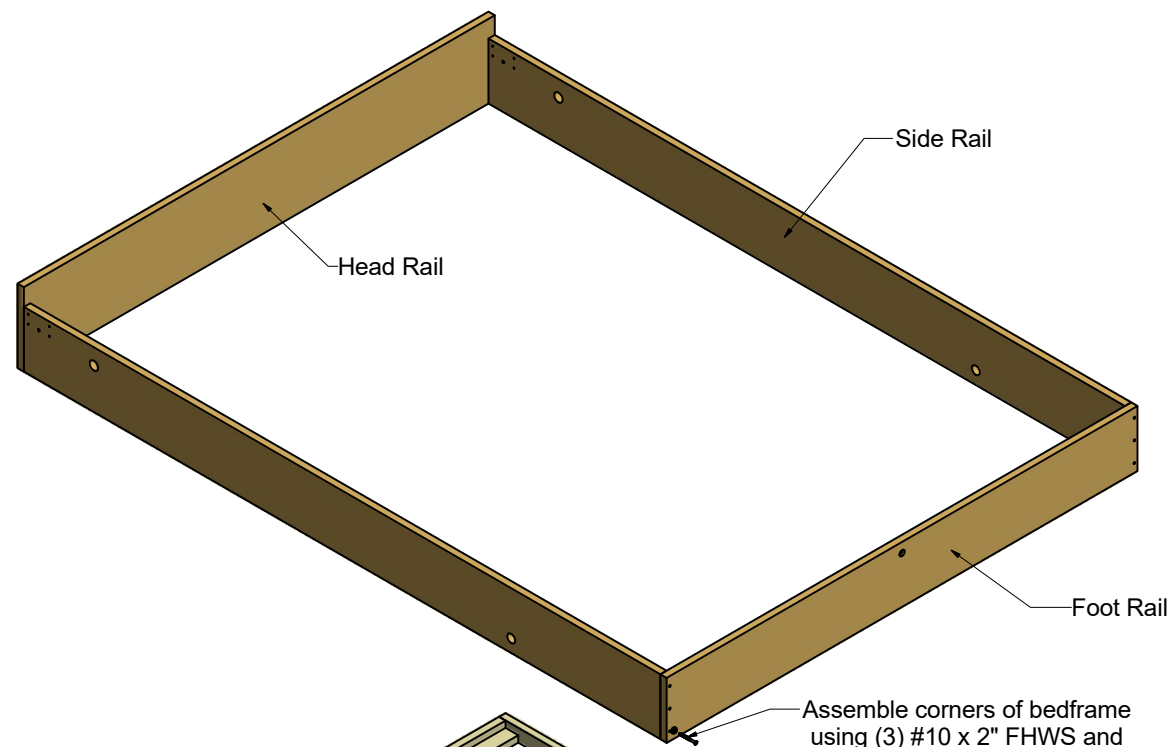
SECTION G-G



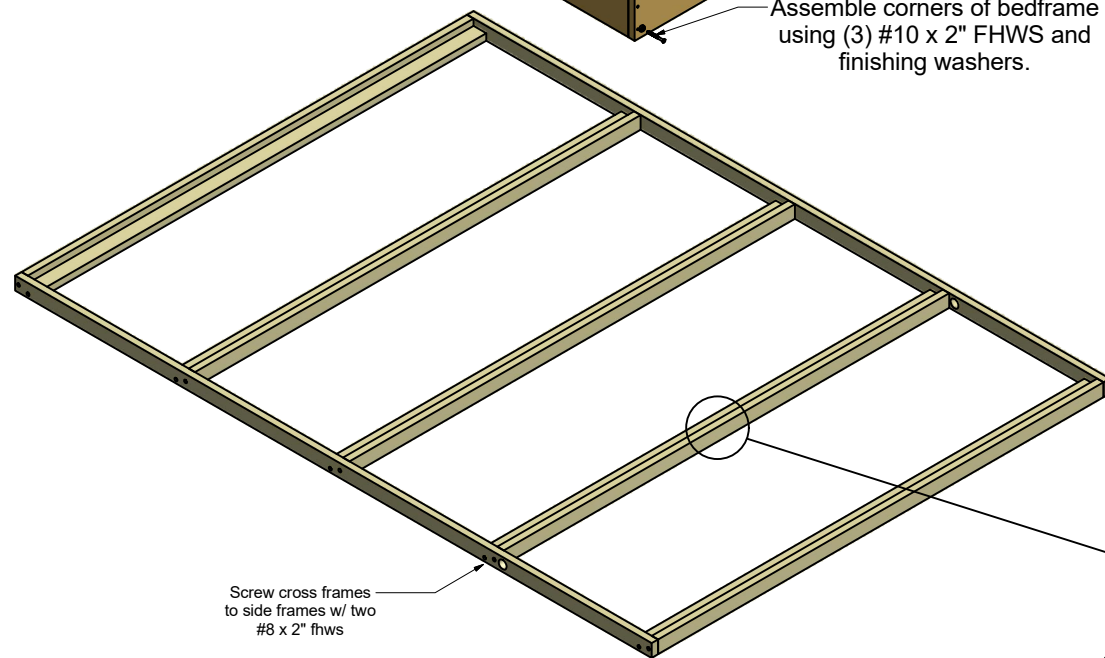
Attach lower plate to bedrails w/ (4) #10 x 3/4" FHWS.

Also attach lower plate w/ a 1/4" FHMS and T-nut on inside of rail

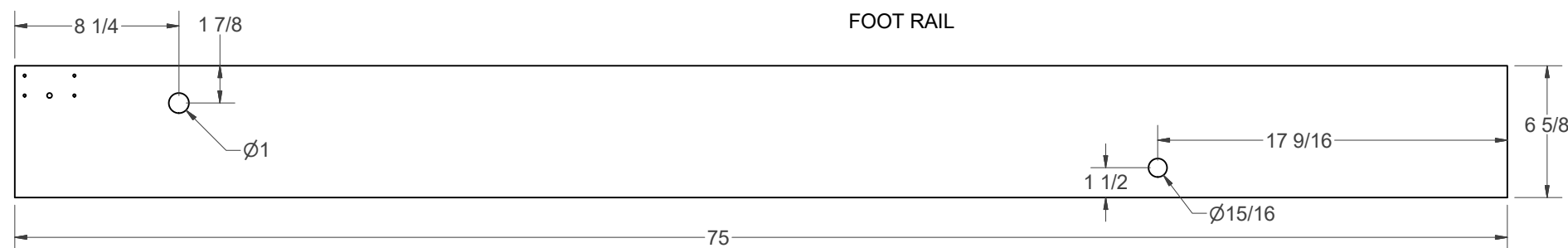
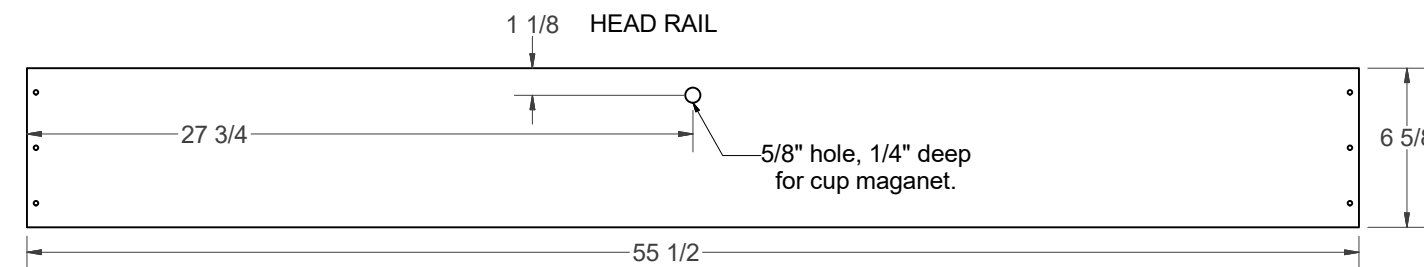
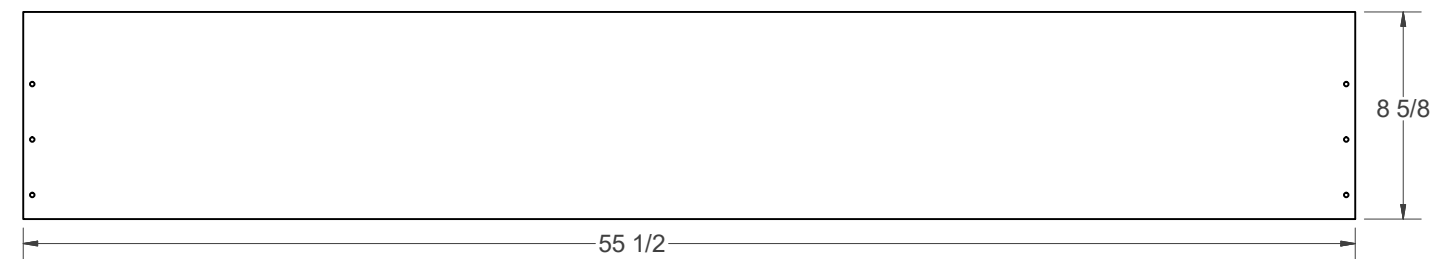
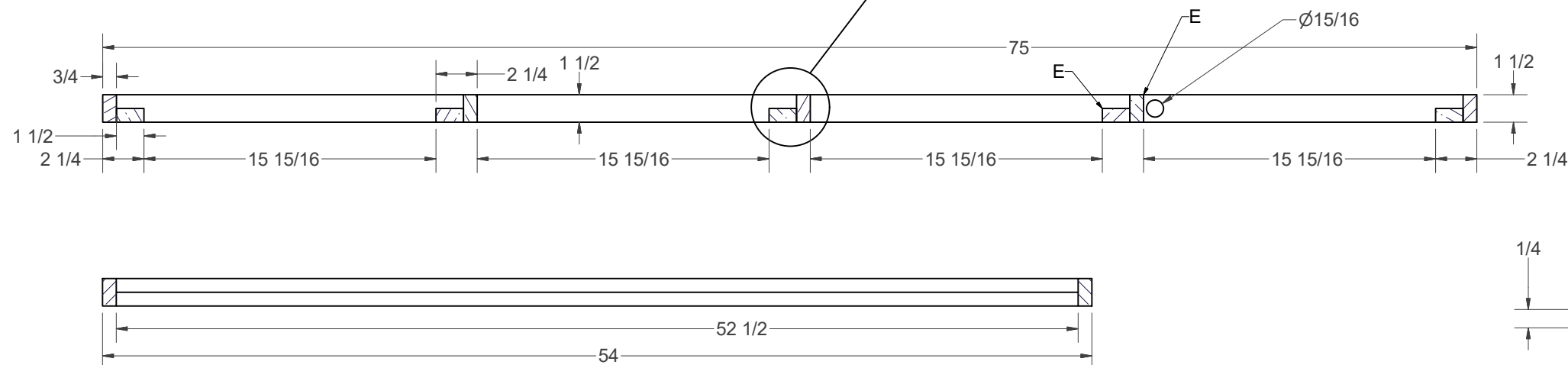




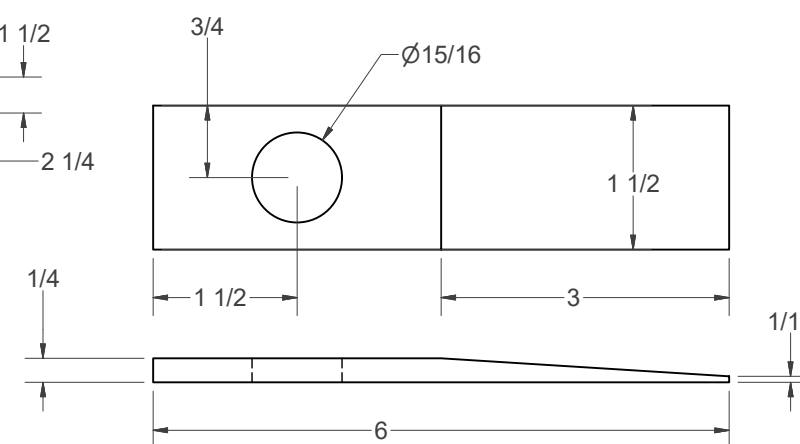
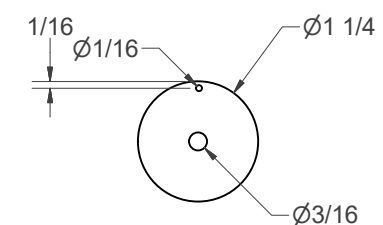
Assemble corners of bedframe using (3) #10 x 2" FHWS and finishing washers.

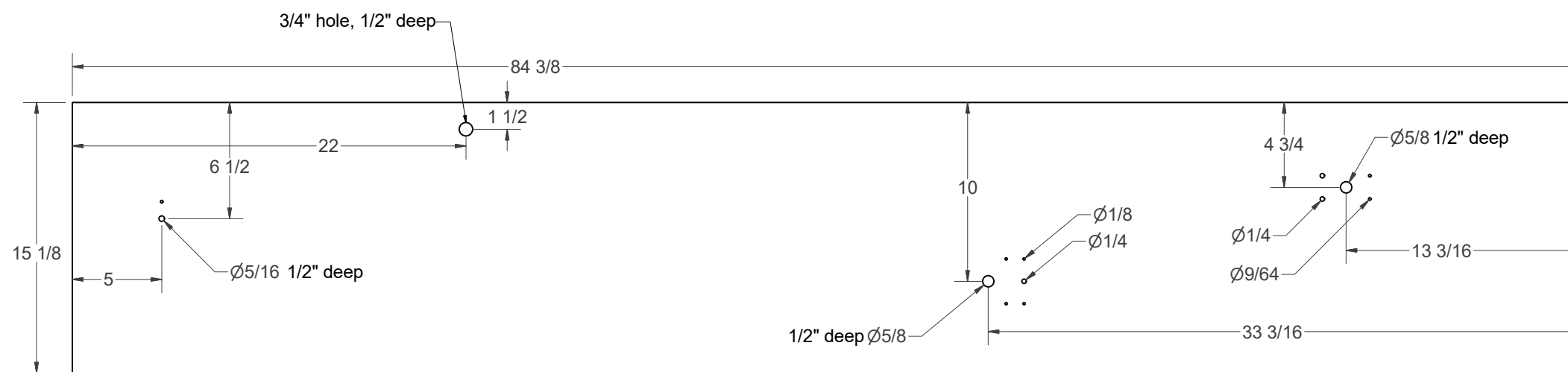
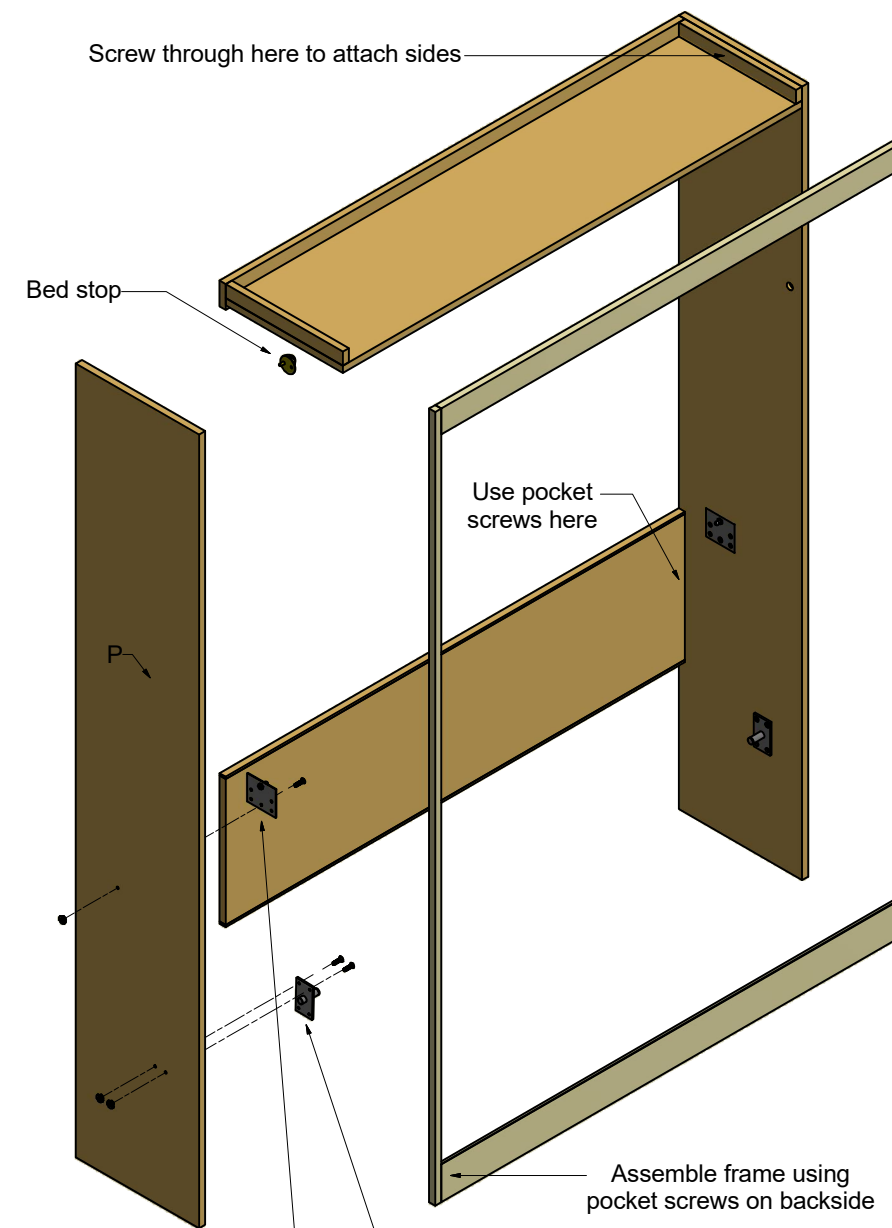
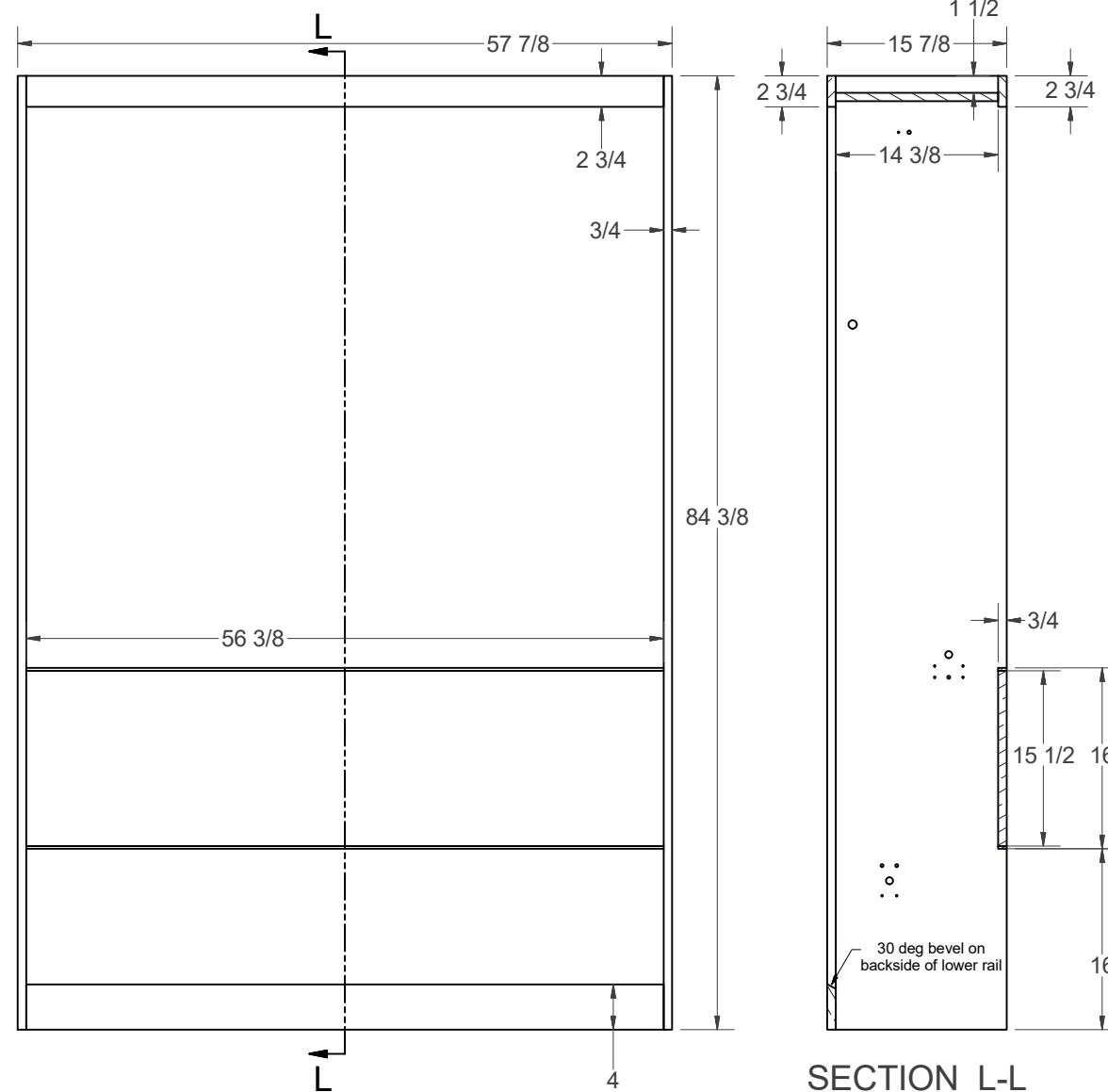
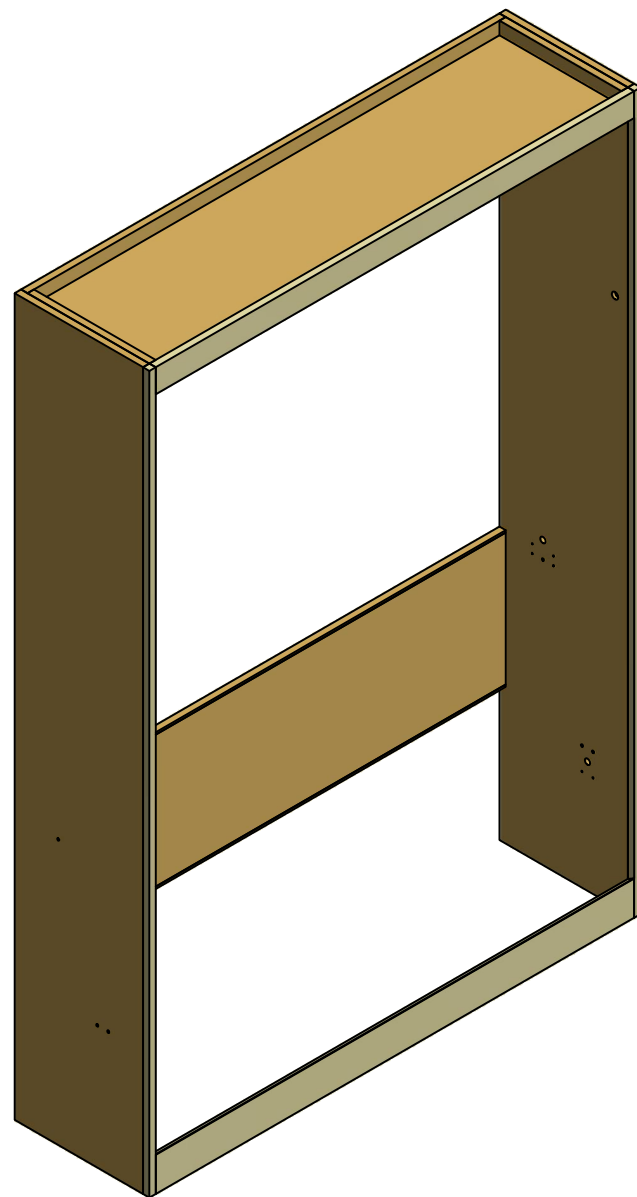


All cross frames are made using two 3/4 x 1 1/2 x 52 1/2" pieces of oak solid stock.

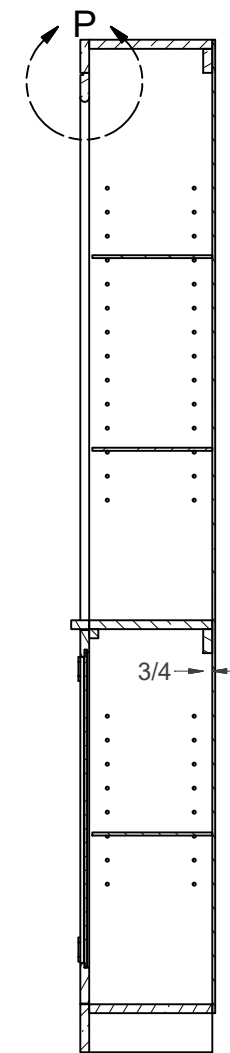
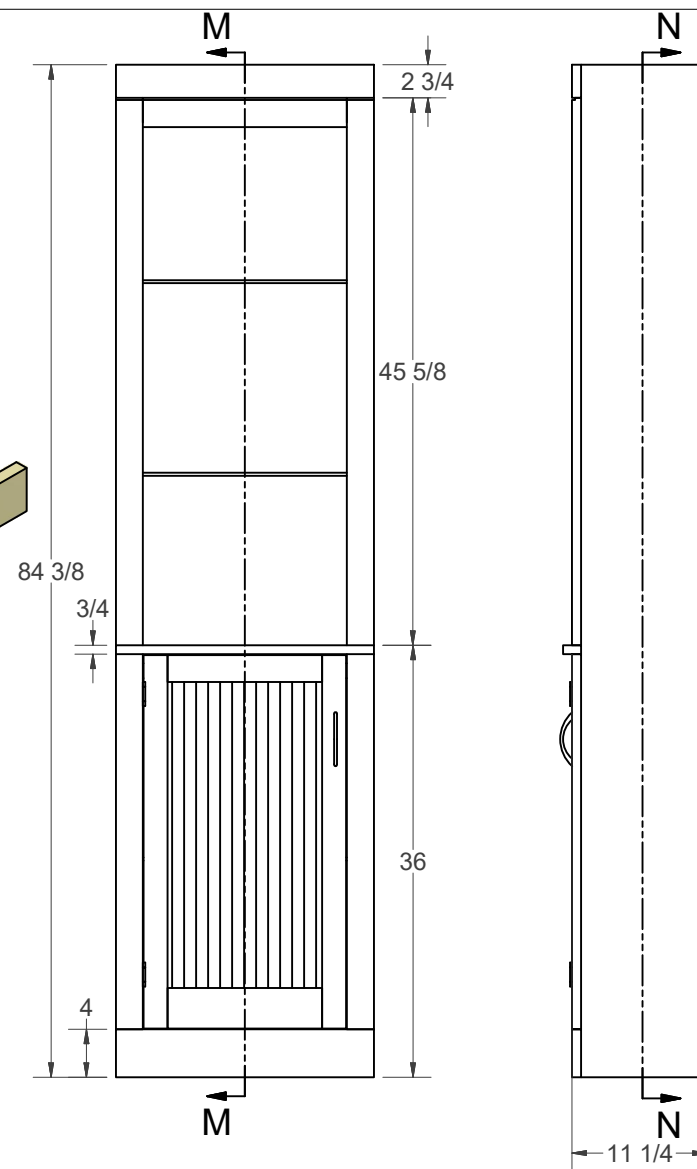
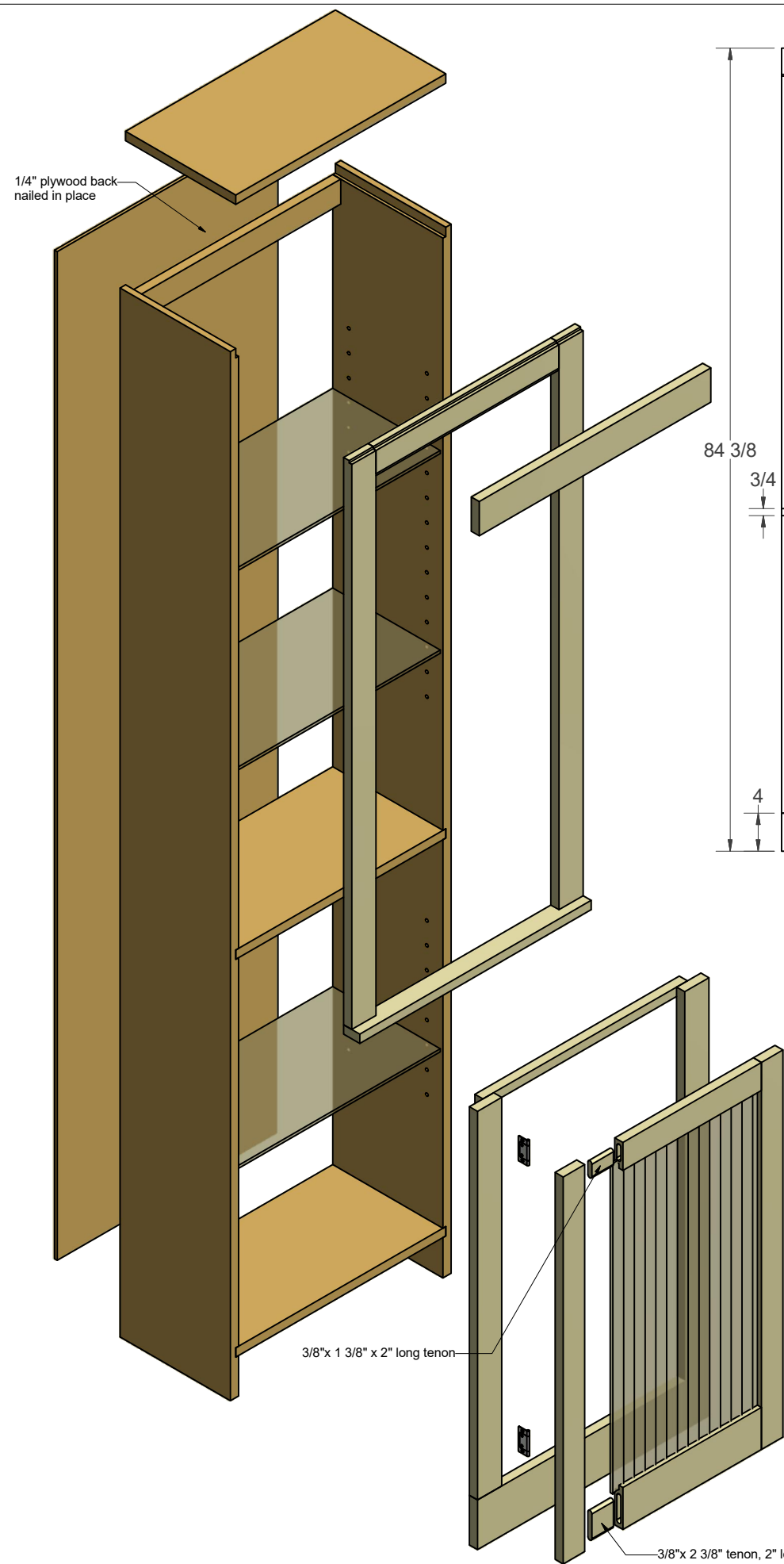


SIDE RAILS

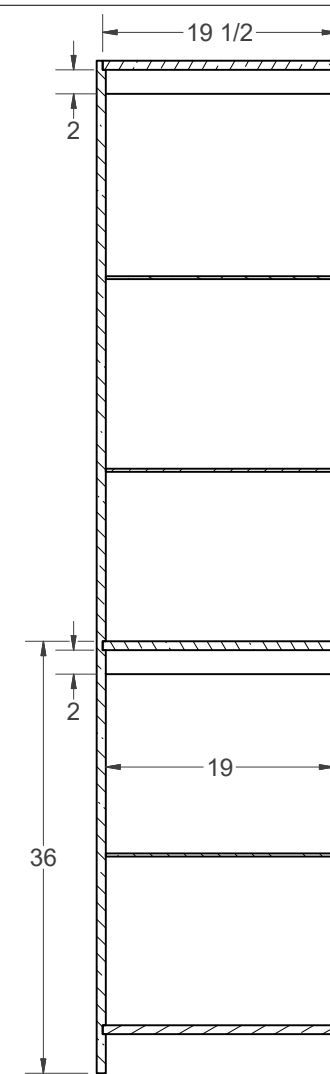




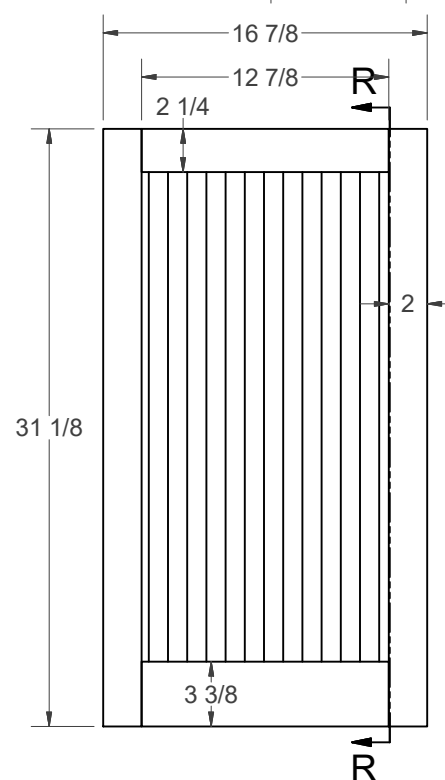
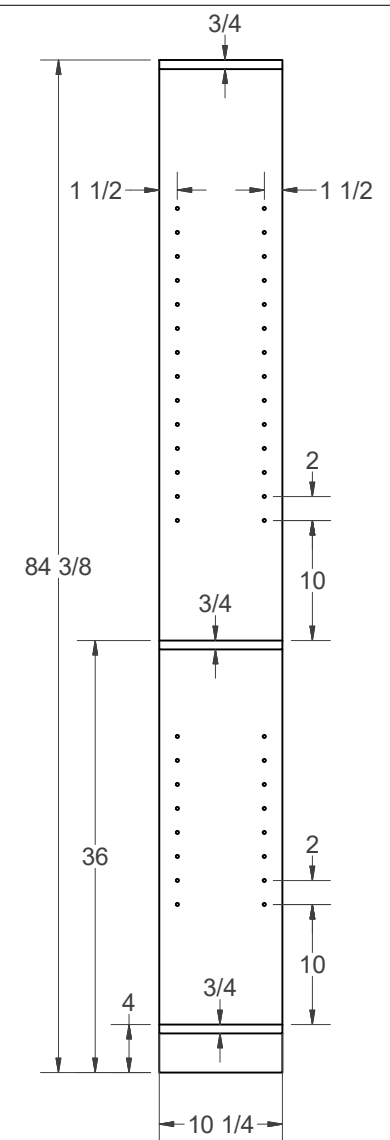
RIGHT HAND SIDE PANEL
(left panel is mirror image)



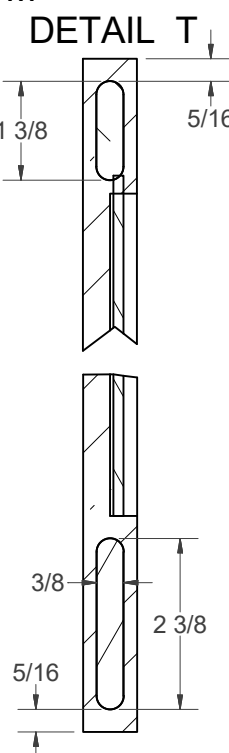
SECTION M-M



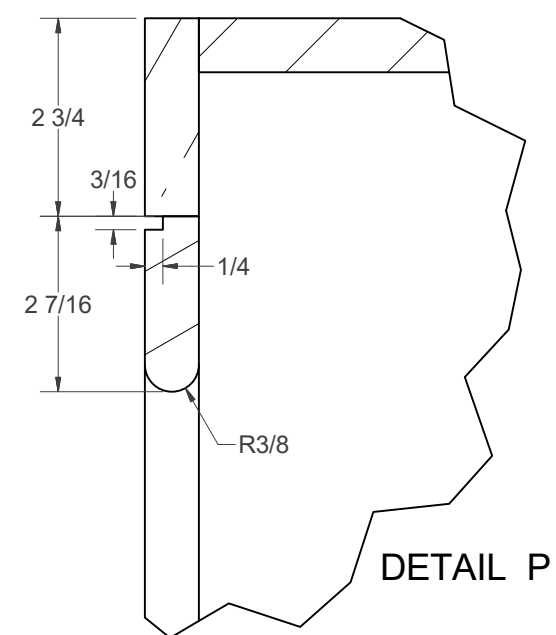
SECTION N-N



SECTION R-R



DETAIL U



DETAIL P