

SAFFRONART STUDIOS

presents

AN EXHIBITION OF CONTEMPORARY JEWELS

BY ANUJ SHAH
FROM THE HOUSE OF



UMRAO

7 – 12 DECEMBER 2018 | NEW YORK



EXHIBITION VIEWINGS

7 - 12 December 2018

11 am to 6 pm

VENUE

136 E 73rd Street, Second Floor

New York, NY 10021

For further enquiries, contact jewels@saffronart.com

Cover
Art Deco Emerald, Onyx and Diamond Necklace

This page
Emerald, Onyx and Diamond Bracelet

Back cover
Sapphire and Diamond Earrings

Anuj Shah's Jewels by Umrao

Umrao is an established Indian jewellery house known for their exquisite designs and superior craftsmanship. Founded in the early 1900s by Shri Umrao Mal Shah, a reputed gem trader based in Jaipur, UMRAO specialises in traditional *jadau* jewellery. **Jewels by Umrao** is a brand created by young designer Anuj Shah, who brings his own unique and modern touch to Umrao's traditional craft. Created with the latest cutting-edge techniques to produce innovative and fresh designs, he specialises in *pavé*, the modern technique of setting through microscopes, whereby the smallest stones are set so close together, that they form a veritable 'pavement' of jewels. He is inspired by all aspects of the world around him, including motifs from Indian and Western art, architecture, fashion and music. His Modernist sensibility leads him to incorporate unusual combinations of materials and styles to create striking and unusual pieces that can be conversation starters. Jewels by Umrao, the first in the Saffronart Studios series, features a selection from Shah's extensive collection which covers a wide range of stones, styles, and settings, offering a bouquet of jewellery to match every taste and occasion.

About Saffronart

Saffronart Studios is a travelling trunk series that brings the work of contemporary Indian designers to a wider market, offering a window to the finest in talent and craftsmanship across the artistic spectrum.

Founded in 2000 by Minal and Dinesh Vazirani, **Saffronart** is a leading international auction house, and India's most reputed, with over two hundred auctions to its credit. Its flagship gallery is in Mumbai, with offices in New Delhi, London and New York. At the forefront of selling Indian art, Saffronart has, over the past 18 years, held online and live auctions, exhibitions, and Dialogues in Art, working with collectors, gallerists and artists to develop a strong market for art and aesthetics. Its focus is to bring transparency to the auction process, and provide easy access and information to collectors around the world. Saffronart's services go beyond auctions to include private sales, appraisals and valuations for clients. Its biennial jewellery conference brings designers, historians, scholars, and collectors together at a forum to celebrate all aspects of jewellery as an art.



PAIR OF EMERALD AND DIAMOND EARRINGS

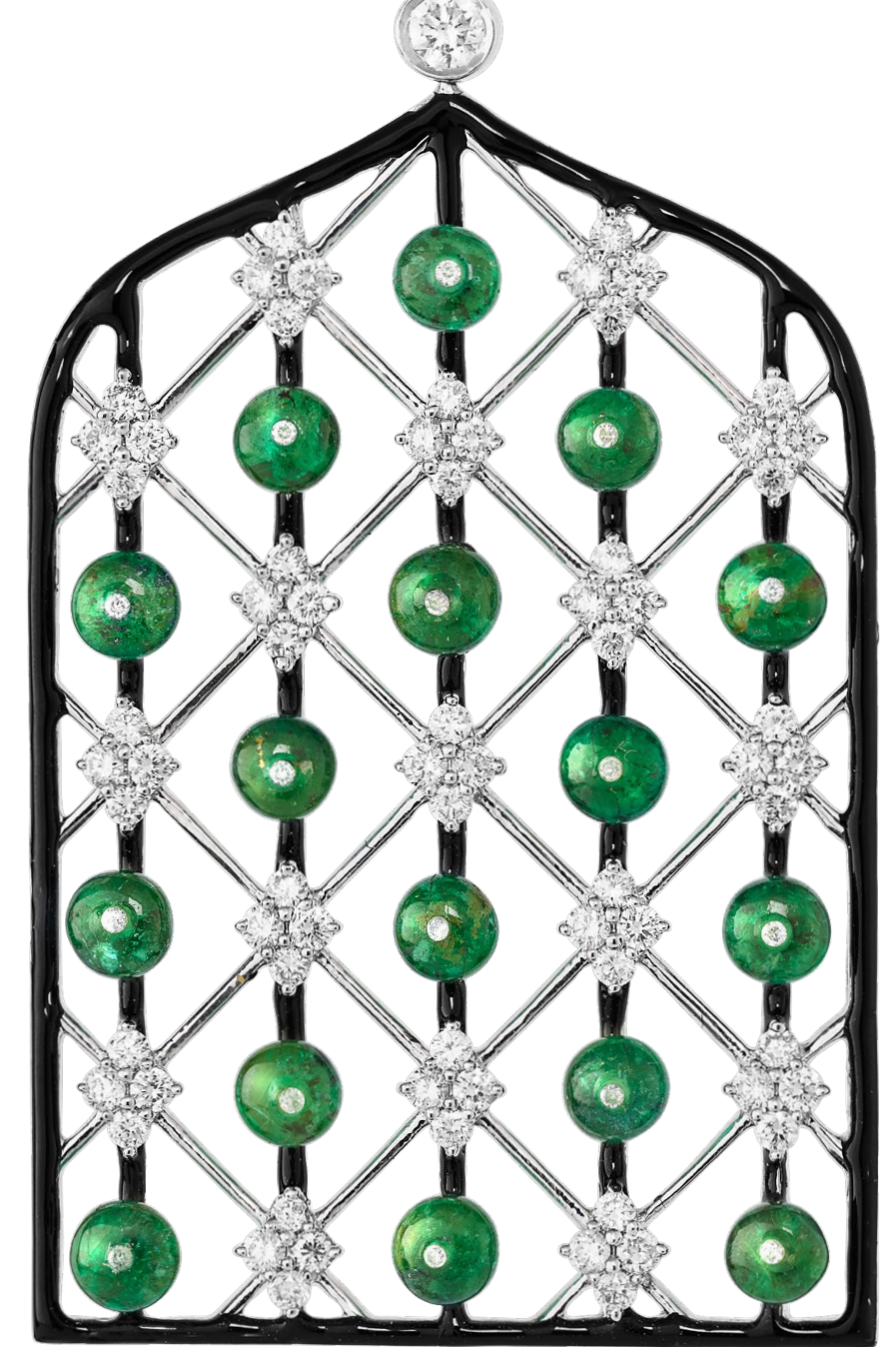
Of an openwork style, the earrings have diamond clusters and emerald beads set in an open frame with black enamel, suspending from a diamond-set surmount.

Inspired by Architecture

Form

Decorative details

Structure



Jaalis Decorative Arabesque

PEARL AND DIAMOND BRACELET

With an intricate rectangular openwork plaque as the clasp, it is set in repeating patterns of six vertical diamond-set flower heads with alternating rows of full-cut diamonds and pearls; set to several rows of keshi pearls.



TURQUOISE, ONYX AND DIAMOND EAR PENDANTS

Of a paisley design, each earring centres on a circular turquoise cabochon with a two-tier surround of full-cut diamonds and black onyx, to a similarly designed surmount with full-cut diamonds, onyx and sapphire cabochon.





Structure
Form
Decorative



SAPPHIRE AND DIAMOND EAR PENDANTS

Each earring is a sphere of sapphires in reverse setting with the pavilions facing outward, to a three-tiered surmount of diamond-set hemispheres, with a smaller diamond-set hemisphere below the sapphire sphere, mounted in gold.



EMERALD, ROCK CRYSTAL, ONYX AND DIAMOND BRACELET

Comprising six similarly designed octagonal links of carved rock crystal with stepped outline, enclosing a rectangular emerald in prong-setting, with a two-tiered surround of full-cut diamonds and black onyx. The six links are interspersed with smaller links of full-cut diamonds, to a similarly designed clasp with three rows of full-cut diamonds.

ROCK CRYSTAL, EMERALD AND DIAMOND PENDANT

Centring on a carved rock crystal plaque with a diamond-set surround with a similarly designed cluster of an emerald cabochon and diamonds. Attached to a black cord and diamond-set rondelles.



Inspired by the Melodies of Music

Raaga
Classical
Structure



Inspired by the Movements of Dance

Spiritual
Fluidity
Harmony



MULTI-GEM TASSEL PENDANT

Composed as a multi-layered pendant centring on a rectangular emerald with a surround of an octagonal plaque of rock crystal. The plaque is lined by four bullet-shaped openwork plaques set with full-cut diamonds, enclosing a string of sapphire beads. The pendant suspends a pearl tassel and smaller units of onyx, sapphires and diamonds. Attached to a chain of rectangular diamond-set spacers, emerald beads and pearls.

ROCK CRYSTAL, SAPPHIRE, ONYX AND DIAMOND EARRINGS

Geometric and classy, the earrings suspend a rectangular rock crystal plaque with steps along the edges, enclosing illusion-set diamond baguettes, with a two-tier surround of full-cut diamonds and rectangular sapphires; to a similarly designed square surmount.





Inspired by the Notes of Music

Jazz
Ripples
Concentric

PEARL AND DIAMOND EARRINGS

Of a flower-head surmount of five pearls and full-cut diamonds, suspending five similarly designed concentric rings of full-cut diamonds and pearls, in white gold.





Inspired by the Silver Screen

Hollywood Legends
Fashion
Splendour

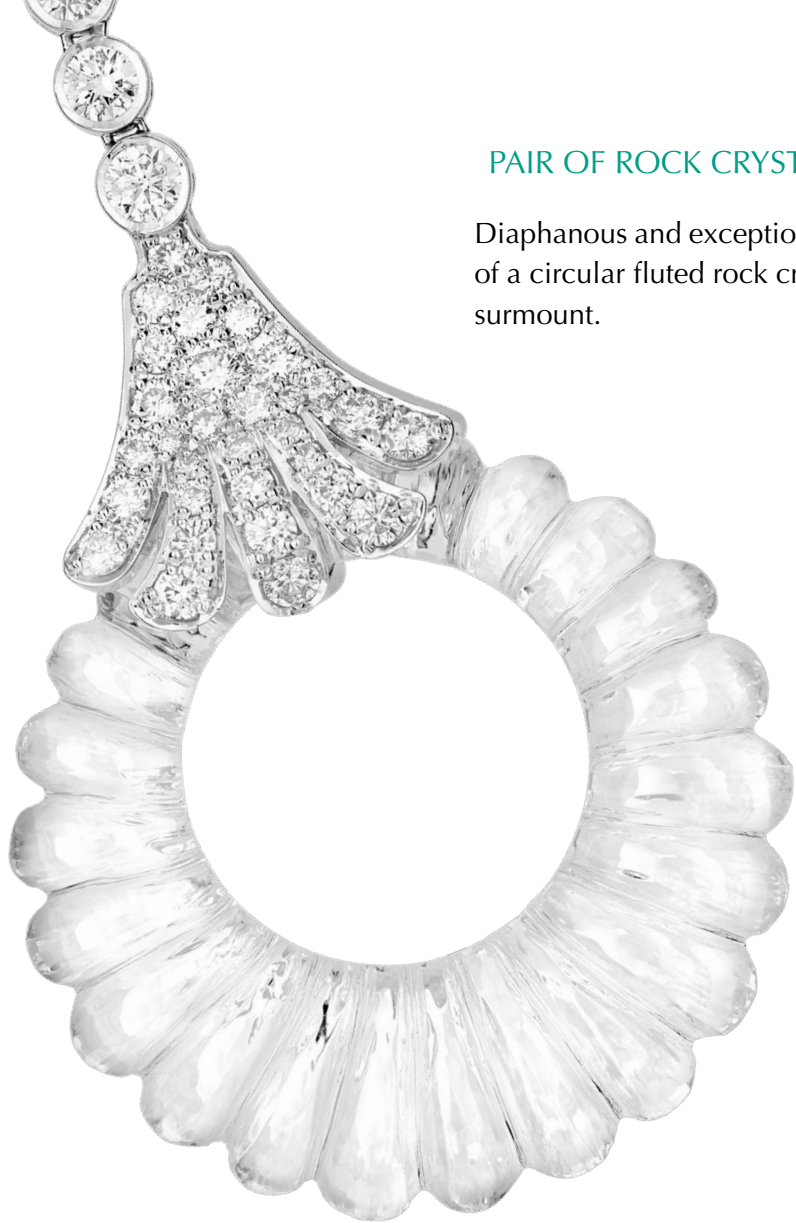


PAIR OF SAPPHIRE AND DIAMOND EAR PENDANTS

Each earring is a metal plaque with four petal-like outlines, with each petal curving slightly inwards, set with sapphires in micro-*pavé* style. Four diamond-set openwork arches radiate from each of the four petals and meet at the centre, set with a pear-shaped diamond.

PAIR OF ROCK CRYSTAL AND DIAMOND EARRINGS

Diaphanous and exceptionally crafted, these earrings comprise of a circular fluted rock crystal suspending from a diamond-set surmount.



Glamour
Hollywood Icon
Fashion



Shimmer
Classic
Cleopatra



PAIR OF GOLD AND DIAMOND EARRINGS

Each designed as a tapering cascade of gold feathers in brush finish, comprising of full-cut diamonds at the tip of each feather, suspending from a diamond-set surmount.





OPAL, EMERALD AND DIAMOND EARRINGS

Each consisting of a black onyx hemisphere with sporadically-placed bezel-set diamonds on the body and along both the edges, suspended from bezel-set diamonds and an emerald bead, further suspending a tapering bunch of opal beads.

Unique
Iridescent
Style





ROCK CRYSTAL, ONYX AND DIAMOND EARRINGS

Comprising of an octagonal plaque with concentric layers of black onyx, *pavé*-set diamonds and carved rock crystals, centring on illusion-set diamond baguettes with a diamond-set surround, attached to a similarly designed surmount.

Inspired by the *Art Deco* Aesthetic

Vintage
Clean lines
Geometry



Art Deco
Stylised
1920s

PAIR OF LAPIS LAZULI AND DIAMOND EARRINGS

Each earring is a geometric openwork of lapis lazuli, suspended from a bezel-set diamond, further suspending two diamond-set units and a gold sphere.



Vintage
Art Deco
Sleek



EMERALD, ROCK CRYSTAL, ONYX AND DIAMOND PENDANT

Centring on a rectangular emerald with a diamond-set surround, set within a rock crystal plaque with an octagonal stepped outline, to a three-tier surround of full-cut diamonds and black onyx; suspended from a gold chain with rose-cut diamond spacers.

ROCK CRYSTAL, ONYX, EMERALD AND DIAMOND BROOCH

The brooch is centred on an octagonal plaque with a bezel-set diamond, with a similarly shaped outer surround of black onyx. An arrow set with black onyx and full-cut diamonds appears to pierce through the brooch. The brooch suspends flexible diamond-set units and a carved emerald drop.





MOTHER-OF-PEARL AND DIAMOND EAR PENDANTS

Each earring comprises of a mother-of-pearl plaque in a semi-circular shape with an undulating outer edge. The outer edge is lined with full-cut diamonds and five pearls, while the inner edge has a similarly styled plaque of full-cut diamonds in *pavé* setting.



1920s
Streamlined
Automobiles



SAFFRONART
STUDIOS
saffronart.com