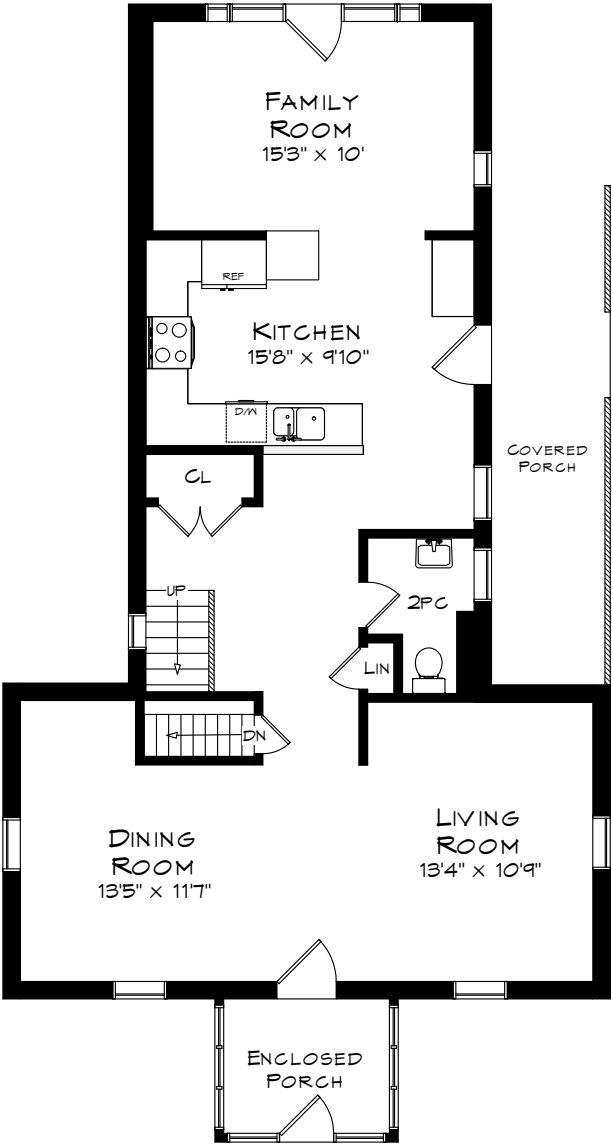
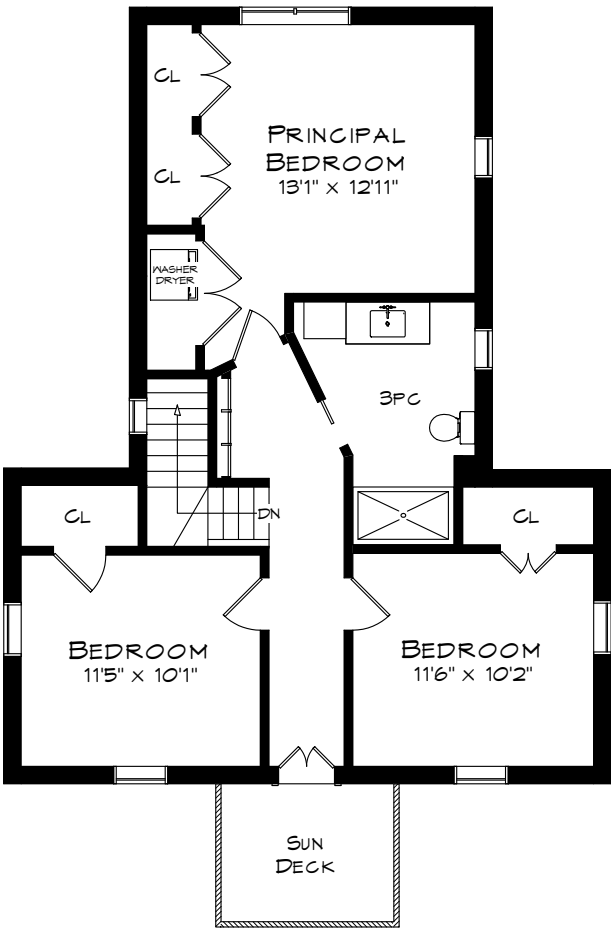


331 TRAFALGAR ROAD

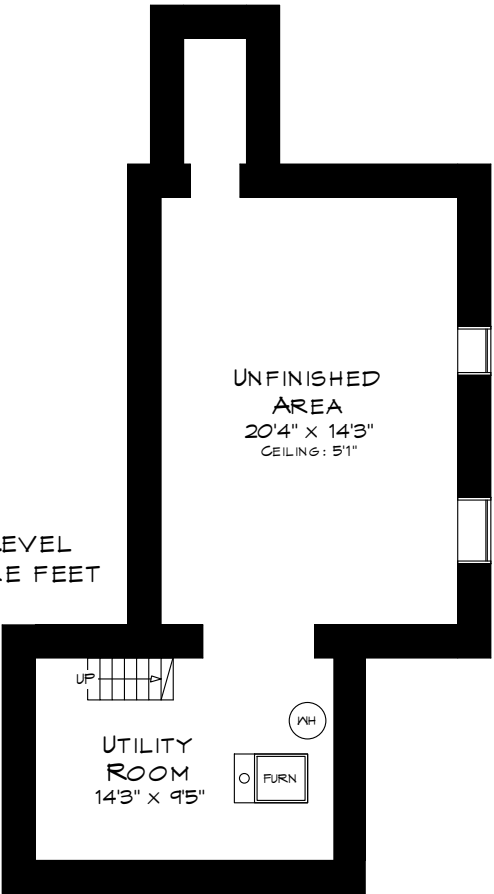
TOTAL SQUARE FOOTAGE
2,485 SQ.FT.



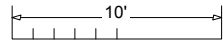
MAIN LEVEL
1,000 SQUARE FEET
+ 60 SF (PORCH)



UPPER LEVEL
821 SQUARE FEET



LOWER LEVEL
664 SQUARE FEET



Measurements may not be 100% accurate
and should be used as a guideline only.
October - 2020