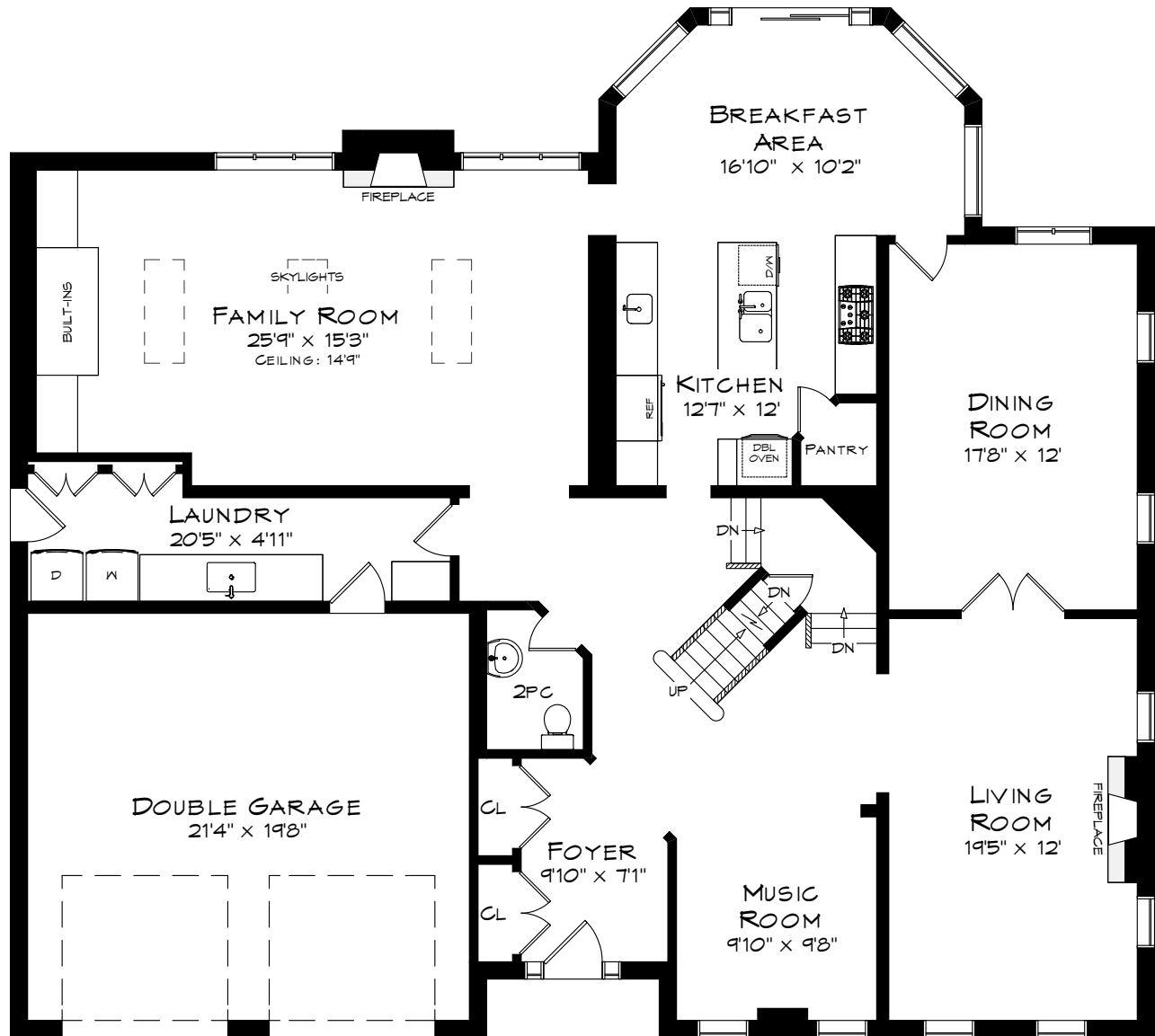
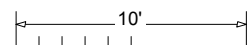


1377 GREENEAGLE DRIVE

TOTAL SQUARE FOOTAGE
5,883 SQ.FT.



MAIN LEVEL
1,968 SQUARE FEET
+ 459 SF (GARAGE)

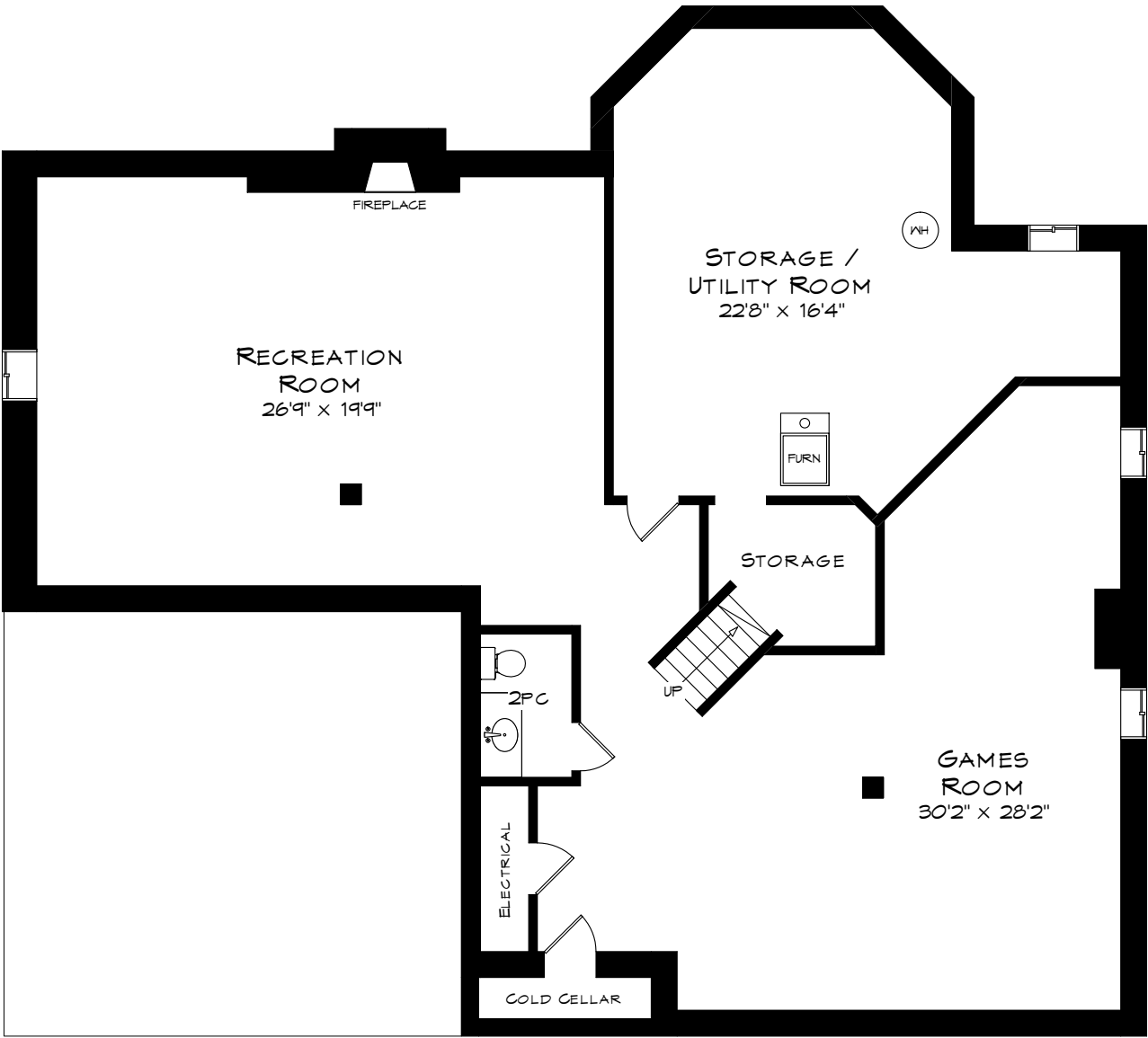


Measurements may not be 100% accurate
and should be used as a guideline only.
October - 2020

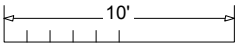
Floor plan of a 5-bedroom house. The layout includes a Principal Bedroom (22'4" x 16'11") with built-ins and a walk-in closet. A central hallway provides access to four other bedrooms: a large Bedroom (17'3" x 11'3"), a medium Bedroom (16'6" x 11'), a small Bedroom (12'4" x 12'), and another medium Bedroom (15'9" x 9'11"). The plan also features a 4PC, a 5PC ensuite, and a 5PC. A linen closet and a walk-in closet are also shown. The house has skylights and a central staircase with 'DN' (down) directions. A note 'OPEN TO BELOW' is present near the staircase.

Measurements may not be 100% accurate
and should be used as a guideline only.
October - 2020

1377 GREENEAGLE DRIVE



LOWER LEVEL
1,995 SQUARE FEET



Measurements may not be 100% accurate
and should be used as a guideline only.
October - 2020