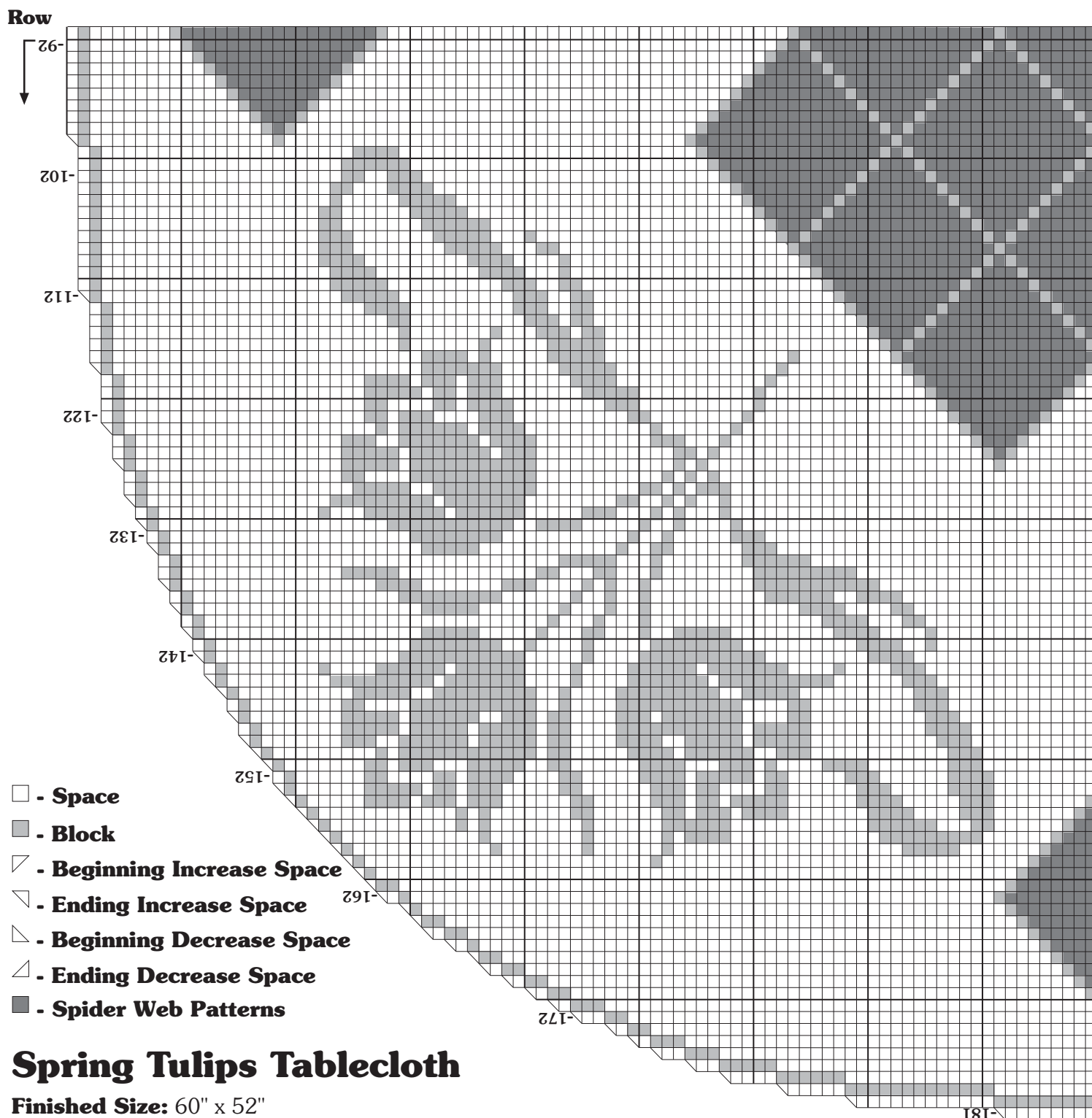


Spring Tulips Tablecloth



Design by Luella Cartwright

Approx Size: 60" x 52"



Spring Tulips Tablecloth

Finished Size: 60" x 52"

MATERIALS

Bedspread Weight Cotton Thread (size 10)
[225 yards per ball]:
Ecru - 15 balls
Steel crochet hook, size 1 (2.75 mm) or
size needed for gauge

GAUGE: In pattern, 9 ch-2 sps
and 10 rows = 3"

BASIC CHART STITCHES

Beginning Increase Space: Dc in seventh ch from
hook.

Block over Space: 2 Dc in next ch-2 sp, dc in next st.

Space over Block: Ch 2, skip next 2 dc, dc in next dc.

Space over Space: Ch 2, skip next 2 chs, dc in next st.

Block over Block: Dc in next 3 dc.

Beginning 2-Space Increase: Ch 9, turn; dc in
seventh ch from hook, ch 2, skip next 2 chs, dc in next st.

Beginning 3-Space Increase: Ch 12, turn; dc in
seventh ch from hook, ★ ch 2, skip next 2 chs, dc in
next st; repeat from ★ once **more**.

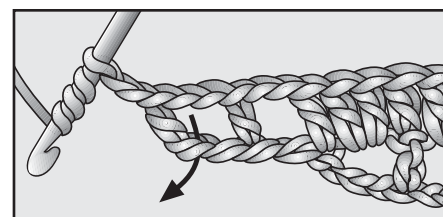
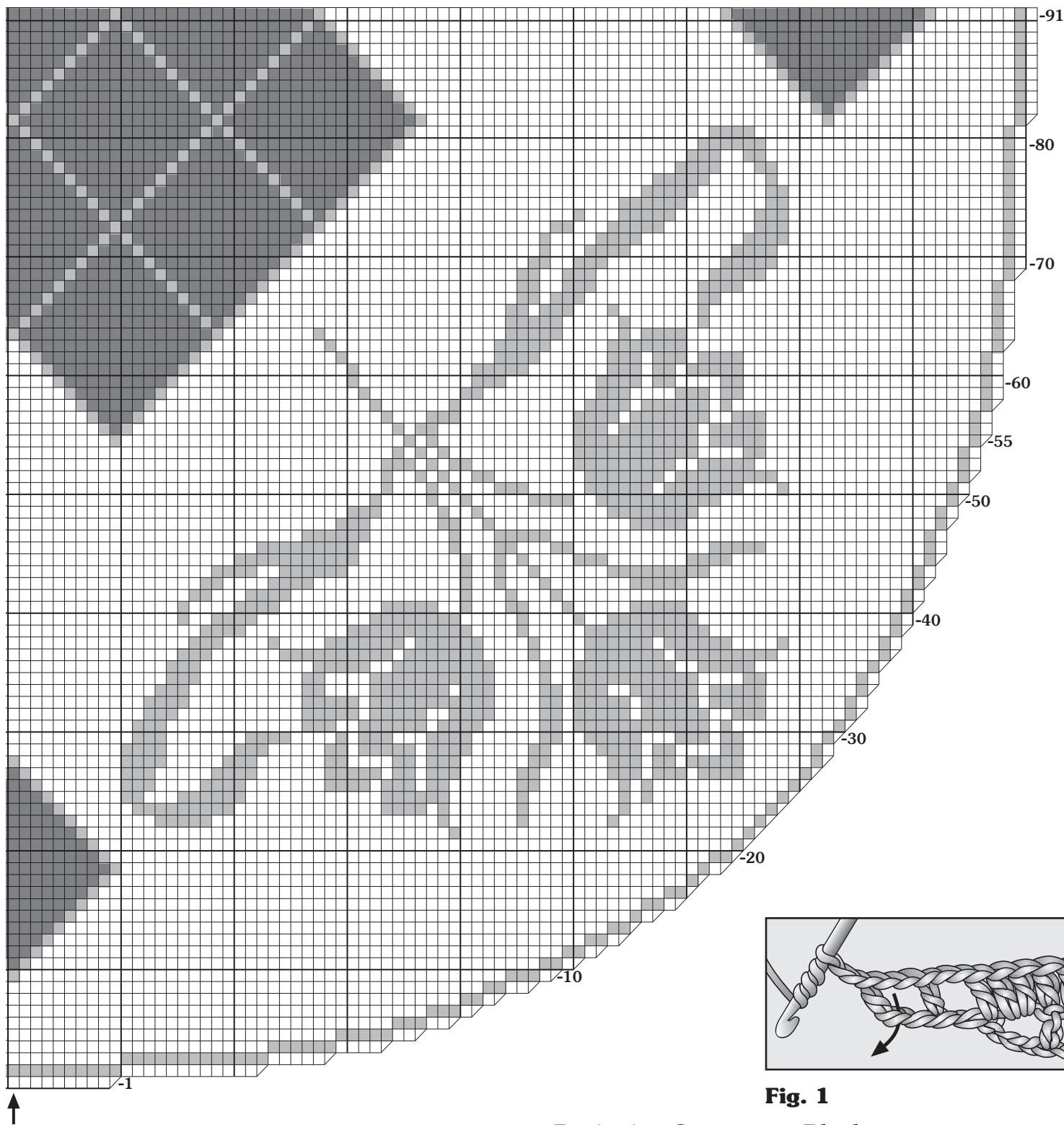


Fig. 1

To work *double treble crochet* (abbreviated *dtr*), YO 3 times, insert hook in st indicated, YO and pull up a loop, (YO and draw through 2 loops on hook) 4 times.

First Ending Increase Space: Ch 2, dtr in same st as last dc made.

Beginning Space over Space: Ch 5 (counts as first dc plus ch 2, now and throughout), turn; dc in next dc.

Ending Increase Space: Ch 2, dtr in side of last dtr made (see Fig. 1).

Beginning Space over Block:

Ch 5, turn; skip first 4 sts, dc in next dc.

Beginning Decrease Space over Space: Ch 4, turn; skip next ch-2 sp, dc in next dc.

Ending Decrease Space over Space: Skip last ch-2 sp, tr in last dc.

Beginning Decrease Space over Block: Ch 4, turn; skip first 4 sts, dc in next dc.

Ending Decrease Space over Block: Skip next 2 dc, tr in last dc.

BODY

To work treble crochet (*abbreviated tr*), YO twice, insert hook in st or sp indicated, YO and pull up a loop, (YO and draw through 2 loops on hook) 3 times.

Ch 58.

Row 1: Dc in seventh ch from hook (**Beginning Increase Space made**), ch 2, ★ skip next 2 chs, dc in next ch, ch 2; repeat from ★ across to last 3 chs, skip next 2 chs, (dc, ch 2, tr) in last ch: 19 Spaces.

Row 2 (Right side): Ch 42, turn; work Beginning Increase Space, ★ ch 2, skip next 2 chs, dc in next st; repeat from ★ 11 times **more**, work 19 Blocks, work First Ending Increase Space, work Ending Increase Space 12 times: 26 Spaces and 19 Blocks.

Note: Mark last row as **right** side.

Row 3: Ch 21, turn; work Beginning Increase Space, ★ ch 2, skip next 2 chs, dc in next st; repeat from ★ 4 times **more**, work 13 Blocks, work 19 Spaces, work 13 Blocks, work First Ending Increase Space, work Ending Increase Space 5 times: 31 Spaces and 26 Blocks.

Row 4: Ch 18, turn; work Beginning Increase Space, ★ ch 2, skip next 2 chs, dc in next st; repeat from ★ 3 times **more**, work 6 Blocks, work 45 Spaces, work 6 Blocks, work First Ending Increase Space, work Ending Increase Space 4 times: 55 Spaces and 12 Blocks.

Row 5: Work Beginning 3-Space Increase, work 5 Blocks, work 57 Spaces, work 5 Blocks, work First Ending Increase Space, work Ending Increase Space twice: 63 Spaces and 10 Blocks.

Rows 6-181: Follow chart, pages 2 and 3, working Single Spider Web in shaded areas on chart (beginning on Rows 10, 82, or 154) **and** Center Spider Webs in shaded area on chart (beginning on Row 55) being careful to follow chart on **each** side of Spider Webs. After Row 91, turn chart upside down and follow as indicated by arrows. Beginning on Row 164, slip st across to first dc of first Block as indicated by chart, then work Beginning Decrease Space.

At end of Row 181; do **not** finish off.

SINGLE SPIDER WEB

Row 1: Work Block over Space where Spider Web pattern begins.

Row 2: Work Block, ch 29, skip next 2 dc, dc in next dc, work Block.

Row 3: Work Block, ch 14, sc in next loop, ch 14, skip next 3 dc, dc in next dc, work Block.

Row 4: Work Block, ch 12, sc in next loop and in next sc, sc in next loop, ch 12, skip next 3 dc, dc in next dc, work Block.

Row 5: Work Block, ch 12, sc in next loop and in next 3 sc, sc in next loop, ch 12, skip next 3 dc, dc in next dc, work Block.

Row 6: Work Block, ch 10, sc in next loop and in next 5 sc, sc in next loop, ch 10, skip next 3 dc, dc in next dc, work Block.

Row 7: Work Block, ch 10, sc in next loop and in next 7 sc, sc in next loop, ch 10, skip next 3 dc, dc in next dc, work Block.

Row 8: Work Block, ch 12, sc in next loop and in next 9 sc, sc in next loop, ch 12, skip next 3 dc, dc in next dc, work Block.

Row 9: Work Block, ch 12, sc in next loop and in next 11 sc, sc in next loop, ch 12, skip next 3 dc, dc in next dc, work Block.

Row 10: Work Block, ch 14, sc in next loop and in next 13 sc, sc in next loop, ch 14, skip next 3 dc, dc in next dc, work Block.

Row 11: 3 Dc in next loop, ch 12, skip next sc, sc in next 13 sc, ch 12, 3 dc in next loop, dc in next dc.

Row 12: 3 Dc in next loop, ch 12, skip next sc, sc in next 11 sc, ch 12, 3 dc in next loop, dc in next dc.

Row 13: 3 Dc in next loop, ch 10, skip next sc, sc in next 9 sc, ch 10, 3 dc in next loop, dc in next dc.

Row 14: 3 Dc in next loop, ch 10, skip next sc, sc in next 7 sc, ch 10, 3 dc in next loop, dc in next dc.

Row 15: 3 Dc in next loop, ch 12, skip next sc, sc in next 5 sc, ch 12, 3 dc in next loop, dc in next dc.

Row 16: 3 Dc in next loop, ch 12, skip next sc, sc in next 3 sc, ch 12, 3 dc in next loop, dc in next dc.

Row 17: 3 Dc in next loop, ch 14, skip next sc, sc in next sc, ch 14, 3 dc in next loop, dc in next dc.

Row 18: 3 Dc in next loop, ch 2, skip next sc, 3 dc in next loop, dc in next dc.

Row 19: Work Block.

CENTER SPIDER WEBS

Row 55: Work Block, work 17 Spaces, work Block.

Row 56: † Work Block, ch 29, skip next 2 dc, dc in next dc, work Block †, work 15 Spaces, repeat from † to † once.

Row 57: † Work Block, ch 14, sc in next loop, ch 14, skip next 3 dc, dc in next dc, work Block †, work 13 Spaces, repeat from † to † once.

Row 58: † Work Block, ch 12, sc in next loop and in next sc, sc in next loop, ch 12, skip next 3 dc, dc in next dc, work Block †, work 11 Spaces, repeat from † to † once.

Row 59: † Work Block, ch 12, sc in next loop and in next 3 sc, sc in next loop, ch 12, skip next 3 dc, dc in next dc, work Block †, work 9 Spaces, repeat from † to † once.

Row 60: † Work Block, ch 10, sc in next loop and in next 5 sc, sc in next loop, ch 10, skip next 3 dc, dc in next dc, work Block †, work 7 Spaces, repeat from † to † once.

Row 61: † Work Block, ch 10, sc in next loop and in next 7 sc, sc in next loop, ch 10, skip next 3 dc, dc in next dc, work Block †, work 5 Spaces, repeat from † to † once.

Row 62: † Work Block, ch 12, sc in next loop and in next 9 sc, sc in next loop, ch 12, skip next 3 dc, dc in next dc, work Block †, work 3 Spaces, repeat from † to † once.

Row 63: † Work Block, ch 12, sc in next loop and in next 11 sc, sc in next loop, ch 12, skip next 3 dc, dc in next dc, work Block †, work Space, repeat from † to † once.

Row 64: Work Block, ★ ch 14, sc in next loop and in next 13 sc, sc in next loop, ch 14, skip next 3 dc, dc in next dc, work Block; repeat from ★ once **more**.

Row 65: Work Block, ch 29, skip next 2 dc, dc in next dc, † 3 dc in next loop, ch 12, skip next sc, sc in next 13 sc, ch 12, 3 dc in next loop, dc in next dc †, work Space, repeat from † to † once, ch 29, skip next 2 dc, dc in next dc, work Block.

Row 66: Work Block, ♥ ch 14, sc in next loop, ch 14, skip next 3 dc, dc in next dc ♥, † 3 dc in next loop, ch 12, skip next sc, sc in next 11 sc, ch 12, 3 dc in next loop, dc in next dc †, work 3 Spaces, repeat from † to † once, then repeat from ♥ to ♥ once, work Block.

Row 67: Work Block, ♥ ch 12, sc in next loop and in next sc, sc in next loop, ch 12, skip next 3 dc, dc in next dc ♥, † 3 dc in next loop, ch 10, skip next sc, sc in next 9 sc, ch 10, 3 dc in next loop, dc in next dc †, work 5 Spaces, repeat from † to † once, then repeat from ♥ to ♥ once, work Block.

Row 68: Work Block, ♥ ch 12, sc in next loop and in next 3 sc, sc in next loop, ch 12, skip next 3 dc, dc in next dc ♥, † 3 dc in next loop, ch 10, skip next sc, sc in next 7 sc, ch 10, 3 dc in next loop, dc in next dc †, work 7 Spaces, repeat from † to † once, then repeat from ♥ to ♥ once, work Block.

Row 69: Work Block, ♥ ch 10, sc in next loop and in next 5 sc, sc in next loop, ch 10, skip next 3 dc, dc in next dc ♥, † 3 dc in next loop, ch 12, skip next sc, sc in next 5 sc, ch 12, 3 dc in next loop, dc in next dc †, work 9 Spaces, repeat from † to † once, then repeat from ♥ to ♥ once, work Block.

Row 70: Work Block, ♥ ch 10, sc in next loop and in next 7 sc, sc in next loop, ch 10, skip next 3 dc, dc in next dc ♥, † 3 dc in next loop, ch 12, skip next sc, sc in next 3 sc, ch 12, 3 dc in next loop, dc in next dc †, work 11 Spaces, repeat from † to † once, then repeat from ♥ to ♥ once, work Block.

Row 71: Work Block, ♥ ch 12, sc in next loop and in next 9 sc, sc in next loop, ch 12, skip next 3 dc, dc in next dc ♥, † 3 dc in next loop, ch 14, skip next sc, sc in next sc, ch 14, 3 dc in next loop, dc in next dc †, work 13 Spaces, repeat from † to † once, then repeat from ♥ to ♥ once, work Block.

Row 72: Work Block, ♥ ch 12, sc in next loop and in next 11 sc, sc in next loop, ch 12, skip next 3 dc, dc in next dc ♥, † 3 dc in next loop, ch 2, skip next sc, 3 dc in next loop, dc in next dc †, work 15 Spaces, repeat from † to † once, then repeat from ♥ to ♥ once, work Block.

Row 73: † Work Block, ch 14, sc in next loop and in next 13 sc, sc in next loop, ch 14, skip next 3 dc, dc in next dc, work Block †, work 17 Spaces, repeat from † to † once.

Row 74: † Work Block, ch 29, skip next 2 dc, dc in next dc, 3 dc in next loop, ch 12, skip next sc, sc in next 13 sc, ch 12, 3 dc in next loop, dc in next dc, ch 29, skip next 2 dc, dc in next dc, work Block †, work 15 Spaces, repeat from † to † once.

Row 75: † Work Block, ♥ ch 14, sc in next loop, ch 14, skip next 3 dc, dc in next dc ♥, 3 dc in next loop, ch 12, skip next sc, sc in next 11 sc, ch 12, 3 dc in next loop, dc in next dc, repeat from ♥ to ♥ once, work Block †, work 13 Spaces, repeat from † to † once.

Row 76: † Work Block, ♥ ch 12, sc in next loop and in next sc, sc in next loop, ch 12, skip next 3 dc, dc in next dc ♥, 3 dc in next loop, ch 10, skip next sc, sc in next 9 sc, ch 10, 3 dc in next loop, dc in next dc, repeat from ♥ to ♥ once, work Block †, work 11 Spaces, repeat from † to † once.

Row 77: † Work Block, ♥ ch 12, sc in next loop and in next 3 sc, sc in next loop, ch 12, skip next 3 dc, dc in next dc ♥, 3 dc in next loop, ch 10, skip next sc, sc in next 7 sc, ch 10, 3 dc in next loop, dc in next dc, repeat from ♥ to ♥ once, work Block †, work 9 Spaces, repeat from † to † once.

Row 78: † Work Block, ♥ ch 10, sc in next loop and in next 5 sc, sc in next loop, ch 10, skip next 3 dc, dc in next dc ♥, 3 dc in next loop, ch 12, skip next sc, sc in next 5 sc, ch 12, 3 dc in next loop, dc in next dc, repeat from ♥ to ♥ once, work Block †, work 7 Spaces, repeat from † to † once.

Row 79: † Work Block, ♥ ch 10, sc in next loop and in next 7 sc, sc in next loop, ch 10, skip next 3 dc, dc in next dc ♥, 3 dc in next loop, ch 12, skip next sc, sc in next 3 sc, ch 12, 3 dc in next loop, dc in next dc, repeat from ♥ to ♥ once, work Block †, work 5 Spaces, repeat from † to † once.

Row 80: † Work Block, ♥ ch 12, sc in next loop and in next 9 sc, sc in next loop, ch 12, skip next 3 dc, dc in next dc ♥, 3 dc in next loop, ch 14, skip next sc, sc in next sc, ch 14, 3 dc in next loop, dc in next dc, repeat from ♥ to ♥ once, work Block †, work 3 Spaces, repeat from † to † once.

Row 81: † Work Block, ♥ ch 12, sc in next loop and in next 11 sc, sc in next loop, ch 12, skip next 3 dc, dc in next dc ♥, 3 dc in next loop, ch 2, skip next sc, 3 dc in next loop, dc in next dc, repeat from ♥ to ♥ once, work Block †, work Space, repeat from † to † once.

Row 82: Work Block, ★ ch 14, sc in next loop and in next 13 sc, sc in next loop, ch 14, skip next 3 dc, dc in next dc, work Block; repeat from ★ 3 times **more**.

Row 83: ★ † 3 Dc in next loop, ch 12, skip next sc, sc in next 13 sc, ch 12, 3 dc in next loop, dc in next dc †, work Space; repeat from ★ 2 times **more**, then repeat from † to † once.

Row 84: ★ † 3 Dc in next loop, ch 12, skip next sc, sc in next 11 sc, ch 12, 3 dc in next loop, dc in next dc †, work 3 Spaces; repeat from ★ 2 times **more**, then repeat from † to † once.

Row 85: ★ † 3 Dc in next loop, ch 10, skip next sc, sc in next 9 sc, ch 10, 3 dc in next loop, dc in next dc †, work 5 Spaces; repeat from ★ 2 times **more**, then repeat from † to † once.

Row 86: ★ † 3 Dc in next loop, ch 10, skip next sc, sc in next 7 sc, ch 10, 3 dc in next loop, dc in next dc †, work 7 Spaces; repeat from ★ 2 times **more**, then repeat from † to † once.

Row 87: ★ † 3 Dc in next loop, ch 12, skip next sc, sc in next 5 sc, ch 12, 3 dc in next loop, dc in next dc †, work 9 Spaces; repeat from ★ 2 times **more**, then repeat from † to † once.

Row 88: ★ † 3 Dc in next loop, ch 12, skip next sc, sc in next 3 sc, ch 12, 3 dc in next loop, dc in next dc †, work 11 Spaces; repeat from ★ 2 times **more**, then repeat from † to † once.

Row 89: ★ † 3 Dc in next loop, ch 14, skip next sc, sc in next sc, ch 14, 3 dc in next loop, dc in next dc †, work 13 Spaces; repeat from ★ 2 times **more**, then repeat from † to † once.

Row 90: ★ † 3 Dc in next loop, ch 2, skip next sc, 3 dc in next loop, dc in next dc †, work 15 Spaces; repeat from ★ 2 times **more**, then repeat from † to † once.

Row 91: Work Block, (work 17 Spaces, work Block) 3 times.

Row 92: ★ † Work Block, ch 29, skip next 2 dc, dc in next dc, work Block †, work 15 Spaces; repeat from ★ 2 times **more**, then repeat from † to † once.

Row 93: ★ † Work Block, ch 14, sc in next loop, ch 14, skip next 3 dc, dc in next dc, work Block †, work 13 Spaces; repeat from ★ 2 times **more**, then repeat from † to † once.

Row 94: ★ † Work Block, ch 12, sc in next loop and in next sc, sc in next loop, ch 12, skip next 3 dc, dc in next dc, work Block †, work 11 Spaces; repeat from ★ 2 times **more**, then repeat from † to † once.

Row 95: ★ † Work Block, ch 12, sc in next loop and in next 3 sc, sc in next loop, ch 12, skip next 3 dc, dc in next dc, work Block †, work 9 Spaces; repeat from ★ 2 times **more**, then repeat from † to † once.

Row 96: ★ † Work Block, ch 10, sc in next loop and in next 5 sc, sc in next loop, ch 10, skip next 3 dc, dc in next dc, work Block †, work 7 Spaces; repeat from ★ 2 times **more**, then repeat from † to † once.

Row 97: ★ † Work Block, ch 10, sc in next loop and in next 7 sc, sc in next loop, ch 10, skip next 3 dc, dc in next dc, work Block †, work 5 Spaces; repeat from ★ 2 times **more**, then repeat from † to † once.

Row 98: ★ † Work Block, ch 12, sc in next loop and in next 9 sc, sc in next loop, ch 12, skip next 3 dc, dc in next dc, work Block †, work 3 Spaces; repeat from ★ 2 times **more**, then repeat from † to † once.

Row 99: ★ † Work Block, ch 12, sc in next loop and in next 11 sc, sc in next loop, ch 12, skip next 3 dc, dc in next dc, work Block †, work Space; repeat from ★ 2 times **more**, then repeat from † to † once.

Row 100: Work Block, ★ ch 14, sc in next loop and in next 13 sc, sc in next loop, ch 14, skip next 3 dc, dc in next dc, work Block; repeat from ★ 3 times **more**.

Row 101: ♥ † 3 Dc in next loop, ch 12, skip next sc, sc in next 13 sc, ch 12, 3 dc in next loop, dc in next dc †, ch 29, skip next 2 dc, dc in next dc, repeat from † to † once ♥, work Space, repeat from ♥ to ♥ once.

Row 102: ♥ † 3 Dc in next loop, ch 12, skip next sc, sc in next 11 sc, ch 12, 3 dc in next loop, dc in next dc †, ch 14, sc in next loop, ch 14, skip next 3 dc, dc in next dc, repeat from † to † once ♥, work 3 Spaces, repeat from ♥ to ♥ once.

Row 103: ♥ † 3 Dc in next loop, ch 10, skip next sc, sc in next 9 sc, ch 10, 3 dc in next loop, dc in next dc †, ch 12, sc in next loop and in next sc, sc in next loop, ch 12, skip next 3 dc, dc in next dc, repeat from † to † once ♥, work 5 Spaces, repeat from ♥ to ♥ once.

Row 104: ♥ † 3 Dc in next loop, ch 10, skip next sc, sc in next 7 sc, ch 10, 3 dc in next loop, dc in next dc †, ch 12, sc in next loop and in next 3 sc, sc in next loop, ch 12, skip next 3 dc, dc in next dc, repeat from † to † once ♥, work 7 Spaces, repeat from ♥ to ♥ once.

Row 105: ♥ † 3 Dc in next loop, ch 12, skip next sc, sc in next 5 sc, ch 12, 3 dc in next loop, dc in next dc †, ch 10, sc in next loop and in next 5 sc, sc in next loop, ch 10, skip next 3 dc, dc in next dc, repeat from † to † once ♥, work 9 Spaces, repeat from ♥ to ♥ once.

Row 106: ♥ † 3 Dc in next loop, ch 12, skip next sc, sc in next 3 sc, ch 12, 3 dc in next loop, dc in next dc †, ch 10, sc in next loop and in next 7 sc, sc in next loop, ch 10, skip next 3 dc, dc in next dc, repeat from † to † once ♥, work 11 Spaces, repeat from ♥ to ♥ once.

Row 107: ♥ † 3 Dc in next loop, ch 14, skip next sc, sc in next sc, ch 14, 3 dc in next loop, dc in next dc †, ch 12, sc in next loop and in next 9 sc, sc in next loop, ch 12, skip next 3 dc, dc in next dc, repeat from † to † once ♥, work 13 Spaces, repeat from ♥ to ♥ once.

Row 108: ♥ † 3 Dc in next loop, ch 2, skip next sc, 3 dc in next loop, dc in next dc †, ch 12, sc in next loop and in next 11 sc, sc in next loop, ch 12, skip next 3 dc, dc in next dc, repeat from † to † once ♥, work 15 Spaces, repeat from ♥ to ♥ once.

Row 109: † Work Block, ch 14, sc in next loop and in next 13 sc, sc in next loop, ch 14, skip next 3 dc, dc in next dc, work Block †, work 17 Spaces, repeat from † to † once.

Row 110: † 3 Dc in next loop, ch 12, skip next sc, sc in next 13 sc, ch 12, 3 dc in next loop, dc in next dc †, ch 29, skip next 2 dc, dc in next dc, work Block, work 15 Spaces, work Block, ch 29, skip next 2 dc, dc in next dc, repeat from † to † once.

Row 111: † 3 Dc in next loop, ch 12, skip next sc, sc in next 11 sc, ch 12, 3 dc in next loop, dc in next dc †, ♥ ch 14, sc in next loop, ch 14, skip next 3 dc, dc in next dc ♥, work Block, work 13 Spaces, work Block, repeat from ♥ to ♥ once, then repeat from † to † once.

Row 112: † 3 Dc in next loop, ch 10, skip next sc, sc in next 9 sc, ch 10, 3 dc in next loop, dc in next dc †, ♥ ch 12, sc in next loop and in next sc, sc in next loop, ch 12, skip next 3 dc, dc in next dc ♥, work Block, work 11 Spaces, work Block, repeat from ♥ to ♥ once, then repeat from † to † once.

Row 113: † 3 Dc in next loop, ch 10, skip next sc, sc in next 7 sc, ch 10, 3 dc in next loop, dc in next dc †, ♥ ch 12, sc in next loop and in next 3 sc, sc in next loop, ch 12, skip next 3 dc, dc in next dc ♥, work Block, work 9 Spaces, work Block, repeat from ♥ to ♥ once, then repeat from † to † once.

Row 114: † 3 Dc in next loop, ch 12, skip next sc, sc in next 5 sc, ch 12, 3 dc in next loop, dc in next dc †, ♥ ch 10, sc in next loop and in next 5 sc, sc in next loop, ch 10, skip next 3 dc, dc in next dc ♥, work Block, work 7 Spaces, work Block, repeat from ♥ to ♥ once, then repeat from † to † once.

Row 115: † 3 Dc in next loop, ch 12, skip next sc, sc in next 3 sc, ch 12, 3 dc in next loop, dc in next dc †, ♥ ch 10, sc in next loop and in next 7 sc, sc in next loop, ch 10, skip next 3 dc, dc in next dc ♥, work Block, work 5 Spaces, work Block, repeat from ♥ to ♥ once, then repeat from † to † once.

Row 116: † 3 Dc in next loop, ch 14, skip next sc, sc in next sc, ch 14, 3 dc in next loop, dc in next dc †, ♥ ch 12, sc in next loop and in next 9 sc, sc in next loop, ch 12, skip next 3 dc, dc in next dc ♥, work Block, work 3 Spaces, work Block, repeat from ♥ to ♥ once, then repeat from † to † once.

Row 117: † 3 Dc in next loop, ch 2, skip next sc, 3 dc in next loop, dc in next dc †, ♥ ch 12, sc in next loop and in next 11 sc, sc in next loop, ch 12, skip next 3 dc, dc in next dc ♥, work Block, work Space, work Block, repeat from ♥ to ♥ once, then repeat from † to † once.

Row 118: Work Block, ★ ch 14, sc in next loop and in next 13 sc, sc in next loop, ch 14, skip next 3 dc, dc in next dc, work Block; repeat from ★ once **more**.

Row 119: † 3 Dc in next loop, ch 12, skip next sc, sc in next 13 sc, ch 12, 3 dc in next loop, dc in next dc †, work Space, repeat from † to † once.

Row 120: † 3 Dc in next loop, ch 12, skip next sc, sc in next 11 sc, ch 12, 3 dc in next loop, dc in next dc †, work 3 Spaces, repeat from † to † once.

Row 121: † 3 Dc in next loop, ch 10, skip next sc, sc in next 9 sc, ch 10, 3 dc in next loop, dc in next dc †, work 5 Spaces, repeat from † to † once.

Row 122: † 3 Dc in next loop, ch 10, skip next sc, sc in next 7 sc, ch 10, 3 dc in next loop, dc in next dc †, work 7 Spaces, repeat from † to † once.

Row 123: † 3 Dc in next loop, ch 12, skip next sc, sc in next 5 sc, ch 12, 3 dc in next loop, dc in next dc †, work 9 Spaces, repeat from † to † once.

Row 124: † 3 Dc in next loop, ch 12, skip next sc, sc in next 3 sc, ch 12, 3 dc in next loop, dc in next dc †, work 11 Spaces, repeat from † to † once.

Row 125: † 3 Dc in next loop, ch 14, skip next sc, sc in next sc, ch 14, 3 dc in next loop, dc in next dc †, work 13 Spaces, repeat from † to † once.

Row 126: † 3 Dc in next loop, ch 2, skip next sc, 3 dc in next loop, dc in next dc †, work 15 Spaces, repeat from † to † once.

Row 127: Work Block, work 17 Spaces, work Block.

EDGING

Turn; slip st in first ch-2 sp, ch 4, tr in same sp, 2 tr in next sp and in each sp around; join with slip st to top of beginning ch-4, finish off.

©2009 by Leisure Arts, Inc., 5701 Ranch Drive, Little Rock, AR 72223. All rights reserved. This digital publication is protected under federal copyright laws. Reproduction or distribution of this digital publication or any other Leisure Arts publication, including publications which are out of print, is prohibited unless specifically authorized. This includes, but is not limited to, any form of reproduction or distribution on or through the Internet, including posting, scanning, or e-mail transmission.

We have made every effort to ensure that these instructions are accurate and complete. We cannot, however, be responsible for human error, typographical mistakes, or variations in individual work.