

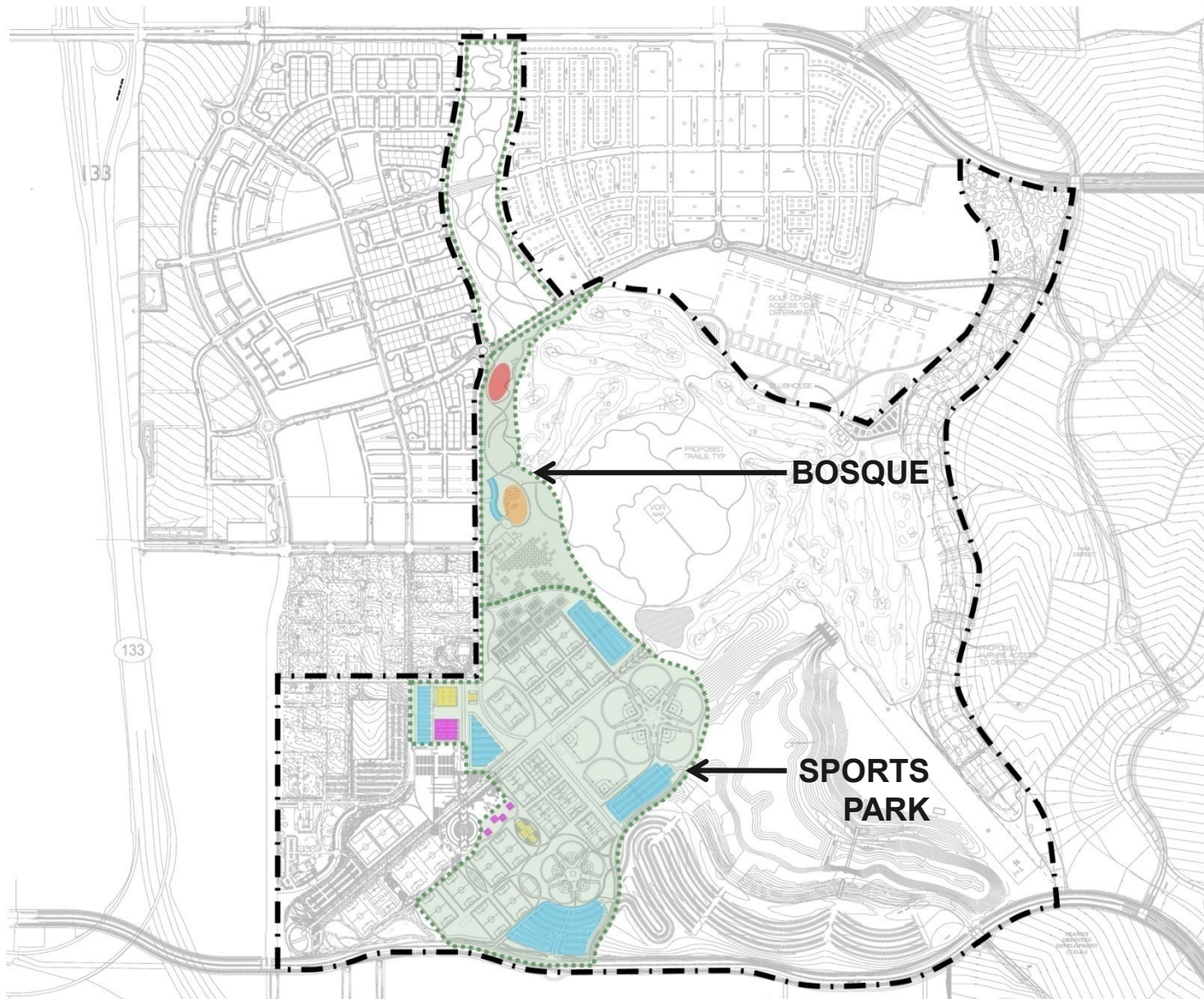


ORANGE COUNTY GREAT PARK

UNILATERAL AND OTHER PROGRAM CHANGES

MARCH 11, 2014

WRNSSTUDIO^{LLP}

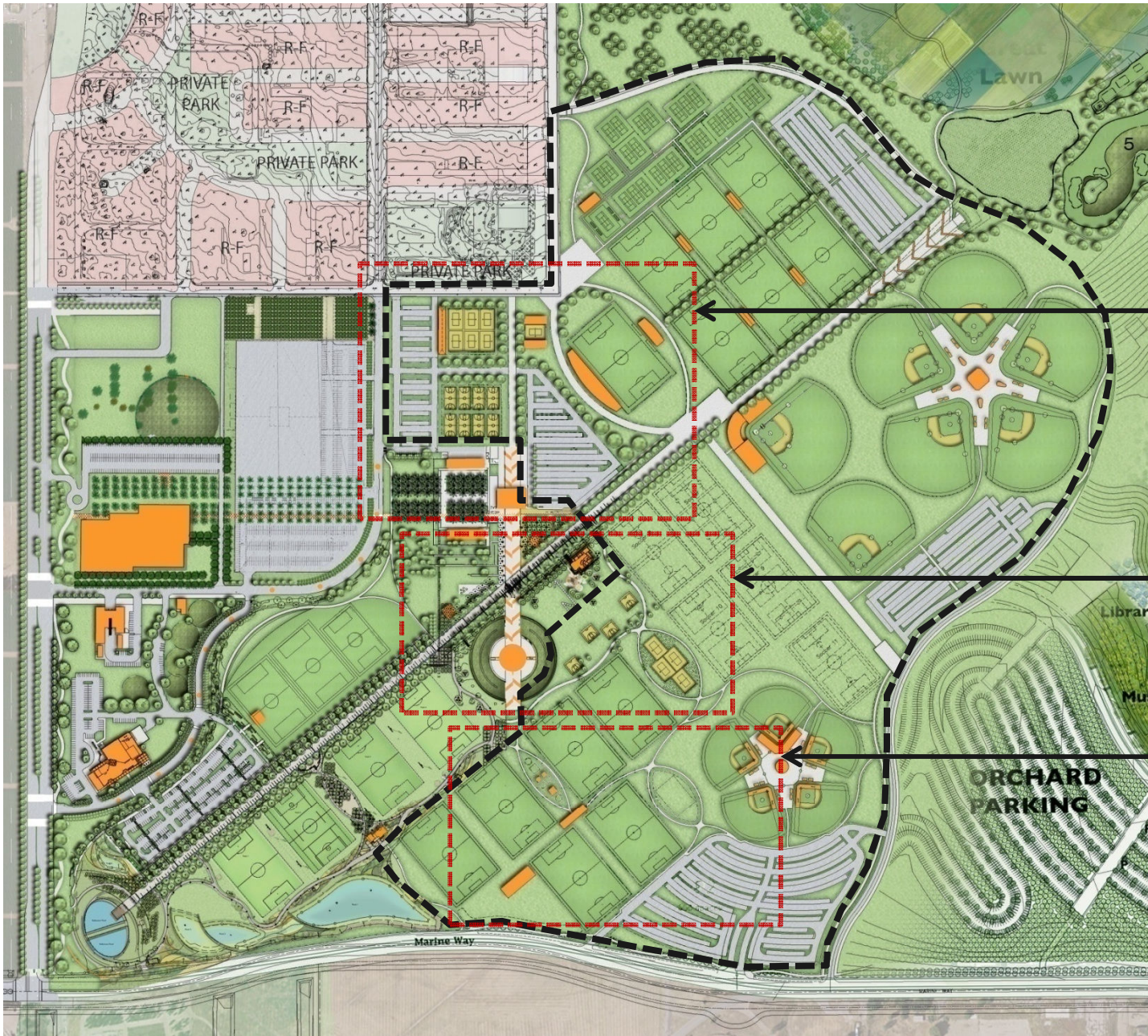


LEGEND

- DOG PARK
- NATURAL AMPHITHEATER
- SAND VOLLEYBALL COURTS
- SPORTS COURTS
- PARKING

BOSQUE

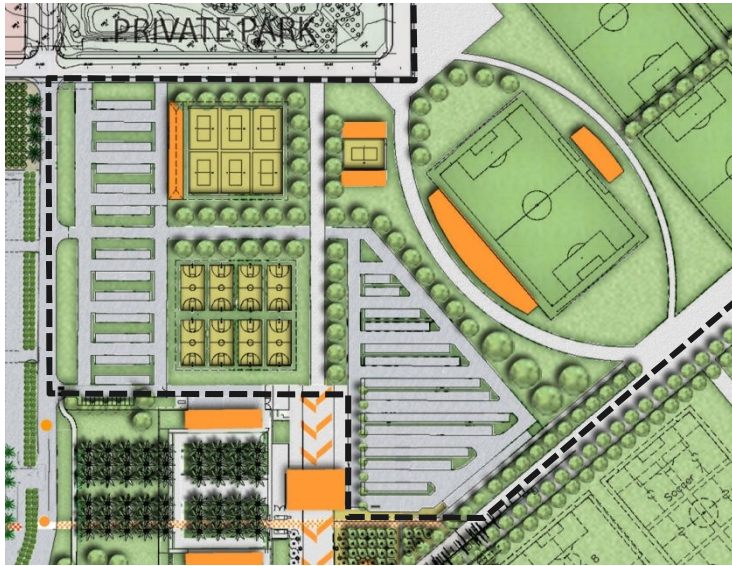
**SPORTS
PARK**



**CENTER FIELD /
PARKING AREA**

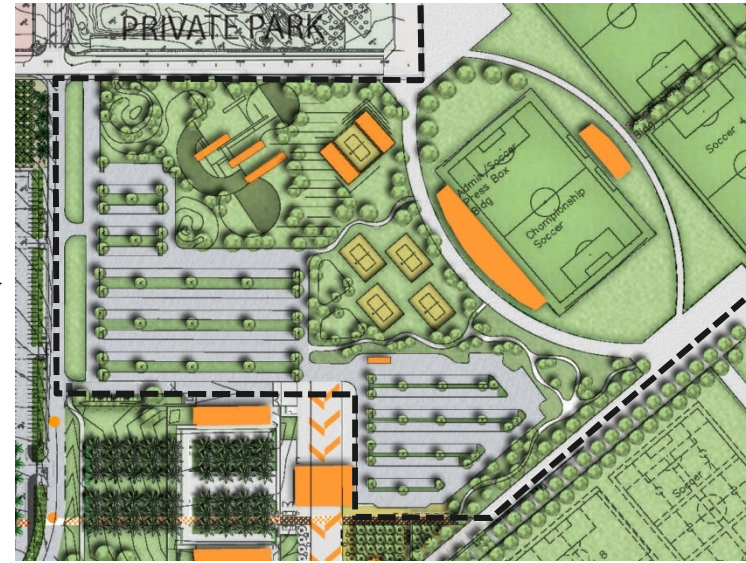
**BALLOON /
KIDS ROCK AREA**

**SOUTH LAWN
EXPANSION AREA**



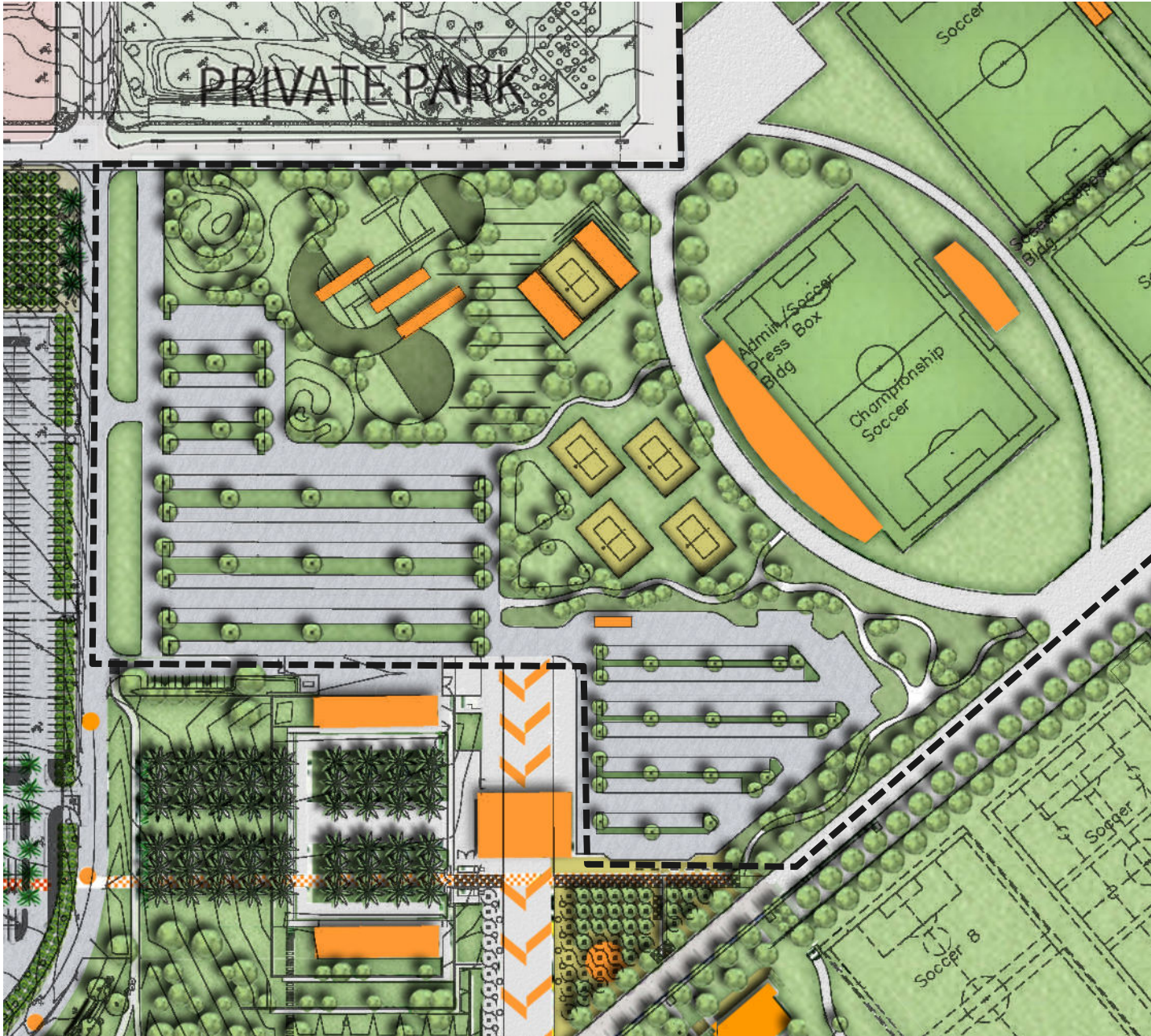
**CENTER FIELD AREA
IN HFET DESIGN PACKAGE**

- 7 Volleyball Courts
- 8 Sports Courts
- 1 Volleyball Support BLDG/Restrooms
- 326 Cars



**CENTER FIELD AREA REVISED
PROPOSED MODIFICATIONS**

- 5 Volleyball Courts
- 1 Children's Play Area
- 0 Volleyball Support BLDG/Restrooms
- 326 Cars



CENTER FIELD AREA

5 Volleyball Courts

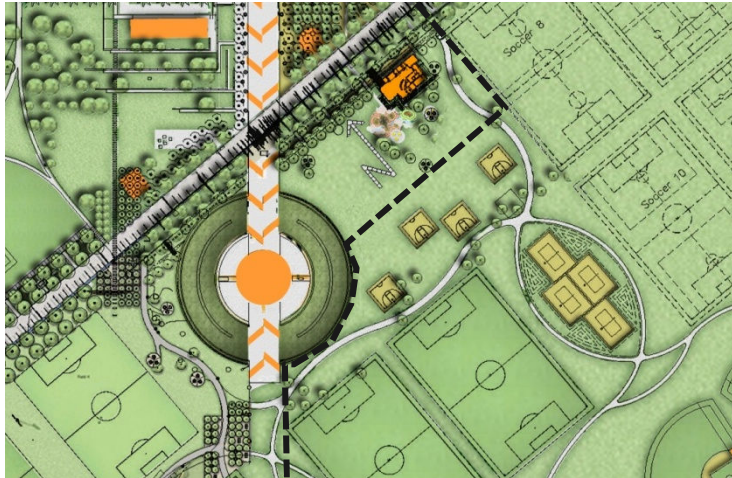
1 Children's Play Area

0 Volleyball Support
BLDG/Restrooms

Parking
326 Cars

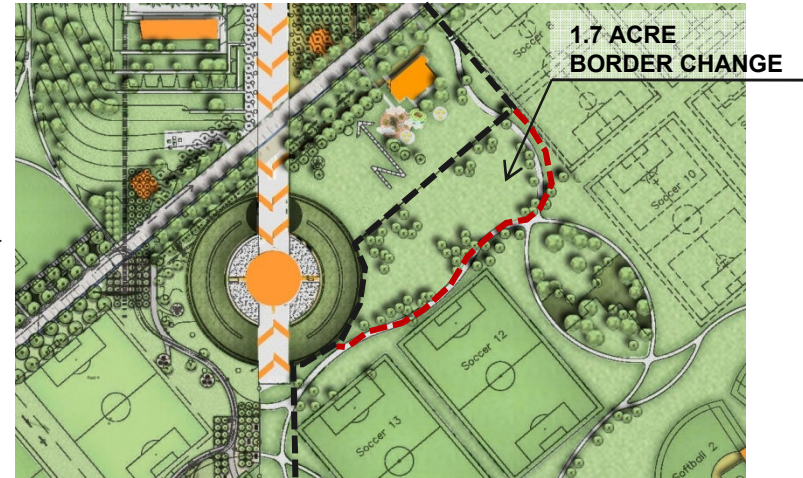


SPORTS PARK
Proposed Changes in the CENTER FIELD / BALLOON PARKING AREA



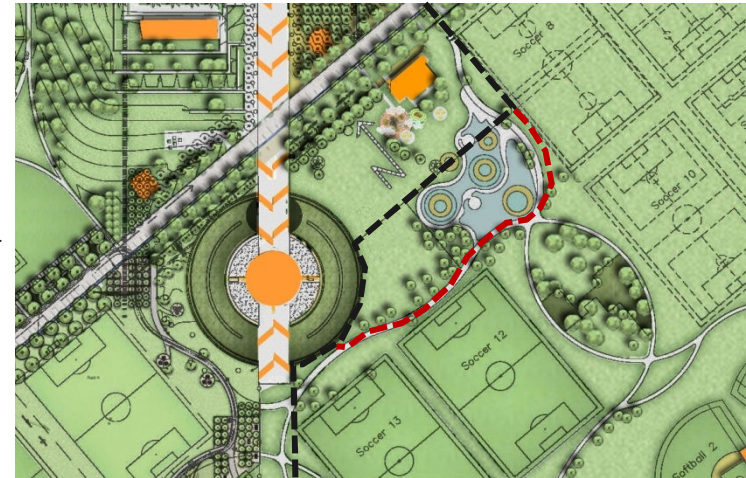
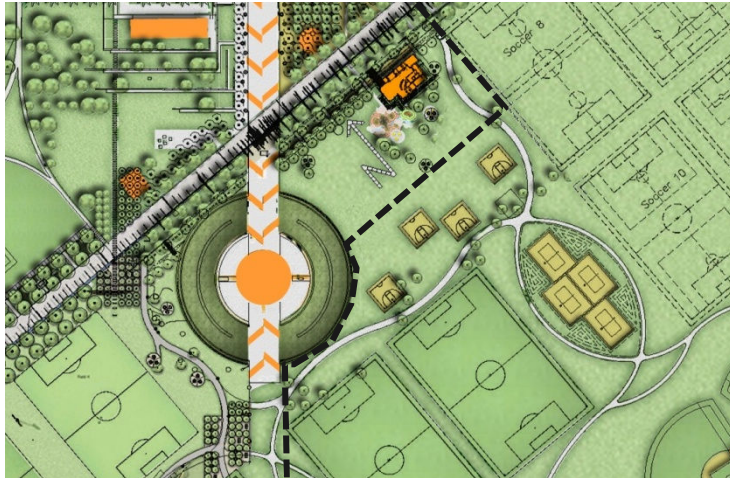
**VC / BALLOON / KIDS ROCK AREA
IN HFET DESIGN PACKAGE**

- 4 Volleyball Courts
- Limited Picnic/Lawn Area
- 4 Half Sports Courts



**VC / BALLOON / KIDS ROCK AREA
PROPOSED MODIFICATIONS**

- 0 Volleyball Courts
- Expanded Picnic/Lawn Area
- 0 Half Sports Courts

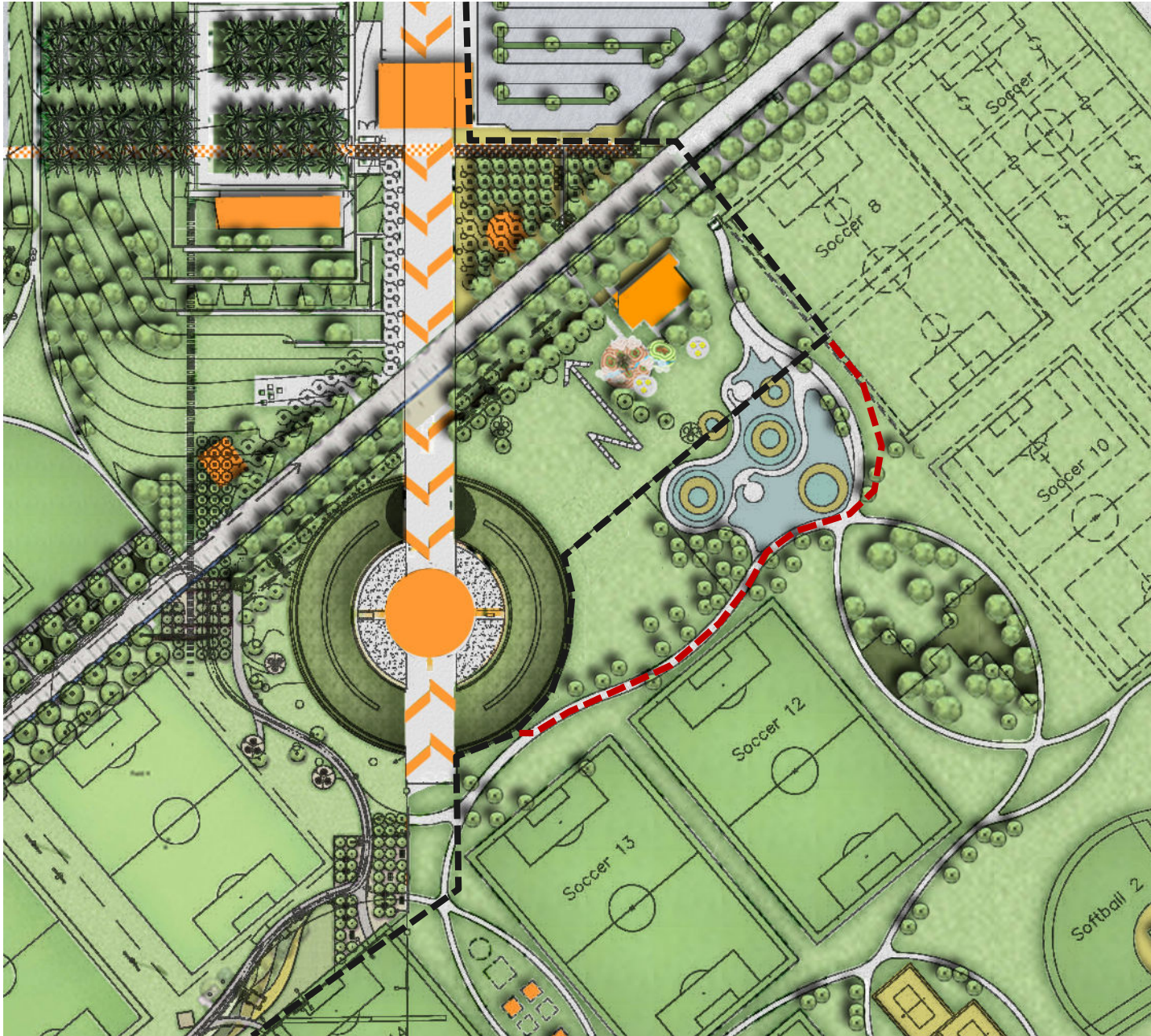


**VC / BALLOON / KIDS ROCK AREA
IN HFET DESIGN PACKAGE**

- 4 Volleyball Courts
- Limited Picnic/Lawn Area
- 4 Half Sports Courts

**VC / BALLOON / KIDS ROCK AREA
PROPOSED MODIFICATIONS**

- 0 Volleyball Courts
- Expanded Play/Splash Park
- 0 Half Sports Courts



**VC / BALLOON /
KIDS ROCK AREA**

0 Sand Volleyball

Expanded Play/
Splash Park

0 Half Sports Courts





**SOUTH LAWN EXPANSION AREA
IN HFET DESIGN PACKAGE**

0 Volleyball Courts
0 Sports Courts



**SOUTH LAWN EXPANSION AREA
PROPOSED MODIFICATIONS**

0 Volleyball Courts
4 Sports Courts



**SOUTH LAWN
EXPANSION AREA**

0 Volleyball Courts

4 Sports Courts

Recommendations

1. Sand Volleyball Courts

- *Recommendation:* That the OCGP Corporation Board recommend that the City Council reduce the total number of sand volleyball courts from 11 to five and approve use of the re-claimed land for additional children's play and passive picnicking areas.

2. Sports Courts

- *Recommendation:* That the OCGP Corporation Board recommend that the City Council reduce the total number of sports courts from 12 to four, and approve the use of the re-claimed land for additional children's play areas, passive picnicking areas and improved parking layout to accommodate increased family amenities within the Sports Park sub-area.



LEGEND

- DOG PARK
- NATURAL AMPHITHEATER
- PARKING
90 Spaces



DOG PARK AREA

**MINI-AMPHITHEATER
AREA**

TRABUCO ENTRY AREA

FARM + FOOD LAB



PROPOSED MODIFICATIONS



Woodland and Trails

Dog Park

Mini-Amphitheater

Children's Adventure

Gardens

Trabuco Entry

Farm + Food Lab



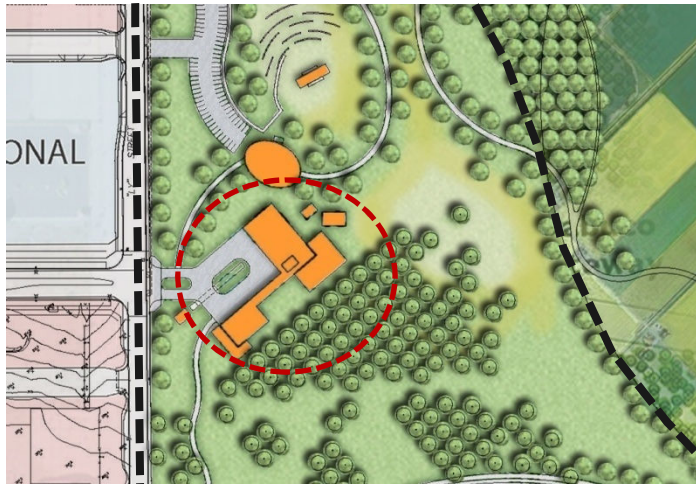


IN HFET DESIGN PACKAGE

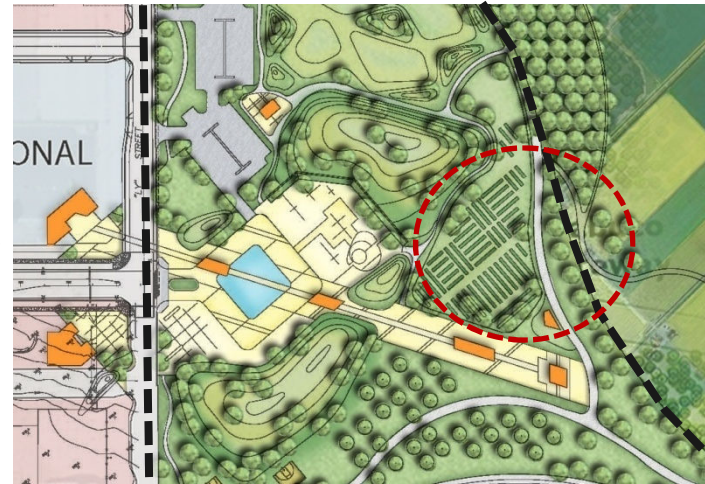
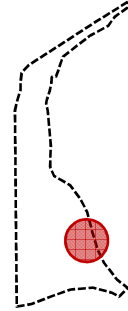
FARM + FOOD LAB



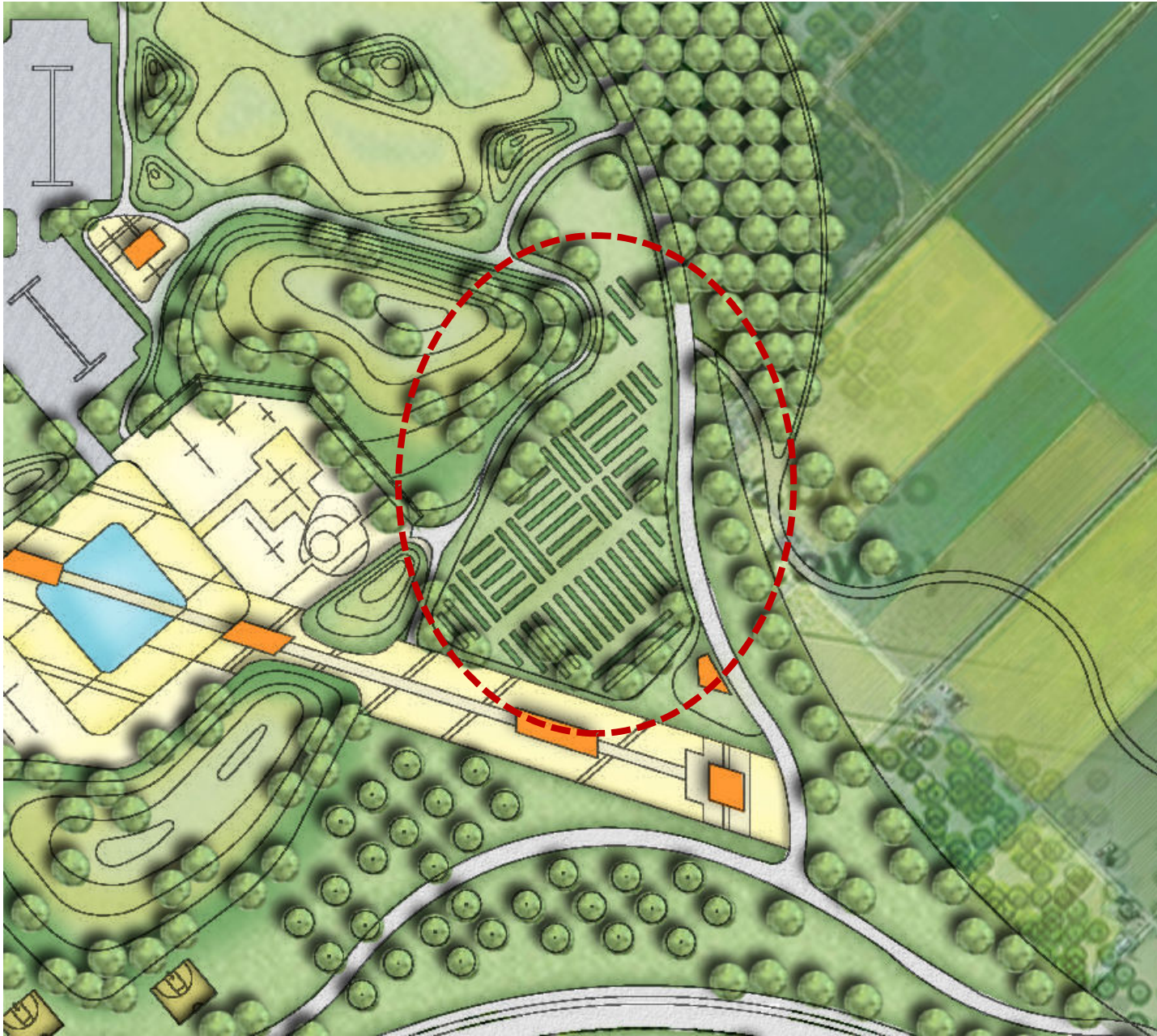
PROPOSED MODIFICATIONS



**FARM + FOOD LAB AREA
IN HFET DESIGN PACKAGE**



**FARM + FOOD LAB AREA
PROPOSED MODIFICATIONS**



FARM + FOOD LAB AREA

Recommendations

3. Farm + Food Lab

- *Recommendation:* That the OCGP Corporation Board recommend to the City Council the relocation of the Great Park Farm + Food Lab from its existing location to a new approximate 3.7-acre location near the Trabuco entry.
- *Recommendation:* That the OCGP Corporation Board recommend that the City Council reserve funds, in an amount to be determined, to design and construct the Great Park Farm + Food Lab at its permanent location near the Trabuco entry.

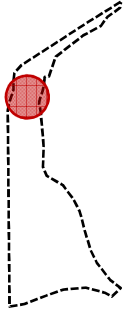


IN HFET DESIGN PACKAGE

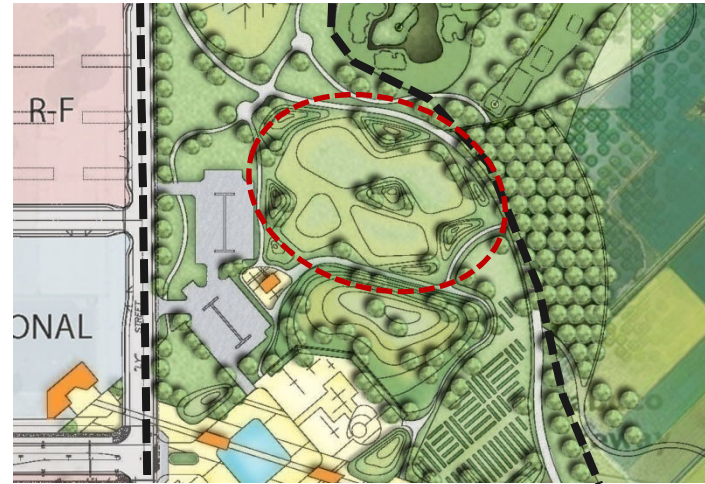
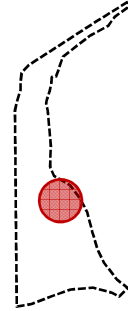
DOG PARK AREA



PROPOSED MODIFICATIONS



**DOG PARK AREA
IN HFET DESIGN PACKAGE**



**DOG PARK AREA
PROPOSED MODIFICATIONS**



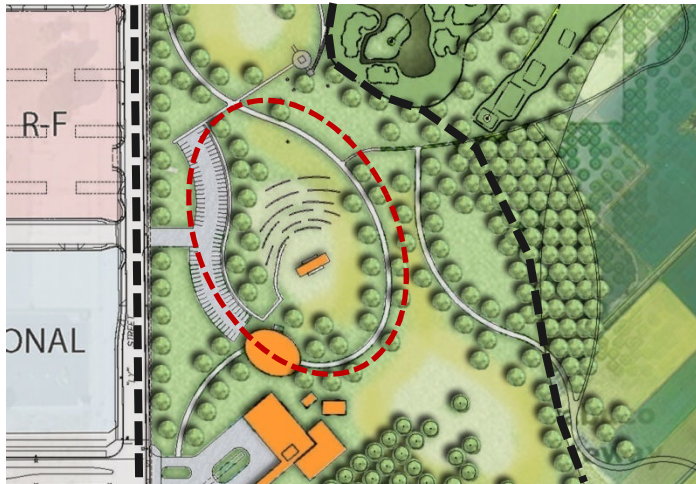
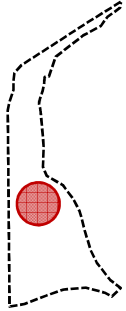
DOG PARK AREA



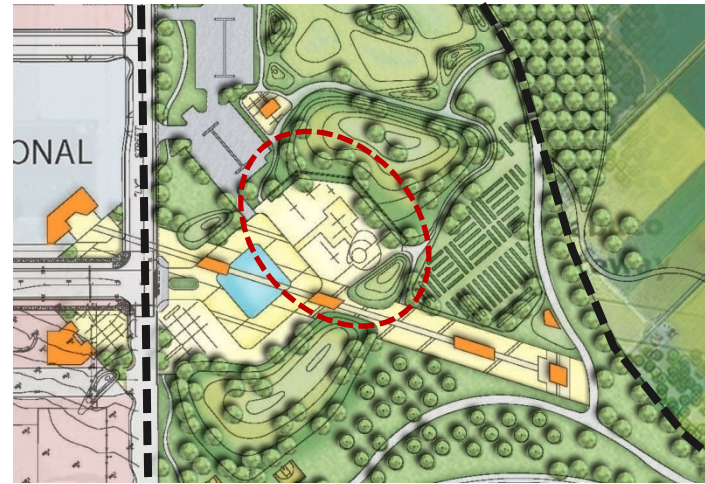
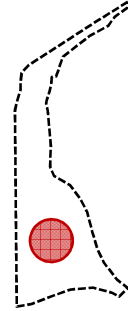
**MINI-AMPHITHEATER
AREA**



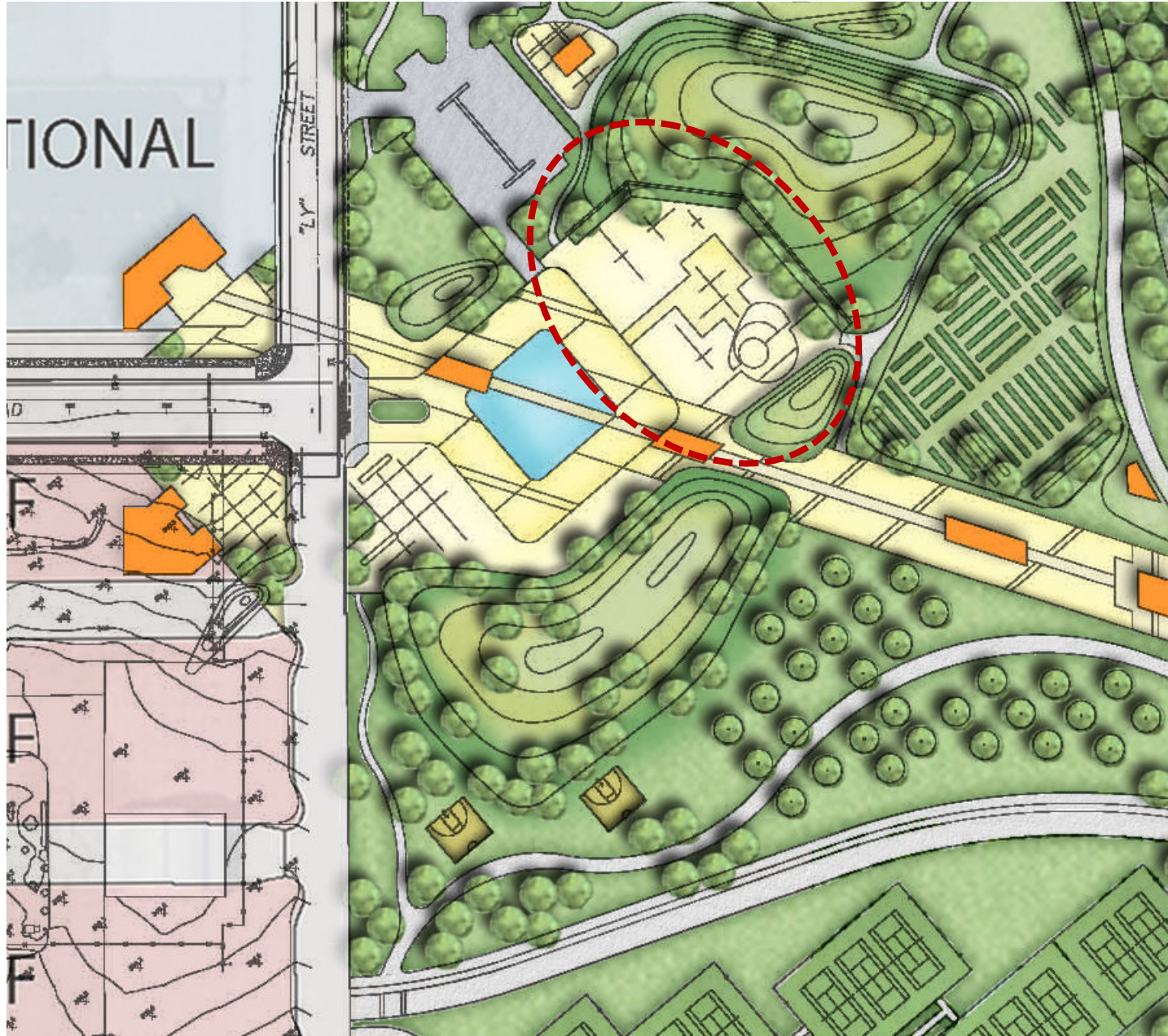
**BOSQUE
MINI-AMPHITHEATER AREA**



**MINI-AMPHITHEATER AREA
IN HFET DESIGN PACKAGE**



**MINI-AMPHITHEATER AREA
PROPOSED MODIFICATIONS**



**MINI-AMPHITHEATER
AREA**

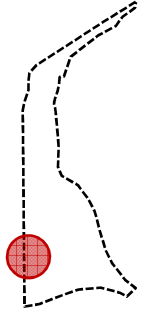


IN HFET DESIGN PACKAGE

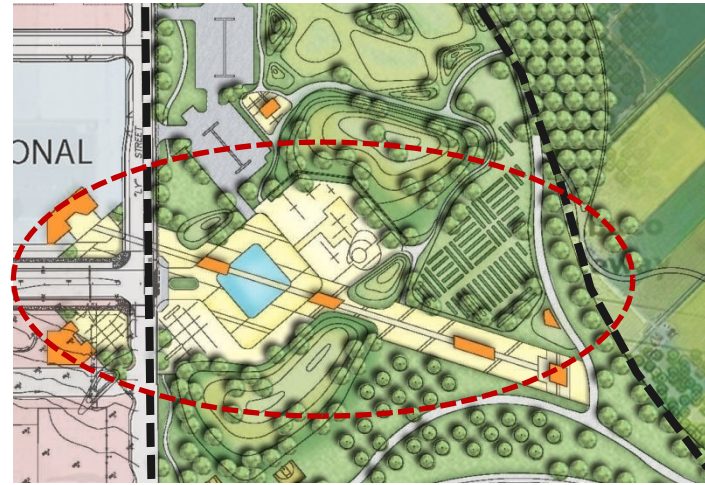
**TRABUCO ENTRY
AREA**



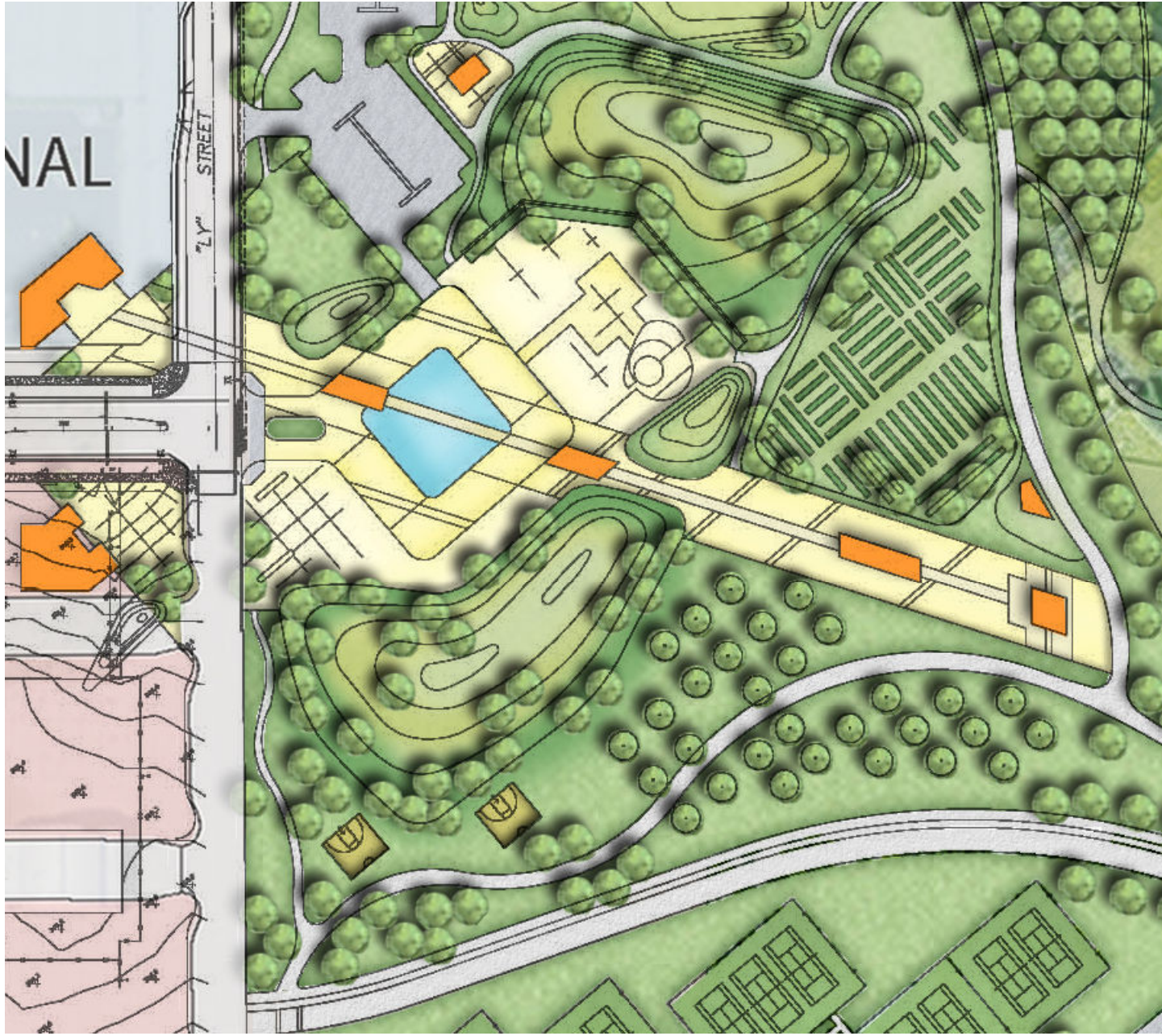
PROPOSED MODIFICATIONS



**TRABUCO ENTRY AREA
IN HFET DESIGN PACKAGE**



**TRABUCO ENTRY AREA
PROPOSED MODIFICATIONS**



**TRABUCO ENTRY
AREA**

Recommendations

4. Dog Park

- *Recommendation:* That the OCGP Corporation Board recommend that the City Council approve the design and location of the dog park in the Bosque sub-area, as indicated in the modified Design Package.

5. Mini-Amphitheater

- *Recommendation:* That the OCGP Corporation Board recommend that the City Council approve the design and location of the mini-amphitheater in the Bosque sub-area, as indicated in the modified Design Package.

6. Trabuco Entry

- *Recommendation:* That the OCGP Corporation Board recommend that the City Council approve a conceptual plan that would contemplate the potential appropriation of funds from the Additional Allowance or other identified source, for the purpose of funding an iconic water feature at the terminus of Trabuco and the entrance to the Great Park; a military memorial as integral to the experience of the Trabuco entry; and other public projects of significance designed to complement FivePoint Communities' "baseline" design in the Design Package.



GOLF COURSE



**GOLF COURSE
CLUB HOUSE**

RESTROOM BUILDING







LEGEND

- PARKING
- a. 242 spaces
- b. 84 spaces
- c. 440 spaces
- d. 435 spaces
- e. 800 spaces

Total: 2001 spaces

Recommendations

7. Golf Course Club House

- *Recommendation:* That the OCGP Corporation Board recommend that the City Council consider an alternate location(s) for the Golf Course Club House, as depicted in the Design Package.

8. Design Standards for Public Restrooms

- *Recommendation:* That the OCGP Corporation Board recommend that the City Council approve a design and construction budget (to be derived from the ALA II's Additional Allowance Fund), to cover any difference between the quality of restrooms that Heritage Fields is required to build under the ALA II, and the quality that is reflected in the public restrooms constructed in the Great Park's Western Sector Park Development Plan, including the Palm Court Arts Complex and the South Lawn Project.

9. Solar Parking Facilities

- *Recommendation:* That the OCGP Corporation Board recommend that the City Council approve a design and construction budget (to be derived from the ALA II's Additional Allowance Fund) to construct utilities infrastructure to certain parking facilities in the Design Package deemed feasible for the construction and operation of solar facilities. Such funds would be allocated from available funds in the Additional Allowance.