

2014 PHOTOGRAPHY
RUSTIQUE SET #2

KRAFTMAID CABINETRY

PUTNAM QUARTERSAWN OAK
DOORSTYLE
DRPD DRAWER FRONT OPTION
DISTRESSED GINGER WITH SABLE
GLAZE FINISH
*AVERY MAPLE DOORSTYLE
DOVE WHITE FINISH

HARDWARE:
25-#7086.AB 6" ANCIENT BRONZE
BAR PULL FOR DOORS
9-#7086.AB 6" ANCIENT BRONZE
BAR PULL FOR DRAWERS
2-#7085.AB 4" ANCIENT BRONZE
BAR PULL FOR WR3615BUTT

TOP MOLDING:
3-ACM8

TOE KICK MOLDING:
3-WMTK8
2-CVBB8

MISCELLANEOUS:
2-SM8
1-TUK
*2-SM8
*1-TUK
**6-TFOL3.96.FH

© 2013
MASCO Cabinetry, LLC
All Rights Reserved

KraftMaid

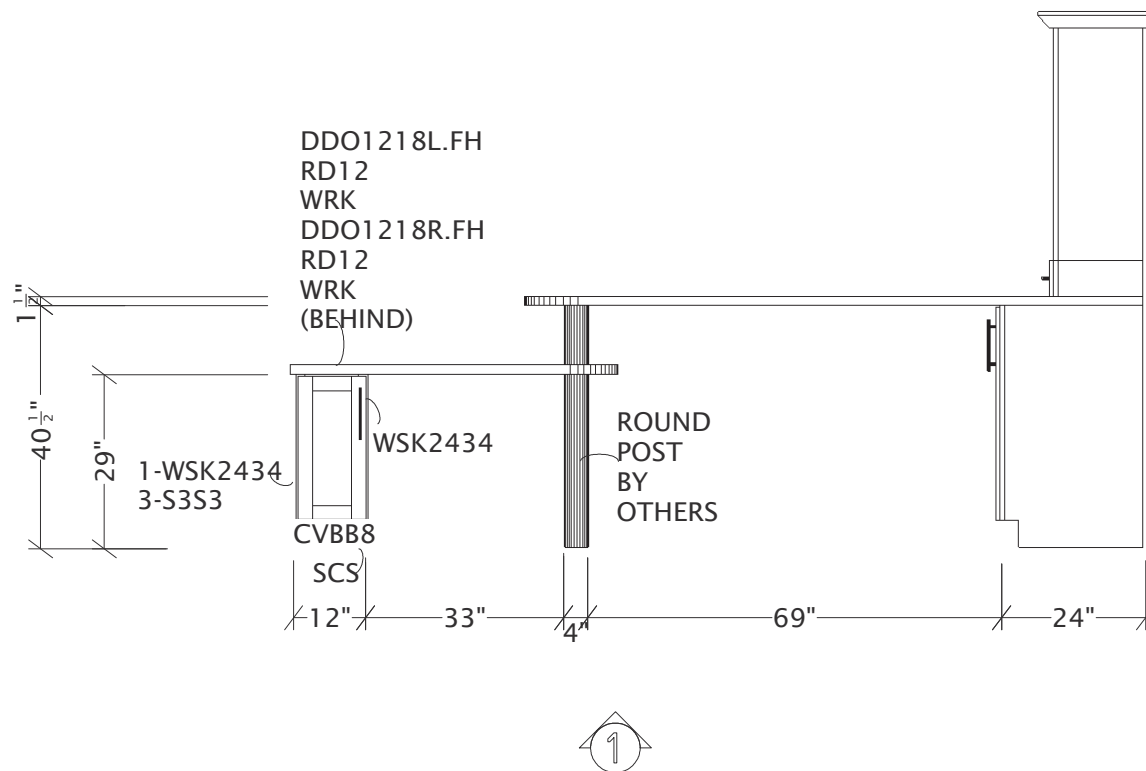
Designed: 6/27/2013
Printed: 6/27/2013

PAGE 1 OF 8

2014_RUSTIQUE_2_FI FLOOR PLAN

Drawing #: 1

Scale : 0 3/8" = 1'



INSTALLATION NOTES:

SCS: INSTALL BENEATH DDO1218L.FH AND DDO1218R.FH CABINETS, ACCORDING TO MANUFACTURER'S INSTRUCTIONS.

DDO1218L.FH AND DDO1218R.FH: INSTALL BACK TO BACK WHERE NOTED. THESE CABINETS AND COUNTERTOP WILL ROTATE FREELY AROUND POST.

2-WSK2434: TRIM EACH TO FIT AND INSTALL WHERE NOTED TO CONCEAL SEAM BETWEEN CABINETS.

3-S3S3: CUT TO MAKE FRAME AROUND THE EDGE OF THE WSK2434 (INSTEAD OF USING DOOR).

© 2013
MASCO Cabinetry, LLC
All Rights Reserved

KraftMaid

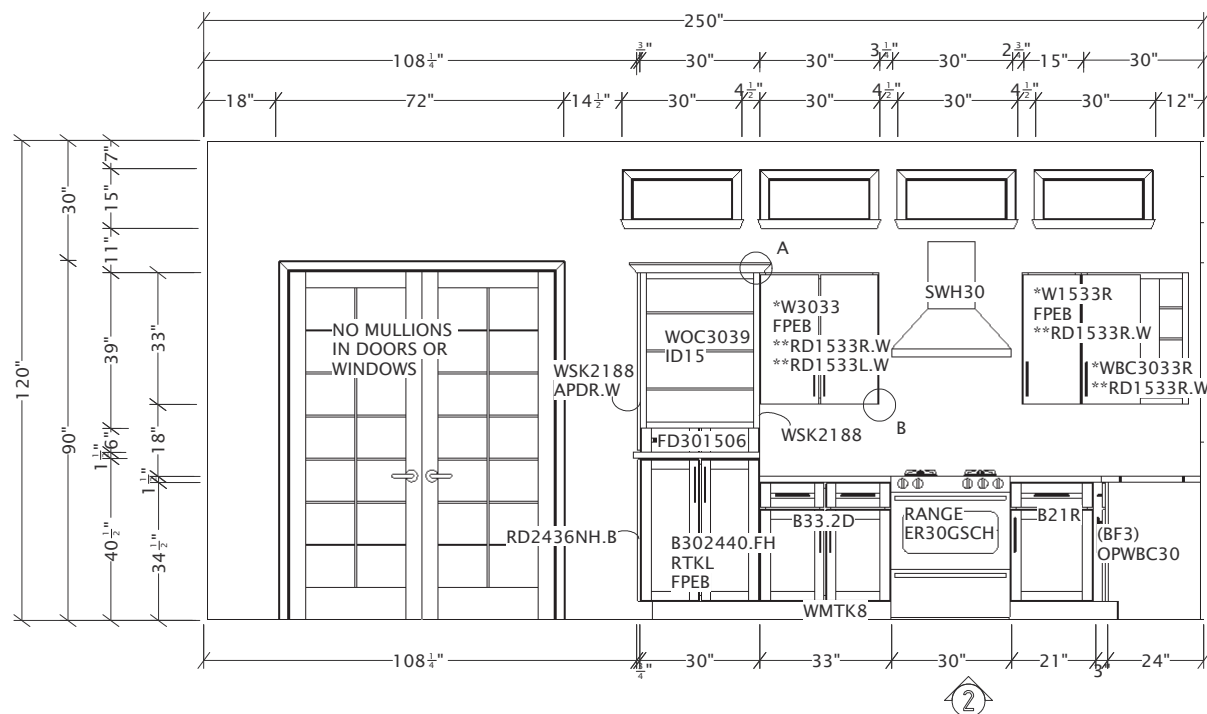
Designed: 6/27/2013
Printed: 6/27/2013

PAGE 2 OF 8

2014_RUSTIQUE_2_FI EI 3

Drawing #: 1

Scale : 0 3/8" = 1'



INSTALLATION NOTES:

*DENOTES DOVE WHITE FINISH

*WBC3033R: SET AT 30" FROM RIGHT WALL.

2-WSK2188: CUT EACH TO FIT AND INSTALL WHERE NOTED TO CONCEAL SEAM BETWEEN CABINETS.

APDR.W: INSTALL WHERE NOTED FROM INSIDE CABINET.

BF3 AND OPWBC30: INSTALL BF3 WHERE NOTED, EVEN WITH FACE FRAME OF B21R. CUT OPWBC30 INTO TWO PIECES, MITERING TOGETHER TO FORM 90 DEGREE CORNER. ATTACH TO BF3 FROM BEHIND.

RD2436NH.B: ALIGN WITH DOORS ON B302440.FH AND SECURE WHERE NOTED FROM INSIDE CABINET.

© 2013
MASCO Cabinetry, LLC
All Rights Reserved

KraftMaid

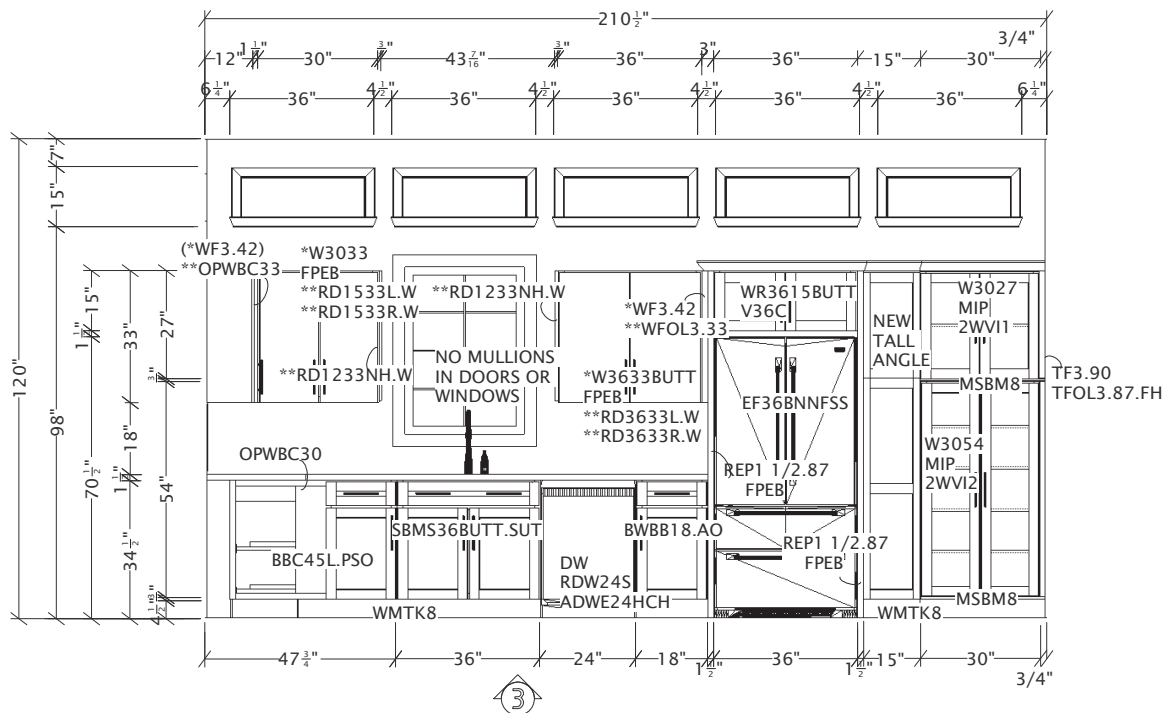
Designed: 6/27/2013
Printed: 6/27/2013

PAGE 3 OF 8

2014_RUSTIQUE_2_FI | El 4

Drawing #: 1

Scale : 0 1/4" = 1'



INSTALLATION NOTES:

*DENOTES DOVE WHITE FINISH

*WF3.42 AND **OPWBC33: CUT *WF3.42 TO FIT AND INSTALL WHERE NOTED, EVEN WITH FACE FRAME OF *W3033. CUT **OPWBC33 INTO TWO PIECES, MITERING TOGETHER TO FORM A 90 DEGREE ANGLE. ATTACH **OPWBC30 TO *WF3.42 FROM BEHIND.

**2-RD1233NH.W: ALIGN WITH DOORS ON *W3033 AND *W3633BUTT AND SECURE WHERE NOTED FROM INSIDE EACH CABINET.

*WF3.42 AND **WFOL3.33: CUT *WF3.42 TO FIT SPACE. CUT **WFOL3.33 3/16" LESS THAN *WF3.42. ALIGN **WFOL3.33 WITH DOORS ON *W3633BUTT AND ATTACH TO *WF3.42 FROM BEHIND WITH CUT EDGES FACING RIGHT. INSTALL SO THAT *WF3.42 IS EVEN WITH FACE FRAME OF *W3633BUTT.

MSBM8: CUT INTO TWO PIECES. ONE PIECE WILL FIT BENEATH W3027. THE OTHER PIECE WILL FIT BENEATH W3054. INSTALL EACH SO THAT FACE OF MSBM8 IS EVEN WITH FACE OF CABINET DOORS.

W3054: BUILD TOE BASE OUT OF FRAMING LUMBER. CONCEAL WITH WMTK8.

TF3.90 AND TFOL3.87.FH: CUT TF3.90 TO FIT SPACE. CUT TFOL3.87.FH 3/16" LESS THAN TF3.90. ALIGN TFOL3.87.FH WITH DOORS ON W3054 AND W3027 AND ATTACH TO TF3.90 FROM BEHIND WITH CUT EDGES FACING RIGHT. INSTALL SO THAT TF3.90 IS EVEN WITH FACE FRAME OF W3027 AND W3054.

BBC45L.PSO: INSTALL AT 47 3/4" FROM LEFT WALL.

© 2013
MASCO Cabinetry, LLC
All Rights Reserved

KraftMaid

Designed: 6/27/2013
Printed: 6/27/2013

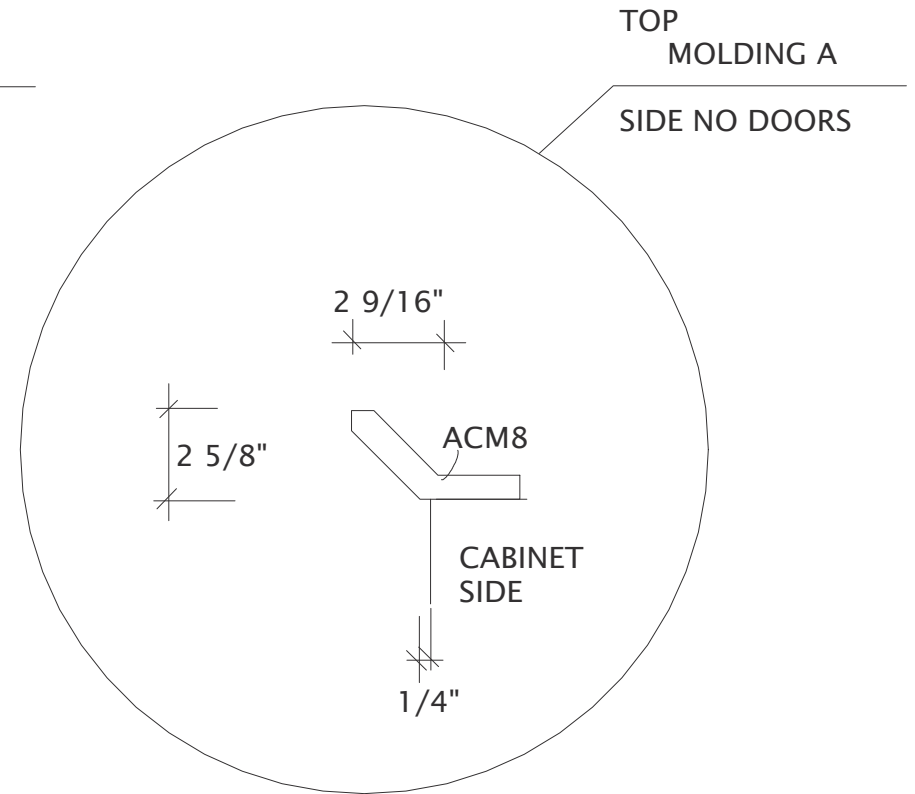
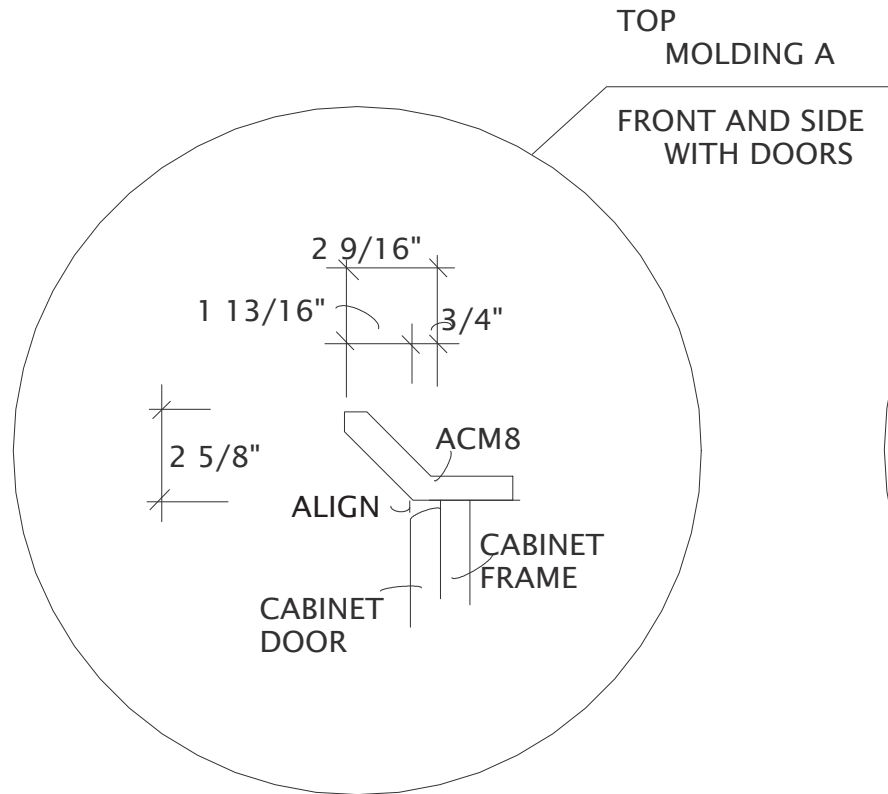
PAGE 4 OF 8

2014_RUSTIQUE_2_FI | El 5

Drawing #: 1

Scale : 0 1/4" = 1'

ON OAK CABINETS ONLY



ON OAK CABINETS ONLY

MOLDING DETAILS

© 2013
MASCO Cabinetry, LLC
All Rights Reserved

KraftMaid

Designed: 6/27/2013
Printed: 6/27/2013

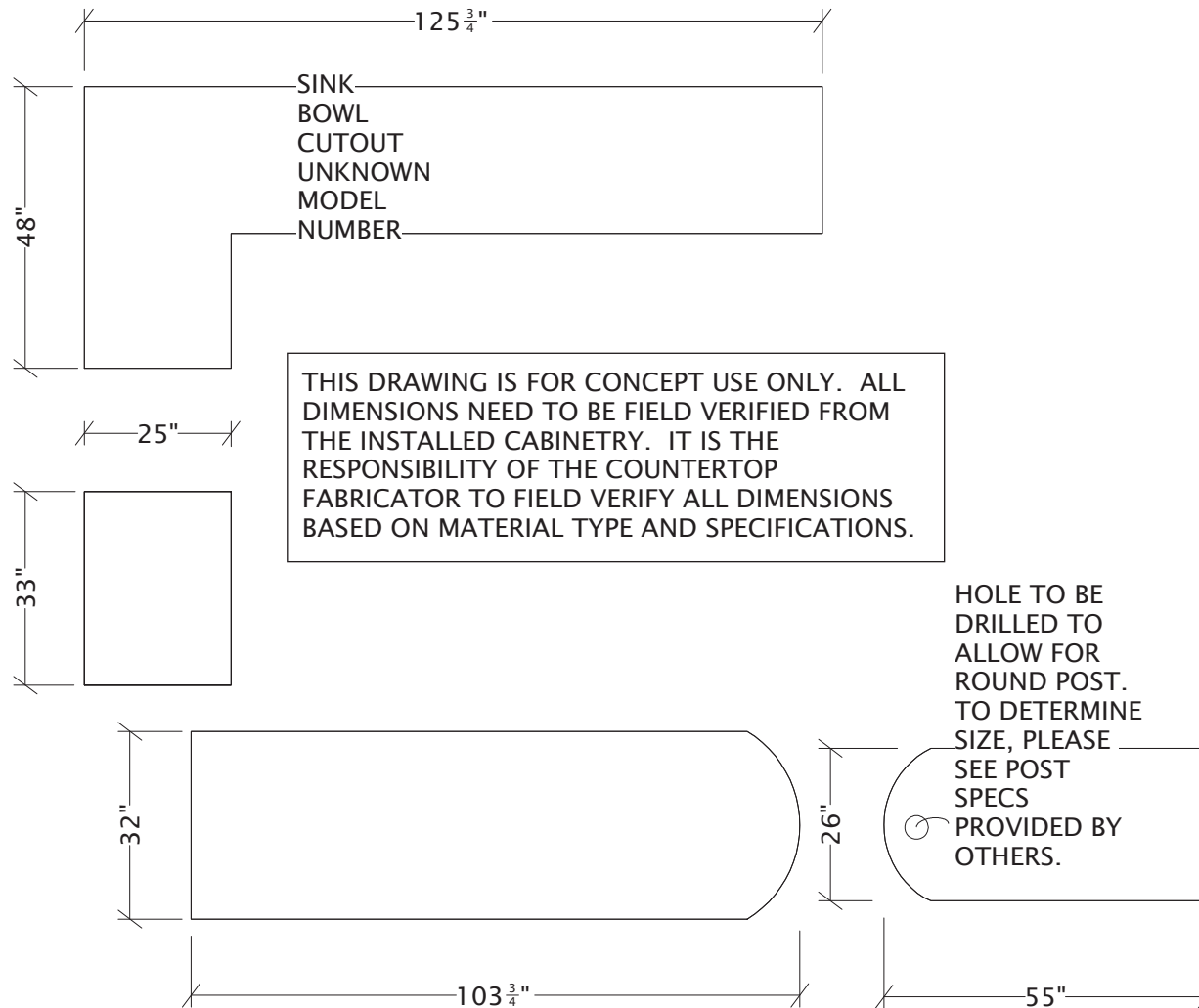
PAGE 5 OF 8

MOLDING_ACM8

MOLDING

Drawing #: 1

Scale : 0 1/2" = 1'



COUNTERTOP DETAILS

© 2013
MASCO Cabinetry, LLC
All Rights Reserved

KraftMaid

Designed: 6/6/2013
Printed: 6/27/2013

PAGE 6 OF 8

2014 RUSTIQUE 2 5

COUNTERTOPS

Drawing #: 1

Scale : 0 $\frac{3}{8}$ " = 1'



© 2013
 MASCO Cabinetry, LLC
 All Rights Reserved

KraftMaid

Designed: 6/27/2013
 Printed: 6/27/2013

PAGE 7 OF 8

2014_RUSTIQUE_2_FINAL01

FLOOR PLAN

Drawing #: 1



© 2013
 MASCO Cabinetry, LLC
 All Rights Reserved

KraftMaid

Designed: 6/27/2013
 Printed: 6/27/2013

PAGE 8 OF 8

2014_RUSTIQUE_2_FINAL01

FLOOR PLAN

Drawing #: 1