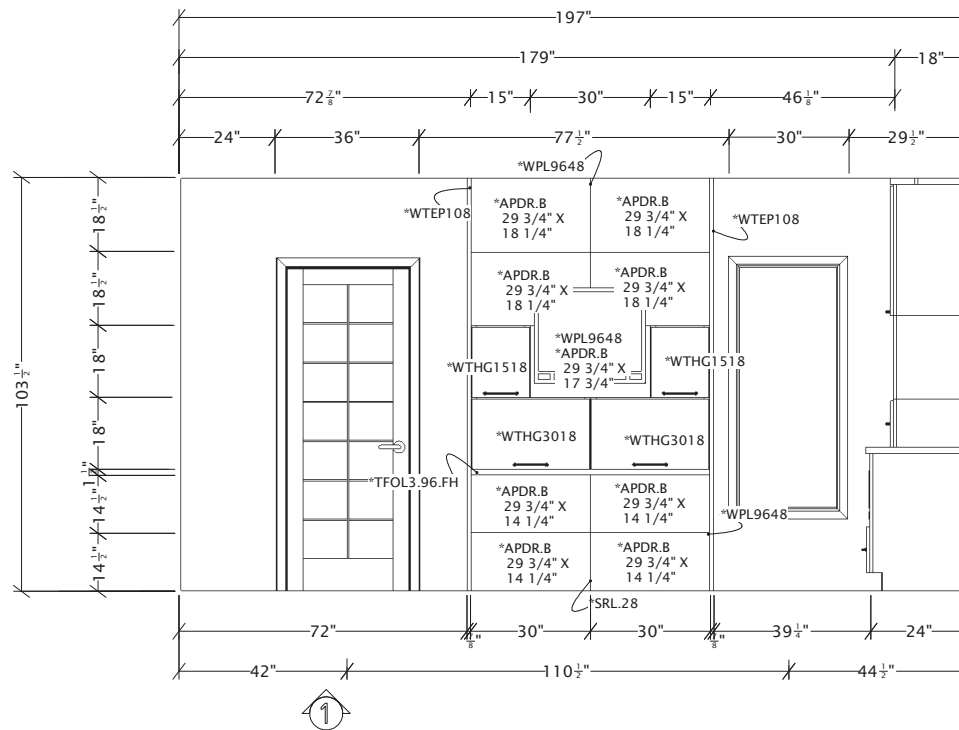


© 2013 MASCO Cabinetry, LLC All Rights Reserved		KraftMaid	Designed: 6/17/2013 Printed: 6/17/2013
			PAGE 1 OF 9
KM_2014_MODEST	FLOOR PLAN	Drawing #: 1	Scale : 0 3/8" = 1'



INSTALLATION NOTES

* DENOTES ACORN LINEA FINISH

*2-WTEP108: CUT EACH TO 103 1/2" X 12" DEEP. SECURE EACH WHERE NOTED.

*WPL9648: BUILD SUPPORT OUT OF FRAMING LUMBER TO FIT BETWEEN *WTEP108 PANELS, ABOVE *WTHG1518 CABINETS, AND BELOW CEILING. BOX WILL MEASURE APPROXIMATELY 60" WIDE X 11 5/8" DEEP X 37" HIGH. CUT *WPL9648 TO FIT TO CONCEAL FRAMING LUMBER. *WPL9648 WILL MEASURE APPROXIMATELY 60" WIDE X 37" HIGH. ATTACH TO FRAMING LUMBER FROM BEHIND.

*4-APDR.B: SPACE EVENLY AND ATTACH EACH *APDR.B TO *WPL9648 FROM BEHIND.

*WPL9648 AND *APDR.B: BUILD SUPPORT OUT OF FRAMING LUMBER TO FIT BETWEEN *WTHG1518 CABINETS (BEHIND TV). SUPPORT WILL MEASURE APROXIMATELY 30" WIDE X 18" HIGH X 11 5/8" DEEP. CUT *WPL9648 TO APPROXIMATELY 30" WIDE X 18" HIGH. ATTACH TO CONCEAL FRAMING LUMBER. CENTER *APDR.B IN FRONT OF *WPL9648 AND SECURE FROM BEHIND.

*TFOL3.96.FH: CUT TO FIT (APPROXIMATELY 1 1/2" HIGH X 60" WIDE). INSTALL WHERE NOTED, EVEN WITH FACE OF *WPL9648.

*WPL9648: BUILD SUPPORT OUT OF FRAMING LUMBER TO FIT BETWEEN *WTEP108 PANELS, BELOW COUNTERTOP, AND ABOVE FLOOR LINE. BOX WILL MEASURE APPROXIMATELY 60" WIDE X 29" HIGH X 11 5/8" DEEP. CUT *WPL9648 TO FIT TO CONCEAL FRAMING LUMBER. *WPL9648 WILL MEASURE APPROXIMATELY 60" WIDE X 29" HIGH. ATTACH TO FRAMING LUMBER FROM BEHIND.

*4-APDR.B: SPACE EVENLY AND ATTACH EACH *APDR.B TO *WPL9648 FROM BEHIND.

*SRL.28: ADJUST HEIGHT TO FIT. CENTER IN FRONT OF UNIT AND BENEATH COUNTERTOP, AND SECURE.

SEE TRACY OR TRACI FOR HARDWARE PLACEMENT.

© 2013
MASCO Cabinetry, LLC
All Rights Reserved

KraftMaid

Designed: 6/17/2013
Printed: 6/17/2013

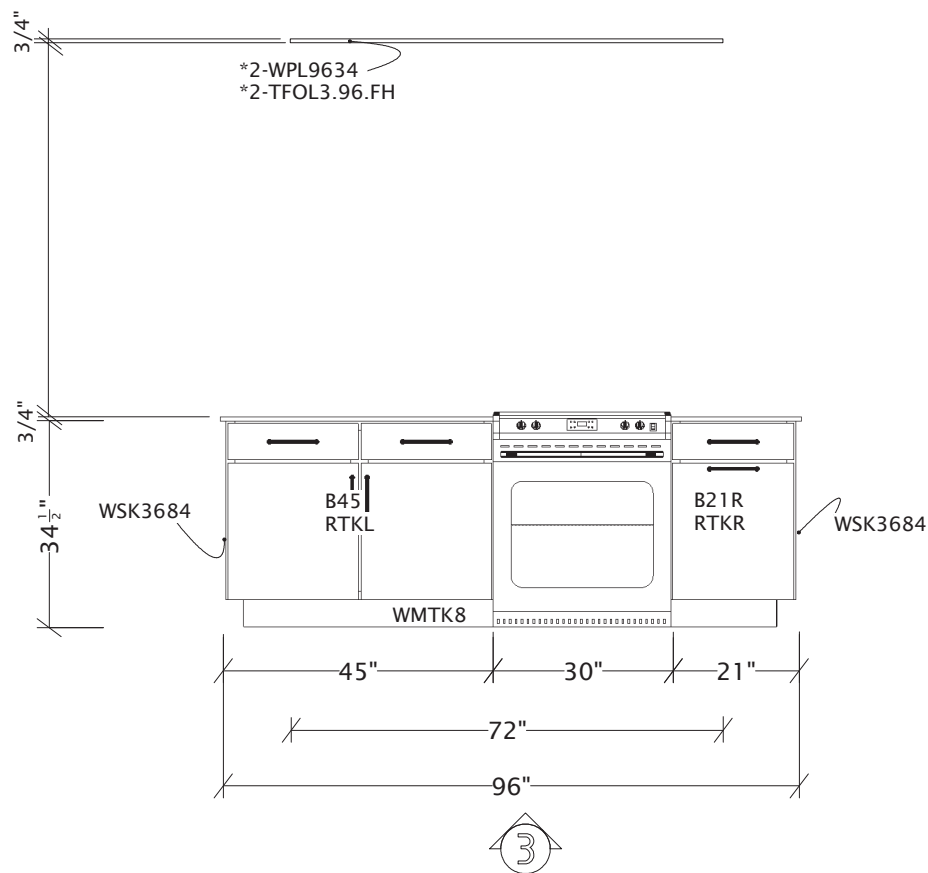
PAGE 2 OF 9

KM_2014_MODEST

EI 1

Drawing #: 1

Scale : 0 1/4" = 1'



INSTALLATION NOTES:

* DENOTES ACORN LINEA FINISH

WSK3684: CUT TWO PIECES MEASURING APPROXIMATELY 34 1/2" WIDE X 30" HIGH. SECURE EACH WHERE NOTED TO CONCEAL SEAMS BETWEEN CABINETS IN ELEVATION 3 AND CABINETS IN ELEVATION 4.

*2-WPL9634 AND *2-TFOL3.96.FH: OVERALL SIZE OF THE UNIT ABOVE THE ISLAND TO BE 30" DEEP X 72" WIDE. CUT *2-WPL9634 TO FIT AND SECURE TOGETHER TO FORM 3/4" THICKNESS. CUT *2-TFOL3.96.FH TO FIT TO MAKE A BOX AND TO GIVE THE PANELS THICKNESS ON THE SIDES. SPACE EVENLY, CENTER AND INSTALL FOUR LIGHT PUCKS (BY OTHERS). SUSPEND 6" FROM CEILING.

SEE TRACY OR TRACI FOR HARDWARE PLACEMENT.

© 2013
MASCO Cabinetry, LLC
All Rights Reserved

KraftMaid

Designed: 6/17/2013
Printed: 6/17/2013

PAGE 4 OF 9

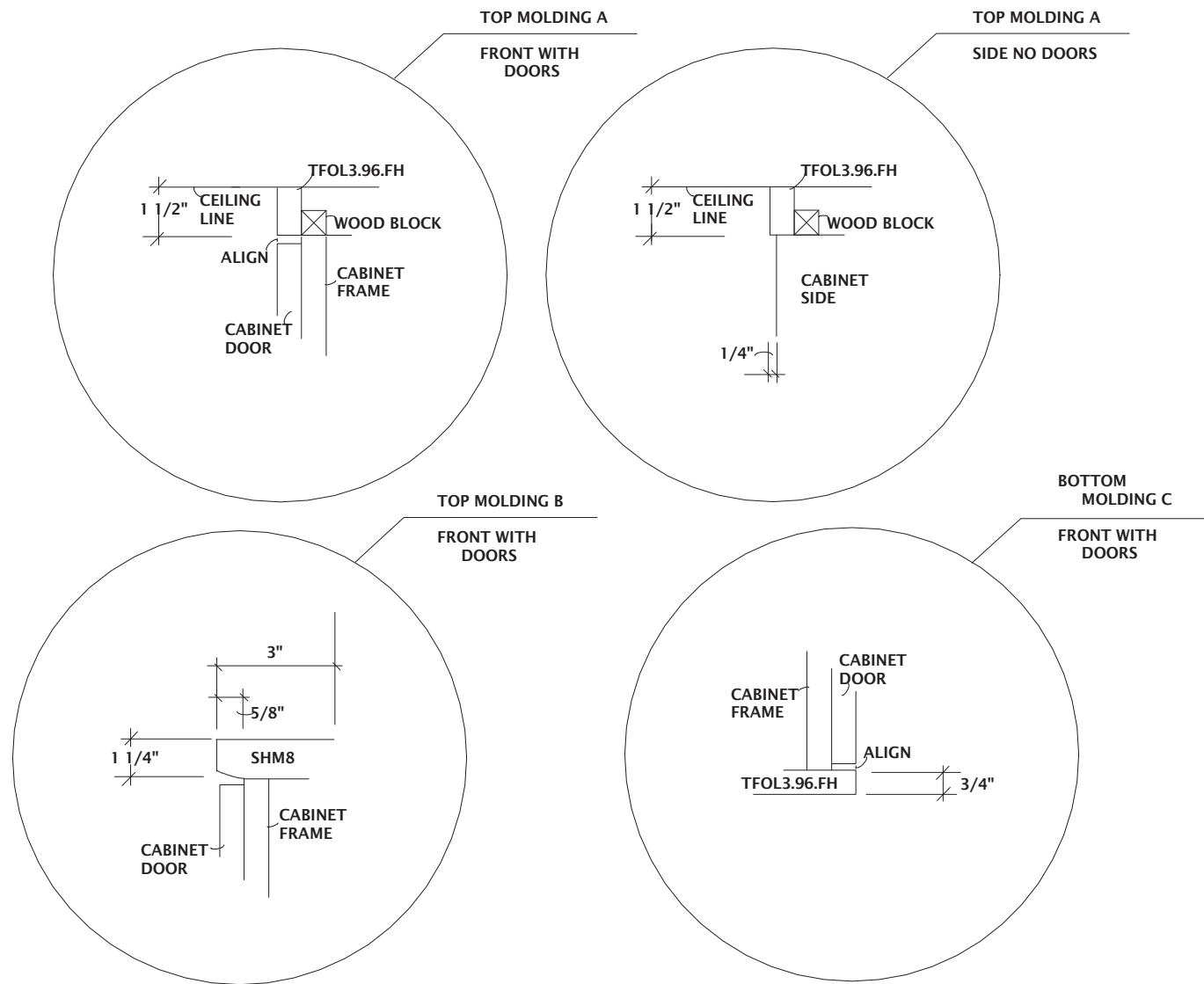
KM_2014_MODEST

EI 3

Drawing #: 1

Scale : 0 3/8" = 1'

MOLDING DETAILS



© 2013
MASCO Cabinetry, LLC
All Rights Reserved

KraftMaid

Designed: 6/4/2013
Printed: 6/5/2013

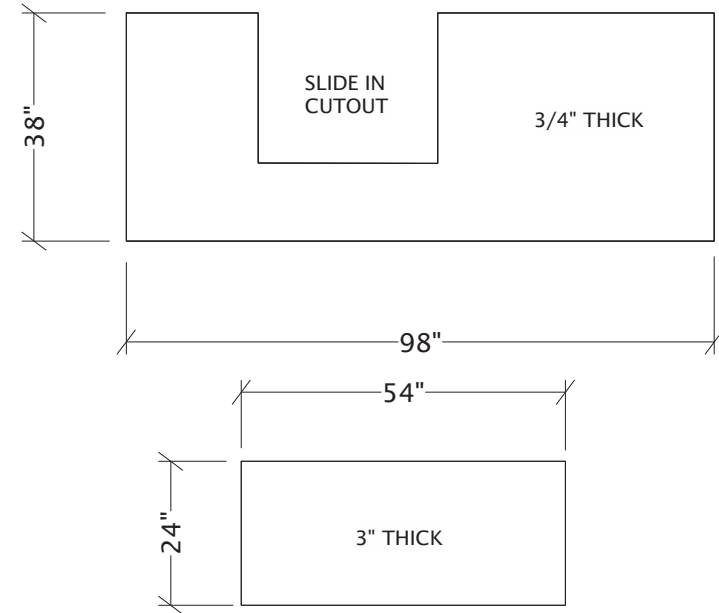
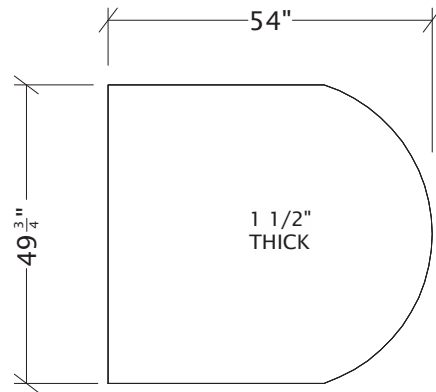
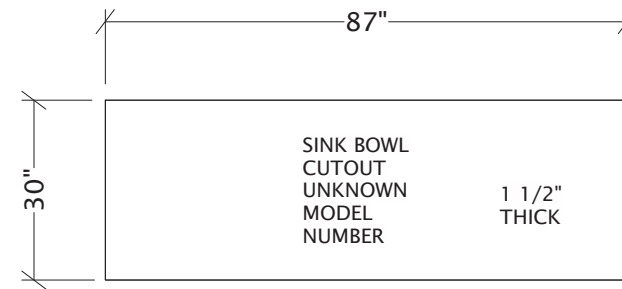
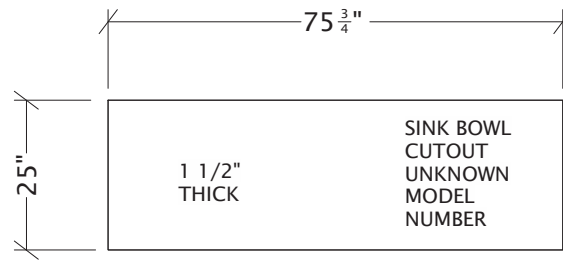
PAGE 6 OF 9

KM_2014_MODEST

MOLDING

Drawing #: 1

Scale : 0 3/8" = 1'



THIS DRAWING IS FOR CONCEPT USE ONLY. ALL DIMENSIONS NEED TO BE FIELD VERIFIED FROM THE INSTALLED CABINETRY. IT IS THE RESPONSIBILITY OF THE COUNTERTOP FABRICATOR TO FIELD VERIFY ALL DIMENSIONS BASED ON MATERIAL TYPE AND SPECIFICATIONS.

COUNTERTOP DETAILS

© 2013
MASCO Cabinetry, LLC
All Rights Reserved

KraftMaid

Designed: 6/4/2013
Printed: 6/17/2013

PAGE 7 OF 9

KM_2014_MODEST

COUNTERTOPS

Drawing #: 1

Scale : 0 3/8" = 1'



© 2013
MASCO Cabinetry, LLC
All Rights Reserved

KraftMaid

Designed: 6/17/2013
Printed: 6/17/2013

PAGE 8 OF 9

KM_2014_MODEST MOD SET #2_FINAL01

FLOOR PLAN

Drawing #: 1



© 2013
MASCO Cabinetry, LLC
All Rights Reserved

KraftMaid

Designed: 6/17/2013
Printed: 6/17/2013

PAGE 9 OF 9

KM_2014_MODEST MOD SET #2_FINAL01

FLOOR PLAN

Drawing #: 1