

© 2013 Masco Cabinetry, LLC  
All Rights Reserved

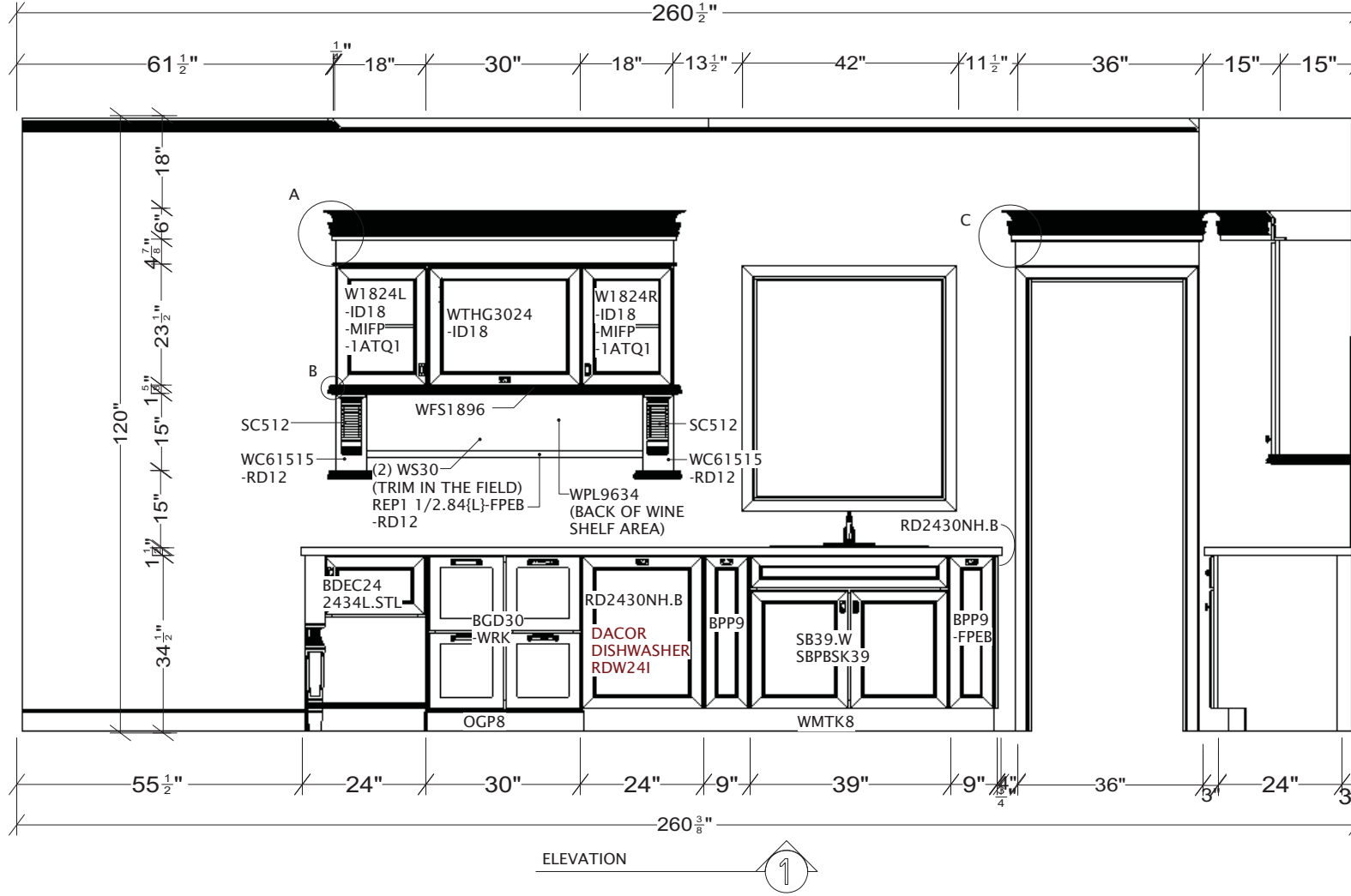
**KraftMaid**  
Cabinetry

Designed: 6/6/2013  
Printed: 10/22/2013

2014

FLOORPLAN

Scale : 0 5/16" = 1'



**INSTALLATION NOTES:**

**WFS1896:**  
CUT TO SIZE AND INSTALL BELOW THE W1824/ WTHG3024 AND BEHIND THE STLR8 LIGHT RAIL MOLDING.

**SC512/WC61515:**  
SECURE THE SC512 CORBELS TO THE FRONT OF THE WC61515's. SECURE FROM THE BOTTOM OF THE W1824 CABINETS ABOVE AS WELL IF NEEDED.

**WPL9634:**  
CUT TO 54" W X 12" H AND INSTALL ON THE WALL BETWEEN THE WC61515's.

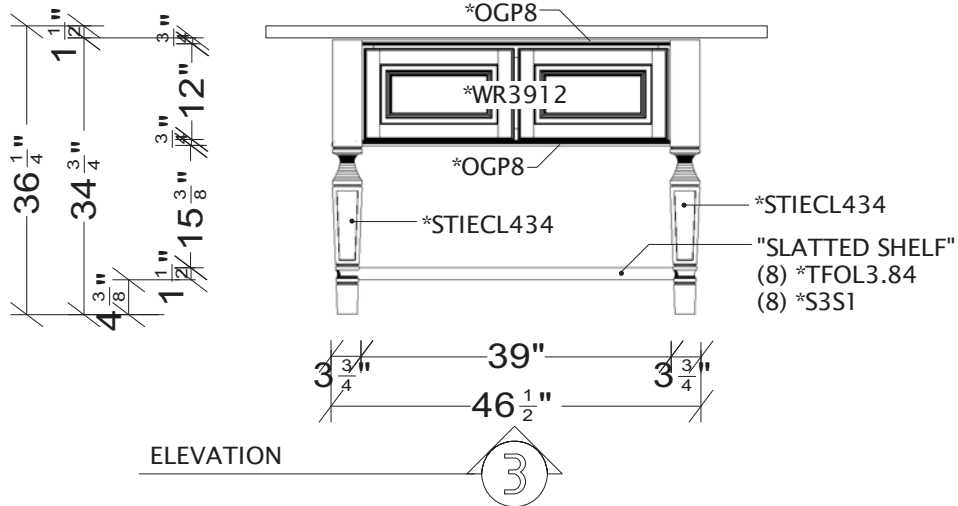
**REP1 1/2.84:**  
CUT TO 54" W X 12" D AND INSTALL HORIZONTALLY BETWEEN THE WC61515's AS A SHELF.

**(2) WS30:**  
CUT WIDTH AS NEEDED TO FIT SIDE BY SIDE ON THE REP1 1/2.84 SHELF.

**RD2430NH.B:**  
INSTALL AS THE CUSTOM PANEL ON THE DISHWASHER.

**RD2430NH.B:**  
INSTALL ON THE RIGHT SIDE OF THE BPP9 SECURING FROM INSIDE THE CABINET. ALIGN AT THE TOP AND BOTTOM WITH THE BPP9 DOOR.





#### INSTALLATION NOTES:

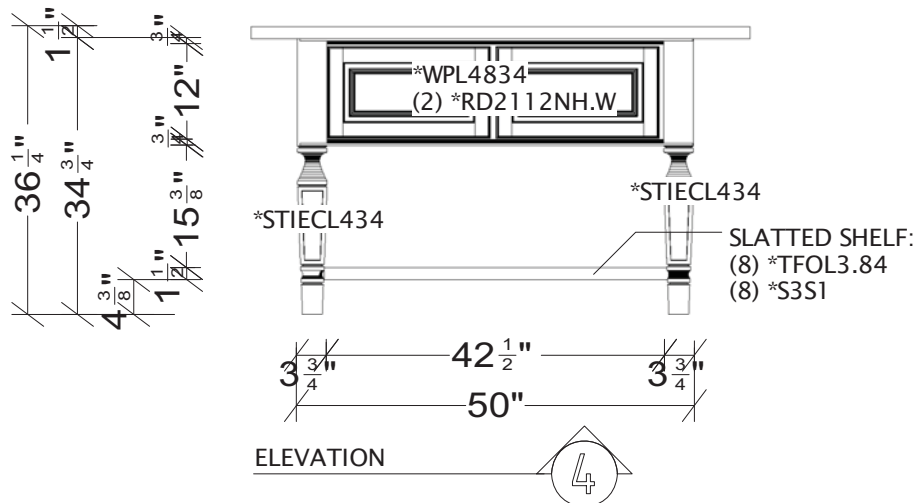
TABLE IN DISTRESSED AUTUMN BLUSH FINISH.

#### \*OGP8:

INSTALL AT THE TOP AND BOTTOM OF THE \*WR3912 ON ALL SIDES OF THE TABLE. PULL THE MOLDING TO BE FLUSH WITH THE CABINET DOORS.

#### "SLATTED SHELF"

TRIM \*TFOL3.84's AS NEEDED AND INSTALL SIDE BY SIDE CREATING A SHELF. USE \*S3S1 ALONG THE EDGES. NOTCH "SHELF" AT THE CORNERS WHERE THE \*STIECL434 LEGS ARE. EXTRA \*S3S1 PROVIDED IF SUPPORT IS NEEDED ALONG THE BOTTOM OF THE SHELF.



#### INSTALLATION NOTES:

TABLE IN DISTRESSED AUTUMN BLUSH FINISH.

#### \*WPL4834:

CUT TO 42 1/2" W X 12" H AND INSTALL BETWEEN THE \*STIECL434's SET BACK 1" FROM THE FACE OF THE LEGS. INSTALL (2) \*RD2112NH.W DOORS EVENLY SPACED ON THE FRONT OF THE PANEL.

#### \*OGP8:

INSTALL AT THE TOP AND BOTTOM OF THE \*WR3912/\*WPL4834 ON ALL SIDES OF THE TABLE. PULL THE MOLDING TO BE FLUSH WITH THE CABINET DOORS/\*RD2112NH.W.

#### "SLATTED SHELF"

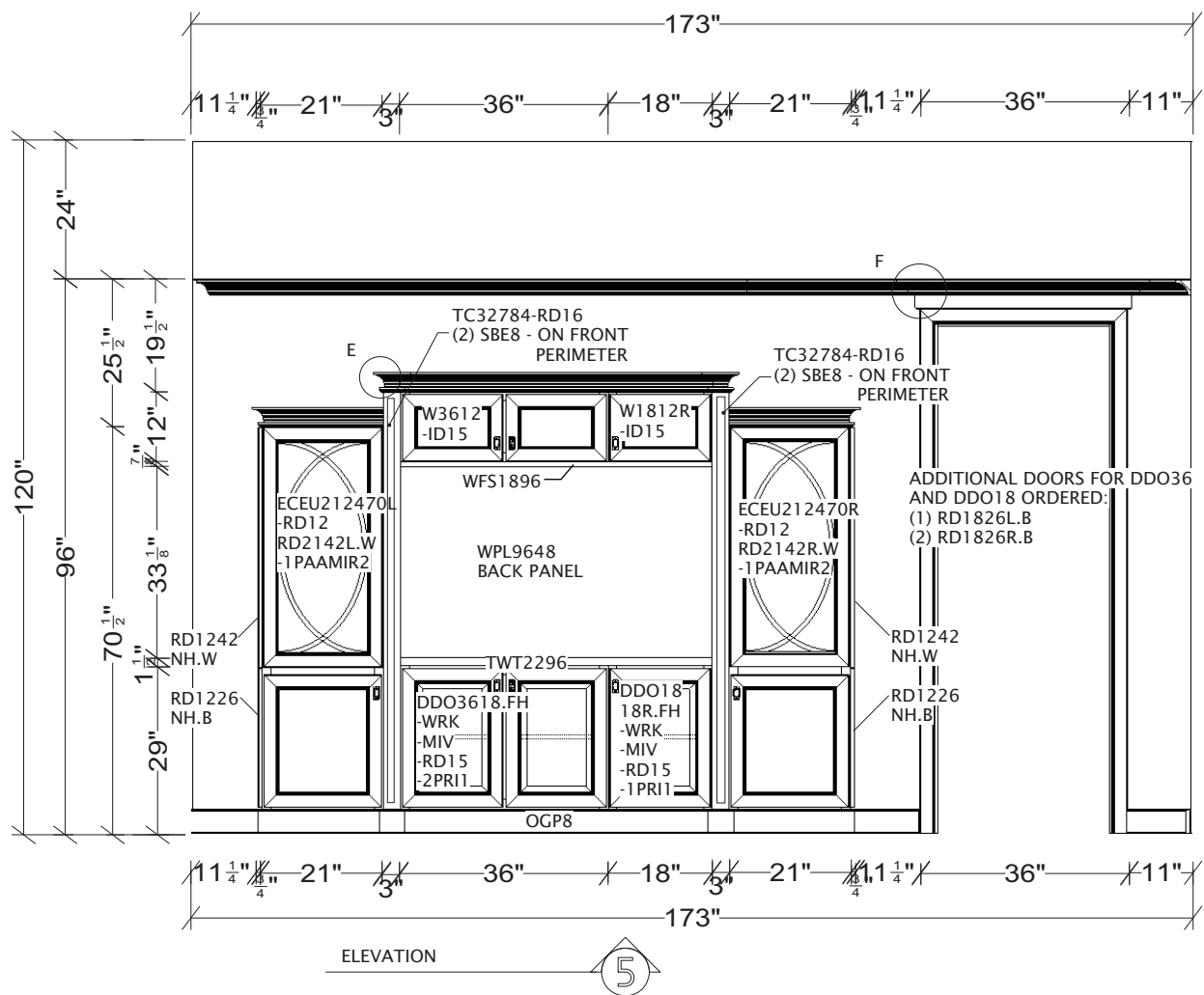
TRIM \*TFOL3.84's AS NEEDED AND INSTALL SIDE BY SIDE CREATING A SHELF. USE \*S3S1 ALONG THE EDGES. NOTCH "SHELF" AT THE CORNERS WHERE THE \*STIECL434 LEGS ARE. EXTRA \*S3S1 PROVIDED IF SUPPORT IS NEEDED ALONG THE BOTTOM OF THE SHELF.

2013 Masco Cabinetry, LLC  
All Rights Reserved

**KraftMaid**  
Cabinetry

Designed :6/6/2013  
Printed: 6/16/2013

PAGE 4 OF 13



#### INSTALLATION NOTES:

RD1242NH.W/RD1226NH.B:  
INSTALL ON THE LEFT SIDE OF THE  
ECEU212470L AND THE RIGHT SIDE  
OF THE ECEU212470R SECURING  
FROM INSIDE THE CABINETS. ALIGN  
DOORS AT TOP AND BOTTOM WITH  
CABINET DOORS.

RD2142L/W:  
INSTALL REPLACEMENT DOORS ON THE  
OPEN TOP SECTION OF BOTH ECEU212470's.

WFS1896:  
CUT TO SIZE AND INSTALL BELOW THE W3612  
AND W1812R.

WPL9648:  
CUT TO 54" W X 33 1/8" H AND INSTALL BETWEEN  
THE TC32784's. PULL +/-9" FROM THE BACK WALL  
AND ADD BLOCKING AS NEEDED FOR SUPPORT  
BEHIND THE PANEL.

(2) TC32784:  
INSTALL SBE8 MOLDING AROUND THE PERIMETER  
ON THE FRONT OF EACH COLUMN. LEAVE 4 5/8" AT  
BOTTOM FOR OGP8 MOLDING.

TWT2296:  
CUT TO 54" W AND INSTALL ON TOP OF  
DDO36/18 CABINETS.

2013 Masco Cabinetry, LLC  
All Rights Reserved

**KraftMaid**  
Cabinetry

Designed: 6/6/2013  
Printed: 6/16/2013

PAGE 5 OF 13

2014

EI 5

Scale : 0 3/8" = 1'



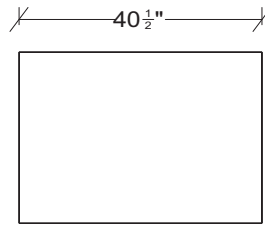
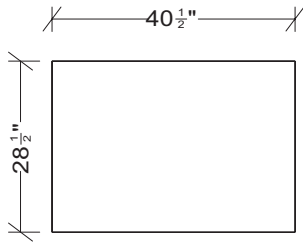
© 2013 Masco Cabinetry, LLC  
All Rights Reserved

**KraftMaid**  
Cabinetry

Designed: 6/6/2013  
Printed: 10/22/2013

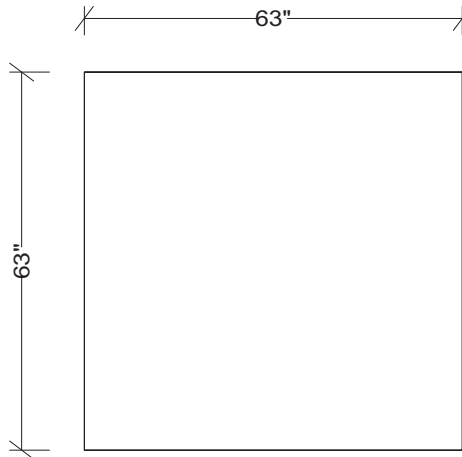
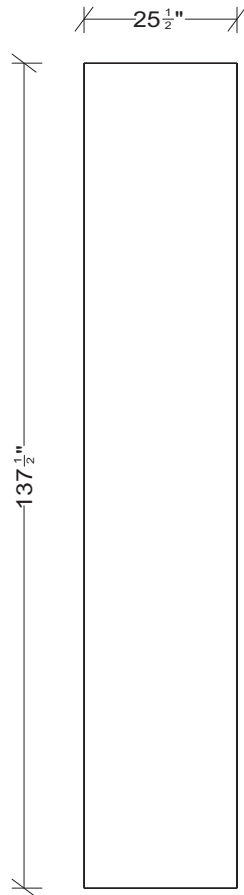
2014 PHOTOGRAPHY\_KM\_COBBLESTONE 2

FLOORPLAN



INSTALLATION NOTES:

THIS DRAWING IS FOR CONCEPT USE ONLY.  
ALL DIMENSIONS NEED TO BE FIELD VERIFIED  
FROM THE INSTALLED CABINETRY. IT IS THE  
RESPONSIBILITY OF THE COUNTERTOP  
FABRICATOR TO FIELD VERIFY ALL DIMENSIONS.



## COUNTERTOP DETAILS

2013 Masco Cabinetry, LLC  
All Rights Reserved

**KraftMaid**  
Cabinetry

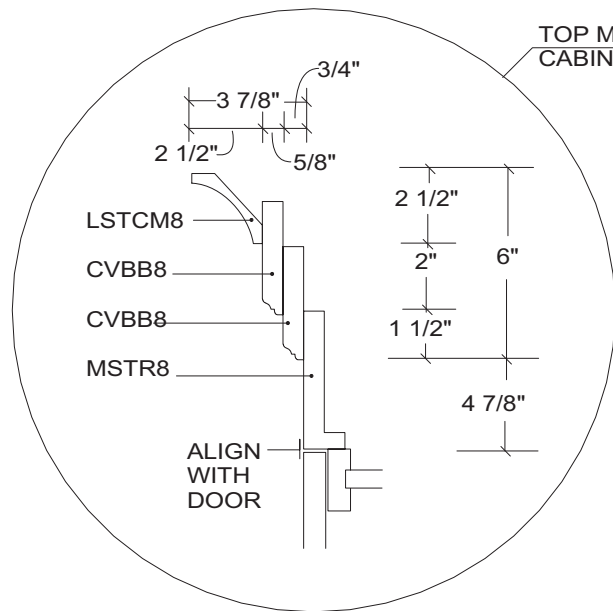
Designed: 6/6/2013  
Printed: 6/6/2013

PAGE 10 OF 13

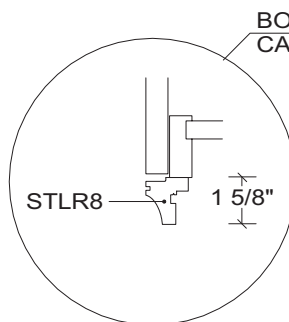
2014

COUNTERTOPS

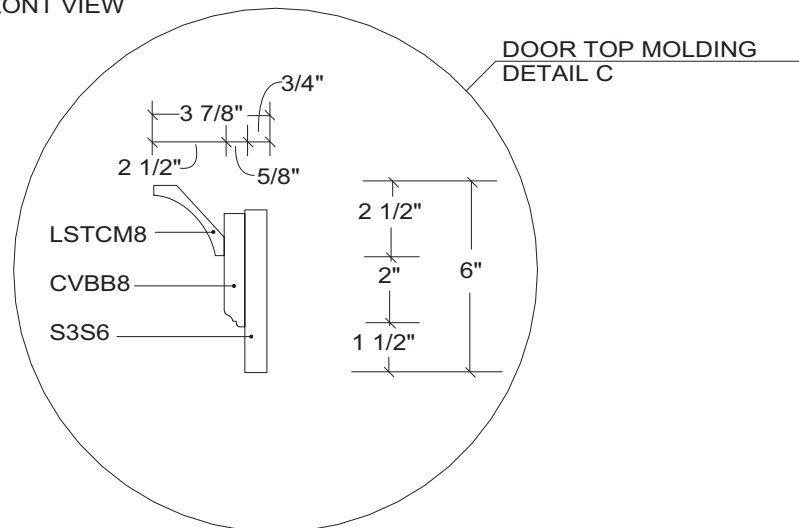
Scale : 0 3/8" = 1'



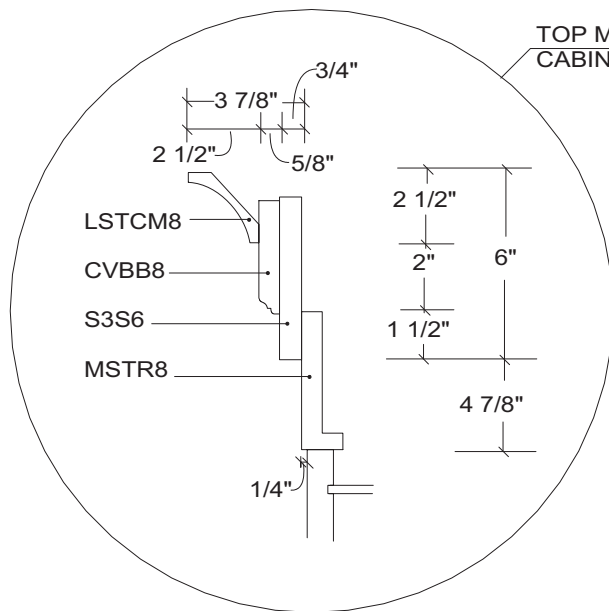
TOP MOLDING: DETAIL A  
CABINET FRONT VIEW



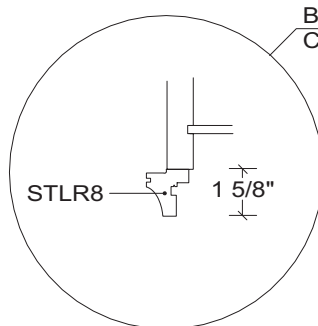
BOTTOM MOLDING: DETAIL B  
CABINET FRONT VIEW



DOOR TOP MOLDING  
DETAIL C



TOP MOLDING: DETAIL A  
CABINET SIDE VIEW



BOTTOM MOLDING: DETAIL B  
CABINET SIDE VIEW

## MOLDING DETAILS

NOT TO SCALE

2013 Masco Cabinetry, LLC  
All Rights Reserved

**KraftMaid**  
Cabinetry

Designed: 6/6/2013  
Printed: 6/16/2013

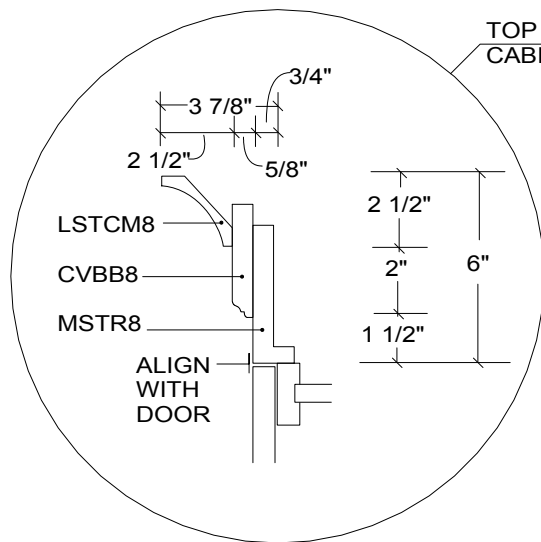
PAGE 11 OF 13

2014

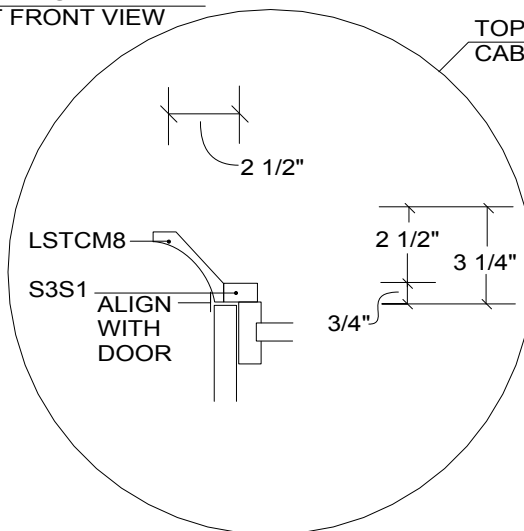
MOLDING

Scale : 0 3/8" = 1'

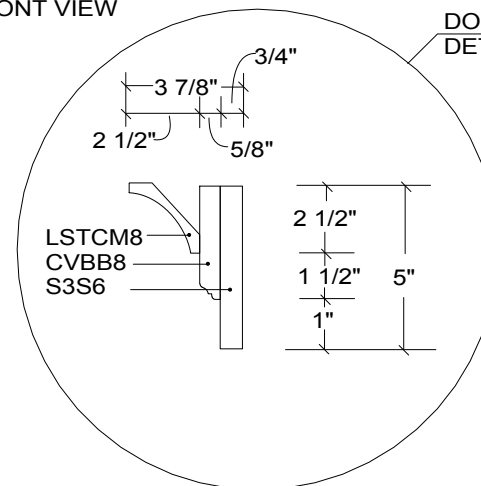




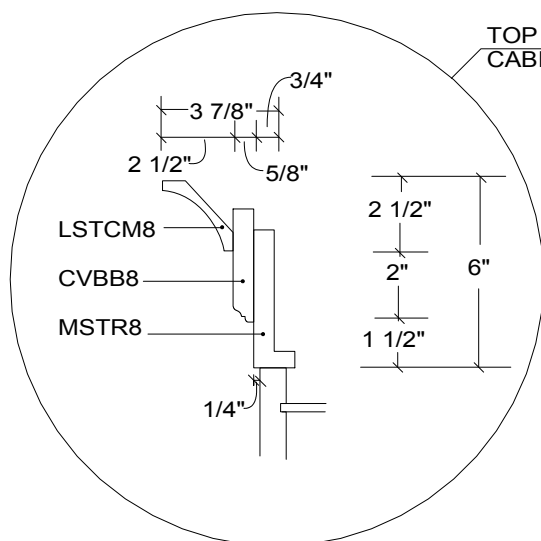
TOP MOLDING: DETAIL D  
CABINET FRONT VIEW



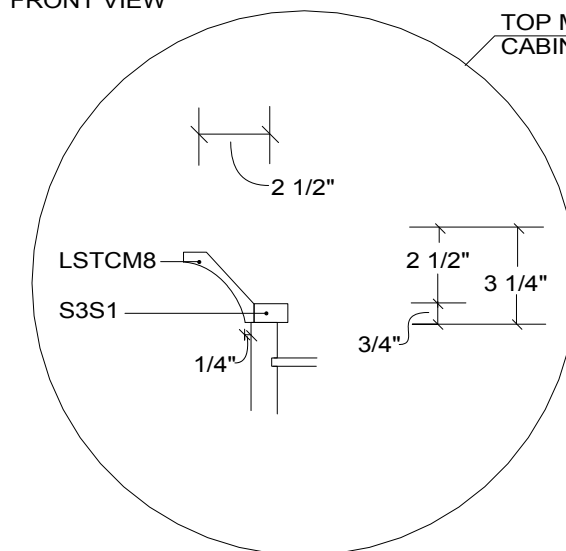
TOP MOLDING: DETAIL E  
CABINET FRONT VIEW



DOOR TOP MOLDING  
DETAIL F - ELEVATION 5



TOP MOLDING: DETAIL D  
CABINET FRONT VIEW



TOP MOLDING: DETAIL E  
CABINET SIDE VIEW (NO DOORS)

## MOLDING DETAILS

NOT TO SCALE

2013 Masco Cabinetry, LLC  
All Rights Reserved

KraftMaid  
Cabinetry

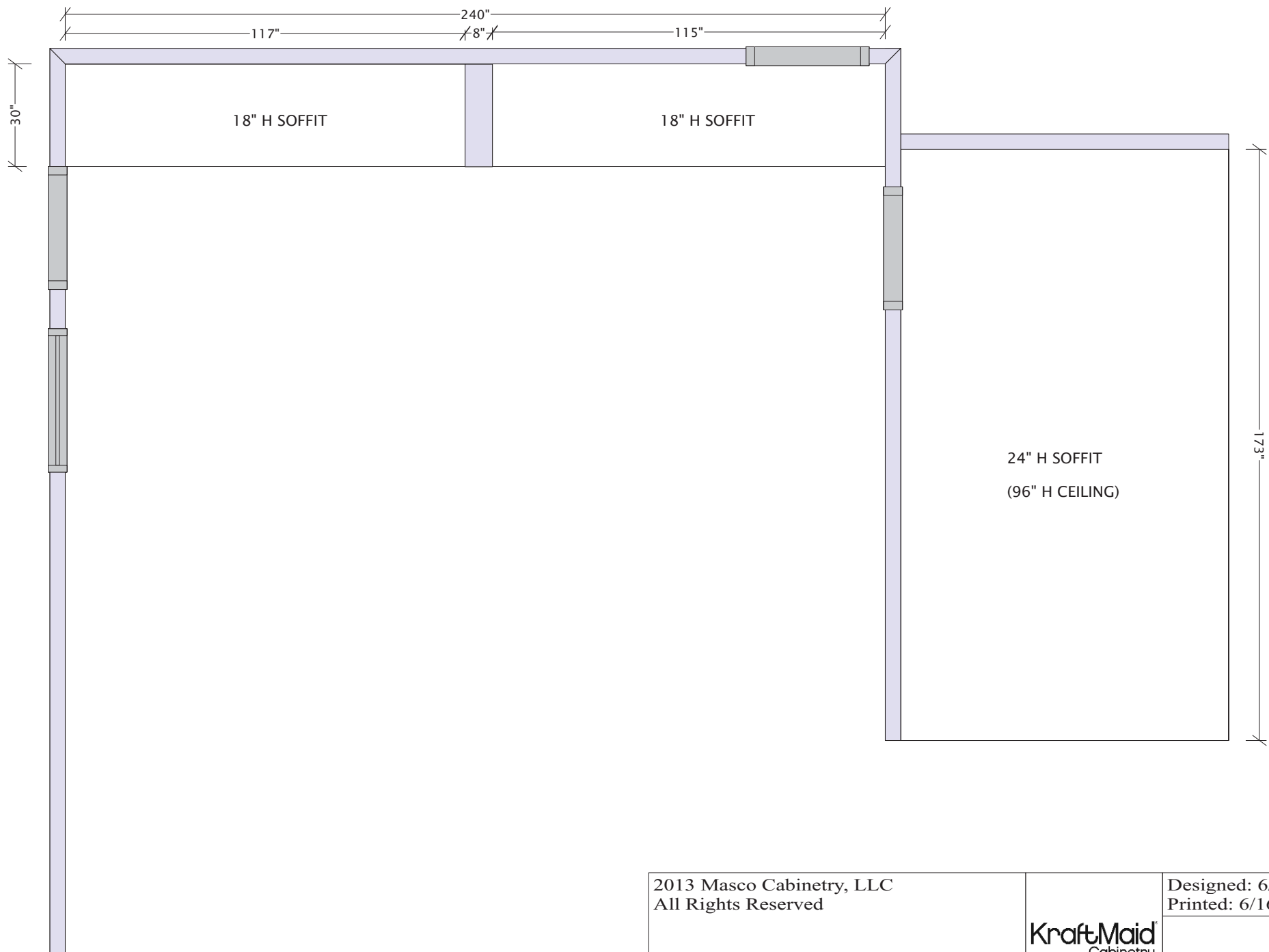
Designed: 6/6/2013  
Printed: 6/17/2013

PAGE 12 OF 13

2014

MOLDING

Scale : 0 3/8" = 1'



## SOFFIT PLAN

2013 Masco Cabinetry, LLC  
All Rights Reserved

**KraftMaid**  
Cabinetry

Designed: 6/6/2013  
Printed: 6/16/2013

PAGE 13 OF 13

2014

SOFFIT

Scale : 0 5/16" = 1'