

© 2011
 Masco Cabinetry, LLC
 All Rights Reserved

KraftMaid
 Cabinetry

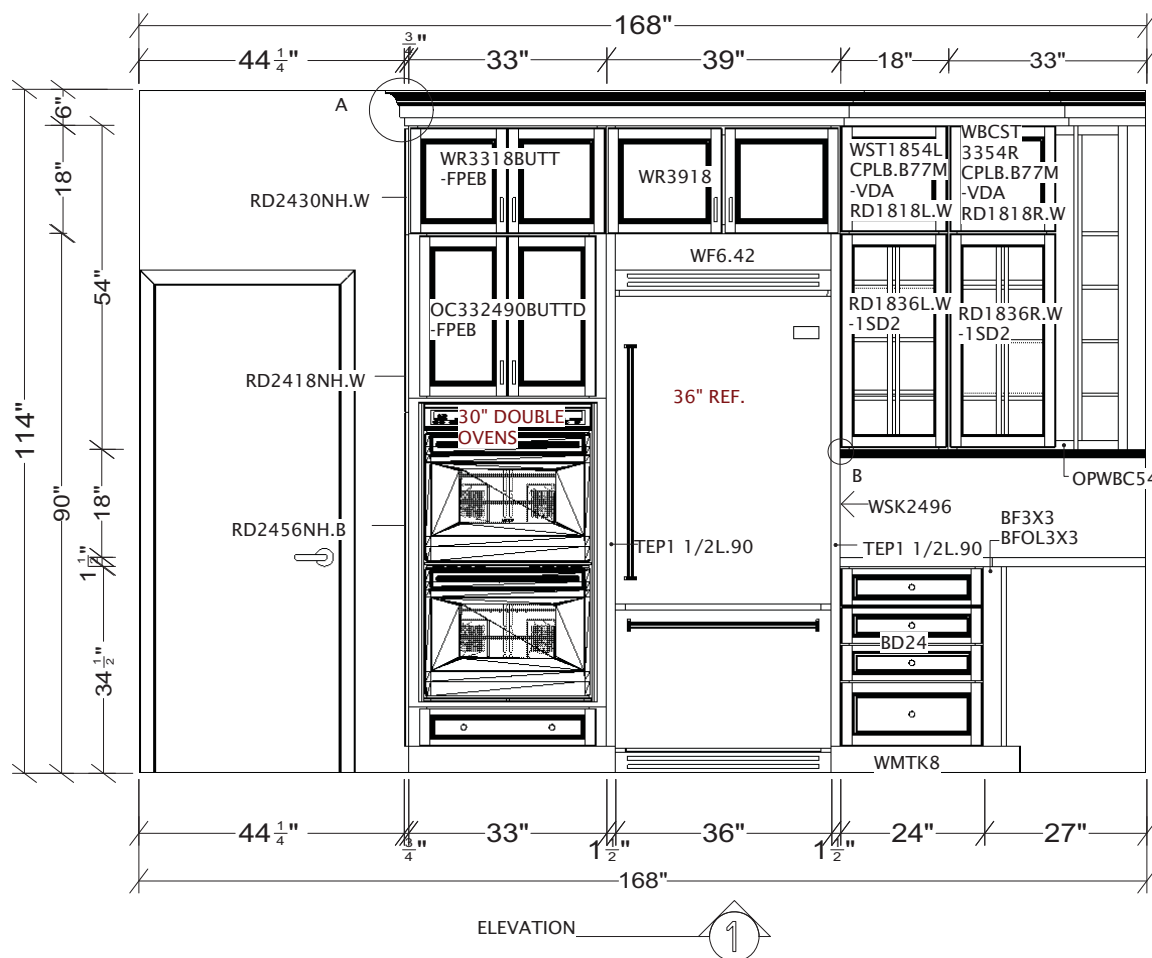
Designed: 9/19/2011
 Printed: 10/17/2011

PAGE 1 OF 17

2012 PHOTOGRAPHY_SET 1 CORNELL

FLOORPLAN

Scale : 0 3/8" = 1'



INSTALLATION NOTES:

RD2430NH.W/RD2418NH.W/RD2456NH.B:
INSTALL ON THE LEFT SIDE OF THE
WR3318BUTT AND OC332490BUTTD.

WF6.42:
CUT TO SIZE AND INSTALL BETWEEN THE
TEP1 1/2 TO FILL IN ABOVE THE REFRIGERATOR
AS NEEDED.

WSK2496:
INSTALL ON THE RIGHT SIDE OF THE WR3918/
TEP1 1/2R.90. SHIFT UP TO ALIGN WITH THE TOP
OF THE WR3918.

WBCST3354R:
PULL 3" FROM THE WALL AT THE RIGHT.

OPWBC54:
CUT INTO (2) VERTICAL STRIPS AND INSTALL
OVER THE BLIND PANEL STILE ON THE
WBCST3354R AND THE FILLER ON ELEVATION 2.
MITER AT THE CORNER.

BF3X3/BFOL3X3:
INSTALL THE BFOL3X3 ON THE BF3X3. INSTALL
IN THE CORNER BETWEEN THE BD24 AND THE
B18L.FH ON ELEVATION 2.

© 2011
Masco Cabinetry, LLC
All Rights Reserved

KraftMaid
Cabinetry

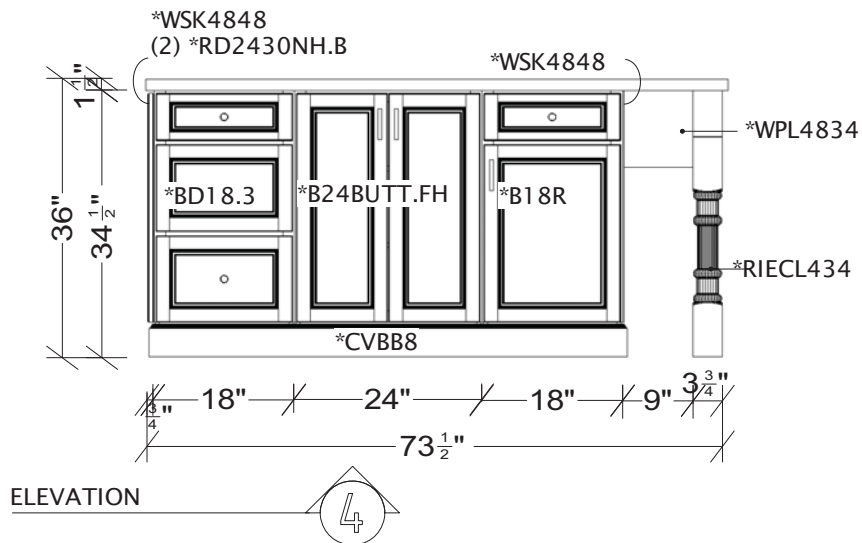
Designed: 9/19/2011
Printed: 10/17/2011

PAGE 2 OF 17

2012 PHOTOGRAPHY_SET 1 CORNELL

EI 1

Scale : 0 3/8" = 1'



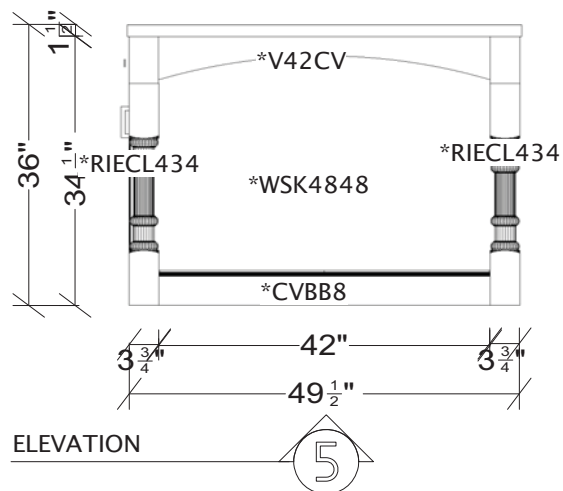
INSTALLATION NOTES:

*ISLAND IN MIDNIGHT FINISH.

(2) *WSK4848:
CUT TO SIZE AND AND INSTALL ON THE SIDES OF THE ISLAND.

(2) *RD2430NH.B:
INSTALL SIDE BY SIDE ON THE SIDE OF THE ISLAND OVER THE *WSK4848.

*WPL4834:
CUT THE *WPL TO 9" W X 12" H AND INSTALL BETWEEN THE ISLAND AND THE *RIECL434. CUT AN ADDITIONAL PIECE THE SAME SIZE AND APPLY IT TO THE BACK IF THE BACK SIDE NEEDS TO BE FINISHED AS WELL.



INSTALLATION NOTES:

*ISLAND IN MIDNIGHT FINISH.

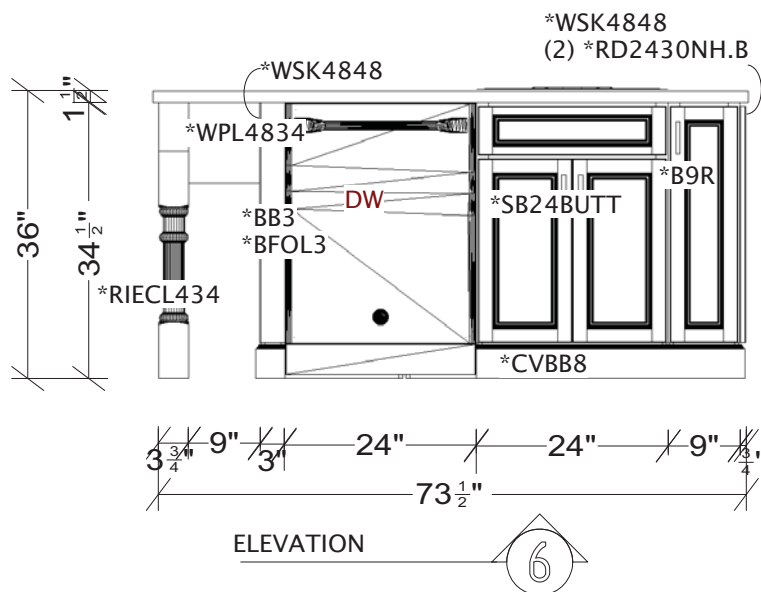
*WSK4848:
CUT TO SIZE AND INSTALL ON THE END OF THE ISLAND. NOTCH THE BOTTOM CORNERS FOR TOE KICK.

© 2011
Masco Cabinetry, LLC
All Rights Reserved

KraftMaid
Cabinetry

Designed :9/19/2011
Printed: 10/17/2011

PAGE 5 OF 17



INSTALLATION NOTES:

*ISLAND IN MIDNIGHT FINISH.

(2) *WSK4848:
CUT TO SIZE AND AND INSTALL ON THE
SIDES OF THE ISLAND.

(2) *RD2430NH.B:
INSTALL SIDE BY SIDE ON THE SIDE OF
THE ISLAND OVER THE *WSK4848.

*WPL4834:
CUT THE *WPL TO 9" W X 12" H AND INSTALL
BETWEEN THE ISLAND AND THE *RIECL434.
CUT AN ADDITIONAL PIECE THE SAME SIZE
AND APPLY IT TO THE BACK IF THE BACK
SIDE NEEDS TO BE FINISHED AS WELL.

© 2011
Masco Cabinetry, LLC
All Rights Reserved

KraftMaid
Cabinetry

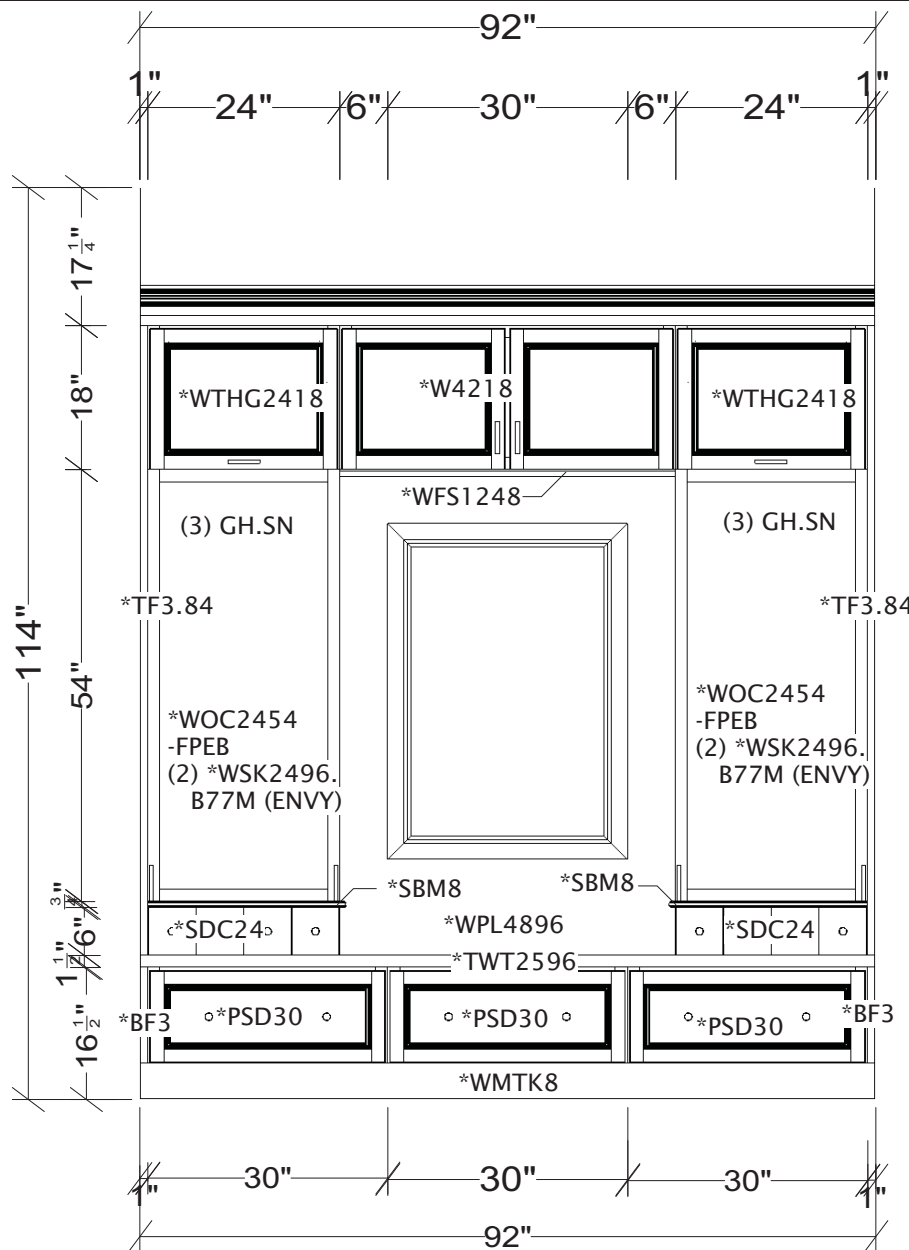
Designed: 9/19/2011
Printed: 10/17/2011

PAGE 6 OF 17

2012 PHOTOGRAPHY_SET 1 CORNELL

EI 6

Scale : 0 1/2" = 1'



ELEVATION



INSTALLATION NOTES:

*CABINETS IN MIDNIGHT FINISH.

(2) *TF3.84:
CUT TO 1" W X 72" H AND INSTALL
TO THE LEFT AND RIGHT OF THE
*WTHG2418 AND *WOC2454 FLUSH WITH
THE CABINET FRAMES.

(2) *WSK2496.B77M (ENVY):
CUT TO SIZE AND INSTALL ON THE BACK
OF THE *WOC2454's.

(6) GH.SN:
INSTALL (3) GARMENT HOOKS EVENLY SPACED
ON THE BACK WALL OF THE *WOC2454's AT 72" AFF.

*SBM8:
INSTALL BETWEEN THE *WOC2454 AND
*SDC24 ON THE FRONT AND SIDES OF
THE CABINET.

*WFS1248:
CUT TO 42" W AND INSTALL BELOW THE
W4218.

*WPL4896:
CUT TO SIZE AND INSTALL ON THE WALL
AROUND THE WINDOW.

*TWT2596:
CUT TO SIZE AND INSTALL ON TOP OF
THE *PSD30's.

(2) *BF3:
CUT TO 1" W X 12" H AND INSTALL TO THE
LEFT AND RIGHT OF THE *PSD30 FLUSH WITH
THE CABINET FRAME.

© 2011
Masco Cabinetry, LLC
All Rights Reserved

KraftMaid
Cabinetry

Designed: 9/19/2011
Printed: 10/18/2011

PAGE 7 OF 17

2012 PHOTOGRAPHY_SET 1 CORNELL

EI 7

Scale : 0 1/2" = 1'



© 2011
Masco Cabinetry, LLC
All Rights Reserved

KraftMaid
Cabinetry

Designed: 9/19/2011
Printed: 9/29/2011

PAGE 8 OF 17

2012 PHOTOGRAPHY_SET 1 CORNELL

FLOORPLAN



© 2011
Masco Cabinetry, LLC
All Rights Reserved

KraftMaid
Cabinetry

Designed: 9/19/2011
Printed: 9/28/2011

PAGE 9 OF 17

2012 PHOTOGRAPHY_SET 1 CORNELL

FLOORPLAN



© 2011
Masco Cabinetry, LLC
All Rights Reserved

KraftMaid
Cabinetry

Designed: 9/19/2011
Printed: 9/28/2011

PAGE 10 OF 17

2012 PHOTOGRAPHY_SET 1 CORNELL

FLOORPLAN



© 2011
Masco Cabinetry, LLC
All Rights Reserved

KraftMaid
Cabinetry

Designed: 9/19/2011
Printed: 9/28/2011

PAGE 11 OF 17



© 2011
Masco Cabinetry, LLC
All Rights Reserved

KraftMaid
Cabinetry

Designed: 9/19/2011
Printed: 9/28/2011

PAGE 12 OF 17

2012 PHOTOGRAPHY_SET 1 CORNELL

FLOORPLAN



© 2011
Masco Cabinetry, LLC
All Rights Reserved

KraftMaid
Cabinetry

Designed: 9/19/2011
Printed: 9/28/2011

PAGE 13 OF 17



© 2011
Masco Cabinetry, LLC
All Rights Reserved

KraftMaid
Cabinetry

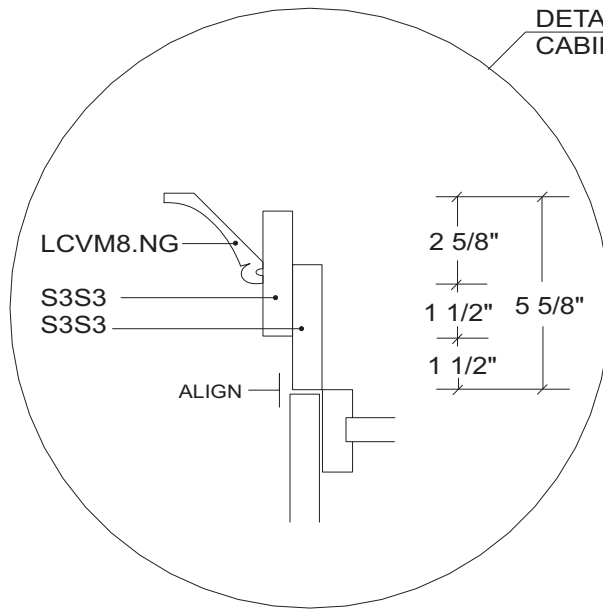
Designed: 9/19/2011
Printed: 10/18/2011

PAGE 14 OF 17

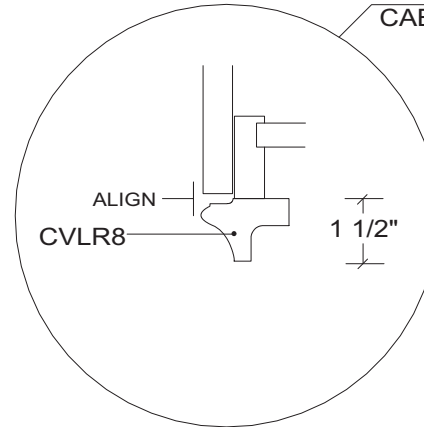
2012 PHOTOGRAPHY_SET 1 CORNELL

FLOORPLAN

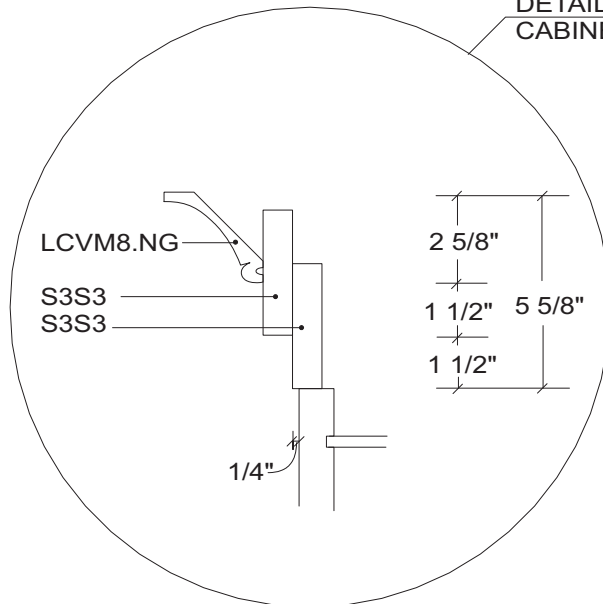
DETAIL A: TOP MOLDING
CABINET FRONT/SIDE W/ DOORS



DETAIL B: BOTTOM MOLDING
CABINET FRONT/ SIDE W/ DOORS



DETAIL A: TOP MOLDING
CABINET SIDE W/ NO DOORS



MOLDING DETAILS

NOT TO SCALE

© 2011
Masco Cabinetry, LLC
All Rights Reserved

KraftMaid
Cabinetry

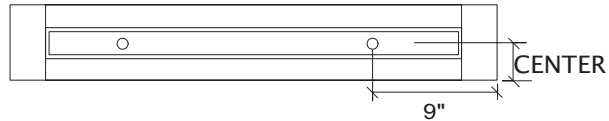
Designed: 9/19/2011
Printed: 9/29/2011

PAGE 15 OF 17

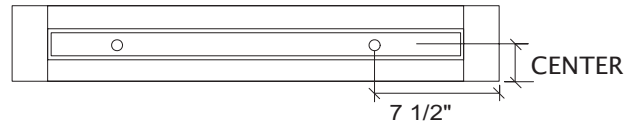
2012 PHOTOGRAPHY_SET 1 CORNELL

MOLDING

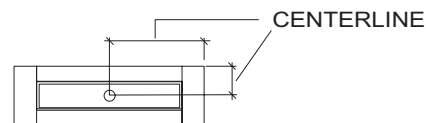
Scale : 0 1/2" = 1'



36" DRAWER

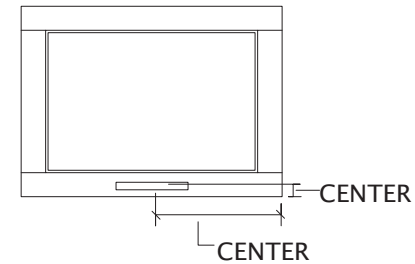


30" DRAWER

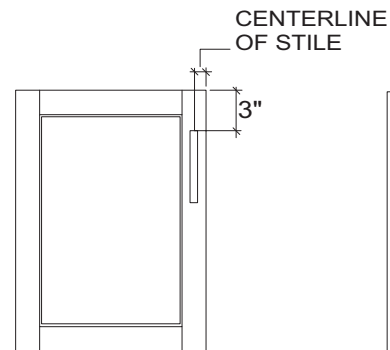


12" - 24" DRAWER

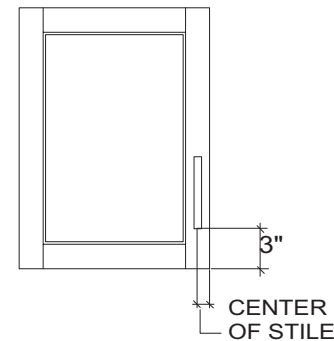
ANTIQUE NICKEL FEDERAL HARDWARE:
(36) #7160.AN {DOORS}
(31) #7159.AN {DRAWERS}



WTHG2418



BASE CABINET



WALL CABINET

HARDWARE DETAILS

© 2011
Masco Cabinetry, LLC
All Rights Reserved

KraftMaid
Cabinetry

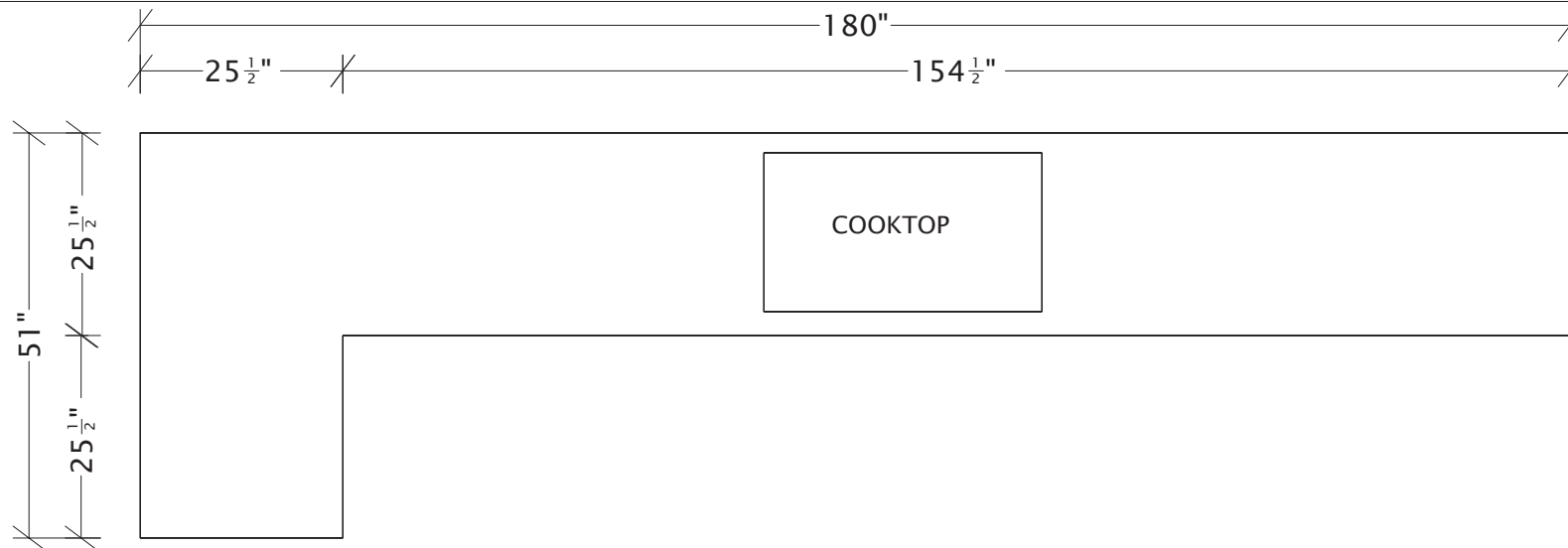
Designed: 9/19/2011
Printed: 10/17/2011

PAGE 16 OF 17

2012 PHOTOGRAPHY_SET 1 CORNELL

HARDWARE

Scale : 0 1/2" = 1'

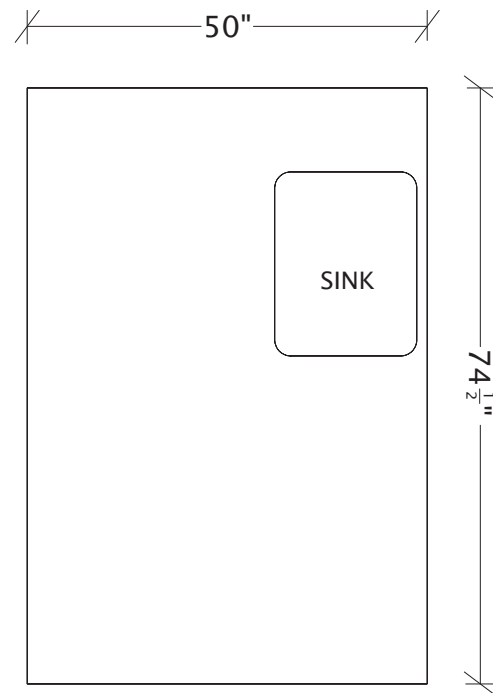


INSTALLATION NOTES:

SINK CUTOUT ON JOBSITE. TEMPLATE PROVIDED BY SINK MANUFACTURER.

THIS DRAWING IS FOR CONCEPT USE ONLY. ALL DIMENSIONS NEED TO BE FIELD VERIFIED FROM THE INSTALLED CABINETRY. IT IS THE RESPONSIBILITY OF THE COUNTERTOP FABRICATOR TO FIELD VERIFY ALL DIMENSIONS.

COOKTOP CUTOUT ON JOBSITE. TEMPLATE PROVIDED BY APPLIANCE MANUFACTURER.



COUNTERTOP DETAILS

© 2011
Masco Cabinetry, LLC
All Rights Reserved

KraftMaid
Cabinetry

Designed: 9/19/2011
Printed: 9/29/2011

PAGE 17 OF 17

2012 PHOTOGRAPHY_SET 1 CORNELL

CTOP

Scale : 0 1/2" = 1'