

## Contemporary Kitchen #2

KRAFTMAID CABINETRY

JUDSON MAPLE  
MAPLE CANVAS  
MAPLE GOLDEN LAGER

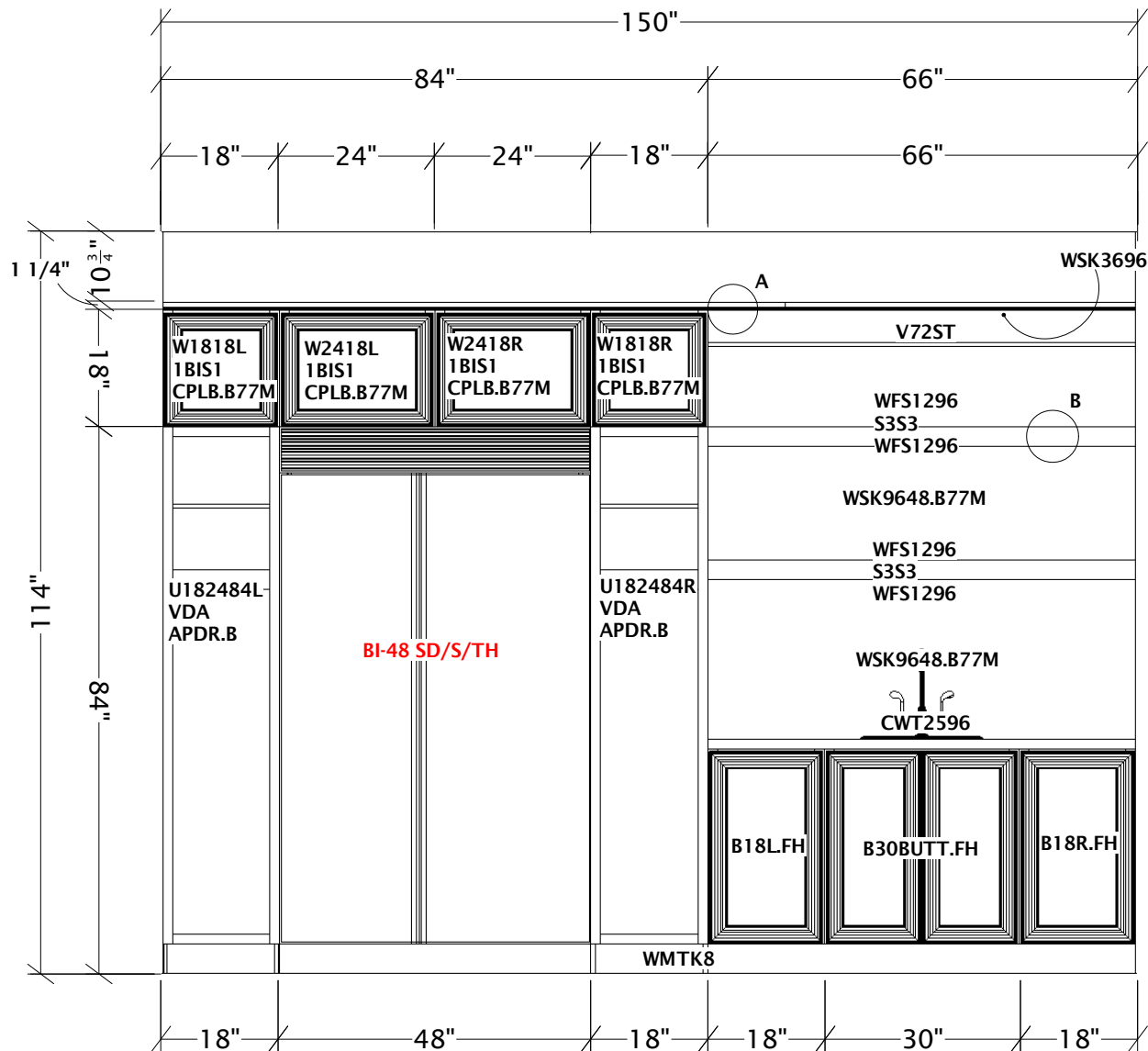
HARDWARE:  
30 - 7133.SN  
5 - 7136.SN

TOP MOLDING:  
6 - SHM8

TOE KICK MOLDING:  
5 - WMTK  
5 - OGP8  
2 - MTK.S

MISCELLANEOUS:  
6 - S3S3  
2 - S3S6  
6 - SM8  
1 - OSC8  
1 - TUKEN  
1 - TUKGL  
1 - TUKCV  
2 - DWTEP96  
3 - WSK3696

## FLOOR PLAN

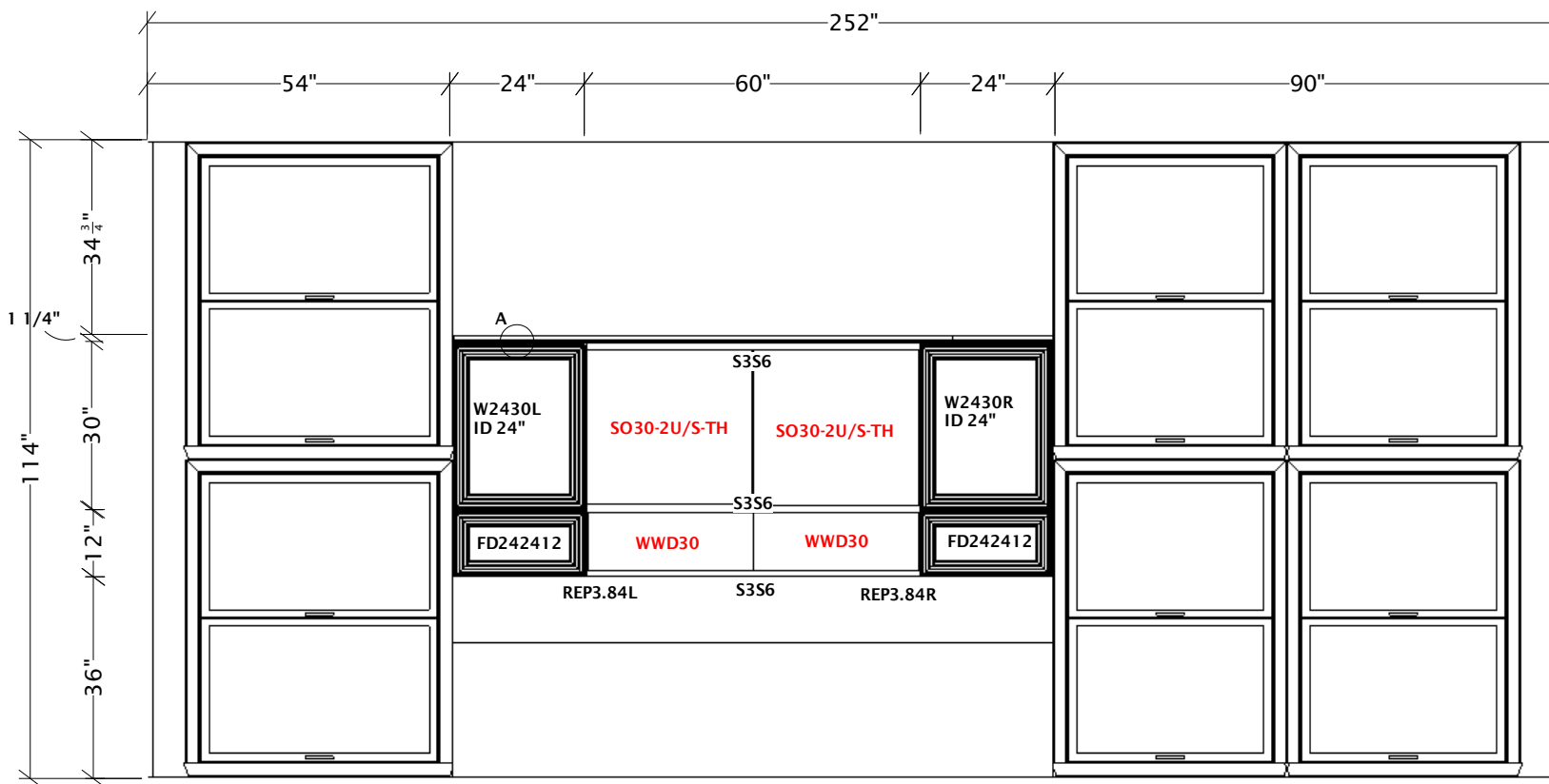


**APDR.B:**  
ATTACH TO EACH U182484 WITH SUPPLIED HINGES.

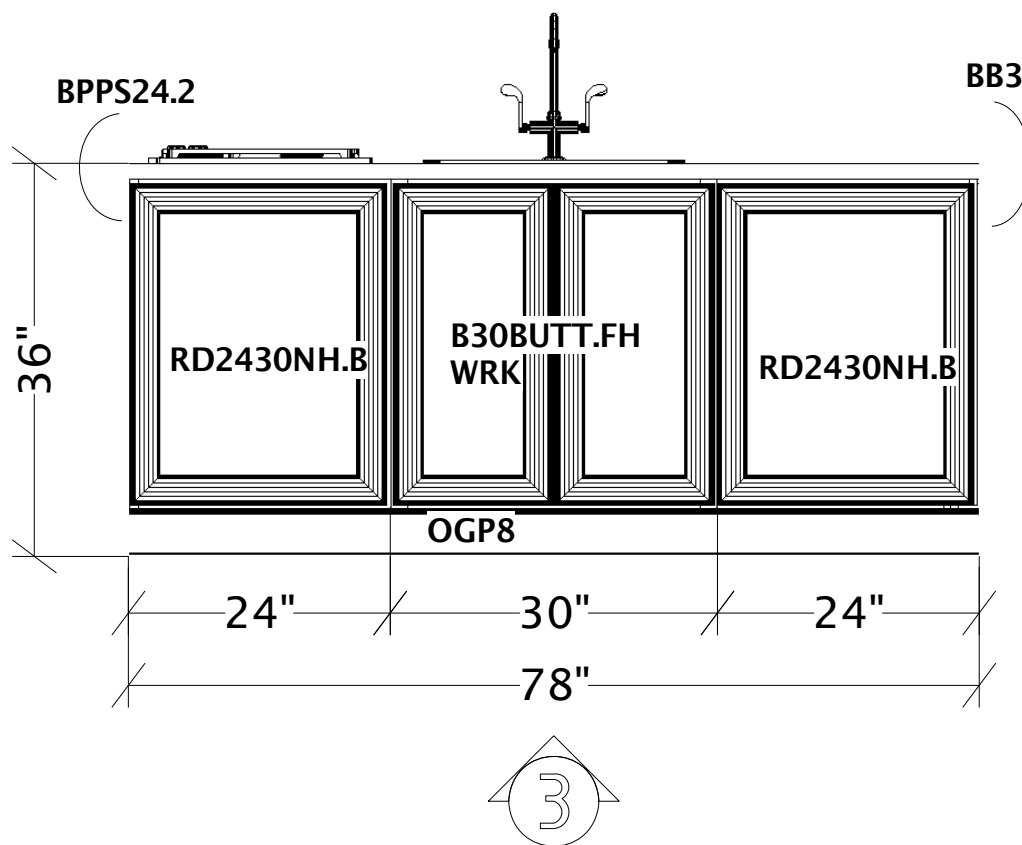
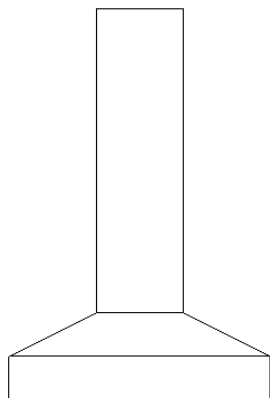
**WFS1296/S3S3:**  
TRIM WFS1296 TO 66" W X 11 3/16" D. INSTALL HORIZONTALLY BETWEEN U182484R AND RIGHT WALL. SANDWICH S3S3 BETWEEN EACH WFS1296 TO CREATE 3" WIDE SHELF. SEE MOLDING DETAIL FOR MORE INFORMATION.

**WSK9648.B77M:**  
TRIM TO 66 WIDE AND APPLY TO BACK WALL. TRIM HEIGHT SO THAT SEAM IS COVERED BY WFS1296/S3S3.

**WSK3696:**  
TRIM TO 66" WIDE BY 27" D. USE TO FINISH OFF TOP OF SOFFIT BEHIND V72ST.



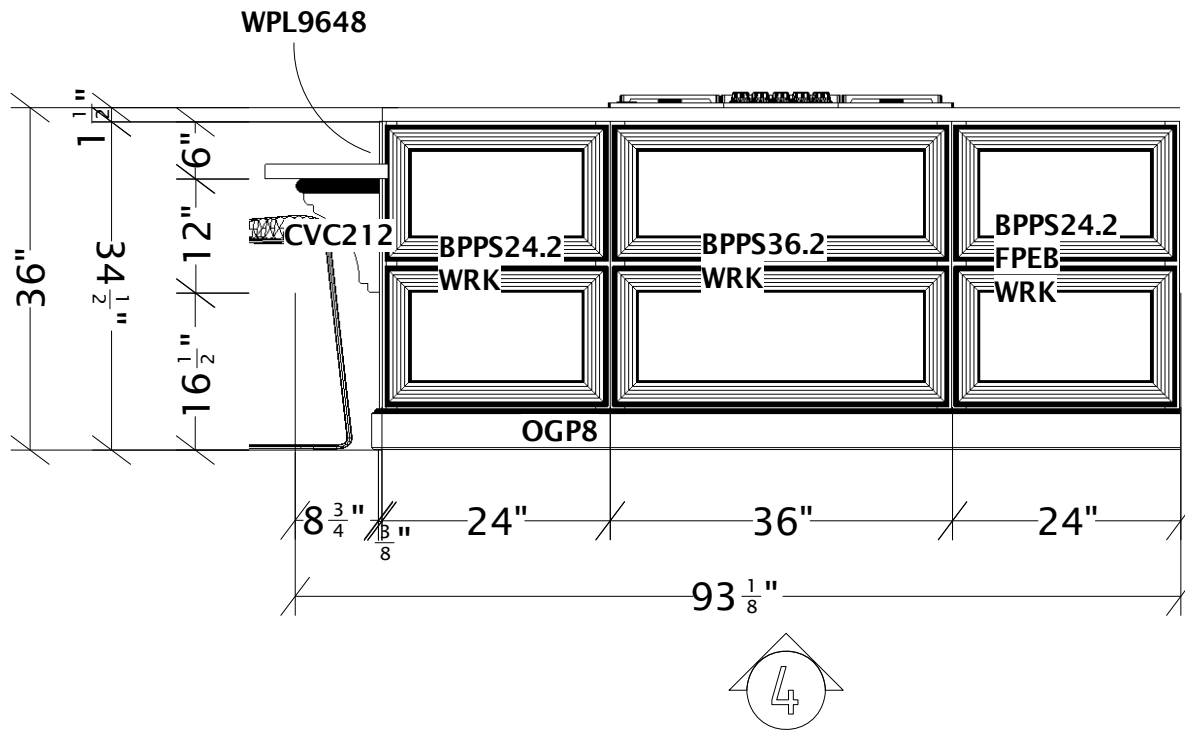
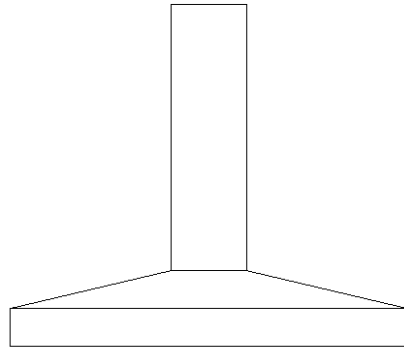
REP3.84L/REP3.84R/S3S6:  
CREATE BOX FOR OVEN/WARMING DRAWER  
BASED ON MANUFACTURER'S DIMENSIONS.



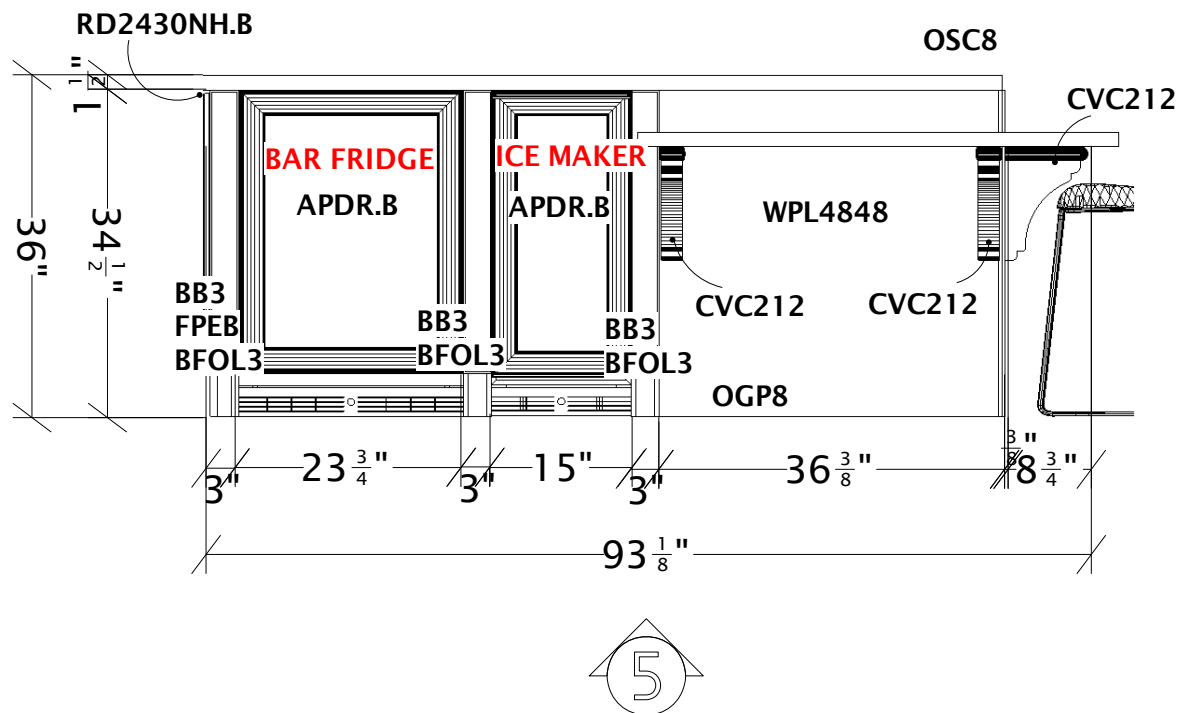
**RD2430NH.B:**  
ATTACH TO EXPOSED SIDE OF BPPS24.2, SECURING  
FROM INSIDE. ALIGN WITH TOP OF CABINET.

**RD2430NH.B:**  
ATTACH TO EXPOSED SIDE OF BB3.  
ALIGN WITH TOP OF CABINET.

**OGP TO SIT FLUSH WITH FACE FRAME OF CABINET.**



OGP8 TO SIT FLUSH WITH FACE FRAME OF CABINETS.

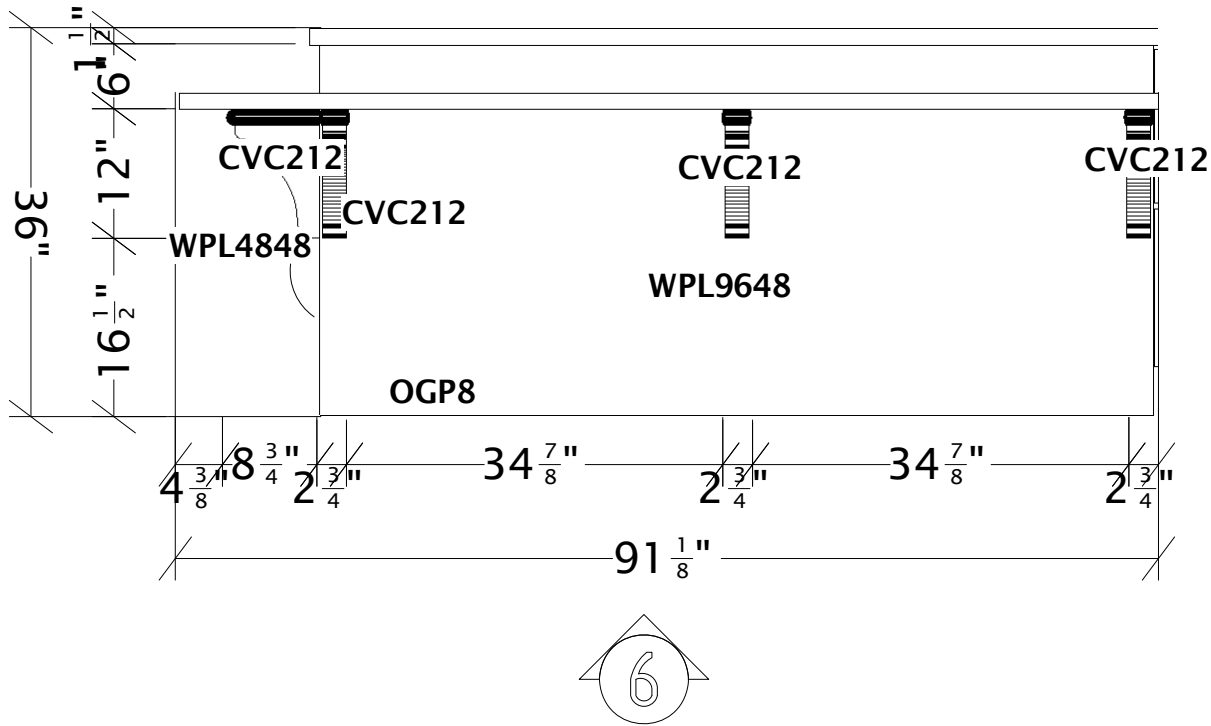


**BB3/BFOL3:**  
ATTACH OVERLAY TO BASE BOX FROM BEHIND.

**WPL4848:**  
TRIM WPL4848 TO  $36 \frac{3}{8}"$  W X  $34 \frac{1}{2}"$  H. PULL SKIN TO SIT FLUSH WITH FACE FRAME OF BB3. PROVIDE EXTRA SUPPORT FOR PANEL FROM BEHIND.

**OGP8:**  
PULL OGP8 FORWARD TO SIT FLUSH WITH FACE FRAME OF BB3.

**MTK8.S:**  
PROVIDED FOR APPLICATION AT TOE KICK BETWEEN APPLIANCES IF CUSTOMER WISHES TO INSTALL.



**WPL4896:**  
**TRIM PANEL TO 78" W X 34 1/2" HIGH.**  
**ATTACH TO SIDE OF BPPS24.2. VERTICAL GRAIN.**

**OGP8:**  
**RUN ALONG BOTTOM OF WPL4896**

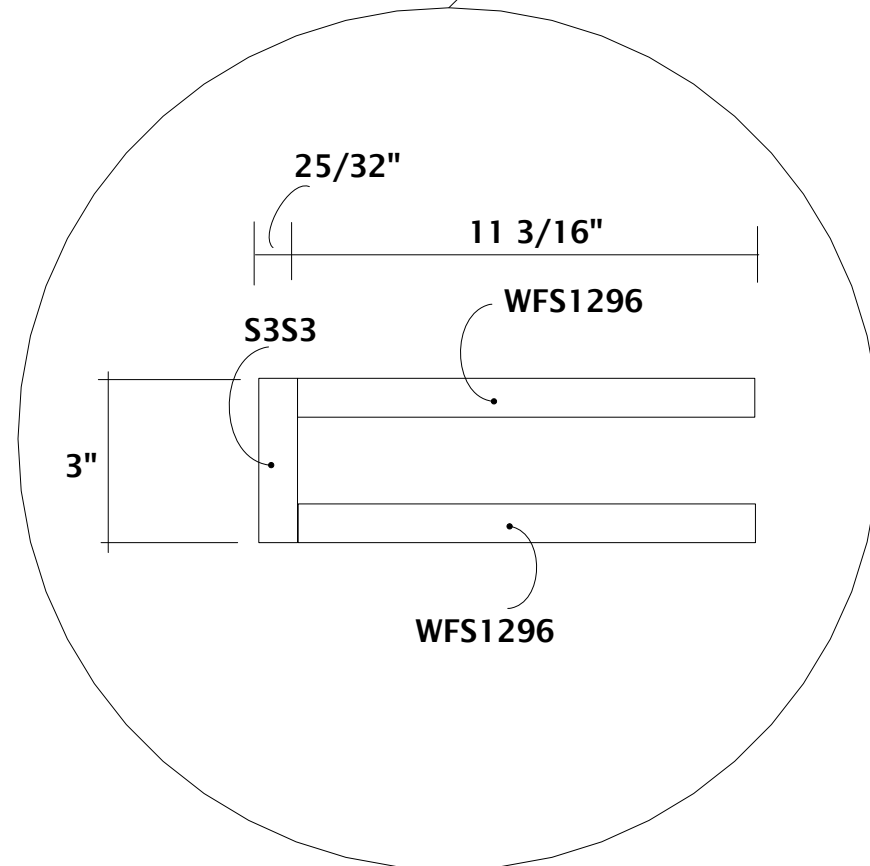
Note: This drawing is an artistic interpretation of the general appearance of the design. It is not meant to be an exact rendition.



Designed :12/10/2012  
 Printed: 12/22/2012

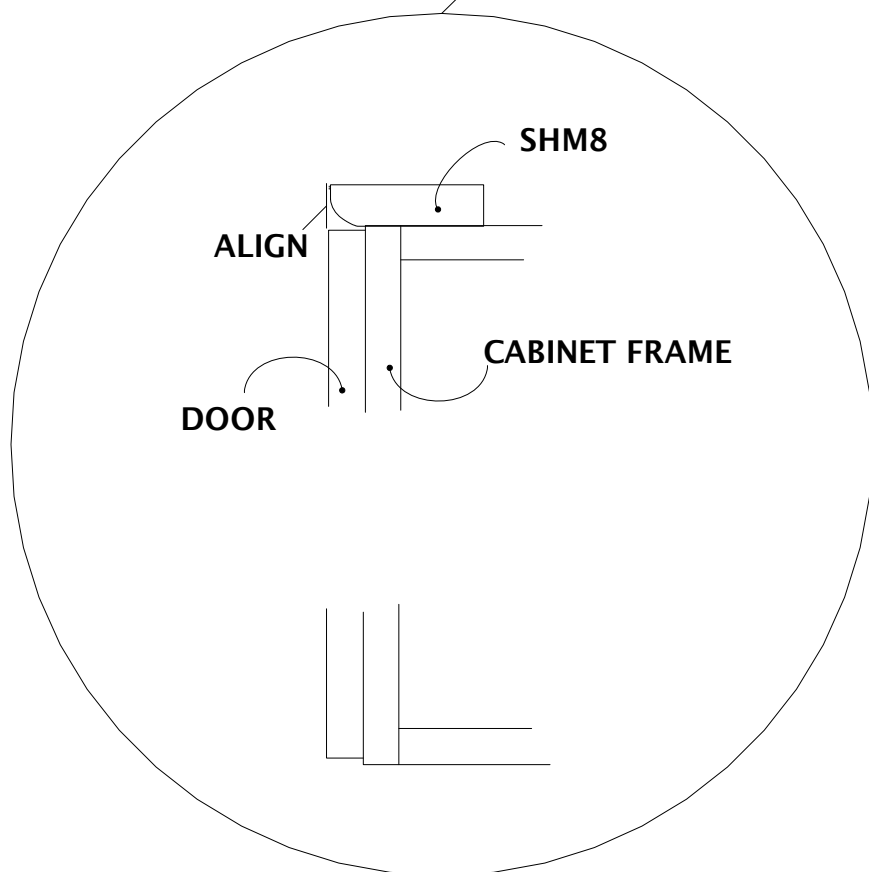
## MOLDING DETAIL B

### OPEN SHELVING



## TOP MOLDING DETAIL A

### SIDE NO DOORS

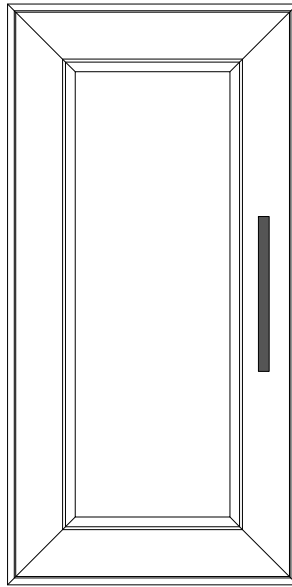


## MOLDING DETAILS

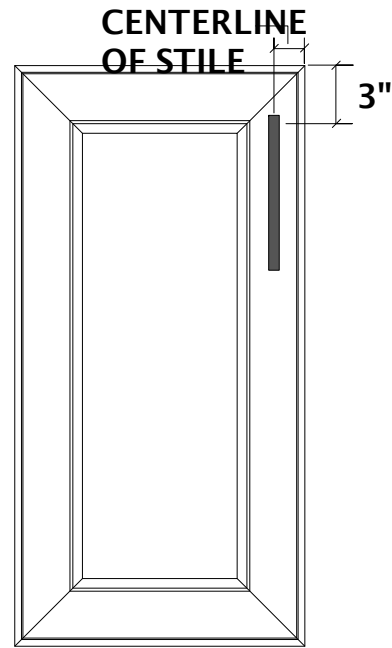
NOT TO SCALE



# JUDSON

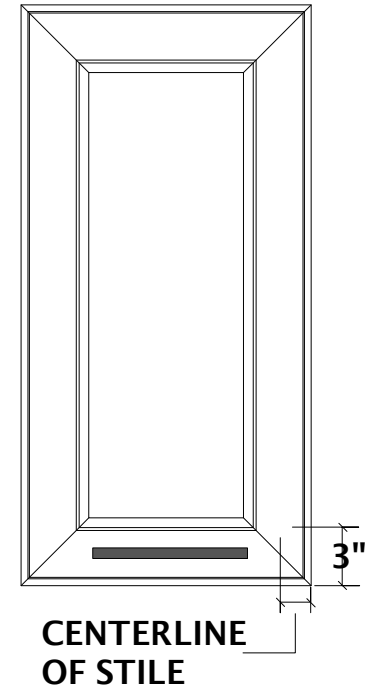


U182484L&R (7136.SN)

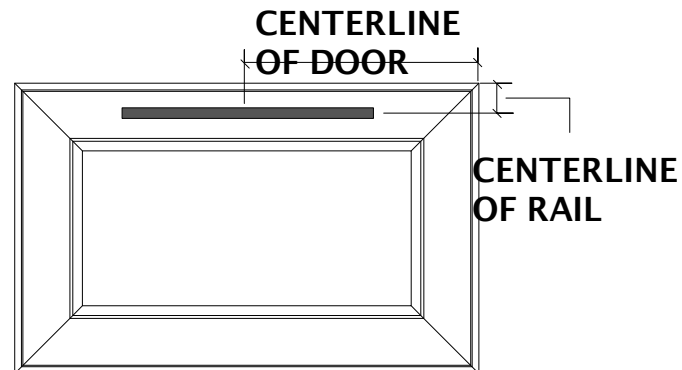


BASE DOORS (7133.SN)

## WALL DOORS (7133.SN)



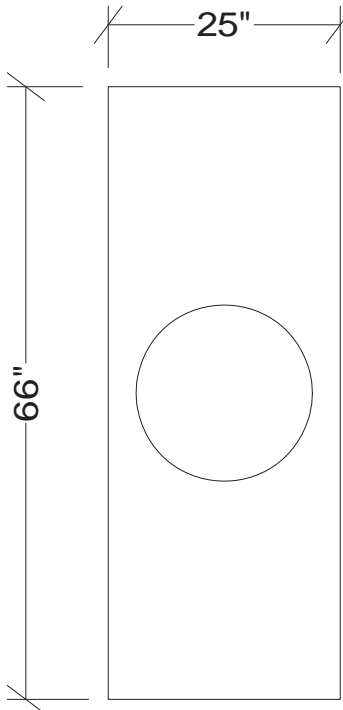
CENTERLINE OF STILE



DRAWERS (7133.SN)

## HARDWARE DETAILS

NOT TO SCALE

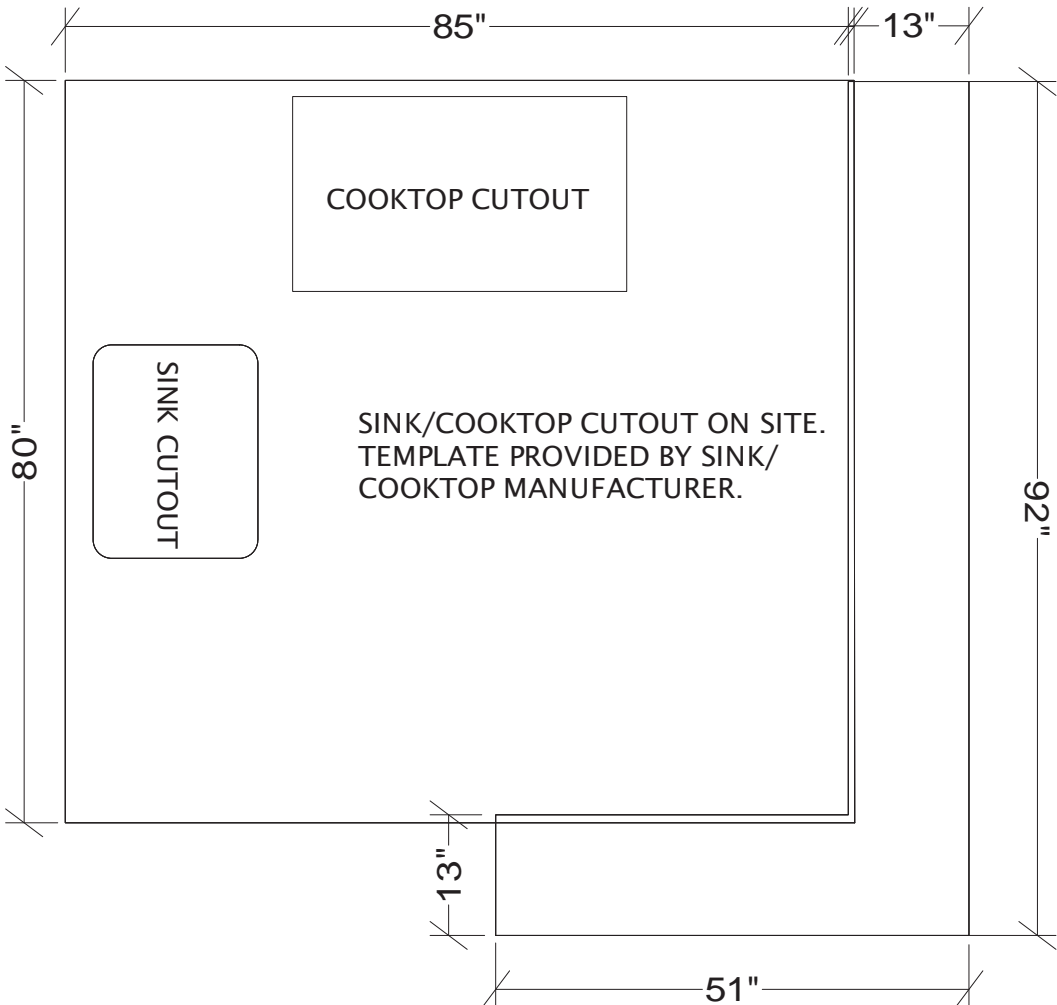


WOOD TOP PROVIDED  
BY KRAFTMAID.

SINK CUTOUT ON SITE. TEMPLATE  
PROVIDED BY SINK MANUFACTURER.

**JUDSON KITCHEN**

THIS DRAWING IS FOR ESTIMATING PURPOSES ONLY.  
ON-SITE TEMPLATE IS RECOMMENDED.



COOKTOP CUTOUT

SINK CUTOUT

SINK/COOKTOP CUTOUT ON SITE.  
TEMPLATE PROVIDED BY SINK/  
COOKTOP MANUFACTURER.

