

# FLOOR PLAN

2010 PHOTOGRAPHY - HERITAGE

HAWTHORNE MAPLE / ONYX

\*HAWTHORNE MAPLE  
CARDINAL W/ ONYX GLAZE

HARDWARE: TBD  
(30) DOORS  
(8) DRAWERS

TOP MOLDING:  
(4) STR8  
(4) CCM8.NG

LIGHT RAIL:  
(2) LCVLR8

TOE KICK:  
(5) WMTK8 ONYX FOR ALL

LIGHTING:  
(3) LVLK.2.B  
(2) EXTN  
(2) FLLSWM.11  
(1) FLLSWM.17  
(1) FLC.1  
(2) FLC.4  
(2) FLLSHWB.AL

MISCELLANEOUS:  
(2) VGSK18  
(2) SM8  
(2) \* SM8  
(1) TUKON  
(1) \* TUKCARDINAL  
(3) BOX.FADBK

© 2010  
MASCO Retail Cabinet Group  
All Rights Reserved

KraftMaid  
Cabinetry

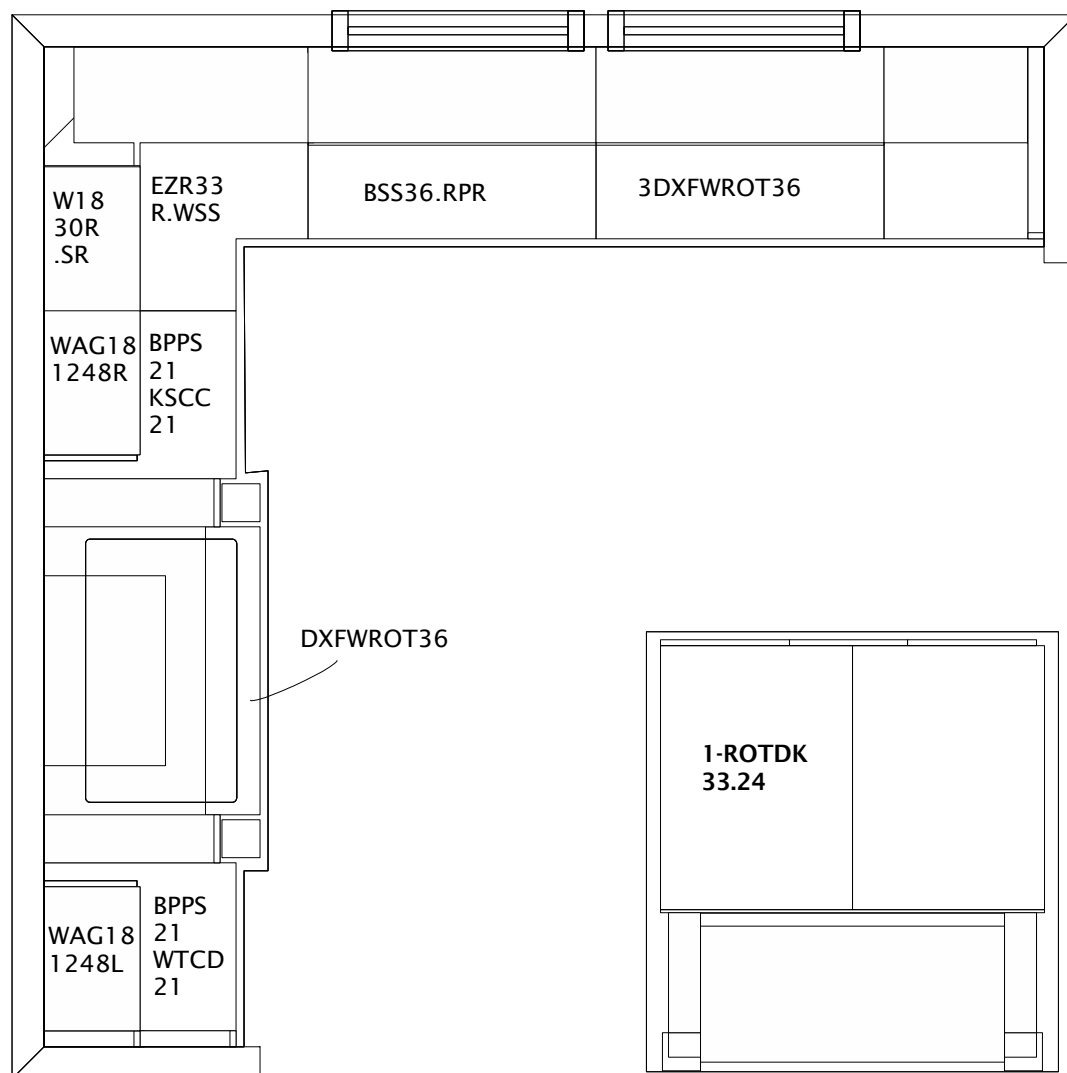
Designed: 2/8/2010  
Printed: 2/9/2010

PAGE 1 OF 17

2010\_HERITAGE\_HA\ FLOOR PLAN

Drawing #: 1

Scale : 0 1/2" = 1'



#### HARMONY INSTALLATION

1 - ROTDK33.24 ROLLOUT TRAY DIVIDER KIT. REMOVE ONE OF THE WOOD SHELVES THAT COMES WITH CABINET. INSTALL THE TRAY DIVIDER KIT AT FLOOR OF CABINET. POSITION THE REMAINING WOOD SHELF ABOVE THE TRAY KIT.

## HARMONY DETAILS

© 2010  
MASCO Retail Cabinet Group  
All Rights Reserved

**KraftMaid**  
Cabinetry

Designed: 2/8/2010  
Printed: 2/9/2010

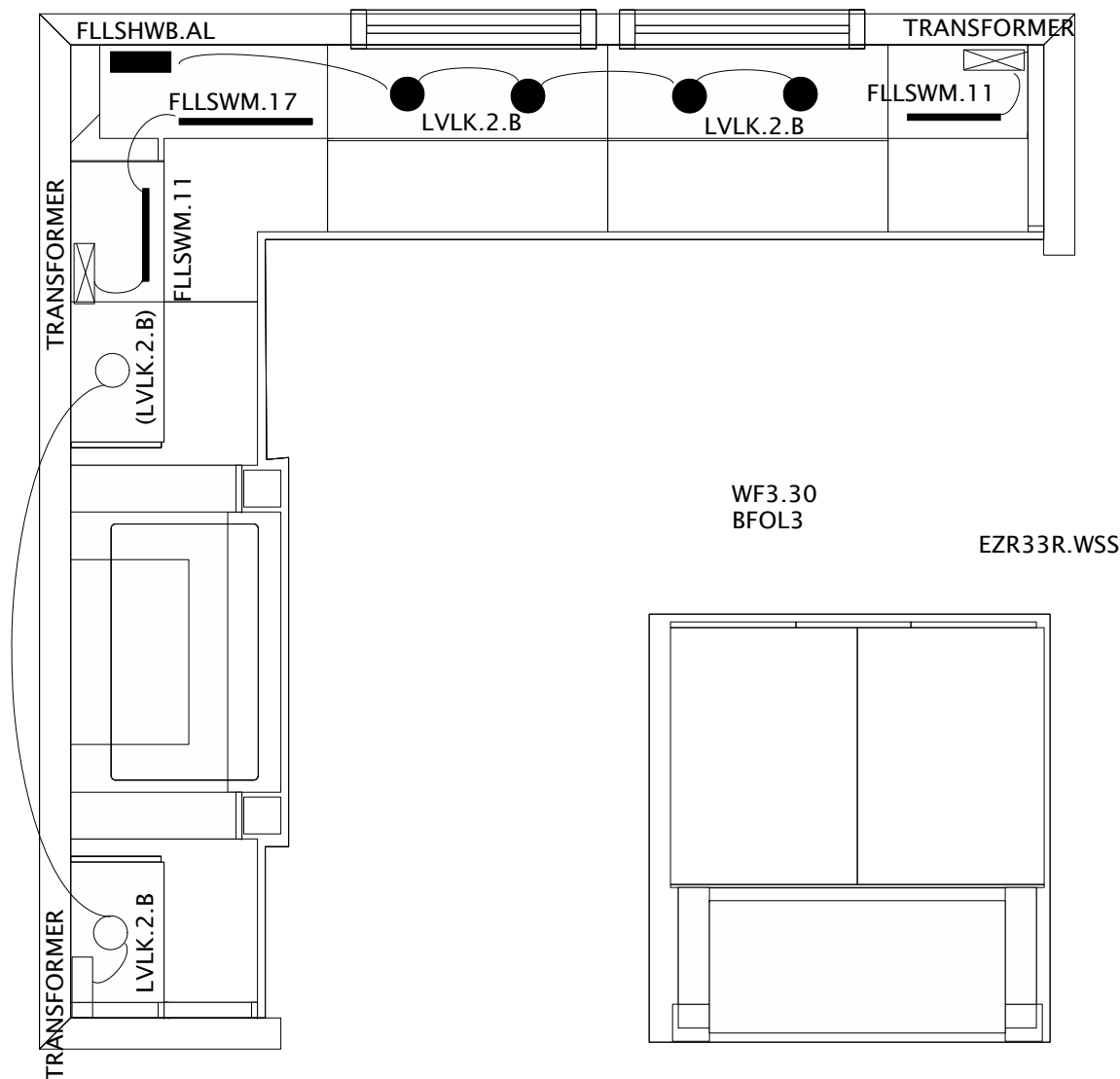
PAGE 2 OF 17

2010\_HERITAGE\_HA\

HARMONY

Drawing #: 1

Scale : 0 1/2" = 1'



## LIGHTING LEGEND

- (1) LVLK.2.B:  
CENTER ONE FIXTURE INSIDE EACH  
GLASS DOOR CABINETS. SURFACE  
MOUNT TO CEILING.
- TRANSFORMER FOR THE ABOVE LIGHTS.  
LINK WITH FIRST LIGHT USING EXTN  
EXTENTION CORD PROVIDED. IF CORD IS  
NOT LONG ENOUGH - HARDWARE. POSITION  
TRANSFORMER ABOVE THE W1818L, FAR  
LEFT CORNER.
- (2) LVLK.2.B  
ATTACH FIXTURES TO UNDERSIDE OF WFS1296.  
SURFACE MOUNT. CENTER EACH FIXTURE ON  
EACH W3618 DOOR.
- TRANSFORMER FOR THE ABOVE LIGHTS:  
LINK WITH FIRST LIGHT USING EXTN  
EXTENTION CORD PROVIDED. POSITION  
TRANSFORMER ABOVE THE WBCST3348,  
AT BACK LEFT CORNER.
- FLLSWM'S:  
SNAP EACH FIXTURE INTO BACK GROOVE OF  
LIGHT RAIL. USE FLC.4 CORDS TO CONNECT  
LIGHTING TO TRANSFORMER. USE FLC.1  
CORD TO CONNECT LIGHING IN CORNER.
- ⊠ (2) FLLSHWB.AL:  
TRANSFORMERS FOR THE ABOVE LIGHT STRIPS.  
POSITION ONE ABOVE THE WST1848R-BACK  
RIGHT CORNER. POSITION THE OTHER  
ABOVE THE W3618-BACK LEFT CORNER.

REFER TO MANUFACTURER'S INSTRUCTIONS  
FOR ADDITIONAL INFORMATION.

# LIGHTING DETAILS

© 2010  
MASCO Retail Cabinet Group  
All Rights Reserved

**KraftMaid**  
Cabinetry

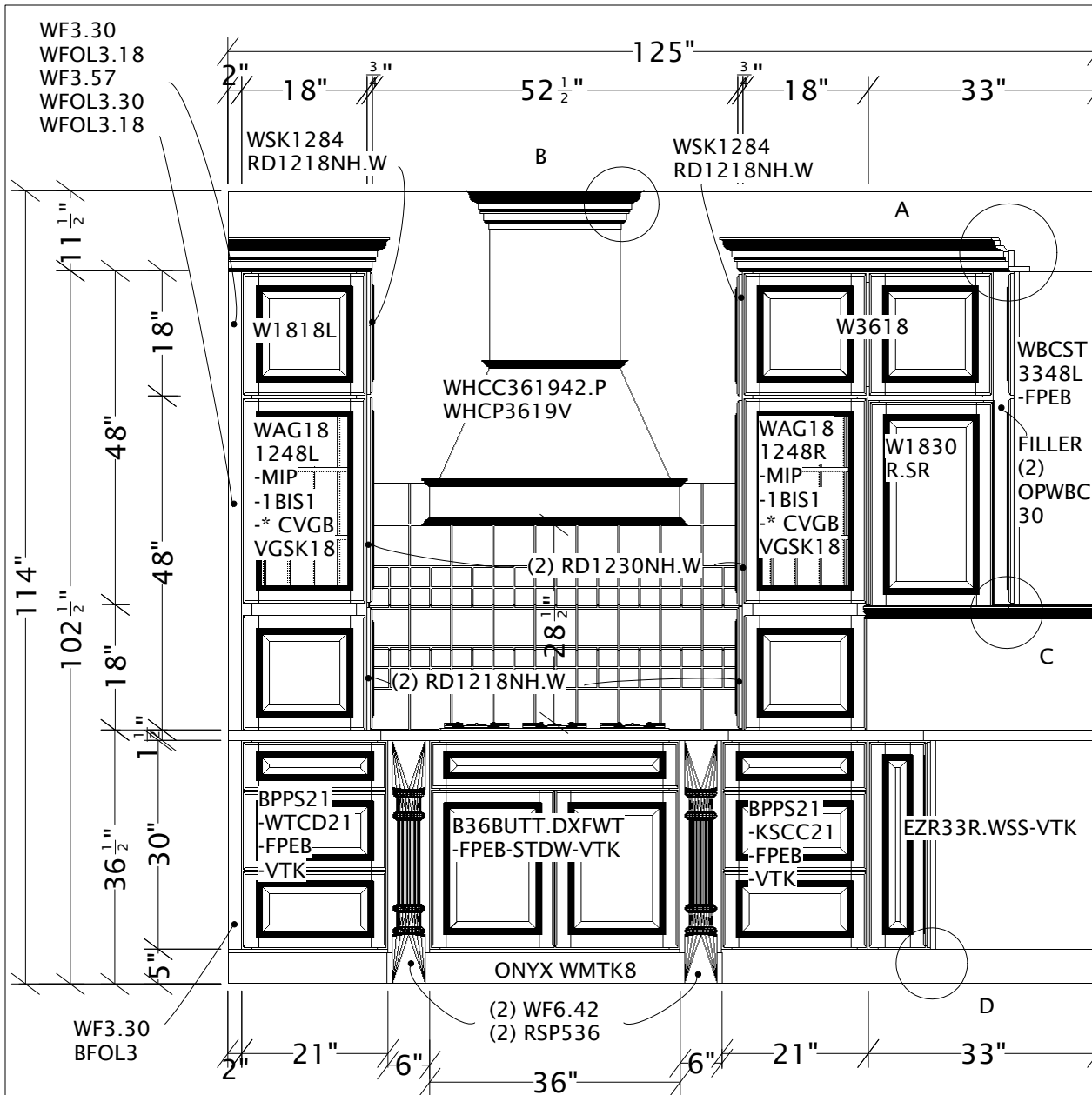
Designed: 2/8/2010  
Printed: 2/9/2010

PAGE 3 OF 17

2010\_HERITAGE\_HA\ LIGHTING

Drawing #: 1

Scale : 0 1/2" = 1'



1 ELEVATION

#### INSTALLATION INSTRUCTIONS:

WF3.30/WFOL3.18: CUT FILLER TO FIT (APPROX. 2"W X 18"H). CUT OVERLAY 3/16" LESS IN WIDTH THAN FILLER, ATTACH TO FILLER FACE FROM BEHIND AND INSTALL ALL TO LEFT FRAME OF W1818L.

WF3.57/WFOL3.30/WFOL3.18: CUT FILLER TO FIT (APPROX. 2"W X 48"H). CUT OVERLAYS 3/16" LESS IN WIDTH THAN FILLER, ATTACH TO FILLER FACE WITH WFOL3.30 LINING UP WITH UPPER DOORS AND WFOL3.18 BELOW. SECURE FROM BEHIND. INSTALL ALL TO LEFT FRAME OF WAG181248L.

(2) WSK1284: CUT TO 66" HIGH AND INSTALL AT SIDES AS SHOWN.

(4) RD1218NH.W/(2)RD1230NH.W: INSTALL TO SKINS IN THE FOLLOWING ORDER. ONE SET OF RD1218NH.W AT TOP, ALIGNING W/ W1818 CABINET DOORS. RD1230NH.W SET IN MIDDLE, ALIGNING W/ UPPER DOORS OF WAG'S. FINAL SET OF RD1218NH.W AT BOTTOM, ALIGNING WITH LOWER DOORS OF WAG'S. SECURE DOORS FROM INSIDE CABINETS.

(2) VGSK18: INSTALL SHELF KIT INSIDE GLASS DOOR CABINETS. USE SHELF POSTS PROVIDED. DISCARD WOOD SHELVES THAT COME WITH CABINETS.

FILLER/(2)OPWBC30: CUT FILLER THAT COMES WITH WALL BLIND TO FIT. APPROX. 3"W X 48"H. CUT ONE OPWBC30 TO 17 5/8" HIGH. CUT INTO NEEDED WIDTHS TO COVER FILLER AND PULLED AREA OF WALL BLIND ON ELEVATION 2. MAINTAIN 3/16" MARGINS AND MITER AT CORNER. ATTACH AT TOP PART OF FILLER, ALIGNING W/ W3618 DOORS. CUT THE OTHER OPWBC30 INTO NEEDED WIDTHS TO COVER FILLER AND PULLED AREA OF WALL BLIND ON ELEVATION 2. MAINTAIN 3/16" MARGINS AND MITER AT CORNER. ATTACH TO LOWER PART OF FILLER, ALIGNING W/ W1830R.SR DOOR.

WF3.30/BFOL3: CUT FILLER TO FIT (+/- 2" WIDE). CUT OVERLAY TO 3/16" LESS IN WIDTH THAN FILLER AND ATTACH TO FILLER FACE FROM BEHIND. INSTALL ALL TO LEFT FRAME OF LEFT BPPS21.

PULL CASE OF THE B36BUTT.DXFWT CABINET TO 27" DEEP.

(2) WF6.42: CUT TO 35" HIGH AND INSTALL EACH AT 23" DEEP, AT EACH SIDE OF THE PULLED B36BUTT CABINET.

(2) RSP536: CUT TO 35" HIGH, CUTTING EQUALLY FROM BOTH ENDS. INSTALL IN FRONT OF THE WF6.42'S SO FRONT OF LEGS ARE FLUSH WITH CABINET DOORS.

DOOR BUFFER NOTE: INSTALL (1) ONE DOOR BUFFER PER DOOR. INSTALL ON HINGE SIDE, IN UPPER AREA OF DOOR

© 2010  
MASCO Retail Cabinet Group  
All Rights Reserved

KraftMaid  
Cabinetry

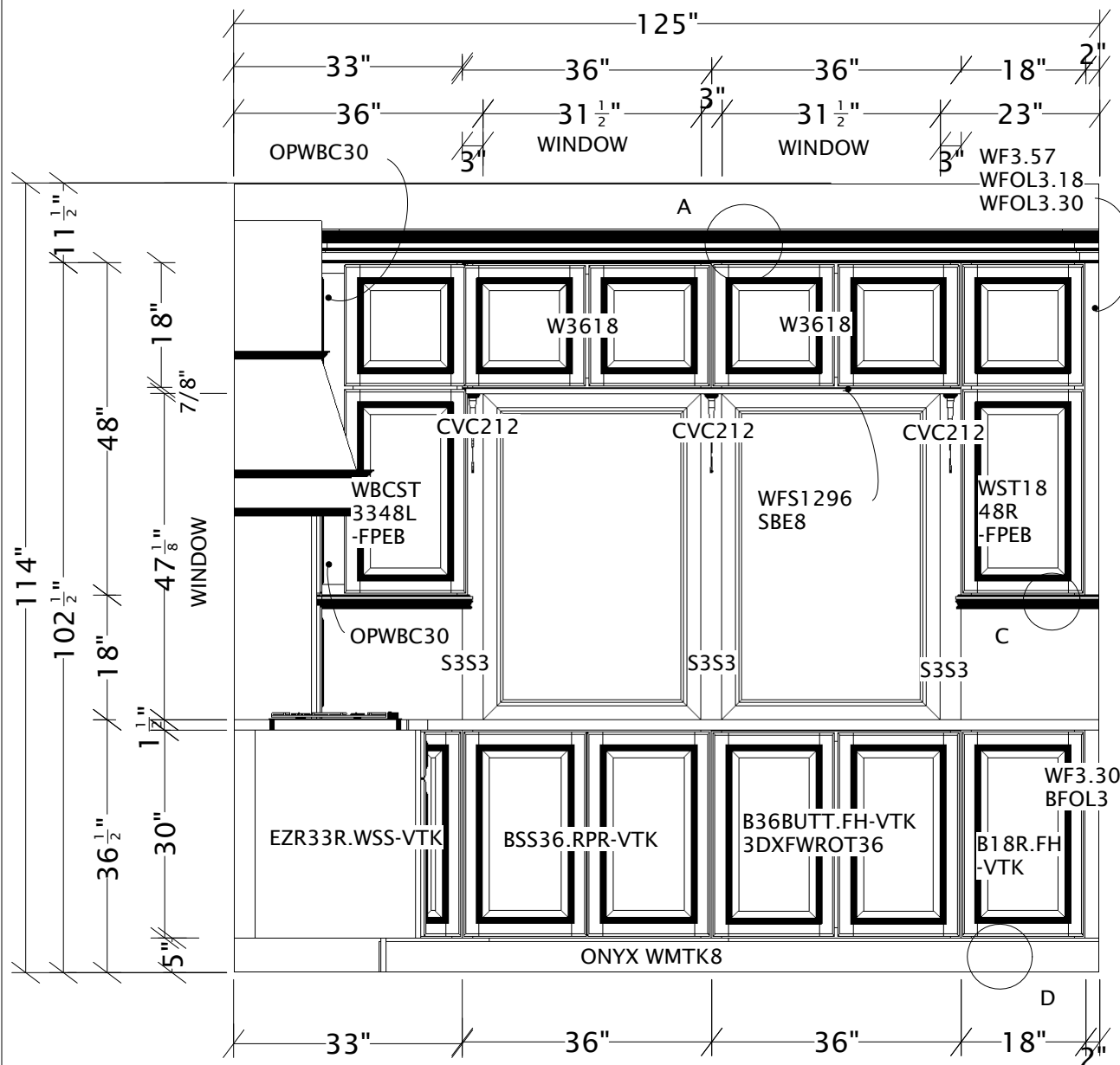
Designed: 2/8/2010  
Printed: 2/9/2010

PAGE 4 OF 17

2010\_HERITAGE\_HA\ EI 1

Drawing #: 1

Scale : 0 1/2" = 1'



2 ELEVATION

#### INSTALLATION INSTRUCTIONS:

WF3.57/WFOL3.18/WFOL3.30: CUT FILLER TO FIT. (+/- 2"W X 48"H). CUT EACH OVERLAY 3/16" LESS IN WIDTH THAN FILLER. INSTALL THE WFOL3.18 AT TOP FACE OF FILLER, SECURING FROM BEHIND. ALIGN WITH TOP DOOR OF CABINET. INSTALL THE WFOL3.30 BELOW, SECURING FROM BEHIND AND ALIGNING WITH BOTTOM DOOR OF CABINET.

WFS1296/SBE8: CUT SHELF TO 11 1/2" DEEP X 72" LONG. APPLY/CENTER SBE8 MOLDING TO FRONT EDGE AND INSTALL ALL UNDER THE W3618'S.

(3) S3S3: CUT EACH TO FIT HEIGHT FROM UNDERSIDE OF WFS1296 TO COUNTERTOP. (+/- 47 1/8" HIGH).

(3) CVC212: CENTER ON EACH S3S3, BUTTING TOPS TO UNDERSIDE OF WFS1296 SHELF. USE SMALL BRADS TO ATTACH.

WF3.30/BFOL3: CUT FILLER TO FIT (+/- 2" WIDE). CUT OVERLAY TO 3/16" LESS IN WIDTH THAN FILLER AND ATTACH TO FILLER FACE. INSTALL ALL TO RIGHT FRAME OF B18R.FH.

DOOR BUFFER NOTE: INSTALL (1) ONE DOOR BUFFER PER DOOR. INSTALL ON HINGE SIDE, IN UPPER AREA OF DOOR

© 2010  
MASCO Retail Cabinet Group  
All Rights Reserved

Designed: 2/8/2010  
Printed: 2/9/2010

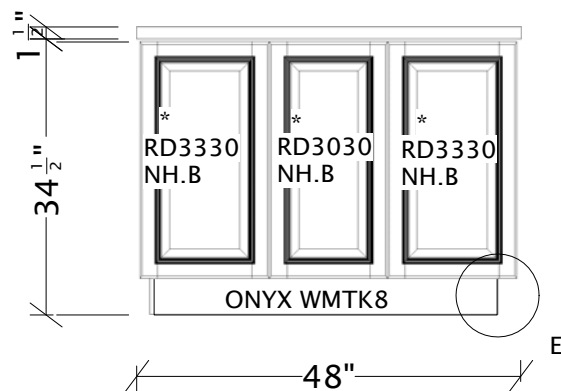
KraftMaid  
Cabinetry

PAGE 5 OF 17

2010\_HERITAGE\_HA\ EI 2

Drawing #: 1

Scale : 0 1/2" = 1'



#### INSTALLATION INSTRUCTIONS:

(2) \* RD3330NH.B / \* RD3030NH.B:  
APPLY TO CABINET SIDES AS SHOWN,  
SPACING EQUALLY ON 48" WIDTH.  
ALIGN WITH DRAWER/DOOR OF  
B33'S. SECURE FROM INSIDE  
CABINETS. CENTER DOOR WILL  
HIDE SEAM OF CABINETS.

DOOR BUFFER NOTE: INSTALL (1) ONE  
DOOR BUFFER PER DOOR. INSTALL ON  
HINGE SIDE, IN UPPER AREA OF DOOR

ISLAND CABINETS IN MAPLE  
CARDINAL W/ ONYX GLAZE

© 2010  
MASCO Retail Cabinet Group  
All Rights Reserved

**KraftMaid**  
Cabinetry

Designed: 2/8/2010  
Printed: 2/9/2010

PAGE 6 OF 17

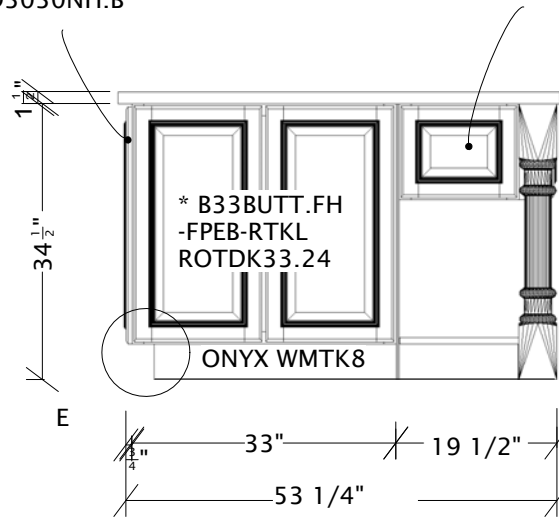
2010\_HERITAGE\_HA\ EI 3

Drawing #: 1

Scale : 0 1/2" = 1'

(2) \* RD3330NH.B  
 \* RD3030NH.B

\* IECDR5020VG.RSP



#### INSTALLATION INSTRUCTIONS:

DOOR BUFFER NOTE: INSTALL (1) ONE DOOR BUFFER PER DOOR. INSTALL ON HINGE SIDE, IN UPPER AREA OF DOOR

ISLAND CABINETS IN MAPLE CARDINAL W/ ONYX GLAZE.



© 2010  
 MASCO Retail Cabinet Group  
 All Rights Reserved

**KraftMaid**  
 Cabinetry

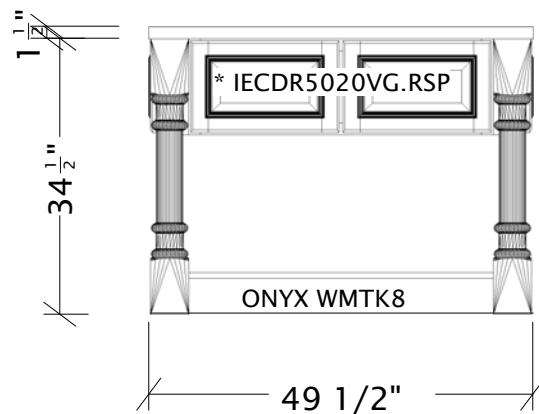
Designed: 2/8/2010  
 Printed: 2/9/2010

PAGE 7 OF 17

2010\_HERITAGE\_HA\ E14

Drawing #: 1

Scale : 0 1/2" = 1'



#### INSTALLATION INSTRUCTIONS:

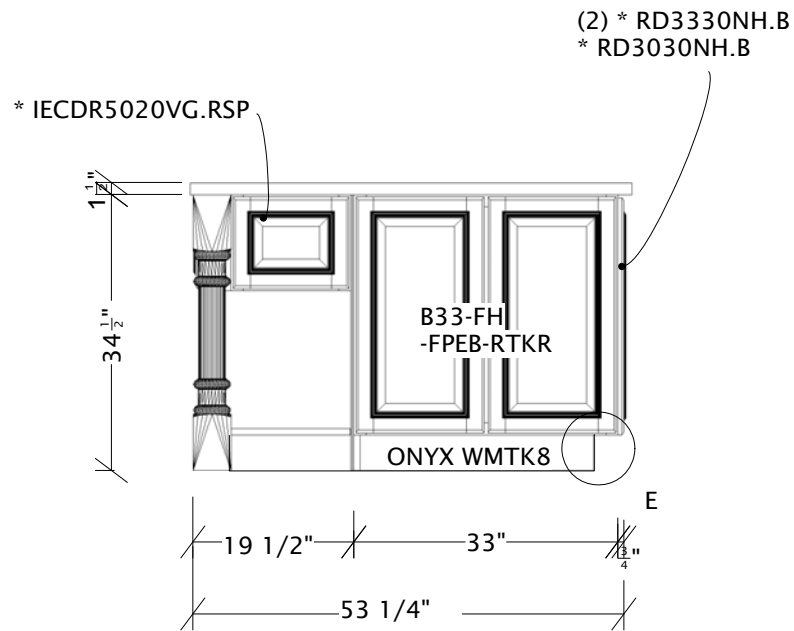
DOOR BUFFER NOTE: INSTALL (1) ONE DOOR BUFFER PER DOOR. INSTALL ON HINGE SIDE, IN UPPER AREA OF DOOR



ISLAND CABINETS IN MAPLE CARDINAL W/ ONYX GLAZE.

© 2010 MASCO Retail Cabinet Group All Rights Reserved		Designed: 2/8/2010 Printed: 2/9/2010
		PAGE 8 OF 17
2010_HERITAGE_HA\ EI 5	Drawing #: 1	Scale : 0 1/2" = 1'





# INSTALLATION INSTRUCTIONS:

DOOR BUFFER NOTE: INSTALL (1) ONE DOOR BUFFER PER DOOR. INSTALL ON HINGE SIDE, IN UPPER AREA OF DOOR

ISLAND CABINETS IN MAPLE CARDINAL W/ ONYX GLAZE.



© 2010 MASCO Retail Cabinet Group All Rights Reserved		Designed: 2/8/2010 Printed: 2/9/2010
		PAGE 9 OF 17
2010_HERITAGE_HA\	E16	Drawing #: 1
		Scale : 0 1/2" = 1'





© 2010  
MASCO Retail Cabinet Group  
All Rights Reserved

**KraftMaid**  
Cabinetry

Designed: 2/8/2010  
Printed: 2/9/2010

PAGE 11 OF 17



© 2010  
MASCO Retail Cabinet Group  
All Rights Reserved

**KraftMaid**  
Cabinetry

Designed: 2/8/2010  
Printed: 2/9/2010

PAGE 12 OF 17



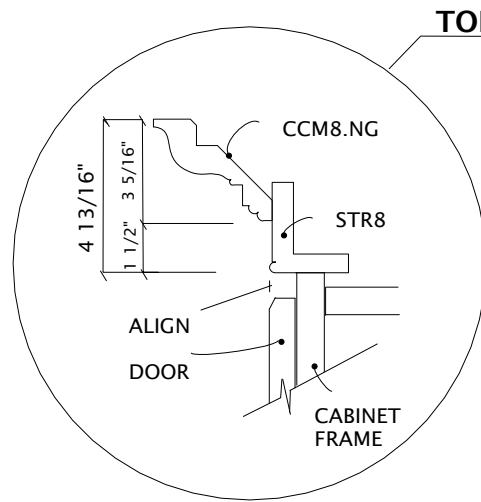
© 2010  
 MASCO Retail Cabinet Group  
 All Rights Reserved

**KraftMaid**  
 Cabinetry

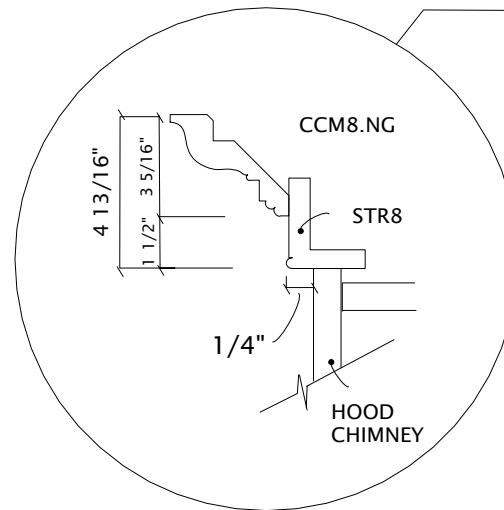
Designed: 2/8/2010  
 Printed: 2/9/2010

PAGE 13 OF 17

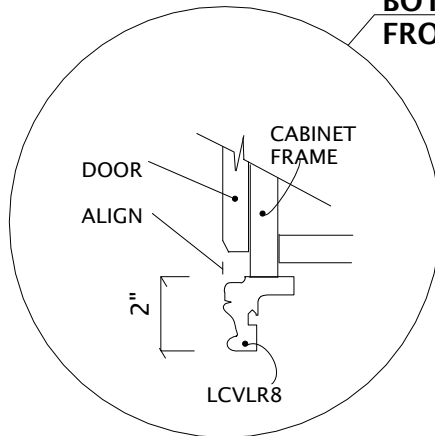




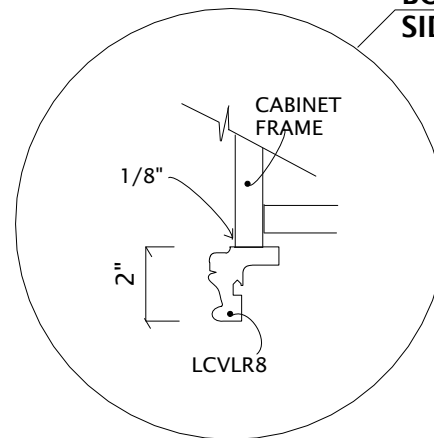
**TOP MOLDING A**



**TOP MOLDING B**



**BOTTOM MOLDING C  
FRONT**



**BOTTOM MOLDING C  
SIDE**

## MOLDING DETAIL

NOT TO SCALE

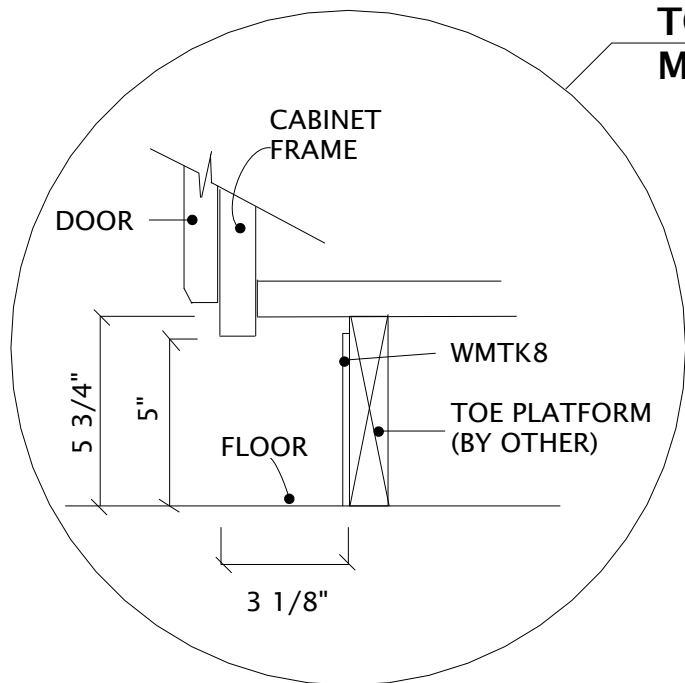
© 2010  
MASCO Retail Cabinet Group  
All Rights Reserved

**KraftMaid**  
Cabinetry

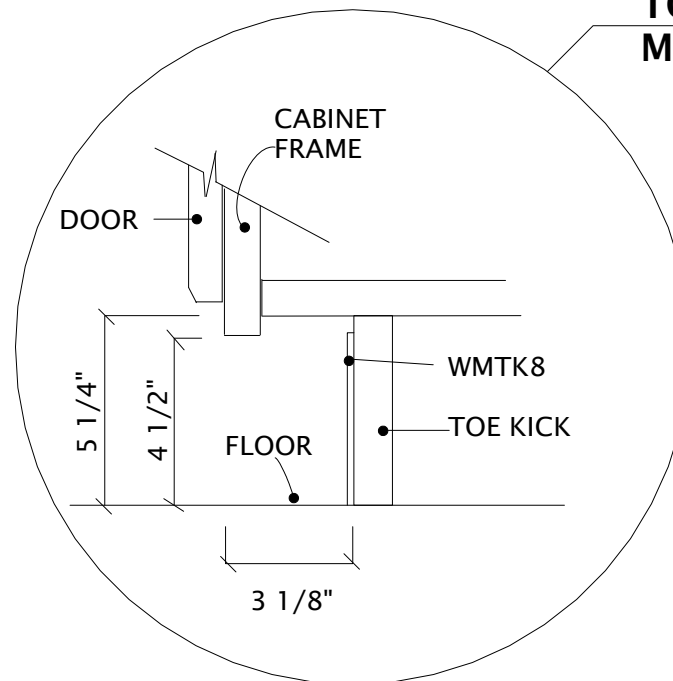
Designed: 2/8/2010  
Printed: 2/9/2010

PAGE 15 OF 17

**TOE BASE  
MOLDING D**



**TOE BASE  
MOLDING E**



# MOLDING DETAIL

NOT TO SCALE

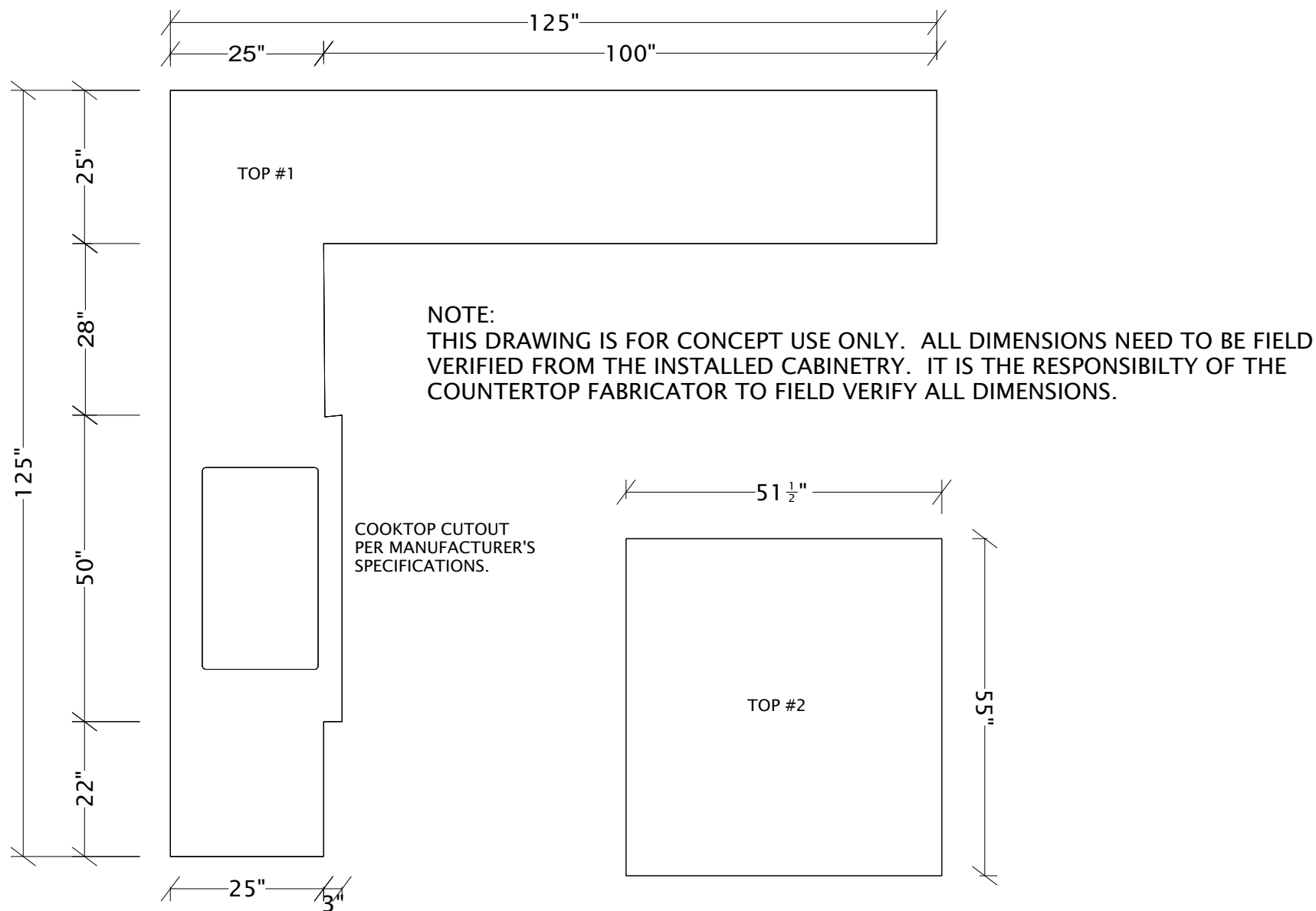
© 2010  
MASCO Retail Cabinet Group  
All Rights Reserved

Designed: 2/8/2010  
Printed: 2/9/2010

**KraftMaid**  
Cabinetry

PAGE 16 OF 17





# COUNTERTOP DETAILS

© 2010 MASCO Retail Cabinet Group All Rights Reserved		<b>KraftMaid</b> Cabinetry	Designed: 2/8/2010 Printed: 2/9/2010
			PAGE 17 OF 17
2010_HERITAGE_HA\	COUNTERTOP	Drawing #: 1	Scale : 0 1/2" = 1'