

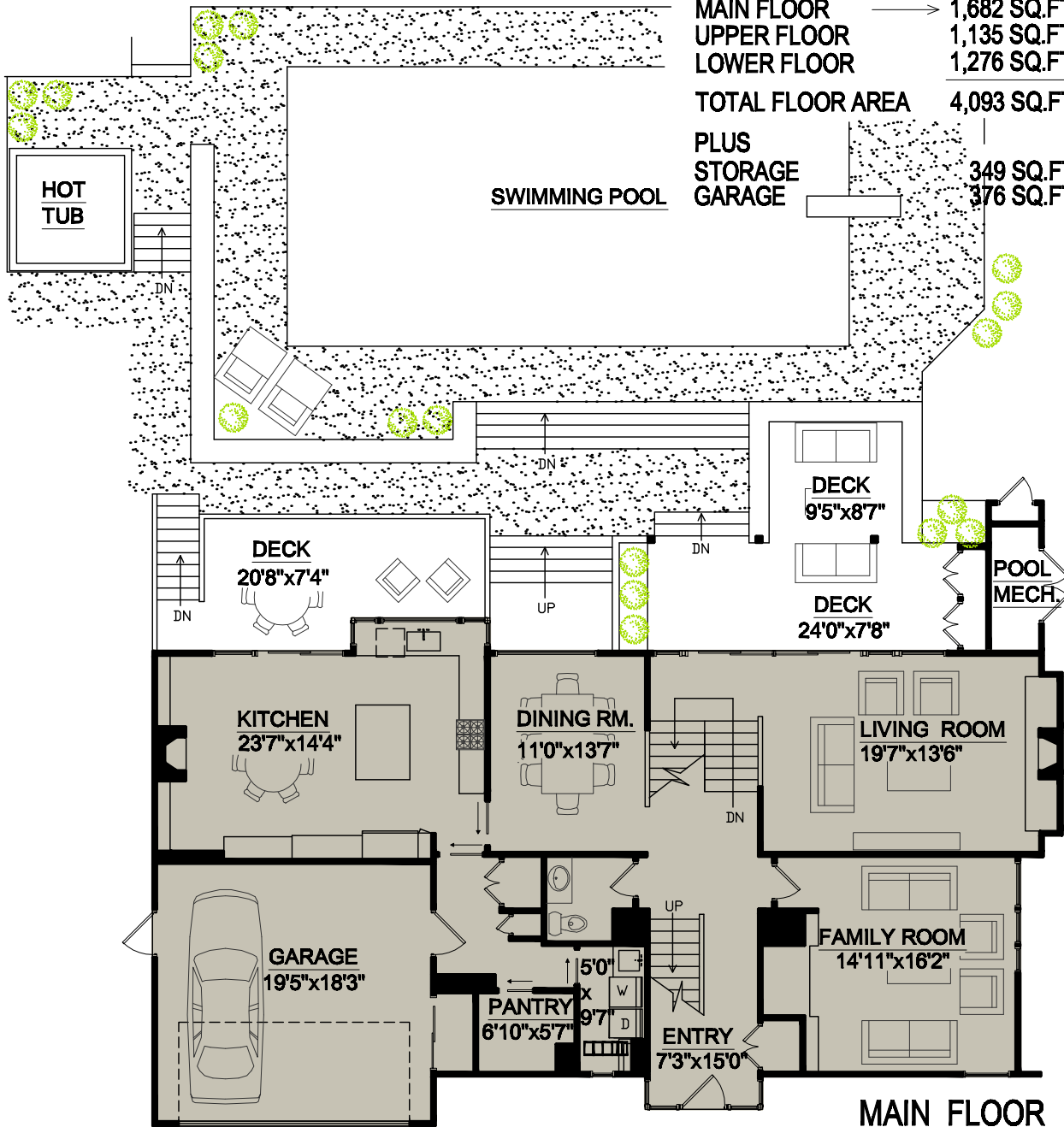
2370 QUEENS AVENUE

West Vancouver, BC

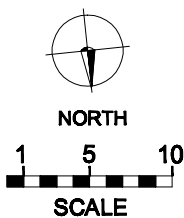
MAIN FLOOR → 1,682 SQ.FT.
 UPPER FLOOR 1,135 SQ.FT.
 LOWER FLOOR 1,276 SQ.FT.

TOTAL FLOOR AREA 4,093 SQ.FT.

PLUS
 STORAGE 349 SQ.FT.
 GARAGE 376 SQ.FT.



MAIN FLOOR



RAY AND LYND A P R O C

www.proc.ca