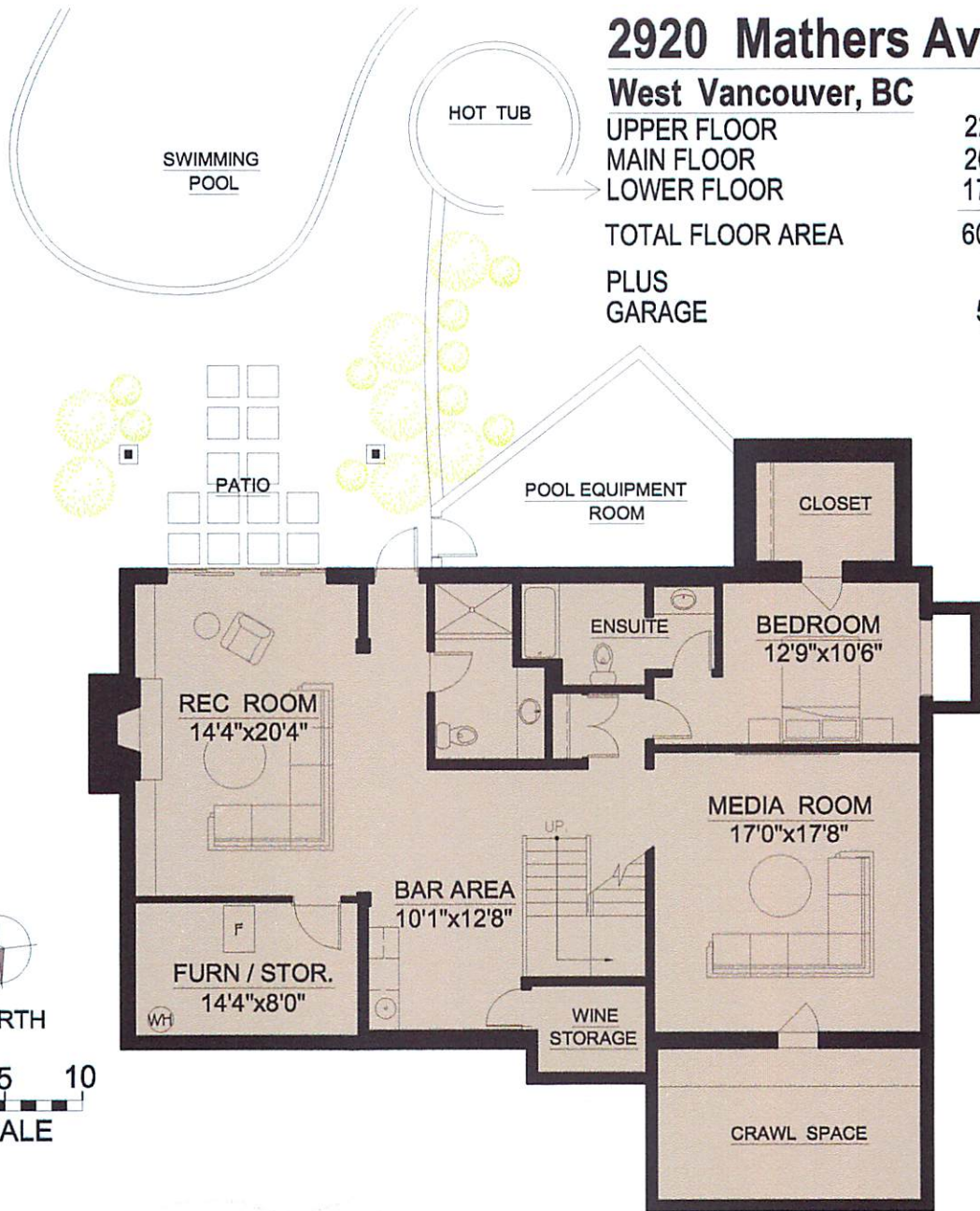


2920 Mathers Avenue

West Vancouver, BC

| | |
|-------------------------|--------------------|
| UPPER FLOOR | 2248 SQ.FT. |
| MAIN FLOOR | 2055 SQ.FT. |
| LOWER FLOOR | 1789 SQ.FT. |
| TOTAL FLOOR AREA | 6092 SQ.FT. |
| PLUS GARAGE | 520 SQ.FT. |



LOWER FLOOR

RAY AND LYNDA PROG

www.prog.ca



www.realestatefloorplansolutions.com
 ~ Room Dimensions are approximate ~
 ~ Measurements to be verified by Buyer ~