

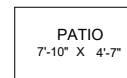
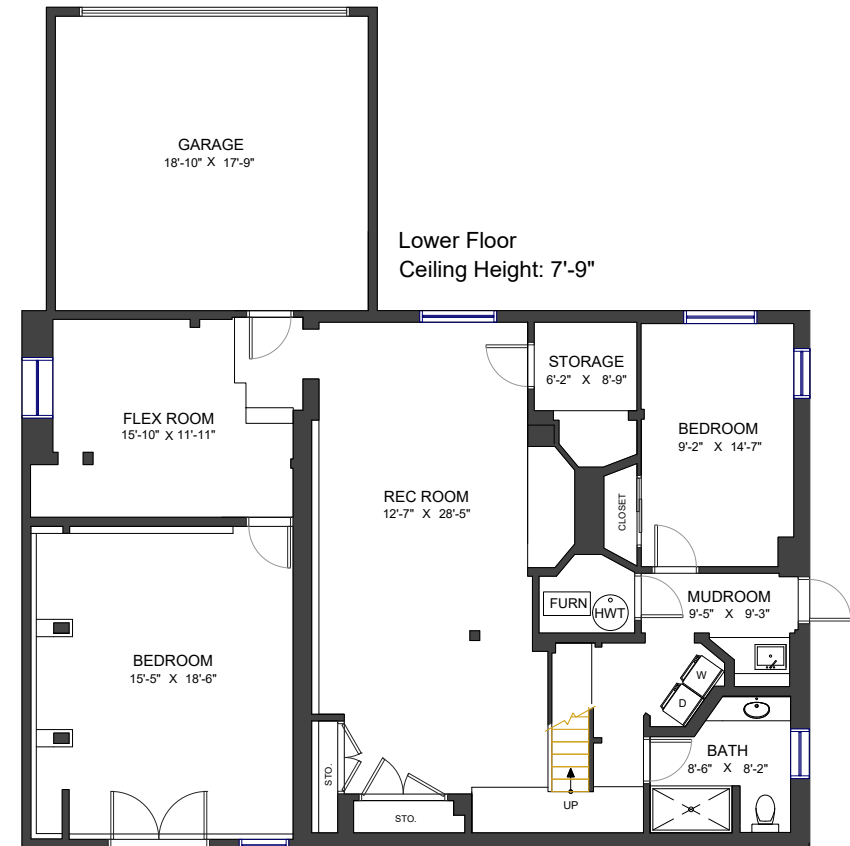
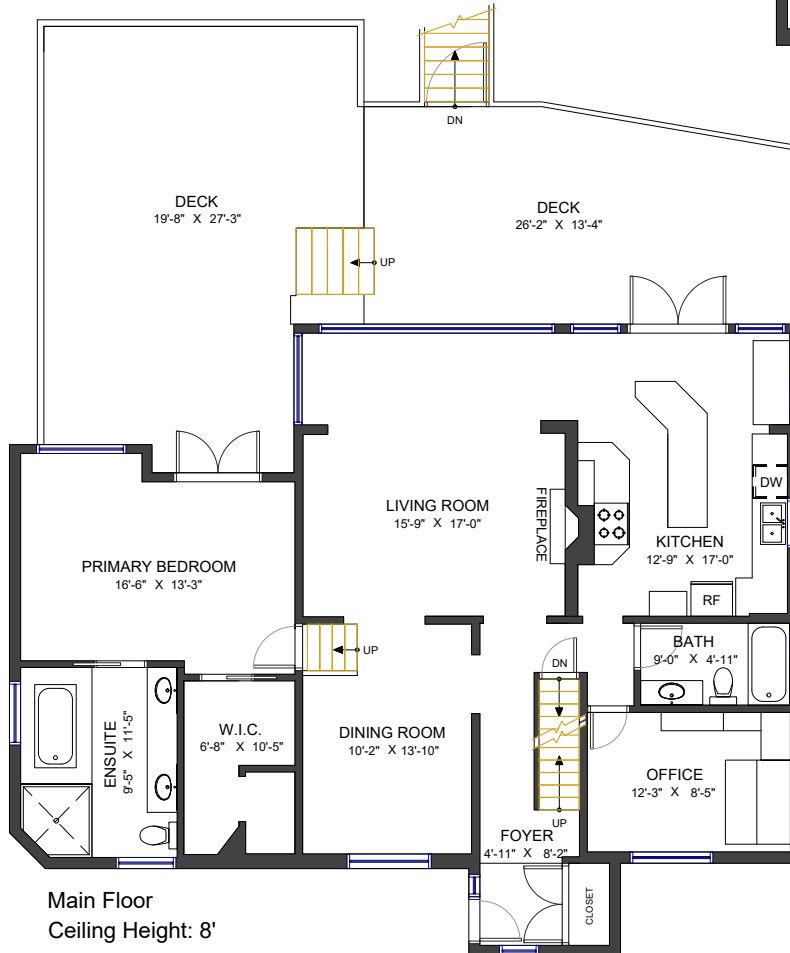
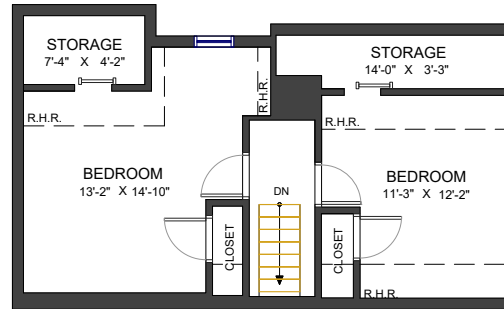
# 2308 Inglewood Avenue West Vancouver, BC



**Lynda & Ray Proc**

604 649 3456 | info@proc.ca | proc.ca

<b>TOTAL AREA</b>	<b>3,516 SF</b>	<b>AUXILIARY AREA</b>	<b>1,217 SF</b>
MAIN FLOOR	1,445 SF	PATIO	36 SF
TOP FLOOR	529 SF	DECK	818 SF
LOWER FLOOR	1,542 SF	GARAGE	363 SF



Valid Until: April 26, 2027



All dimensions are approximate and not suitable for architectural/construction use.  
This is for marketing purposes only. The measurements are approximate within +/- 2%, E&O insured.  
Total square footage might be kept consistent with strata plan. It might include unfinished area.  
We have no guarantee or warranty of the degree of room titles. Area is calculated per ANSI Z765-2003 method.  
Total area includes portions with non-compliant ceiling height in the sqft calculation.