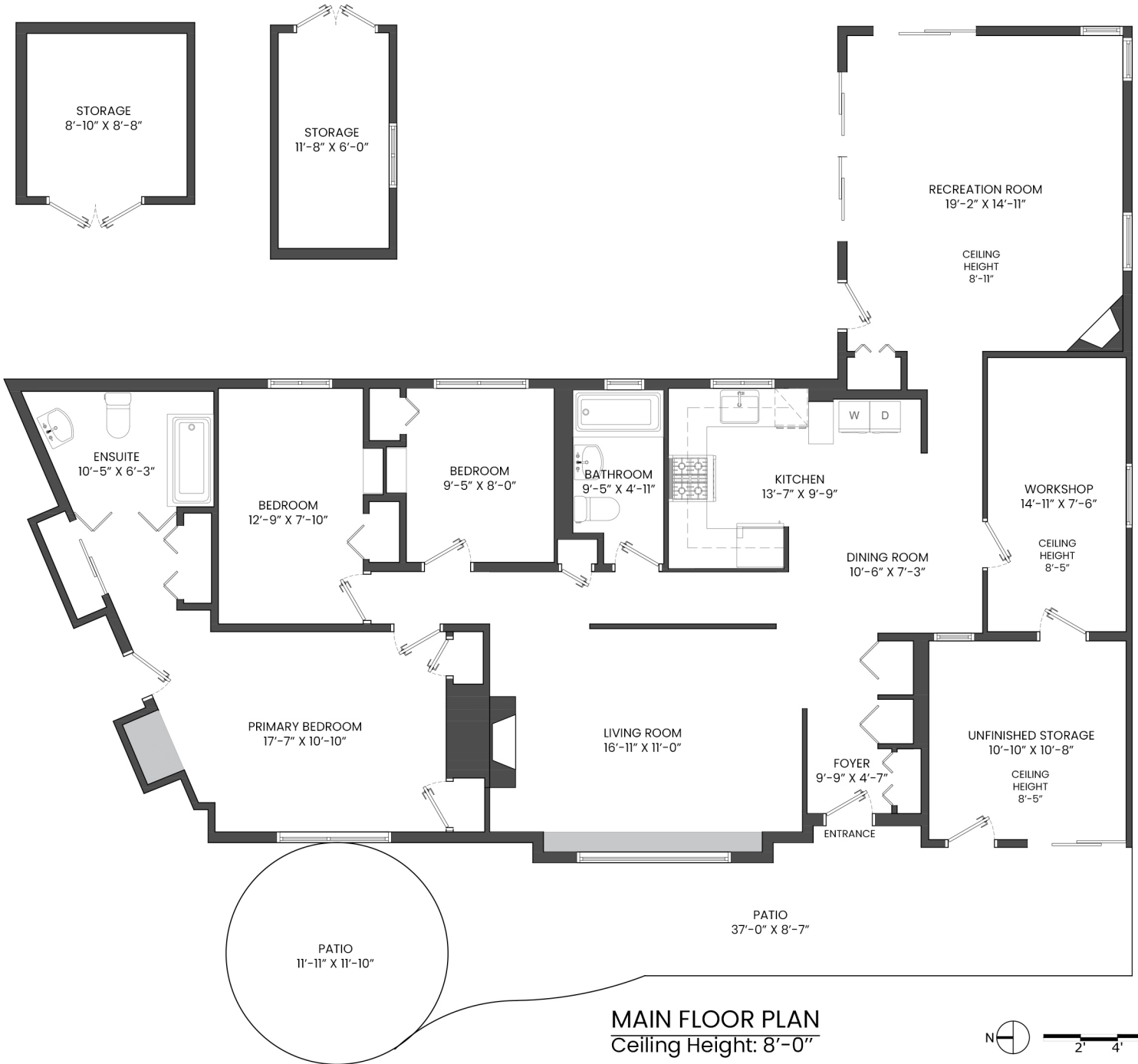
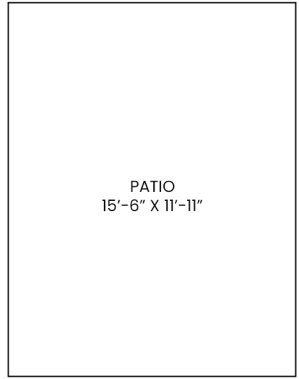
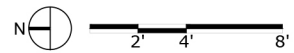


1222 ROSEWOOD CRESCENT, NORTH VANCOUVER, BC

MAIN FLOOR TOTAL: 1,471 SQ.FT. **OUTSIDE STORAGE TOTAL:** 182 SQ.FT.
UNFINISHED WORKSHOP: 125 SQ.FT. **PATIO TOTAL :** 578 SQ.FT.
UNFINISHED STORAGE: 125 SQ.FT.
GRAND TOTAL: 1,721 SQ.FT.



MAIN FLOOR PLAN
Ceiling Height: 8'-0"



John Jennings
 604-790-1900
 John@JohnJennings.com
 JohnJennings.com

THE FLOOR PLAN ILLUSTRATION IS NOT SUITABLE FOR CONSTRUCTION/ ARCHITECTURAL PURPOSES. MEASUREMENTS ARE APPROXIMATE AND MAY NOT BE TO SCALE. E&O INSURED. FLOOR PLAN DESIGNED BY ISHOT.CA ENTERPRISES INC. 604-368-7979 ISHOT.CA

