

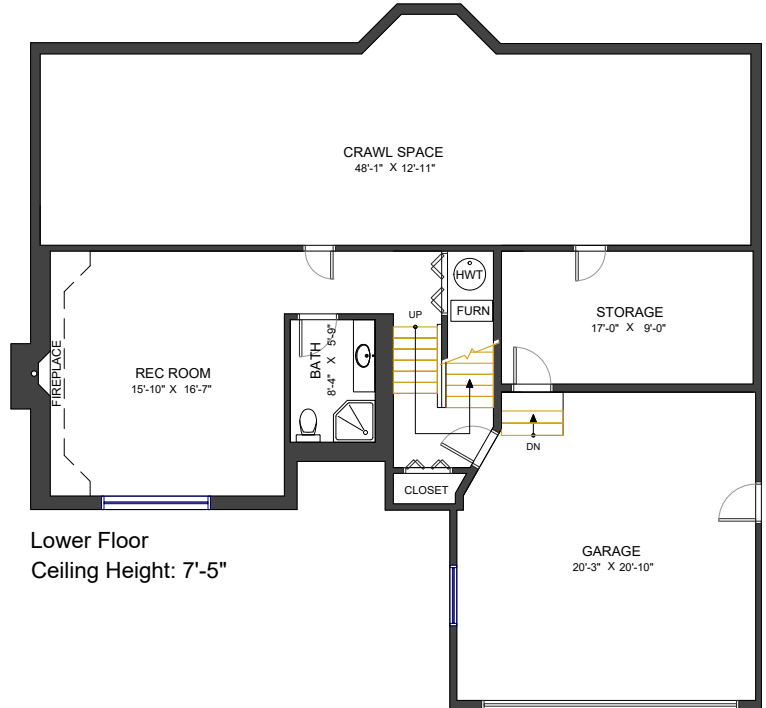
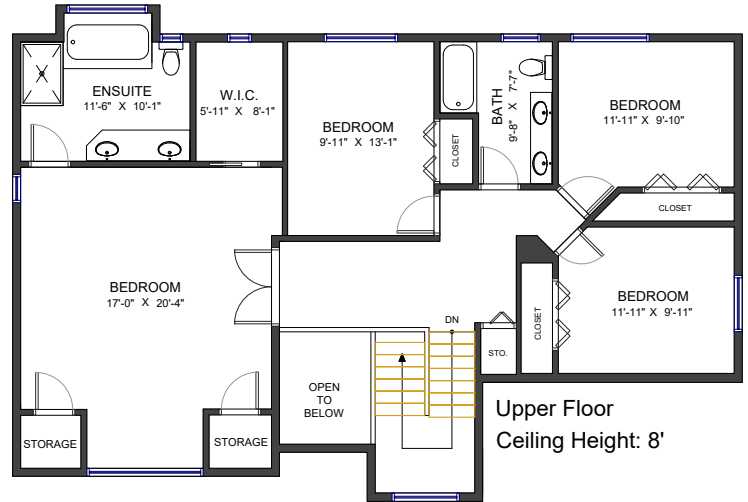
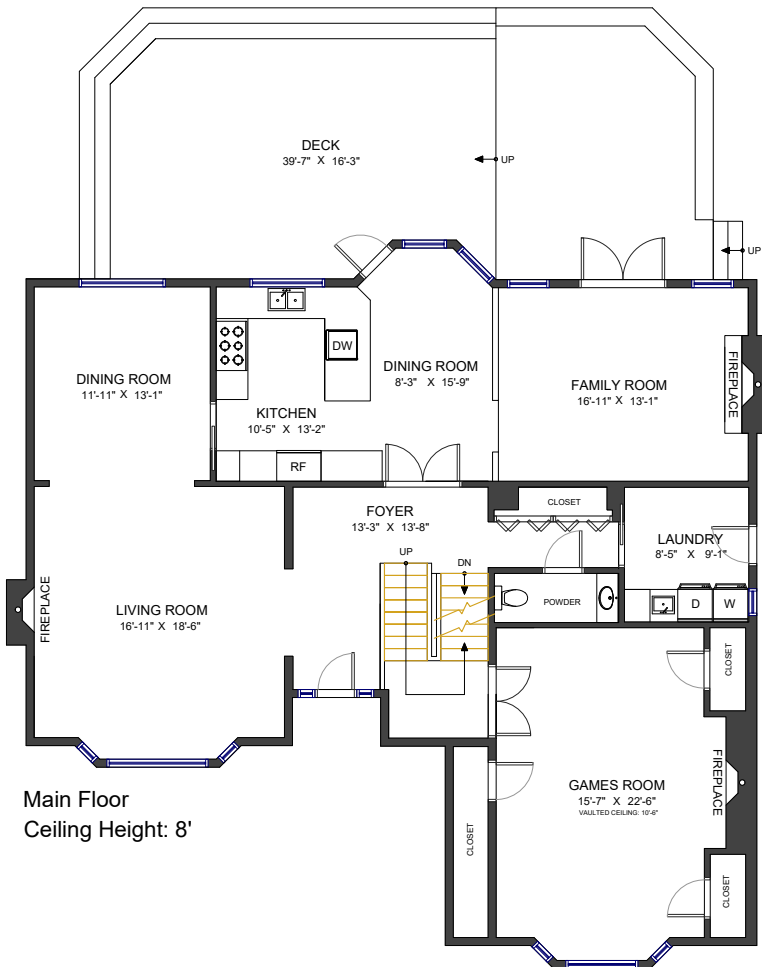
2323 Inglewood Avenue West Vancouver, BC



Lynda & Ray Proc
604 649 3456 | info@proc.ca | proc.ca

LIVING AREA	3,747 SF
MAIN FLOOR	1,872 SF
UPPER FLOOR	1,333 SF
LOWER FLOOR	542 SF

AUXILIARY AREA	2,054 SF
DECK	752 SF
GARAGE	433 SF
STORAGE	174 SF
CRAWL SPACE	695 SF



Valid Until: January 29, 2027



All dimensions are approximate and not suitable for architectural/construction use.
This is for marketing purposes only. The measurements are approximate within +/- 2%, E&O insured.
Total square footage might be kept consistent with strata plan. It might include unfinished area.
We have no guarantee or warranty of the degree of room titles. Area is calculated per ANSI Z765-2003 method.

