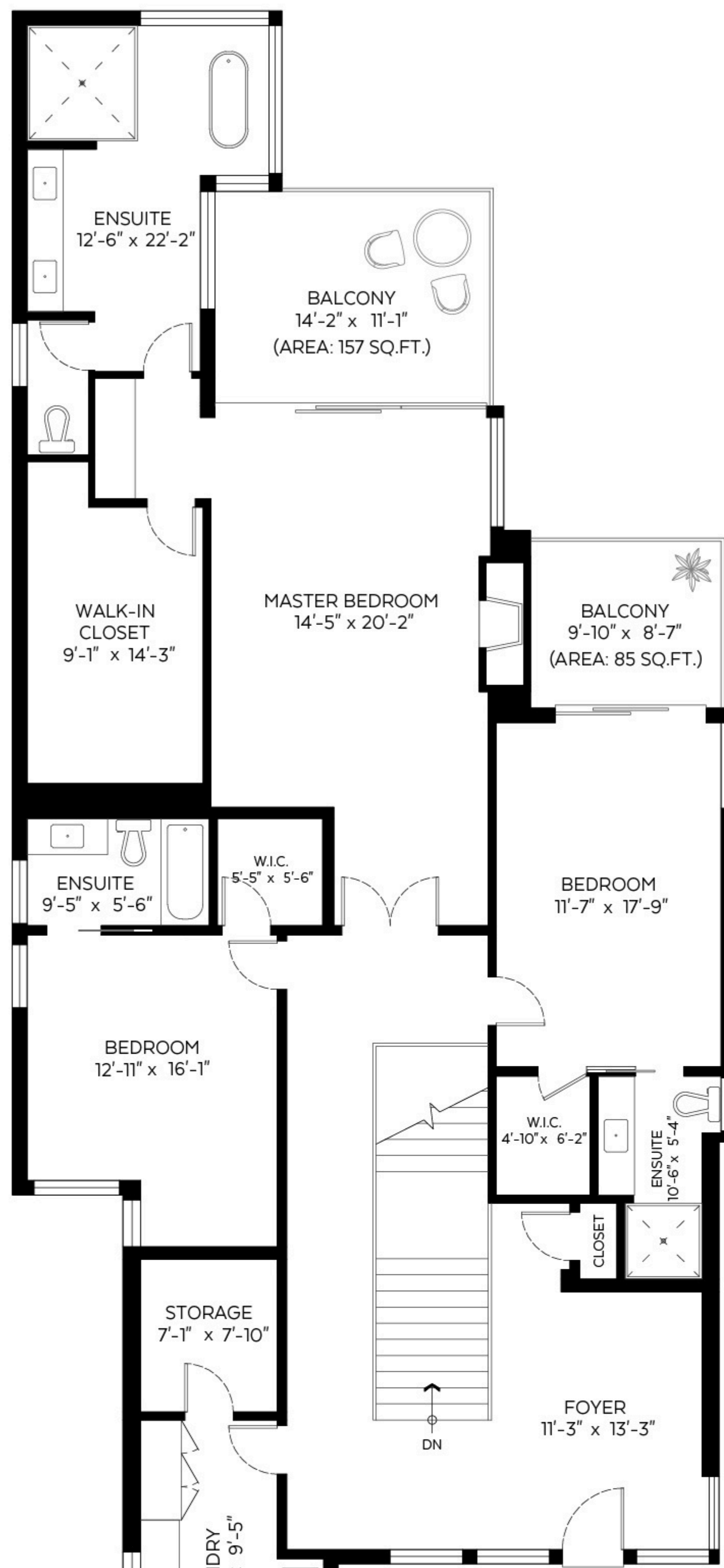


3906 Marine Drive,
West Vancouver, B.C.

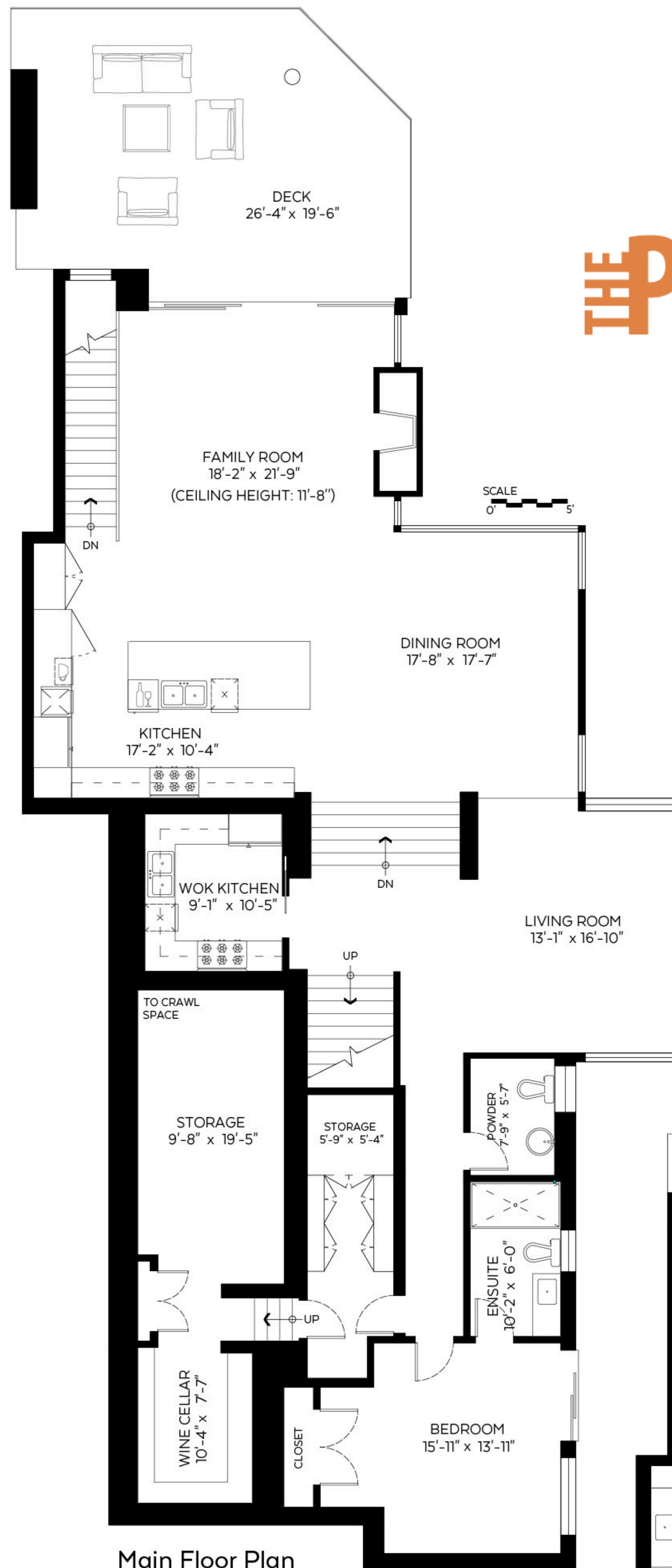
Main Floor:	2,665 sq.ft.
Upper Floor:	2,271 sq.ft.
Lower Floor:	666 sq.ft.
Total:	5,602 sq.ft.

Auxiliary Area

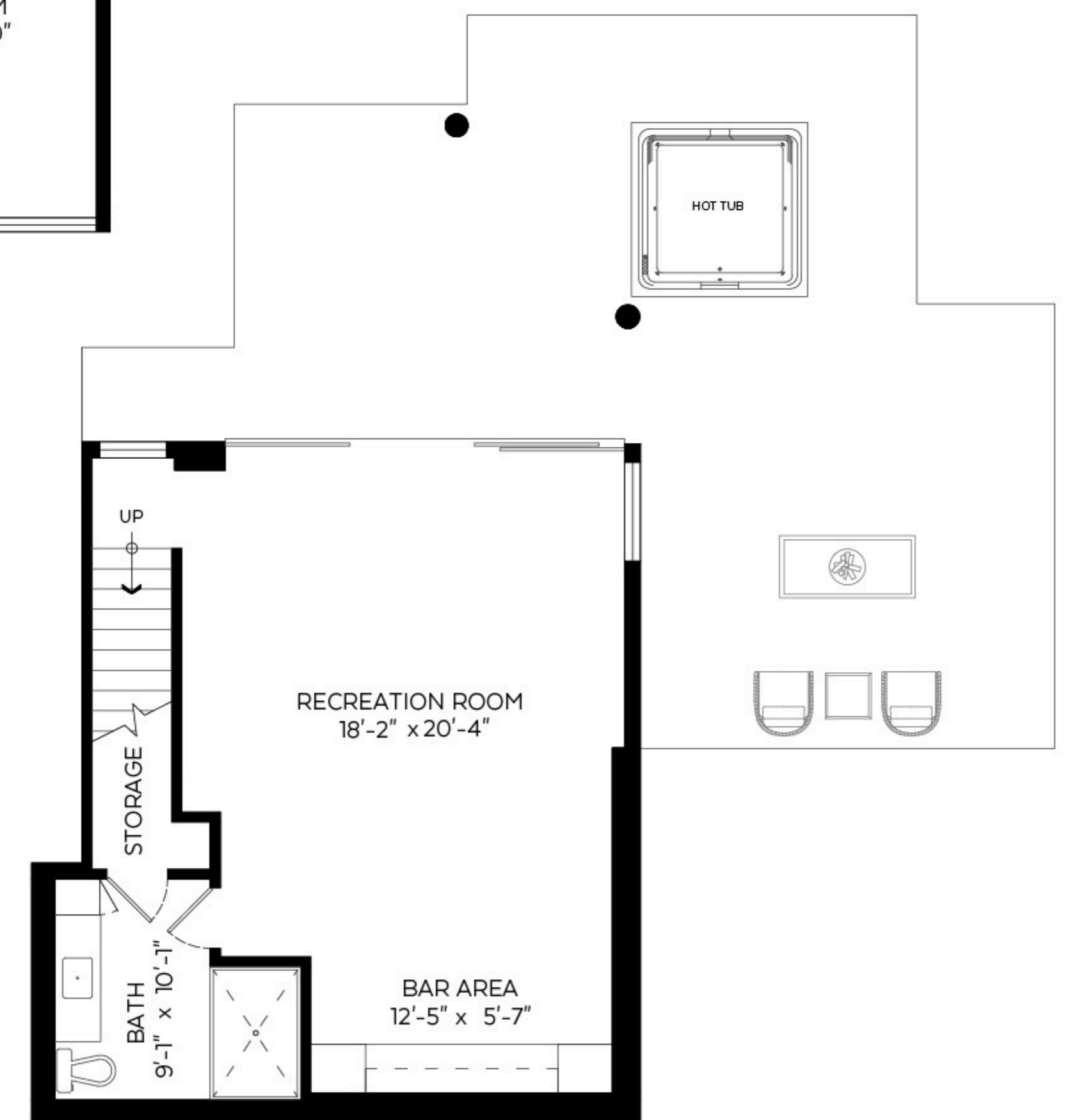
Garage:	534 sq.ft.
Patio:	730 sq.ft.
Deck:	447 sq.ft.
Balconies:	242 sq.ft.



Upper Floor Plan
Floor Area: 2,271 sq.ft.
Ceiling Height: 8.75 ft.



Main Floor Plan
Floor Area: 2,665 sq.ft.
Ceiling Height: 9 ft.



Lower Floor Plan
Floor Area: 666 sq.ft.
Ceiling Height: 8 ft.



Valid Until: October 11, 2022

The floor plan is not suitable for architectural/construction and is covered under E&O. © Excelsior Measuring Inc. 2021. All rights reserved for Excelsior Measuring Inc. Users shall not publish and distribute such material (in whole or in part) and/or incorporate it in other works in any form.

